

# SILVERSTONE

Dry - Pressed Ceramic Tiles ISO 13006 : 2012 Annex G - UNI EN 14411 : 2012 Annex G - Bla GL



CARATTERISTICHE TECNICHE Technical Features - Caracteristiques Techniques Technische Eigenschaften - Caracteristicas Tecnicas - Технические Характеристики	NORMA Standard - Norme Norm - Norma - Норма	VALORI Value - Valeur Vorgabe - Valor - Средние
	UNI EN ISO 10545/2	± 0,26% / ± 1,5mm
<b>PLANARITÀ</b> Flatness - Planéité - Ebenflächigkeit - Planiyud - Плоскостность	ASTM C485 Warpage Calibrated ± 0,75% (max ± 0,09 in) Rectified ± 0,40% (max ± 0,05 in-size ≤ 60cm) (max ± 0,07 in-size > 60cm)	- ± 0,25% (max ± 0,05 in-size ≤ 60cm) (max ± 0,07 in-size > 60cm)
<b>ASSORBIMENTO D'ACQUA - Valore medio in %</b> Water absorption - Average value expressed in % Absorption d'eau - Valeur moyenne en % Wasseraufnahme - Durchschnittswert in % Absorción de agua - Valor medio en % - Поглощение воды	UNI EN ISO 10545/3 ≤ 0,5 % ASTM C373	Conforme Compliant
<b>RESISTENZA ALLA FLESSIONE</b> Modulus of rupture - Resistance a la flexion Biegefestigkeit - Resistencia a la flexion - Прочность на изгиб	UNI EN ISO 10545/4	≥ 50 N/mm²
<b>FORZA DI ROTTURA</b> Breaking strength - Résistance à la rupture Bruchlast - Resistencia a la rotura - Разрывное усилие	UNI EN ISO 10545/4 ASTM C648	≥ 2000 N 700 LBS
<b>RESISTENZA AL GELO</b> Frost resistance - Résistance au gel - Frostbeständigkeit Resistencia a las heladas - Морозостойкость	UNI EN ISO 10545/12 ASTM C1026	Conforme Unaffected
<b>RESISTENZA CHIMICA ad alte e basse concentrazioni di acidi e basi</b> Chemical resistance to high and low acid and basic concentrations Résistance chimique aux hautes et basses concentrations d'acides et de bases Chemikalienfestigkeit bei hohen und niedrigen Konzentrationen von Säuren und Basen Resistencia química con concentraciones altas y bajas de ácidos y bases Химическая стойкость к высоким и низким концентрациям кислот и щелочей	UNI EN ISO 10545/13 ASTM C-650	GA - GLA - GHA Unaffected
<b>RESISTENZA ALLE MACCHIE</b> Stain resistance - Résistance aux taches - Fleckenbeständigkeit Resistencia a las manchas - Стойкость к образованию пятен	UNI EN ISO 10545/14 CTI 81-7D	5 No Evident Variation
<b>COEFFICIENTE DI ATTRITO</b> Slip resistance - Coefficient de glissement - Rutschfestigkeit Barfußbereich Coeficiente de atrito medio - Коэффициент трения	DIN 51130 DIN 51097 ANSI A 137.1-2012 DCOF (Section 9.6) B.C.R.A.	NATURALE R10 A Dry: 0,71* Wet: 0,64* ≥ 0,40 LAPPATO R9 - Dry: 0,73* Wet: 0,46* -

\* Values obtained with certificate n° 20120007. Date 03/23/2013.

Per maggiori chiarimenti sui dati tecnici e sulla garanzia consultare il catalogo generale in vigore. - For further information on technical specifications, please consult our up-dated general catalogue. - Pour toutes informations supplémentaires sur les données techniques et sur les garanties, veuillez consulter le catalogue général en vigueur. - Für weitere Informationen über technische Daten und Garantie beziehen sie sich bitte auf den aktuellen Gesamtkatalog. - Para posteriores informaciones sobre los datos técnicos y la garantía, vease el catalogo general en vigor. - Более подробную информацию о технических данных и гарантии смотрите в действующем сводном катал.

Articolo Item Reference Artikel Artículo Артикула	Formato (cm) Size (cm) Format (cm) Format (cm) Tamaño (cm) Формат (cm)	Spessore (mm) Thickness (mm) Epaisseur (mm) Stärke (mm) Espesor (mm) Толщина (mm)	Pz. x Mq. Pieces x Sqm Pcs / M² Stk. x Qm Pzs x Mc. Шт. x кв.м.	Pz. x Scat. Pieces x Box Pcs / Bte Stk. x Krt. Pzs x Caja Шт. x Кор.	Mq. x Scat. Sqm x Box M² / Bte Qm x Krt. Mc. x Caja Кв.м. x Кор.	Peso x Scat. (Kg) Weight x Box (Kg) Poids / Bte (Kg) Krt. x Pal. Gewicht x Pal. (Kg) Peso x Caja (Kg) Вес x Кор. (Kg)	Scat. x Pal. Boxes x Pal. Bte / Pal. Krt. x Pal. Cajas x Pal. Кор. x Подд.	Mq. x Pal. Sqm x Pal. M² / Pal. Qm x Pal. Mc. x Pal. Кв.м x Подд.	Peso x Pal. (Kg) Weight x Pal. (Kg) Poids / Pal. (Kg) Gewicht x Pal. (Kg) Peso x Pal. (Kg) Вес x Подд. (Kg)
604L1_R/P	60x60	10	2,78	3	1,080	24,70	40	43,20	988
634L_R/P	30x60	10	5,56	6	1,080	24,70	40	43,20	988
454L_	45x45	9	4,94	6	1,215	27,00	33	40,10	891
M634L_	30x60	10	5,56	4	0,720	16,00	30	21,60	480
I304L_	30x30	10	11,11	5	0,450	10,30	60	27,00	618

Emilceramica S.p.A.



EMIL  
CERAMICA

EMILCERAMICA S.p.A.  
Via Ghiarola Nuova 29  
41042 Fiorano Modenese (Mo) - Italia  
Tel. 0536 835111  
Fax Italia: +39 0536 835958  
Fax Export: +39 0536 835490  
info@emilceramicagroup.it  
www.emilceramica.it

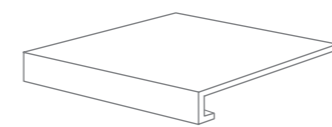
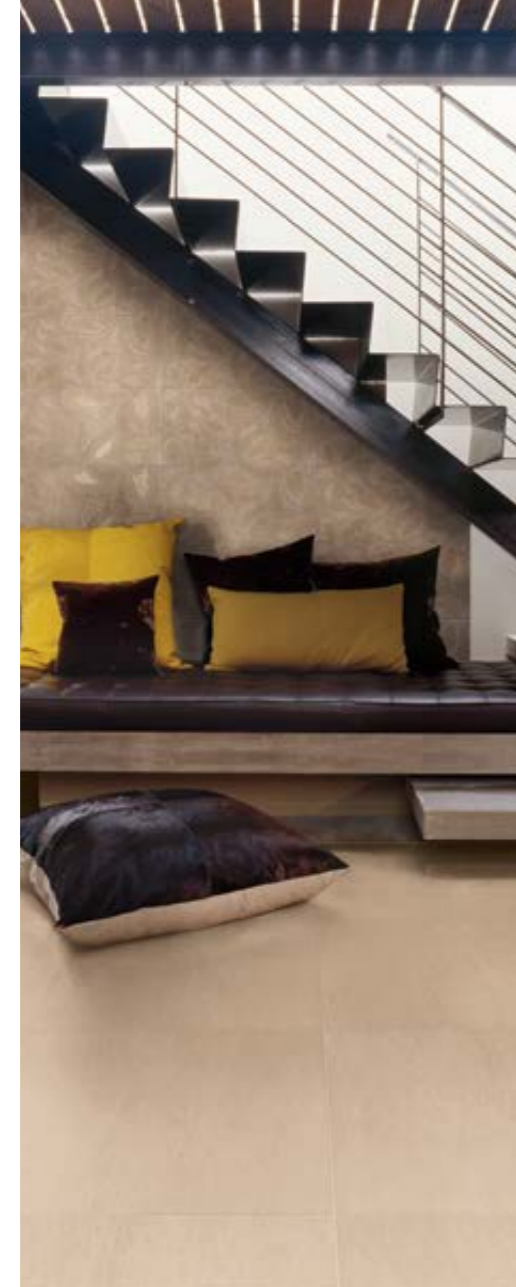
1034774 Rev. 0 - Giugno 2014

SILVERSTONE

EMIL  
CERAMICA

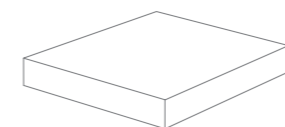






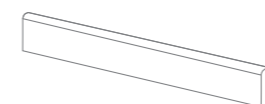
**GRADONE - STEP**  
 30x30x3,2x3,2 - 11<sup>13/16</sup>"x11<sup>13/16</sup>"x1<sup>1/4</sup>"x1<sup>1/4</sup>"  
 Pcs. Box. 6 - ML x Box 1,80

- 7C4L1R** Bianco Nat. Rett. ● 60
- 7C4L3R** Beige Nat. Rett. ● 60
- 7C4L6R** Marrone Nat. Rett. ● 60
- 7C4L8R** Grigio Nat. Rett. ● 60
- 7C4L9R** Antracite Nat. Rett. ● 60



**ANGOLARE DX/SX**  
**CORNER TILE DX/SX**  
 30x30x3,2x3,2 - 11<sup>13/16</sup>"x11<sup>13/16</sup>"x1<sup>1/4</sup>"x1<sup>1/4</sup>"  
 Pcs. Box. 2 - ML x Box 0,60

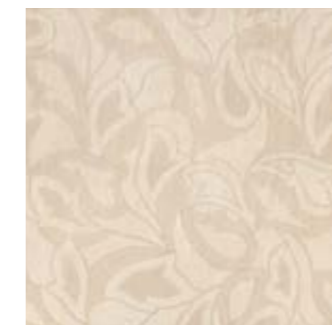
- 2A4L1RD/S** Bianco Nat. Rett. ● 781
- 2A4L3RD/S** Beige Nat. Rett. ● 781
- 2A4L6RD/S** Marrone Nat. Rett. ● 781
- 2A4L8RD/S** Grigio Nat. Rett. ● 781
- 2A4L9RD/S** Antracite Nat. Rett. ● 781



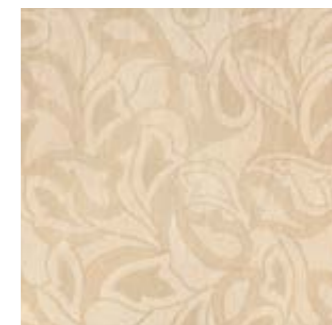
**BATTISCOPIA - SKIRTING**  
 7,5x60 - 2<sup>15/16</sup>"x23<sup>5/8</sup>"  
 Pcs. Box. 15 - ML x Box 9

- 874L1R** Bianco Nat. Rett. ● 13
- 874L3R** Beige Nat. Rett. ● 13
- 874L6R** Marrone Nat. Rett. ● 13
- 874L8R** Grigio Nat. Rett. ● 13
- 874L9R** Antracite Nat. Rett. ● 13

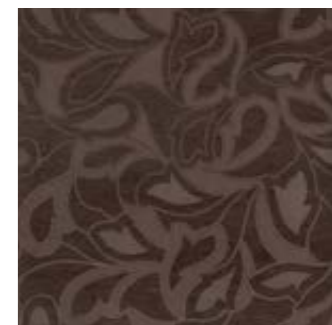
**ATMOSPHERE**



60x60 - 23<sup>5/8</sup>"x23<sup>5/8</sup>"  
**604L1RC** Bianco Nat. Rett. ● 95  
 Pcs. Box. 2



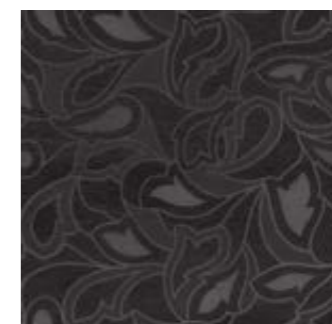
60x60 - 23<sup>5/8</sup>"x23<sup>5/8</sup>"  
**604L3RC** Beige Nat. Rett. ● 95  
 Pcs. Box. 2



60x60 - 23<sup>5/8</sup>"x23<sup>5/8</sup>"  
**604L6RC** Marrone Nat. Rett. ● 95  
 Pcs. Box. 2



60x60 - 23<sup>5/8</sup>"x23<sup>5/8</sup>"  
**604L8RC** Grigio Nat. Rett. ● 95  
 Pcs. Box. 2



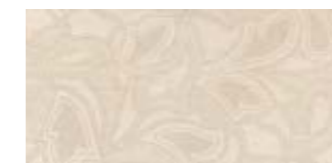
60x60 - 23<sup>5/8</sup>"x23<sup>5/8</sup>"  
**604L9RC** Antracite Nat. Rett. ● 95  
 Pcs. Box. 2

**BACCHETTA**

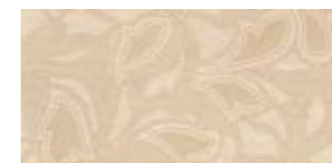
1x60 - 3<sup>3/8</sup>"x23<sup>5/8</sup>"  
**L9830** Alluminio Lucido ● 57  
 Pcs. Box. 2

1x60 - 3<sup>3/8</sup>"x23<sup>5/8</sup>"  
**L9831** Alluminio Satinato ● 57  
 Pcs. Box. 2

**ATMOSPHERE**



30x60 - 11<sup>13/16</sup>"x23<sup>5/8</sup>"  
**634L1PC** Bianco Lapp. Rett. ● 85  
 Pcs. Box. 2



30x60 - 11<sup>13/16</sup>"x23<sup>5/8</sup>"  
**634L3PC** Beige Lapp. Rett. ● 85  
 Pcs. Box. 2



30x60 - 11<sup>13/16</sup>"x23<sup>5/8</sup>"  
**634L6PC** Marrone Lapp. Rett. ● 85  
 Pcs. Box. 2



30x60 - 11<sup>13/16</sup>"x23<sup>5/8</sup>"  
**634L8PC** Grigio Lapp. Rett. ● 85  
 Pcs. Box. 2



30x60 - 11<sup>13/16</sup>"x23<sup>5/8</sup>"  
**634L9PC** Antracite Lapp. Rett. ● 85  
 Pcs. Box. 2

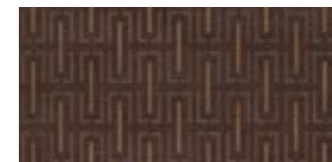
**EMOTION**



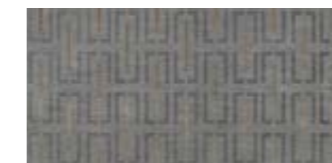
30x60 - 11<sup>13/16</sup>"x23<sup>5/8</sup>"  
**634L1PN** Bianco Lapp. Rett. ● 85  
 Pcs. Box. 2



30x60 - 11<sup>13/16</sup>"x23<sup>5/8</sup>"  
**634L3PN** Beige Lapp. Rett. ● 85  
 Pcs. Box. 2



30x60 - 11<sup>13/16</sup>"x23<sup>5/8</sup>"  
**634L6PN** Marrone Lapp. Rett. ● 85  
 Pcs. Box. 2



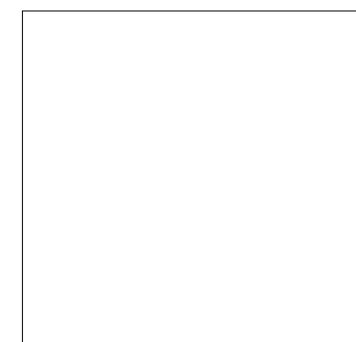
30x60 - 11<sup>13/16</sup>"x23<sup>5/8</sup>"  
**634L8PN** Grigio Lapp. Rett. ● 85  
 Pcs. Box. 2



30x60 - 11<sup>13/16</sup>"x23<sup>5/8</sup>"  
**634L9PN** Antracite Lapp. Rett. ● 85  
 Pcs. Box. 2

**COLORI/FORMATI**

COLOURS / SIZES - COULEURS / FORMATS - FARBEN / FORMATE - COLORES / TAMAÑOS - ЦВЕТА / ФОРМАТЫ



60x60 - 23<sup>5/8</sup>"x23<sup>5/8</sup>"  
**604L1R** Bianco Naturale Rett. ● 662  
**604L3R** Beige Naturale Rett. ● 662  
**604L1R** Marrone Naturale Rett. ● 662  
**604L1R** Grigio Naturale Rett. ● 662  
**604L1R** Antracite Naturale Rett. ● 662



30x60 - 11<sup>13/16</sup>"x23<sup>5/8</sup>"  
**634L1R** Bianco Naturale Rett. ● 61  
**634L3R** Beige Naturale Rett. ● 61  
**634L1R** Marrone Naturale Rett. ● 61  
**634L1R** Grigio Naturale Rett. ● 61  
**634L1R** Antracite Naturale Rett. ● 61



45x45 - 17<sup>11/16</sup>"x17<sup>11/16</sup>"  
**454L3** Beige Naturale ● 54  
**454L1** Marrone Naturale Rett. ● 54  
**454L1** Grigio Naturale Rett. ● 54

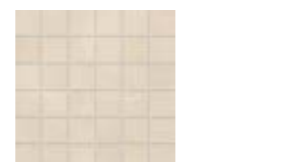
**604L1P** Bianco Lappato Rett. ● 77  
**604L3P** Beige Lappato Rett. ● 77  
**604L1P** Marrone Lappato Rett. ● 77  
**604L1P** Grigio Lappato Rett. ● 77  
**604L1P** Antracite Lappato Rett. ● 77

**634L1P** Bianco Lappato Rett. ● 73  
**634L3P** Beige Lappato Rett. ● 73  
**634L1P** Marrone Lappato Rett. ● 73  
**634L1P** Grigio Lappato Rett. ● 73  
**634L1P** Antracite Lappato Rett. ● 73

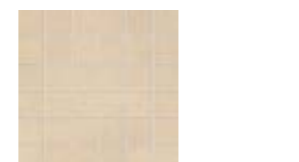
Si consiglia la posa con fuga 2 mm. - Laying with a 2 mm-joint is recommended. - Pose recommandée avec joints de 2 mm.  
 Es wird eine Fugenbreite von 2 mm empfohlen. - Se recomienda la colocación con juntas de 2 mm. - Рекомендується укладка с швом 2 мм.

**MOSAICO TOZZ. MIX NAT./LAPP.\***

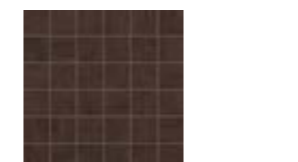
Tessera - Chip 4,8x4,8 - 1<sup>7/8</sup>"x 1<sup>7/8</sup>"



30x30 - 11<sup>13/16</sup>"x11<sup>13/16</sup>"  
**I304L1** Bianco Rett. ● 98



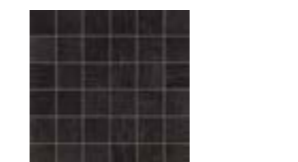
30x30 - 11<sup>13/16</sup>"x11<sup>13/16</sup>"  
**I304L3** Beige Rett. ● 98



30x30 - 11<sup>13/16</sup>"x11<sup>13/16</sup>"  
**I304L6** Marrone Rett. ● 98



30x30 - 11<sup>13/16</sup>"x11<sup>13/16</sup>"  
**I304L8** Grigio Rett. ● 98



30x30 - 11<sup>13/16</sup>"x11<sup>13/16</sup>"  
**I304L9** Antracite Rett. ● 98

**LISTELLI SFALSATI MIX NAT./LAPP.\***



30x60 - 11<sup>13/16</sup>"x23<sup>5/8</sup>"  
**M634L1** Bianco Rett. ● 95



30x60 - 11<sup>13/16</sup>"x23<sup>5/8</sup>"  
**M634L3** Beige Rett. ● 95



30x60 - 11<sup>13/16</sup>"x23<sup>5/8</sup>"  
**M634L6** Marrone Rett. ● 95



30x60 - 11<sup>13/16</sup>"x23<sup>5/8</sup>"  
**M634L8** Grigio Rett. ● 95



30x60 - 11<sup>13/16</sup>"x23<sup>5/8</sup>"  
**M634L9** Antracite Rett. ● 95

\* Su rete in fibra - On fibre mesh backing  
 Sur filet en fibre de verre - Auf Glasfasernetz  
 Sobre malla de fibra - На волоконной сетке