



# I CLASSICI

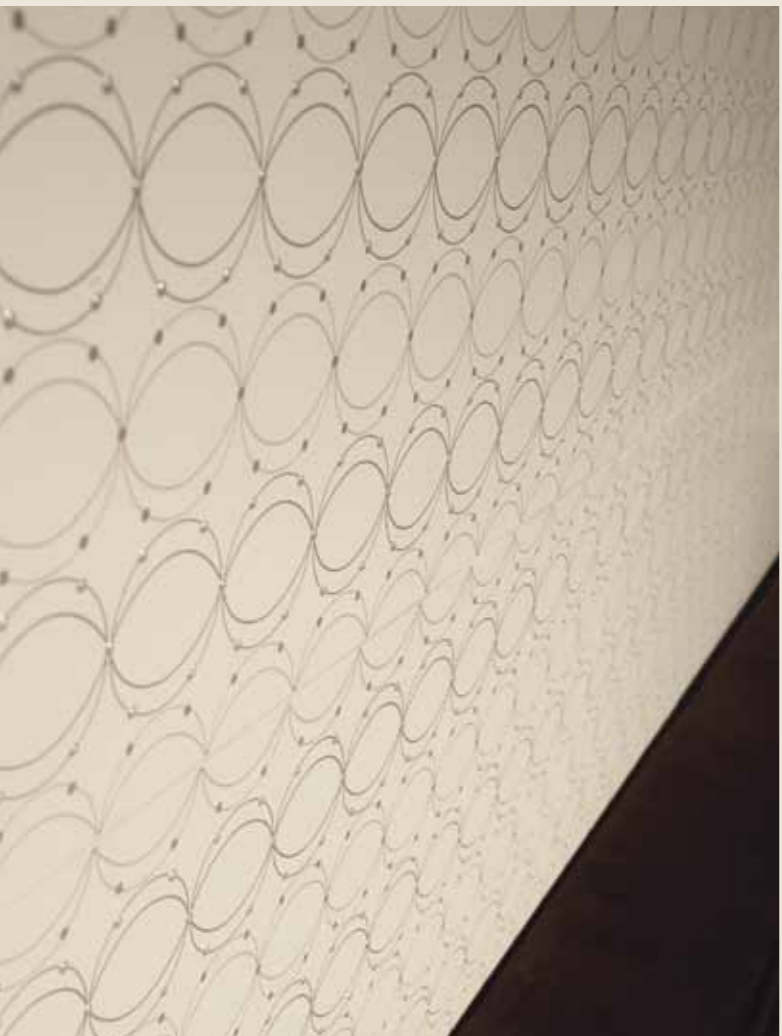
W A R M S H A D O W S

# I CLASSICI



WARM SHADOWS

CEMENTO 30x90 Rett.  
CIRCLE TORTORA 30x90 Rett.



CEMENTO 30X90 Rett.  
ELIPSE BEIGE 30x90 Rett.  
Pav.TAUPE MATT 30x30





TORTORA 30x90 Rett.  
CIRCLE CEMENTO 30X90 Rett.  
Matita CEMENTO 1x30



DANDELION CEMENTO 30x90 Rett.

Pav. CEMENT MATT 30x30



CEMENTO 30x90 Rett.  
DANDELION BEIGE 30x90 Rett.  
Matita CEMENTO 1x30





CEMENTO, TORTORA, GRIGIO 30x90 Rett.

Pav. TAUPE MATT 30x30 Rett.





BEIGE 30x90 Rett.  
Mosaico VF5 CEMENT LUCIDO 30x30  
Mosaico VF5 CEMENT MATT 30x30



Mosaico VF4 TAUPE LUCIDO 30x30  
Mosaico VF4 TAUPE MATT 30x30

---

# METROPOLI

18



METROPOLI NADI 60x60

19



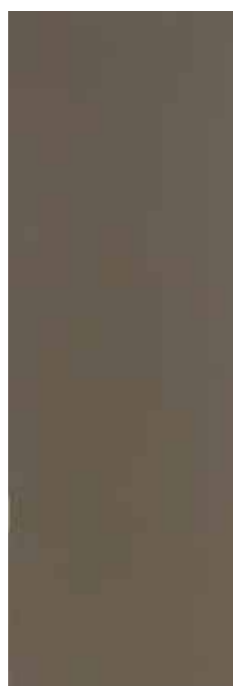
METROPOLI HELSINKI 60x60

# I CLASSICI 30x90 cm

**RIVESTIMENTI IN PASTA BIANCA.** White-body wall tiles. Weißscherbige Wandfliesen. Revêtements en pâte blanche. Настенная плитка из белой глины.



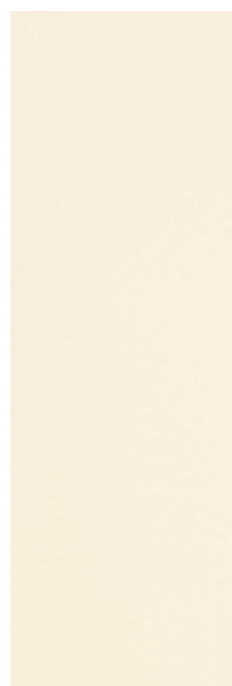
TORTORA  
30x90



CEMENTO  
30x90



GRIGIO  
30x90



BEIGE  
30x90



DANDELION CEMENTO  
30x90



DANDELION BEIGE  
30x90

Matita CEMENTO  
1x30



## DECORI. Decors. Decors. Dekore. Декороб.



CIRCLE TORTORA  
30x90



CIRCLE CEMENTO  
30x90




ELIPSE GRIGIO  
30x90

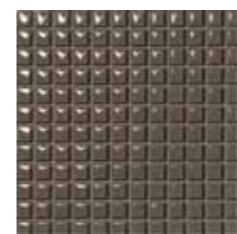


ELIPSE BEIGE  
30x90

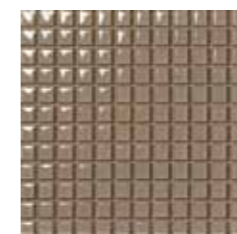
## DECORI. Decors. Decors. Dekore. Декороб. 30x30 cm

**SPESSORE.** Thickness. Stärke. Épaisseur. Толщина.  8 mm

**VETRO.** Glass. Glas. Verre. Стекло.



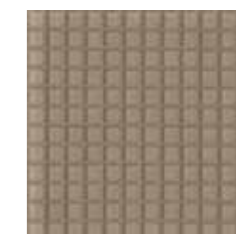
VF5 CEMENT LUCIDO



VF4 TAUPE LUCIDO



VF5 CEMENT MATT



VF4 TAUPE MATT

# METROPOLI

**PAVIMENTI COORDINATI.** Coordinated floors. Sols coordonnés. Koordinierte Bodenbeläge. Рекомендованная напольная плитка.

## METROPOLI 60x60 / 30x30 cm

**SPESSORE.** Thickness. Stärke. Épaisseur. Толщина  $\pm$  10,5mm

**GRES PORCELLANATO SMALTATO.** Glazed porcelain stoneware. Glasiertes Feinsteinzeug. Grès cérame émaillé. Глазурованный керамический гранит.

\* **RETTIFICATO.** Rectified. Geschliffen. Rectifié. Ретифицированная



METROPOLI HELSINKI  
60x60 - 30x30\*



METROPOLI PERTH  
60x60 - 30x30\*



METROPOLI MOMBASA  
60x60 - 30x30\*



METROPOLI NADI  
60x60 - 30x30\*



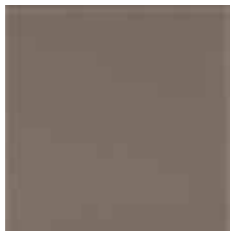
METROPOLI CORDOBA  
60x60 - 30x30\*

**VETRO.** Glass. Glas. Verre. Стекло.

**SPESSORE.** Thickness. Stärke. Épaisseur. Толщина.  $\pm$  8mm



CEMENT MATT  
30x30\*



TAUPE MATT  
30x30\*

	Spessore Thickness Stärke Épaisseur толщина	MQ/SC SQ.M/BOX QM/KT MQ/BTE ШТУК/КОР	KG/SC KG/BOX KG/KT KG/BTE КГ/КОР.	PZ/SC PZ/BOX PZ/KT PZ/BTE PZ/КОР.	SC/PAL BOX/PAL KT/PAL BTE/PAL КОР/ПАЛ.	MQ/PAL SQ.M/PAL QM/PAL MQ/PAL КВ.М/ПАЛ.	KG/PAL KG/PAL KG/PAL KG/PAL КГ/ПАЛ.
30x90	10 mm	0,81	15,35	3	66	53,46	1013
Dec. 30x90	10 mm	-	10,30	2	-	-	-
Matita CEMENTO 1x30	10 mm	-	0,36	6	-	-	-
Crystal C (VF4-VF5) 30x30	8 mm	0,90	14,57	10 fogli	54	48,60	786,80
<b>PAVIMENTI COORDINATI.</b> Coordinated floors. Sols coordonnés. Koordinierte Bodenbeläge. Рекомендованная напольная плитка.							
Pav. Vetro 30x30	8 mm	0,54	11,27	6	72	38,88	811,40
Pav. Metropoli 30x30	10,5 mm	1,08	24,8	12	48	51,84	1190,4
Pav. Metropoli 60x60	10,5 mm	1,44	35	4	24	34,56	840
Battiscopa 9,5x60	10,5 mm	-	11,28	12	-	-	-

Pezzi speciali solo scatole complete - Special pieces only full boxes - Formstücke nur volle Kartons - Pièces spéciales vendu uniquement à la boîte - Специальные элементы Только полные коробки

**RIVESTIMENTI IN PASTA BIANCA.** White-body wall tiles. Weißscherbige Wandfliesen. Revêtements en pâte blanche. Настенная плитка из белой глины.

CARATTERISTICHE TECNICHE TECHNICAL FEATURES	NORME NORMS	VALORE MEDIO AVERAGE VALUE
Massa d'acqua assorbita / Water absorption	ISO 10545 - 3	> 10% Conforme / Complies
Resistenza all'attacco chimico / Chemical resistance	ISO 10545 - 13	Resistente / Resistant GLA
Resistenza alle macchie / Resistance to stains	ISO 10545 - 14	Pulibile / Cleanable

**VETRO.** Glass. Glas. Verre. Стекло.

CARATTERISTICHE TECNICHE TECHNICAL FEATURES	NORME NORMS	VALORE MEDIO AVERAGE VALUE
Resistenza all'abrasione superficiale / Surface abrasion resistance (PEI)	ISO 10545 - 7	V
Resistenza all'attacco chimico / Chemical resistance	ISO 10545 - 13	Resistente / Resistant GLA
Resistenza alle macchie / Resistance to stains	ISO 10545 - 14	Pulibile / Cleanable
Resistenza allo scivolamento / Slip resistance	DIN 51097	Ang. 25° - A + B + C

# METROPOLI

**GRES PORCELLANATO SMALTATO.** Glazed porcelain stoneware. Glasiertes Feinsteinzeug. Grès cérame émaillé. Глазурованный керамический гранит.

CARATTERISTICHE TECNICHE TECHNICAL FEATURES	NORME NORMS	VALORE MEDIO AVERAGE VALUE
Qualità della superficie / Surface quality	ISO 10545 - 2	Conforme a / Complies with EN 14411-G e ISO13006-G
Regolarità dimensionale / Size		
Massa d'acqua assorbita / Water absorption	ISO 10545 - 3	< 0.5% Gruppo Bla
Resistenza a flessione / Modulus of rupture (N/mm <sup>2</sup> )	ISO 10545 - 4	R > 50
Sforzo di rottura / Breaking strength (N)		S > 3000
Resistenza all'urto / Impact resistance	ISO 10545 - 5	> 0.55
Resistenza all'abrasione superficiale / Surface abrasion resistance (PEI)	ISO 10545 - 7	Da IV a V *
Coefficiente di dilatazione termica / Coefficient of linear thermal expansion (MK <sup>-1</sup> )	ISO 10545 - 8	Conforme a / Complies with EN 14411-G e ISO13006-G 6.2 MK <sup>-1</sup>
Resistenza agli sbalzi termici / Resistance to thermal shock	ISO 10545 - 9	Resistente / Resistant
Espansione all'umidità / Moisture expansion (mm/m)	ISO 10545 - 10	≤ 0.1
Resistenza al cavillo / Resistance to crazing	ISO 10545 - 11	Resistente / Resistant
Resistenza al gelo / Frost resistance	ISO 10545 - 12	Resistente / Resistant
Resistenza all'attacco chimico / Chemical resistance	ISO 10545 - 13	Resistente / Resistant GLA
Resistenza alle macchie / Resistance to stains	ISO 10545 - 14	Pulibile / Cleanable

\* Eccetto colori scuri / Except dark colours





CER EDIL s.r.l.  
V.le Moncenisio, 5  
41049 Sassuolo (MO) - Italy  
Tel. +39 0536 996 511  
Fax +39 0536 811 120  
Fax +39 0536 996 565  
[info@cer-edil.com](mailto:info@cer-edil.com)