

PIASE

105

EC8P 94MH2P
Lappata Rett.
45x90 - 17^{11/16}" x 35^{7/16}"

EMIL
CERAMICA

PIASE

COLORI

COLOURS
COULEURS
FARBEN
COLORES
ЦВЕТА



Brick Spazzolata



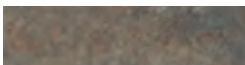
Brick Fiammata



Brick Piano Sega



Brick Burattato



Brick Spacco
Multicolor

FORMATI

SIZES
FORMATS
FORMATE
TAMANOS
ФОРМАТЫ



6x25 - 2^{3/8}"x9^{13/16}"

SUPERFICI

FINISHES
FINITIONS
OBERFLÄCHEN
SUPERFICIES
ОТДЕЛКА

Naturale
(Brick)



R 11 DIN 51130
B (A+B) DIN 51097
≥ 0,40 B.C.R.A.

Wet ≥ 0,42
ANSI A 137.1 - 2012 DCOF - Section 9.6
P3 AS 4586: 2013
Slip resistance classification of new pedestrian
surface materials.

> 36 Low Slip potential
BS 7976-2: 2002 Pendulum testers

2 ENV 12633-2006
Method of determination of unpolished
and polished slip/skid resistance value.



FULL HD DIGITAL
PRINTING
TECHNOLOGY



Min. 7,5%



放射性水平A类

SHADE
VARIATION
V3 High

PIASE

107



E3YU N9MH8R
Piano Segna Grigio Nat. Rett.
90x90 - 35⁷/₁₆" x 35⁷/₁₆"

E3Z0 06MH7
Brick Burattato Nat.
6x25 - 2³/₈" x 9¹³/₁₆"

EMIL
CERAMICA

PIASE

COLORI/FORMATI

COLOURS / SIZES - COULEURS / FORMATS - FARBEN / FORMATE - COLORES / TAMAÑOS - ЦВЕТА / ФОРМАТЫ

Spazzolata

108



60x120 - 23^{5/8}" x 47^{1/4}"

E7VR 98MH2R Indoor Nat. Rett. ● 771



90x90 - 35^{7/16}" x 35^{7/16}"

E3YR N9MH2R Indoor Nat. Rett. ● 80



60x60 - 23^{5/8}" x 23^{5/8}"

E3Z8 60MH2R Indoor Nat. Rett. ● 662

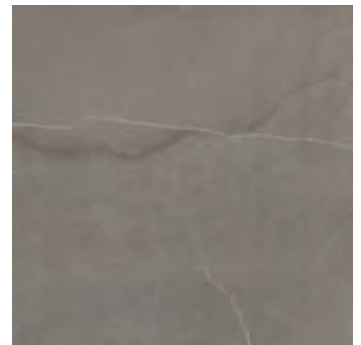
E485 60MH2RZ Outdoor R11 Nat. Rett. ● 662



45x90 - 17^{11/16}" x 35^{7/16}"

E3ZP 94MH2R Indoor Nat. Rett. ● 73

20MM



60x60 - 23^{5/8}" x 23^{5/8}"

EC84 X60MH2R Nat. Rett. ● 83



30x60 - 11^{13/16}" x 23^{5/8}"

E3ZG 63MH2R Indoor Nat. Rett. ● 61

E487 63MH2RZ Outdoor R11 Nat. Rett. ● 61

Si consiglia la posa con fuga 2 mm. - Laying with a 2 mm-joint is recommended. - Pose recommandée avec joints de 2 mm.
Es wird eine Fugenbreite von 2 mm empfohlen. - Se recomienda la colocación con juntas de 2 mm. - Рекомендуется укладка с швом 2 мм.

COLORI/FORMATI

COLOURS / SIZES - COULEURS / FORMATS - FARBEN / FORMATE - COLORES / TAMAÑOS - ЦВЕТА / ФОРМАТЫ

Lappata



60x120 - 23^{5/8}" x 47^{1/4}"

E7WJ 98MH2P Lappata Rett. ● **80**



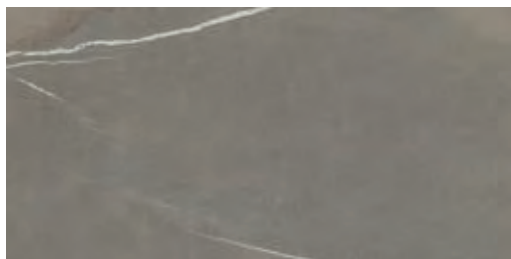
90x90 - 35^{7/16}" x 35^{7/16}"

EC83 N9MH2P Lappata Rett. ● **83**



60x60 - 23^{5/8}" x 23^{5/8}"

E484 60MH2P Lappata Rett. ● **771**



45x90 - 17^{11/16}" x 35^{7/16}"

EC8P 94MH2P Lappata Rett. ● **781**



30x60 - 11^{13/16}" x 23^{5/8}"

E486 63MH2P Lappata Rett. ● **73**

Si consiglia la posa con fuga 2 mm. - Laying with a 2 mm-joint is recommended. - Pose recommandée avec joints de 2 mm.
Es wird eine Fugenbreite von 2 mm empfohlen. - Se recomienda la colocación con juntas de 2 mm. - Рекомендуется укладка с швом 2 мм.

COLORI/FORMATI

COLOURS / SIZES - COULEURS / FORMATS - FARBEN / FORMATE - COLORES / TAMAÑOS - ЦВЕТА / ФОРМАТЫ

Piano Sega Argento

110



60x120 - 23^{5/8}" x 47^{1/4}"

E7VQ 98MH0R Nat. Rett. ● **771**



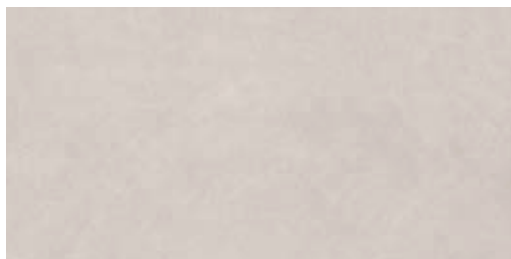
90x90 - 35^{7/16}" x 35^{7/16}"

E3YQ N9MH0R Naturale Rett. ● **80**



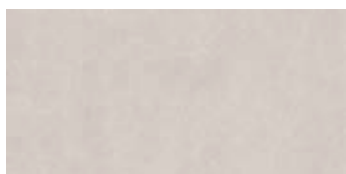
60x60 - 23^{5/8}" x 23^{5/8}"

E3Z7 60MH0R Nat. Rett. ● **662**



45x90 - 17^{11/16}" x 35^{7/16}"

E3ZN 94MH0R Naturale Rett. ● **73**



30x60 - 11^{13/16}" x 23^{5/8}"

E3ZF 63MH0R Nat. Rett. ● **61**

Si consiglia la posa con fuga 2 mm. - Laying with a 2 mm-joint is recommended. - Pose recommandée avec joints de 2 mm.
Es wird eine Fugenbreite von 2 mm empfohlen. - Se recomienda la colocación con juntas de 2 mm. - Рекомендуется укладка с швом 2 мм.

COLORI/FORMATI

COLOURS / SIZES - COULEURS / FORMATS - FARBEN / FORMATE - COLORES / TAMAÑOS - ЦВЕТА / ФОРМАТЫ

Piano Sega Grigio



60x120 - 23^{5/8}" x 47^{1/4}"

E7VU 98MH8R Nat. Rett. ● **771**



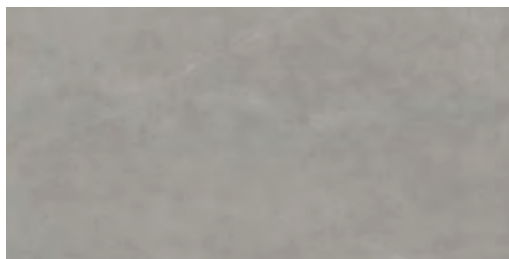
90x90 - 35^{7/16}" x 35^{7/16}"

E3YU N9MH8R Naturale Rett. ● **80**



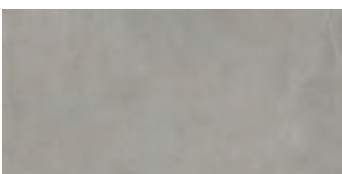
60x60 - 23^{5/8}" x 23^{5/8}"

E3ZD 60MH8R Nat. Rett. ● **662**



45x90 - 17^{11/16}" x 35^{7/16}"

E3ZS 94MH8R Naturale Rett. ● **73**



30x60 - 11^{13/16}" x 23^{5/8}"

E3ZL 63MH8R Nat. Rett. ● **61**

Si consiglia la posa con fuga 2 mm. - Laying with a 2 mm-joint is recommended. - Pose recommandée avec joints de 2 mm.
Es wird eine Fugenbreite von 2 mm empfohlen. - Se recomienda la colocación con juntas de 2 mm. - Рекомендуется укладка с швом 2 мм.

COLORI/FORMATI

COLOURS / SIZES - COULEURS / FORMATS - FARBEN / FORMATE - COLORES / TAMAÑOS - ЦВЕТА / ФОРМАТЫ

Piano Sega Sabbia

112



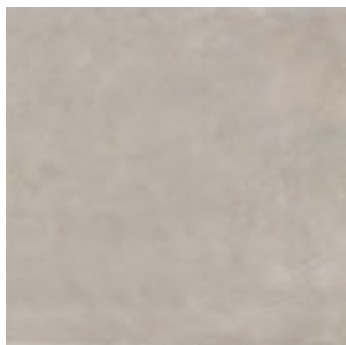
60x120 - 23^{5/8}" x 47^{1/4}"

E7VS 98MH3R Nat. Rett. ● **771**



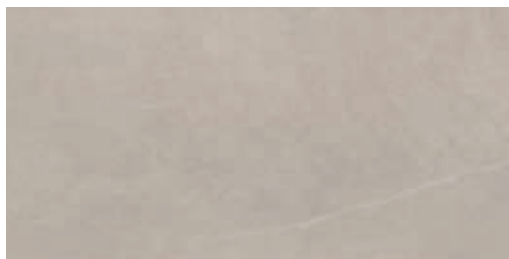
90x90 - 35^{7/16}" x 35^{7/16}"

E3YS N9MH3R Naturale Rett. ● **80**



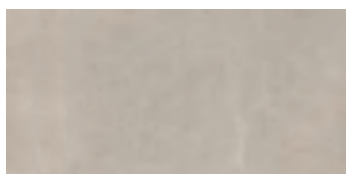
60x60 - 23^{5/8}" x 23^{5/8}"

E3Z9 60MH3R Nat. Rett. ● **662**



45x90 - 17^{11/16}" x 35^{7/16}"

E3ZQ 94MH3R Naturale Rett. ● **73**



30x60 - 11^{13/16}" x 23^{5/8}"

E3ZH 63MH3R Nat. Rett. ● **61**

Si consiglia la posa con fuga 2 mm. - Laying with a 2 mm-joint is recommended. - Pose recommandée avec joints de 2 mm.
Es wird eine Fugenbreite von 2 mm empfohlen. - Se recomienda la colocación con juntas de 2 mm. - Рекомендуется укладка с швом 2 мм.

COLORI/FORMATI

COLOURS / SIZES - COULEURS / FORMATS - FARBEN / FORMATE - COLORES / TAMAÑOS - ЦВЕТА / ФОРМАТЫ

Piano Sega Antracite

113



60x120 - 23^{5/8}" x 47^{1/4}"

E7VV 98MH9R Nat. Rett. ● **771**



90x90 - 35^{7/16}" x 35^{7/16}"

E3YV N9MH9R Naturale Rett. ● **80**



60x60 - 23^{5/8}" x 23^{5/8}"

E3ZE 60MH9R Nat. Rett. ● **662**



45x90 - 17^{11/16}" x 35^{7/16}"

E3ZT 94MH9R Naturale Rett. ● **73**



30x60 - 11^{13/16}" x 23^{5/8}"

E3ZM 63MH9R Nat. Rett. ● **61**

Si consiglia la posa con fuga 2 mm. - Laying with a 2 mm-joint is recommended. - Pose recommandée avec joints de 2 mm.
Es wird eine Fugenbreite von 2 mm empfohlen. - Se recomienda la colocación con juntas de 2 mm. - Рекомендуется укладка с швом 2 мм.

COLORI/FORMATI

COLOURS / SIZES - COULEURS / FORMATS - FARBEN / FORMATE - COLORES / TAMAÑOS - ЦВЕТА / ФОРМАТЫ

Fiammata

114



60x120 - 23^{5/8}" x 47^{1/4}"

E7VT 98MH5R Indoor Nat. Rett. ● 771



90x90 - 35^{7/16}" x 35^{7/16}"

E3YT N9MH5R Indoor Nat. Rett. ● 80



60x60 - 23^{5/8}" x 23^{5/8}"

E3ZA 60MH5R Indoor Nat. Rett. ● 662

E3ZC 60MH5RZ Outdoor R11 Nat. Rett. ● 662



45x90 - 17^{11/16}" x 35^{7/16}"

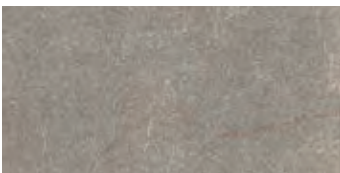
E3ZR 94MH5R Indoor Nat. Rett. ● 73

20MM



60x60 - 23^{5/8}" x 23^{5/8}"

E3YW X60MH5R Nat. Rett. ● 83



30x60 - 11^{13/16}" x 23^{5/8}"

E3ZJ 63MH5R Indoor Nat. Rett. ● 61

E3ZK 63MH5RZ Outdoor R11 Nat. Rett. ● 61

Si consiglia la posa con fuga 2 mm. - Laying with a 2 mm-joint is recommended. - Pose recommandée avec joints de 2 mm.
Es wird eine Fugenbreite von 2 mm empfohlen. - Se recomienda la colocación con juntas de 2 mm. - Рекомендуется укладка с швом 2 мм.

COLORI/FORMATI

COLOURS / SIZES - COULEURS / FORMATS - FARBEN / FORMATE - COLORES / TAMAÑOS - ЦВЕТА / ФОРМАТЫ

Burattato



30x60 - 11^{13/16}"x23^{5/8}"

ECER 63MH7R Nat. Rett. ● 61

Spacco Multicolor



30x60 - 11^{13/16}"x23^{5/8}"

ECEQ 63MH6R Nat. Rett. ● 61

Si consiglia la posa con fuga 2 mm. - Laying with a 2 mm-joint is recommended. - Pose recommandée avec joints de 2 mm.
Es wird eine Fugenbreite von 2 mm empfohlen. - Se recomienda la colocación con juntas de 2 mm. - Рекомендуется укладка с швом 2 мм.



E3Z5 13MH7
Brick Burattato Nat.
12,5x25 - 4^{15/16}"x9^{13/16}"

COLORI/FORMATI

COLOURS / SIZES - COULEURS / FORMATS - FARBEN / FORMATE - COLORES / TAMAÑOS - ЦВЕТА / ФОРМАТЫ

Brick

116



6x25 - 2³/₈" x 9¹³/₁₆"

E3YX 06MH2 Brick Spazzolata Nat. ● 60



6x25 - 2³/₈" x 9¹³/₁₆"

E3YY 06MH5 Brick Fiammata Nat. ● 60



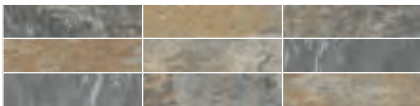
6x25 - 2³/₈" x 9¹³/₁₆"

E3Z1 06MH8 Brick Piano Sega Grigio Nat. ● 60



6x25 - 2³/₈" x 9¹³/₁₆"

E3Z0 06MH7 Brick Burattato Nat. ● 60



6x25 - 2³/₈" x 9¹³/₁₆"

E3YZ 06MH6 Brick Spacco Multicolor Nat. ● 60

Si consiglia la posa con fuga 3 mm. - Laying with a 3 mm-joint is recommended.
Pose recommandée avec joints de 3 mm. - Es wird eine Fugenbreite von 3 mm empfohlen.
Se recomienda la colocación con juntas de 3 mm. - Рекомендуется укладка с швом 3 мм.



E3ZK 63MH5RZ
Fiammata Outdoor R11 Nat. Rett.
30x60 - 11¹³/₁₆" x 23⁵/₈"

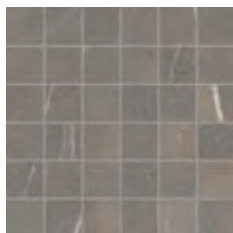
E3YZ 06MH6
Brick Spacco Multicolor Nat.
6x25 - 2³/₈" x 9¹³/₁₆"

DECORI

DECORS - DECORS - DEKORE - DECORADOS - ДЕКОРЫ

MOSAICO 5X5*

Tessera - Chip 4,8x4,8 - 17/8"x17/8"



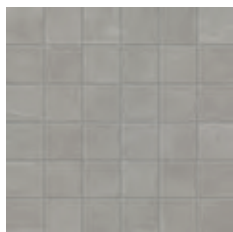
30x30 - 11^{13/16}"x11^{13/16}"
E458 I30MH2R
Spazzolata Indoor Nat. ● 93



30x30 - 11^{13/16}"x11^{13/16}"
E45A I30MH5R
Fiammata Indoor Nat. ● 93



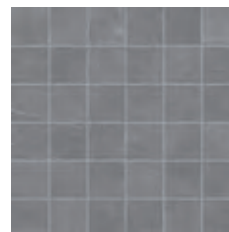
30x30 - 11^{13/16}"x11^{13/16}"
E457 I30MH0R
P. S. Argento Nat. ● 93



30x30 - 11^{13/16}"x11^{13/16}"
E45C I30MH8R
P. S. Grigio Nat. ● 93

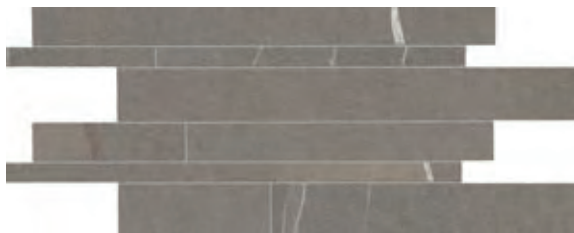


30x30 - 11^{13/16}"x11^{13/16}"
E459 I30MH3R
P. S. Sabbia Nat. ● 93



30x30 - 11^{13/16}"x11^{13/16}"
E45D I30MH9R
P. S. Antracite Nat. ● 93

LISTELLI SFALSATI*



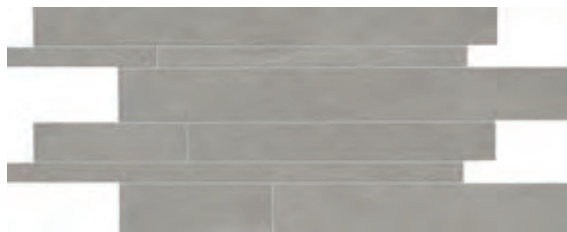
30x60 - 11^{13/16}"x23^{5/8}"
E45F M63MH2R Spazzolata Indoor Nat. ● 87



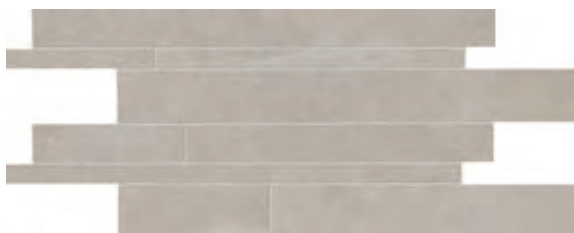
30x60 - 11^{13/16}"x23^{5/8}"
E45H M63MH5R Fiammata Indoor Nat. ● 87



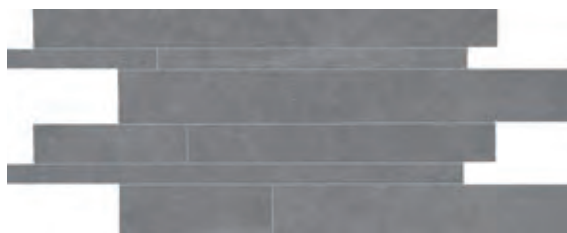
30x60 - 11^{13/16}"x23^{5/8}"
E45E M63MH0R Piano Segna Argento Nat. ● 87



30x60 - 11^{13/16}"x23^{5/8}"
E45J M63MH8R Piano Segna Grigio Nat. ● 87



30x60 - 11^{13/16}"x23^{5/8}"
E45G M63MH3R Piano Segna Sabbia Nat. ● 87



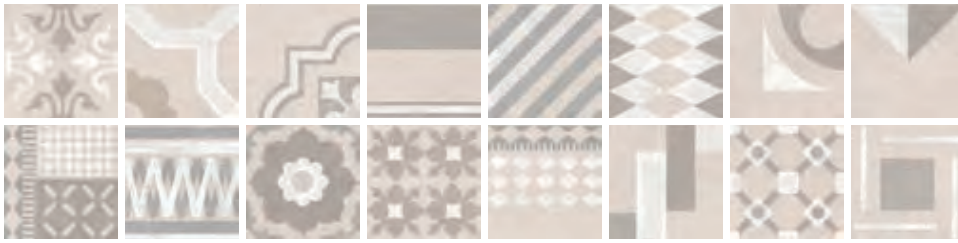
30x60 - 11^{13/16}"x23^{5/8}"
E45K M63MH9R Piano Segna Antracite Nat. ● 87

* Su rete in fibra - On fibre mesh backing - Sur filet en fibre de verre - Auf Glasfasernetz - Sobre malla de fibra - На волоконной сетке

DECORI

DECORS - DECORS - DEKORE - DECORADOS - ДЕКОРЫ

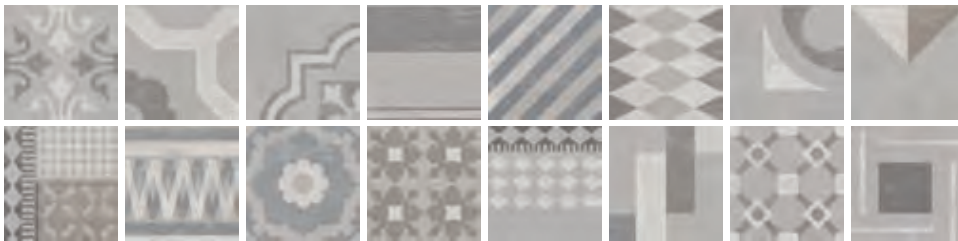
DECORO ORNAMENTO



15x15 - 5⁷/₈"x5⁷/₈"

E45L 15MH0RB Piano Segra Argento Nat.

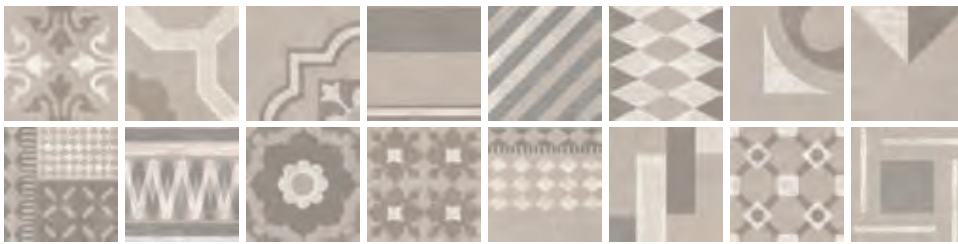
● 85



15x15 - 5⁷/₈"x5⁷/₈"

E45Q 15MH8RB Piano Segra Grigio Nat.

● 85



15x15 - 5⁷/₈"x5⁷/₈"

E45N 15MH3RB Piano Segra Sabbia Nat.

● 85



15x15 - 5⁷/₈"x5⁷/₈"

E45R 15MH9RB Piano Segra Antracite Nat.

● 85

DECORI

DECORS - DECORS - DEKORE - DECORADOS - ДЕКОРЫ

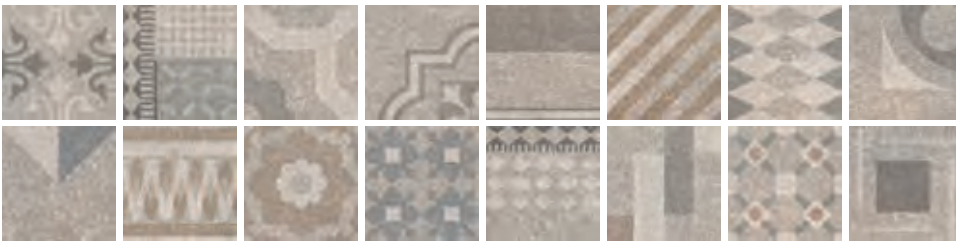
DECORO ORNAMENTO



15x15 - 5⁷/₈"x5⁷/₈"

E45M 15MH2RB Spazzolata Indoor Nat.

● 85

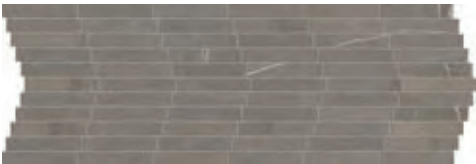


15x15 - 5⁷/₈"x5⁷/₈"

E45P 15MH5RB Fiammata Indoor Nat.

● 85

MOSAICO ARELLA*



21x60 - 8¹/₄"x23⁵/₈"

E46L N63MH2R Spazzolata Indoor Nat.

● 100



21x60 - 8¹/₄"x23⁵/₈"

E46P N63MH8R P. S. Grigio Nat.

● 100



21x60 - 8¹/₄"x23⁵/₈"

E46N N63MH5R Fiammata Indoor Nat.

● 100



21x60 - 8¹/₄"x23⁵/₈"

E46M N63MH3R P. S. Sabbia Nat.

● 100



21x60 - 8¹/₄"x23⁵/₈"

E46K N63MH0R P. S. Argento Nat.

● 100



21x60 - 8¹/₄"x23⁵/₈"

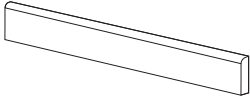
E46Q N63MH9R P. S. Antracite Nat.

● 100

PEZZI SPECIALI

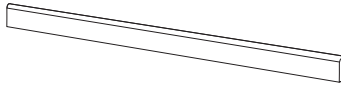
TRIMS - PIECES SPECIALES - FORMTEILE - PIEZAS ESPECIALES - СПЕЦИАЛЬНЫЕ ИЗДЕЛИЯ

120



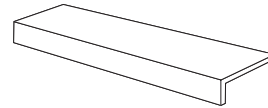
BATTISCOPA - SKIRTING
7,5x60 - 2^{15/16}"x23^{5/8}" Nat. Rett.
Pcs. Box 15 - ML x Box 9

- E43Z 87MH2R** Spazzolata Indoor ● 11
- E441 87MH5R** Fiammata Indoor ● 11
- E43Y 87MH0R** P. S. Argento ● 11
- E442 87MH8R** P. S. Grigio ● 11
- E440 87MH3R** P. S. Sabbia ● 11
- E443 87MH9R** P. S. Antracite ● 11



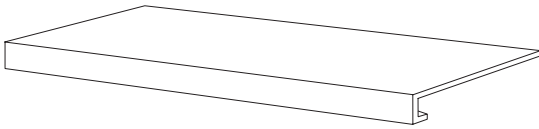
BATTISCOPA - SKIRTING
4,6x90 - 1^{13/16}"x35^{7/16}" Nat. Rett.
Pcs. Box 8 - ML x Box 7,20

- E46E B3MH2R** Spazzolata Indoor ● 17
- E46G B3MH5R** Fiammata Indoor ● 17
- E46D B3MH0R** P. S. Argento ● 17
- E46H B3MH8R** P. S. Grigio ● 17
- E46F B3MH3R** P. S. Sabbia ● 17
- E46J B3MH9R** P. S. Antracite ● 17



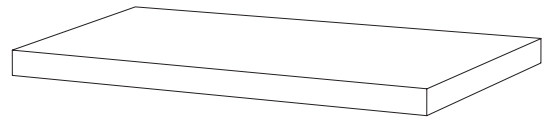
ELEMENTO A "L" - L SHAPED PIECE
15x60x5 - 5^{7/8}"x23^{5/8}"x1^{15/16}" Nat. Rett.
Pcs. Box 4 - ML x Box 2,40

- EC9K 99MH2RZ** Spazzolata Outdoor ● 43
- EAQN 99MH5RZ** Fiammata Outdoor ● 43



GRADONE - STEP
33x60x3,2x3,2 - 12^{15/16}"x23^{5/8}"x1^{1/4}"x1^{1/4}" Nat. Rett.
Pcs. Box 4 - ML x Box 2,40

- EAPW 1CMH2R** Spazzolata Indoor ● 79
- EAPY 1CMH5R** Fiammata Indoor ● 79
- EAPV 1CMH0R** P. S. Argento ● 79
- EAPZ 1CMH8R** P. S. Grigio ● 79
- EAPX 1CMH3R** P. S. Sabbia ● 79
- EAQ0 1CMH9R** P. S. Antracite ● 79



ANGOLARE DX / SX - CORNER TILE DX / SX
33x60x3,2x3,2 - 12^{15/16}"x23^{5/8}"x1^{1/4}"x1^{1/4}" Nat. Rett.
Pcs. Box 2 - ML x Box 1,20

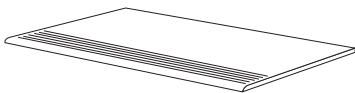
- EAQ3 4AMH2RD / EAQ4 4AMH2RS** Spazzolata Indoor ● 93
- EAQ7 4AMH5RD / EAQ8 4AMH5RS** Fiammata Indoor ● 93
- EAQ1 4AMH0RD / EAQ2 4AMH0RS** P. S. Argento ● 93
- EAQ9 4AMH8RD / EAQA 4AMH8RS** P. S. Grigio ● 93
- EAQ5 4AMH3RD / EAQ6 4AMH3RS** P. S. Sabbia ● 93
- EAQC 4AMH9RD / EAQD 4AMH9RS** P. S. Antracite ● 93

33x120x3,2x3,2 - 12^{15/16}"x47^{1/4}"x1^{1/4}"x1^{1/4}" Nat. Rett.
Pcs. Box 2 - ML x Box 2,40

- ECCN CRMH2R** Spazzolata Indoor ● 95
- ECCQ CRMH5R** Fiammata Indoor ● 95
- ECCM CRMH0R** P. S. Argento ● 95
- ECCR CRMH8R** P. S. Grigio ● 95
- ECCP CRMH3R** P. S. Sabbia ● 95
- ECCS CRMH9R** P. S. Antracite ● 95

33x120x3,2x3,2 - 12^{15/16}"x47^{1/4}"x1^{1/4}"x1^{1/4}" Nat. Rett.
Pcs. Box 1 - ML x Box 1,20

- ECCA ACMH2RD / ECCC ACMH2RS** Spazzolata Indoor ● 100
- ECCF ACMH5RD / ECCG ACMH5RS** Fiammata Indoor ● 100
- ECC8 ACMH0RD / ECC9 ACMH0RS** P. S. Argento ● 100
- ECCH ACMH8RD / ECCJ ACMH8RS** P. S. Grigio ● 100
- ECCD ACMH3RD / ECCE ACMH3RS** P. S. Sabbia ● 100
- ECCK ACMH9RD / ECCL ACMH9RS** P. S. Antracite ● 100



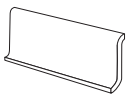
GRADINO - STAIR TREAD
33x60 - 12^{15/16}"x23^{5/8}" Nat. Rett.
Pcs. Box 6 - ML x Box 3,60

- EAQF 71MH2R** Spazzolata Indoor ● 61
- EAQJ 71MH2RZ** Spazzolata Outdoor R11 ● 61
- EAQH 71MH5R** Fiammata Indoor ● 61
- EAQJ 71MH5RZ** Fiammata Outdoor R11 ● 61
- EAQE 71MH0R** P. S. Argento ● 61
- EAQK 71MH8R** P. S. Grigio ● 61
- EAQG 71MH3R** P. S. Sabbia ● 61
- EAQL 71MH9R** P. S. Antracite ● 61



BECCO CIVETTA - BULLNOSE
6x25 - 2^{3/8}"x10" Nat.
Pcs. Box 34

- EAR5 106MH2** Spazzolata ● 7
- EAR6 106MH5** Fiammata ● 7
- EAR9 106MH8** P. S. Grigio ● 7
- EAR7 106MH6** Spacco Multicolor ● 7
- EAR8 106MH7** Burattato ● 7



COVE BASE*
16x30 - 6^{5/16}"x11^{13/16}" Nat.
Pcs. Box 30

- EAQM 89MH2** Spazzolata ● 28
- EAQQ 89MH5** Fiammata ● 28
- EAQT 89MH8** P. S. Grigio ● 28
- EAQR 89MH6** Spacco Multicolor ● 28
- EAQS 89MH7** Burattato ● 28



COVE BASE IN CORNER
2,5x16 - 5/16"x6^{5/16}" Nat.
Pcs. Box 10

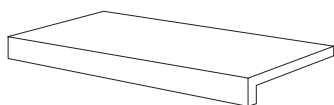
- EAQZ AIMH2** Spazzolata ● 26
- EAR0 AIMH5** Fiammata ● 26
- EAR3 AIMH8** P. S. Grigio ● 26
- EAR1 AIMH6** Spacco Multicolor ● 26
- EAR2 AIMH7** Burattato ● 26



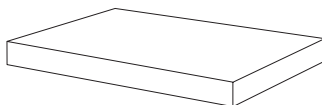
COVE BASE OUT CORNER
2,5x16 - 5/16"x6^{5/16}" Nat.
Pcs. Box 10

- EAQU AEMH2** Spazzolata ● 26
- EAQV AEMH5** Fiammata ● 26
- EAQY AEMH8** P. S. Grigio ● 26
- EAQW AEMH6** Spacco Multicolor ● 26
- EAQX AEMH7** Burattato ● 26

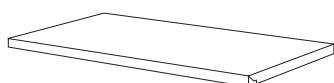
*ordine minimo 500 pezzi - Minimum order: 500 pieces - Commande minimale 500 pièces - Mindestbestellmenge 500 Stücke - Pedido mínimo 500 piezas - Минимальный заказ - 500 штук



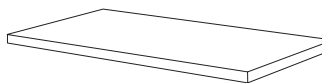
GRADONE - STEP
33x60x5 - 12^{15/16"} x 23^{5/8"} x 1^{15/16"}
Nat. Rett.
Pcs. Box 2 - ML x Box 1,20
EC87 2SMH2R Spazzolata ● 83
EARA 2SMH5R Fiammata ● 83



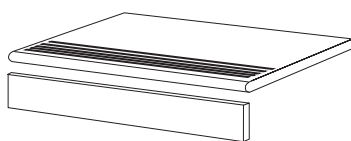
ANGOLARE DX / SX
CORNERTILE DX / SX
33x60x5 - 12^{15/16"} x 23^{5/8"} x 1^{15/16"} Nat. Rett.
Pcs. Box 2 - ML x Box 1,20
EC88 2SMH2RD / EC89 2SMH2RS Spazzolata ● 93
EARC 2SMH5RD / EARD 2SMH5RS Fiammata ● 93



TERMINALE - ENDINGPIECE
33x60x2,5 - 12^{15/16"} x 23^{5/8"} x 1^{15/16"}
Nat. Rett.
Pcs. Box 2 - ML x Box 1,20
EC8A 3SMH2R Spazzolata ● 83
EARE 3SMH5R Fiammata ● 83



ANGOLO TERMINALE DX / SX
ENDINGPIECE CORNER DX / SX
33x60x2,5 - 12^{15/16"} x 23^{5/8"} x 1^{15/16"} Nat. Rett.
Pcs. Box 2 - ML x Box 1,20
EC8C 3SMH2RD / EC8D 3SMH2RS Spazzolata ● 93
EARF 3SMH5RD / EARG 3SMH5RS Fiammata ● 93



GRADINO - STAIR TREAD
33x60 - 12^{15/16"} x 23^{5/8"} Nat. Rett.
Pcs. Box 2 - ML x Box 1,20
EC8F 4SMH2R Spazzolata ● 77
EARJ 4SMH5R Fiammata ● 77

ALZATA - RISER
16,5x60 - 6^{1/2"} x 23^{5/8"} Nat. Rett.
Pcs. Box 2 - ML x Box 1,20
EC86 1TMH2R Spazzolata ● 40
EAR4 1TMH5R Fiammata ● 40

IMBALLI E PESI

PACKING AND WEIGHT - EMBALLAGES ET POIDS - VERPACKUNG UND GEWICHT - EMBALAJES Y PESOS - УПАКОВКА И ВЕС

Formato Size Format Format Tamaño Формат cm	Spessore Thickness Epaisseur Stärke Espesor Толщина mm	Pz. x Mq. Pieces x Sqm Pcs / M ² Stk. x Qm Pzs x Mc. шт x Кв.М.	Pz. x Scat. Pieces x Box Pcs / Bte Stk. x Krt. Pzs x Caja шт x Кор.	Mq. x Scat. Sqm x Box M ² / Bte Qm x Krt. Mc. x Caja Кв.М. x Кор.	Peso x Scat. Weight x Box Poids / Bte Gewicht x Krt. Peso x Caja Вес x Кор. Kg	Scat. x Pal. Boxes x Pal. Bte / Pal. Krt. x Pal. Cajas x Pal. Кор. x Подд.	Mq. x Pal. Sqm x Pal. M ² / Pal. Qm x Pal. Mc. x Pal. Кв.М x Подд.	Peso x Pal. Weight x Pal. Poids / Pal. Gewicht x Pal. Peso x Pal. Вес x Подд. Kg
60x120 Naturale - Lappato	10	1,39	2	1,440	34,04	36	51,84	1225
90x90 Naturale - Lappato	10	1,23	2	1,620	37,31	24	38,88	895
45x90 Naturale - Lappato	10	2,47	3	1,215	27,72	32	38,88	887
60x60 Naturale - Lappato	10	2,78	3	1,080	24,59	40	43,20	984
60x60 Naturale 20MM	20	2,78	2	0,720	32,49	32	23,04	1040
30x60 Naturale - Lappato	10	5,56	6	1,080	24,23	40	43,20	969
6x25 Naturale	9	66,67	34	0,510	9,88	99	50,49	978
30x60 Listelli Sfalsati	10	5,56	4	0,720	17,37	30	21,60	521
21x60 Mosaico Arella	10	7,94	4	0,504	15,45	60	25,20	927
30x30 Mosaico	10	11,11	5	0,450	10,80	60	27,00	648
15x15 Decoro Ornamento	10	44,44	36	0,810	18,82	56	45,36	1054