

PIETRAFORTE

THE ELEGANCE OF RENAISSANCE



PIETRAFORTE

Pietra forte è un gres porcellanato che nasce dalla volontà di riprendere, in versione ceramica, la caratteristica pietra arenaria a grana fine tipica dell'area fiorentina, detta appunto “pietra forte” per le sue caratteristiche di resistenza.

La pietra originale “Pietraforte” è stata ampiamente utilizzata nel passato per opere prettamente edili in quanto, data la sua durezza e di conseguenza la sua difficoltà ad essere scolpita, solo in pochi casi ha avuto utilizzo per scopi decorativi.

Famosi edifici fiorentini come Palazzo Vecchio, Palazzo Pitti, Palazzo Medici e Palazzo Strozzi sono stati costruiti nell'antico passato con questa pietra e in tempi più recenti è stata usata per la costruzione della stazione di S. Maria Novella, considerata una delle espressioni più alte dell'architettura moderna del novecento.

Oggi l'estrazione della “pietra forte” si è ridotta moltissimo in quanto molte cave originarie sono andate per lo più ad esaurimento.

PIETRAFORTE in gres porcellanato viene prodotta in 4 diverse cromie, nei formati 60x120 (24”x48”) – 30x120 (12”x48”) – 60x60 (24”x24”) – 30x60 (12”x24”) con le varianti di superficie naturale rettificato e lappato rettificato.

Questa collezione si propone per essere utilizzata in ambienti residenziali, commerciali, pubblici che vogliono essere espressione di una architettura di tradizione classica oppure di tendenza moderna od anche estremamente minimalista.

EN PIETRAFORTE

Pietraforte is a porcelain tile which perfectly evokes the natural quality of fine-grained Florentine sandstone, known as pietra forte (strong stone) thanks to its outstanding resistance to wear.

In the past, Florentine pietra forte stone was highly prized in building for its durability and resistance to scoring, and was only occasionally used for decorative applications.

Many renowned Florentine buildings, including the Palazzo Vecchio, Palazzo Pitti, Palazzo Medici and Palazzo Strozzi were built with this stone, and it was more recently used for the S. Maria Novella railway station, generally recognised as a masterpiece of 20th Century architecture. Unfortunately, the original pietra forte is now only seldom used, since the original quarries have been largely mined out.

PIETRAFORTE porcelain tiles are made in 4 colours, in the 60x120 (24”x48”), 30x120 (12”x48”), 60x60 (24”x24”) and 30x60 (12”x24”) formats, in the natural ground and honed ground finishes.

The collection is intended to be used in residential, commercial and public spaces, and is an ideal match for both classic and modern architectural styles, as well as very minimalist interior designs.

FR PIETRAFORTE

Pietra forte est un grès cérame qui naît de la volonté de reprendre, en version céramique, la caractéristique pierre de grès à grain fin typique de la région de Florence, appelée « pietra forte » en raison de sa résistance si caractéristique.

La pierre originale Pietraforte a souvent été utilisée par le passé, principalement pour des œuvres de construction civile car, du fait de sa dureté la rendant presque impossible à sculpter, elle ne pouvait que difficilement être utilisée à des fins décoratives.

De célèbres édifices florentins tels que Palazzo Vecchio, Palazzo Pitti, Palazzo Medici et Palazzo Strozzi ont été autrefois construits avec cette pierre qui a été, plus récemment, utilisée pour la construction de la gare S. Maria Novella, considérée comme l'une des expressions les plus abouties de l'architecture moderne du XXe siècle.

Aujourd'hui, l'extraction de la pietra forte est en chute libre car de nombreuses carrières se sont épuisées.

PIETRAFORTE en grès cérame est disponible en 4 coloris différents, dans les formats 60x120 (24 po x 48 po) – 30x120 (12 po x 48 po) – 60x60 (24 po x 24 po) – 30x60 (12 po x 24 po) et dans les variantes de surface mate rectifiée et polie rectifiée.

Cette collection est proposée pour des contextes résidentiels, commerciaux, ou publics qui veulent se faire le chanfre d'une architecture de tradition classique, ou d'inspiration moderne voire extrêmement minimaliste.

DE PIETRAFORTE

Bei Pietra forte handelt es sich um ein Feinsteinzeug, mit welchem in Keramikausführung die Eigenschaften des florentinischen, feinkörnigen Sandsteins erneut hervorgehoben werden sollen, der wegen seiner Materialresistenz eben “pietra forte” genannt wird.

Der Naturstein “Pietraforte” wurde in der Vergangenheit aufgrund seiner Härte und der daraus resultierenden Schwierigkeit, ihn zu bearbeiten, fast ausnehmend allein im Bauwesen eingesetzt und daher nur in seltenen Fällen zu dekorativen Zwecken.

Berühmte Gebäude in der italienischen Stadt Florenz wie Palazzo Vecchio, Palazzo Pitti, Palazzo Medici und Palazzo Strozzi wurden in der Antike aus diesem Stein errichtet, in jüngerer Vergangenheit auch Bauten wie der Bahnhof von S. Maria Novella, der als einer der wichtigsten Bauwerke der modernen Architektur des 20. Jahrhunderts gilt.

Der Materialabbau von “pietra forte” ist heute stark zurückgegangen, da viele Natursteinbrüche zwischenzeitlich erschöpft sind.

PIETRAFORTE in Feinsteinzeug wird in 4 verschiedenen Farben und in den Formaten 60x120 (24”x48”) – 30x120 (12”x48”) – 60x60 (24”x24”) – 30x60 (12”x24”) hergestellt und mit den Varianten der natürlich geschliffenen oder geläpft geschliffenen Oberfläche.

Diese Kollektion empfiehlt sich zum Einsatz in Wohnbereichen, in kommerziellen und öffentlichen Räumlichkeiten, die Ausdruck einer traditionell klassischen Architektur, eines eher modernen Trends oder aber einer extrem minimalistischen Stilrichtung sein möchten.

PIETRAFORTE

THE ELEGANCE OF RENAISSANCE

60x120
24”x48”

30x120
12”x48”

60x60
24”x24”

30x60
12”x24”

Gres porcellanato con colorazione in massa.

Porcelain stoneware with mass colouring.

Grès cérame avec pate colorée.

Durchgefärbtes Feinsteinzeug.

BIANCO
2—5



BEIGE
6—9



GRIGIO
10—13



NERO
14—19



BIANCO





BEIGE





and then
water, sug
gnara bna
Arrang
ions



VOTTATVAV



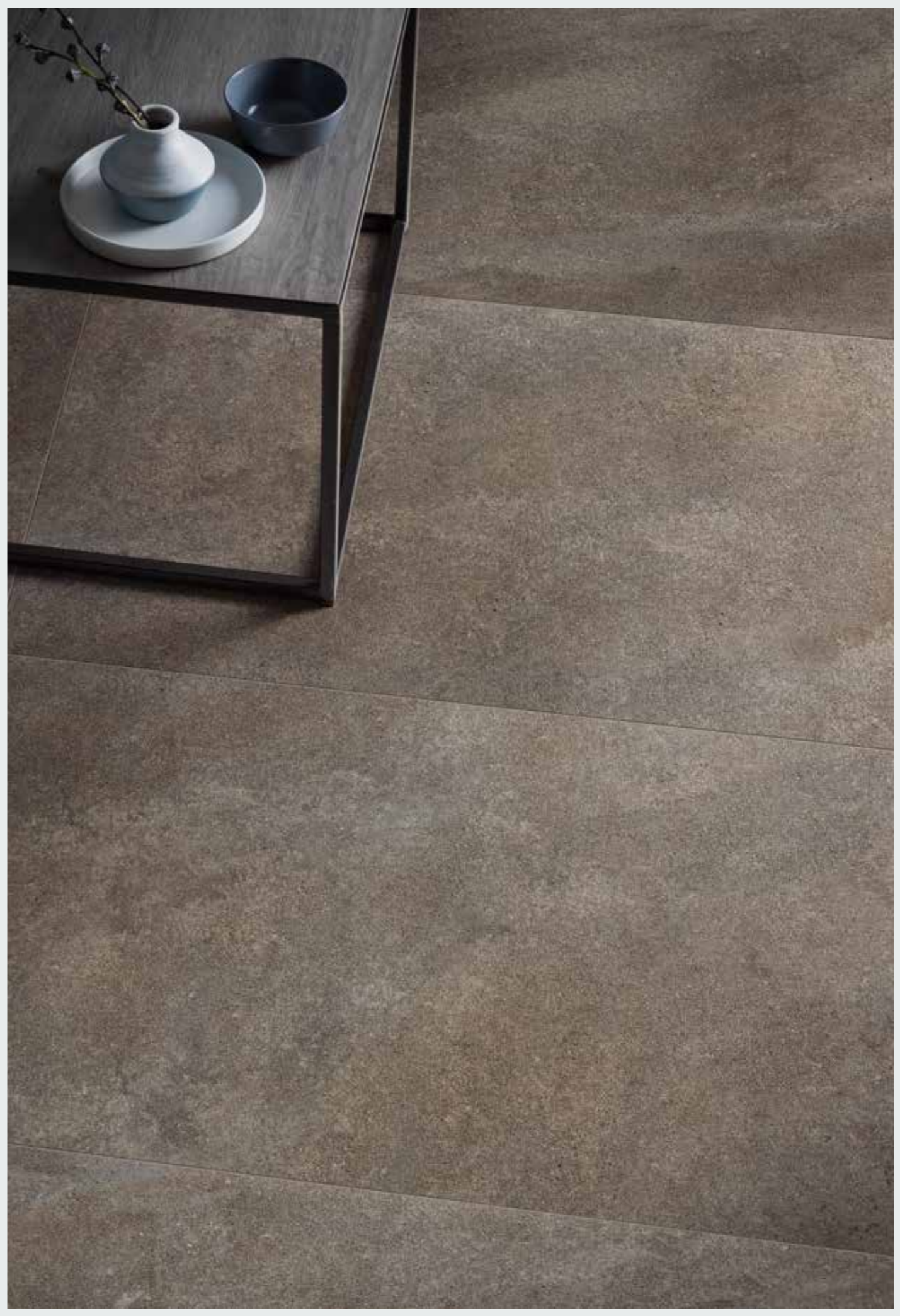
HTTW
VOT

Directions:

Arrange onion slices evenly over the
and then place the roast on top of the onion
with sugar, vinegar, soy sauce, ketchup, and
powder, and hot sauce, pour over roast.



GRIGIO





NERO







FORMATI

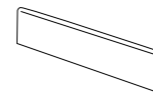
Sizes. Formats. Formate

60x120 24"x48" Nat Rett/Lap Rett . 30x120 12"x48" Nat Rett/Lap Rett .

60x60 24"x24" Nat Rett/Lap Rett . 30x60 12"x24" Nat . 29,7x59,5 12"x24" Nat Rett/Lap Rett .

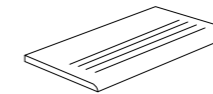
PEZZI SPECIALI.

Trims. Pieces speciales. Formstücke.



Battiscopa Ret.
7,5x60 . 3"x24"
34▲_PC/BOX 14

7278617 BEIGE RET
7278607 BIANCO RET
7278627 GRIGIO RET
7278637 NERO RET



STEP Ret.
29,7x59,5 . 12"x48"
48▲_PC/BOX 7

7278616 BEIGE RET
7278606 BIANCO RET
7278626 GRIGIO RET
7278636 NERO RET

BIANCO



60x120 . 24"x48" | 7351425 NAT RET | 99 ●
60x120 . 24"x48" | 7351465 LAP RET | 110 ●
30x120 . 12"x48" | 7351505 NAT RET | 99 ●
30x120 . 12"x48" | 7351545 LAP RET | 110 ●
60x60 . 24"x24" | 7351765 NAT RET | 99 ●
60x60 . 24"x24" | 7351805 LAP RET | 110 ●
30x60 . 12"x24" | 7278605 NAT | 78 ●
29,7x59,5 . 12"x24" | 7278645 NAT RET | 85 ●
29,7x59,5 . 12"x24" | 7278685 LAP RET | 93 ●

mosaico 5x5 (2"x2")



30x30 . 12"x12" | 7278725 NAT | 124 ●
30x30 . 12"x12" | 7278765 LAP RET | 124 ●

BEIGE



60x120 . 24"x48" | 7351435 NAT RET | 99 ●
60x120 . 24"x48" | 7351475 LAP RET | 110 ●
30x120 . 12"x48" | 7351515 NAT RET | 99 ●
30x120 . 12"x48" | 7351555 LAP RET | 110 ●
60x60 . 24"x24" | 7351755 NAT RET | 99 ●
60x60 . 24"x24" | 7351795 LAP RET | 110 ●
30x60 . 12"x24" | 7278615 NAT | 78 ●
29,7x59,5 . 12"x24" | 7278655 NAT RET | 85 ●
29,7x59,5 . 12"x24" | 7278695 LAP RET | 93 ●

mosaico 5x5 (2"x2")



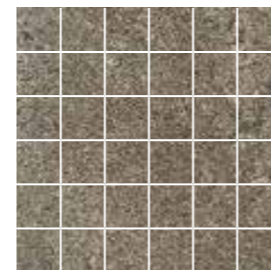
30x30 . 12"x12" | 7278735 NAT | 124 ●
30x30 . 12"x12" | 7278775 LAP RET | 124 ●

GRIGIO



60x120 . 24"x48" | 7351445 NAT RET | 99 ●
60x120 . 24"x48" | 7351485 LAP RET | 110 ●
30x120 . 12"x48" | 7351525 NAT RET | 99 ●
30x120 . 12"x48" | 7351565 LAP RET | 110 ●
60x60 . 24"x24" | 7351775 NAT RET | 99 ●
60x60 . 24"x24" | 7351815 LAP RET | 110 ●
30x60 . 12"x24" | 7278625 NAT | 78 ●
29,7x59,5 . 12"x24" | 7278665 NAT RET | 85 ●
29,7x59,5 . 12"x24" | 7278705 LAP RET | 93 ●

mosaico 5x5 (2"x2")



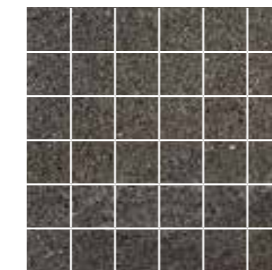
30x30 . 12"x12" | 7278745 NAT | 124 ●
30x30 . 12"x12" | 7278785 LAP RET | 124 ●

NERO



60x120 . 24"x48" | 7351455 NAT RET | 99 ●
60x120 . 24"x48" | 7351495 LAP RET | 110 ●
30x120 . 12"x48" | 7351535 NAT RET | 99 ●
30x120 . 12"x48" | 7351575 LAP RET | 110 ●
60x60 . 24"x24" | 7351785 NAT RET | 99 ●
60x60 . 24"x24" | 7351825 LAP RET | 110 ●
30x60 . 12"x24" | 7278635 NAT | 78 ●
29,7x59,5 . 12"x24" | 7278675 NAT RET | 85 ●
29,7x59,5 . 12"x24" | 7278715 LAP RET | 93 ●

mosaico 5x5 (2"x2")



30x30 . 12"x12" | 7278755 NAT | 124 ●
30x30 . 12"x12" | 7278795 LAP RET | 124 ●

PESI, MISURE E CONTENUTO DEI COLLI

Weight, size and contents of packaging poids. Poids dimensions, conteneur des colis. Verpackungsgrößen Gewichte.

FORMATO Size Format Formate	SPESSORE Thickness Epaisseur Dicke	PZ/COLLO Pcs for box Pcs for boite Stück pro karton	MQ/COLLO Sqm for box M ² /boite M ² pro karton	KG/COLLO Kgs for box Kg/boite Kg pro karton	CO/PALETTA Boxes for pallet Boite/pal Kartons pro palette	MQ/PALETTA Sqm for pallet M ² /pal M ² pro palette	KG/PALETTA Kgs for pallet Kg/pal Kg pro palette
60x120	10 mm	2	1,44	32	36	51,84	1152
30x120	10 mm	3	1,08	24	20	21,60	480
60x60	10 mm	3	1,06	24	40	42,48	960

PESI, MISURE E CONTENUTO DEI COLLI

Weight, size and contents of packaging poids. Poids dimensions, conteneur des colis. Verpackungsgrößen Gewichte.

FORMATO Size Format Formate	SPESSORE Thickness Epaisseur Dicke	PZ/COLLO Pcs for box Pcs for boite Stück pro karton	MQ/COLLO Sqm for box M ² /boite M ² pro karton	KG/COLLO Kgs for box Kg/boite Kg pro karton	CO/PALETTA Boxes for pallet Boite/pal Kartons pro palette	MQ/PALETTA Sqm for pallet M ² /pal M ² pro palette	KG/PALETTA Kgs for pallet Kg/pal Kg pro palette
30x60	9 mm	7	1,26	26	40	50,40	1040
29,7x59,5	9 mm	7	1,24	25	40	49,60	1000
30x30 mosaico 5x5	9 mm	11	1,00	19	30	30,00	570,00



Sede legale e amministrativa
NUOVA RIWAL CERAMICHE s.r.l.
Via Ghiarola Nuova, 101
41042 Fiorano Modenese (MO) Italy



Via della Repubblica, 16
42014 Roteglia di Castellarano
Reggio Emilia - Italy
Tel. +39 0536 869211
Fax +39 0536 851502
Fax +39 0536 832643
www.alfa-lux.it
export.alfa@riwal.it
italia.alfa@riwal.it