

PROJECT

30x90 / 12"x36"
75x75 / 30"x30"

Project White & Project Dec White – 30x90 cm - 12"x36"



Corner & Side-Project Grey – 30x90 cm · 12"x36"



Project Desert & Project Dec Desert – 30x90 cm · 12"x36"



Corner & Side-Project Grey – 30x90 cm · 12"x36"



Side-Project Desert – 30x90 cm · 12"x36"



Project Grey – 75x75 cm · 30"x30"

PROJECT

Mate Matt
Rectificado Rectified
Destonificado Shading variation
Imágenes no repetitivas Different skill-screen effects

WB



Project White

30x90 cm · 12"x36"

G-500

WB

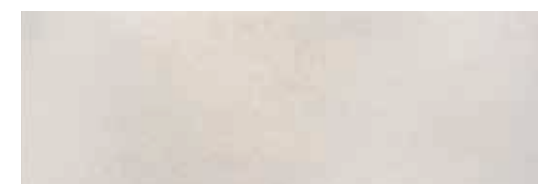


Side-Project White

30x90 cm · 12"x36"

G-510

WB

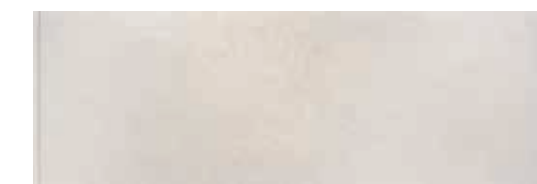


Project Desert

30x90 cm · 12"x36"

G-500

WB



Side-Project Desert

30x90 cm · 12"x36"

G-510

WB

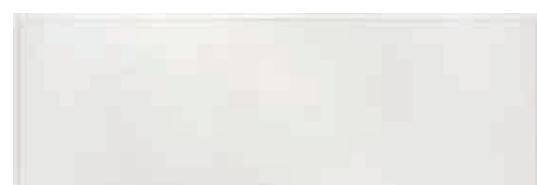


Project Dec White

30x90 cm · 12"x36"

G-510

WB



Corner-Project White

30x90 cm · 12"x36"

G-510

WB



Project Dec Desert

30x90 cm · 12"x36"

G-510

WB



Corner-Project Desert

30x90 cm · 12"x36"

G-510

PR

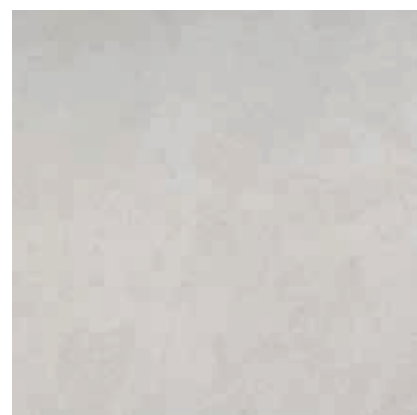


Project Desert

75x75 cm · 30"x30"

G-750

PR



Project Grey

75x75 cm · 30"x30"

G-750

PR



Project Taupe

75x75 cm · 30"x30"

G-750

PR

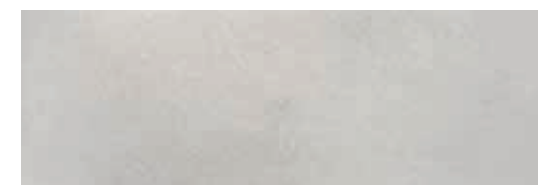


rodapié Project Desert/Grey/Taupe

7,5x75 cm · 3"x30"

G-953

WB



Project Grey

30x90 cm · 12"x36"

G-500

WB



Side-Project Grey

30x90 cm · 12"x36"

G-510

WB

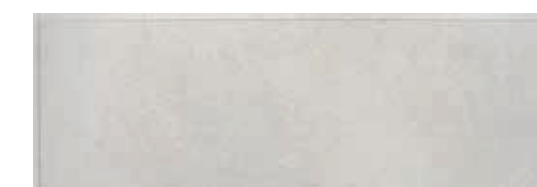


Project Dec Grey

30x90 cm · 12"x36"

G-510

WB



Corner-Project Grey

30x90 cm · 12"x36"

G-510

FORMATO SIZE	ESPESOR THICKNESS (mm)	M ² / CAJA SQM / BOX	PIEZAS / CAJA PIECES / BOX	KG / CAJA KG / BOX (aprox)	CAJAS / EUROPALLET BOXES / EUROPALLET	M ² / EUROPALLET SQM / EUROPALLET	KG / EUROPALLET KG / EUROPALLET <small>(bruto gross weight)</small>	PALLETS / CONT. 20' PALLETS / CONT. 20'
75x75	10,2	1,125	2	25,5	45	50,625	1.215	20
7,5x75	10,2	—	15	20	—	—	—	—

FORMATO SIZE	ESPESOR THICKNESS (mm)	M ² / CAJA SQM / BOX	PIEZAS / CAJA PIECES / BOX	KG / CAJA KG / BOX (aprox)	CAJAS / EUROPALLET BOXES / EUROPALLET	M ² / EUROPALLET SQM / EUROPALLET	KG / EUROPALLET KG / EUROPALLET <small>(bruto gross weight)</small>	PALLETS / CONT. 20' PALLETS / CONT. 20'
30x90	10,6	1,08	4	18,84	51	55,08	983	22