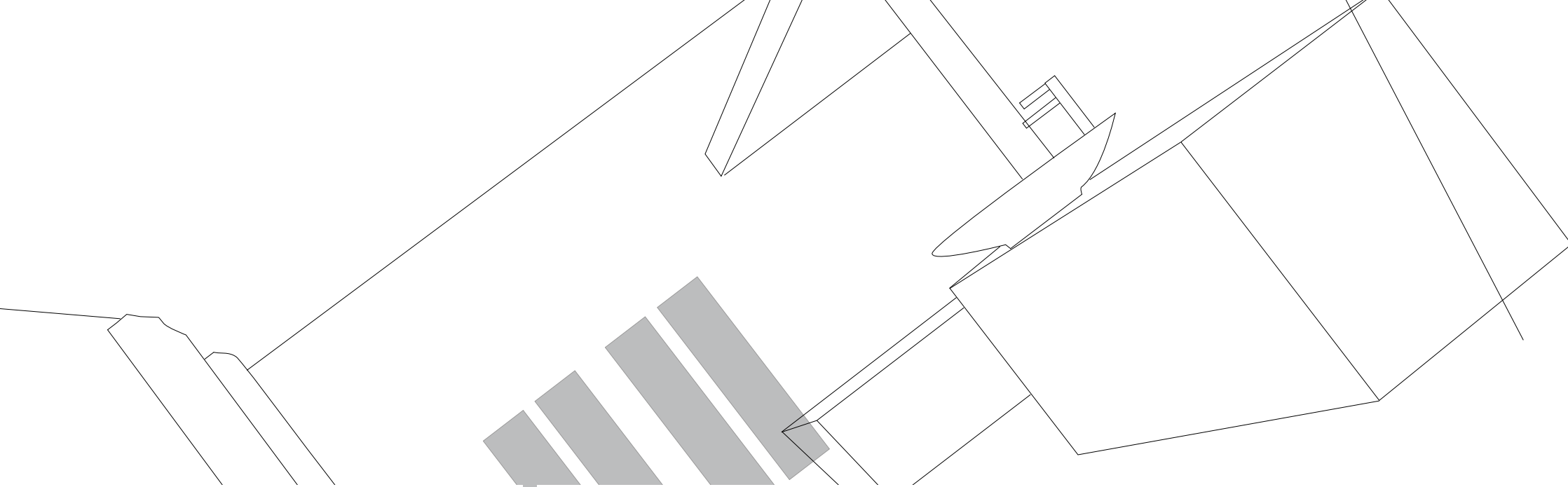


PROJECT

RIVESTIMENTI IN PASTA BIANCA RETTIFICATI
white body rectified wall tiles

★ ★ ★ ★ ★
NAXOS[®]
C E R A M I C H E
FINCIBEC GROUP



PROJECT

RIVESTIMENTO IN PASTA BIANCA RETTIFICATO
white body rectified wall tile

Dall'incontro fra la tecnologia digitale più avanzata e la natura, nasce Project, una collezione di rivestimenti in pasta bianca che unisce il fascino della pietra leccese all'eleganza del legno. Un connubio molto affascinante proposto attraverso una materia sobria e un design ricercato; un equilibrio perfetto che dona personalità a sale da bagno residenziali e wellness commerciali contemporanei. Realizzata in due formati rettificati il 32,5x97,7 e il 25x59,5, Project offre una grande versatilità nella personalizzazione degli ambienti grazie ai numerosi decori ricchi di dettagli, in grado di rispondere alle differenti esigenze del progetto più attuale.

The combination of the latest digital technology and nature led to the creation of Project, a collection of white body floor and wall tiles that brings together the appeal of the "leccese" stone with the elegance of wood. A very appealing mix offered through a classic material and a sophisticated design. A perfect balance that gives character to residential bathrooms and modern commercial spas. Available in two rectified formats, 32.5x97.7 and 25x59.5, Project offers great versatility in customising rooms thanks to its array of detailed designs that meet the various stylistic needs of contemporary projects.

Formati | **32,5x97,7** | **Bordo** | **rettificato**
 Sizes | 25x59,5 | Edge | rectified

Colori | project **light**
 Colours | project **cream**
 project **grey**
 project **sand**
 project **rovere**
 project **rovere light**
 project **dark**
 project **moka**

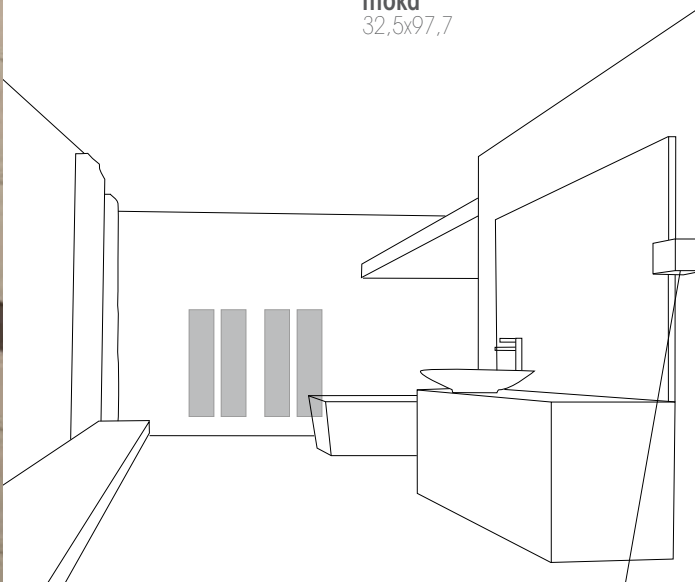




PROJECT

RIVESTIMENTO IN PASTA BIANCA RETTIFICATO
white body rectified wall tile

- Ambiente realizzato con** | Setting realized with
- project cream**
32,5x97,7
 - project moka**
32,5x97,7
 - tavella rovere**
16,2x97,7
 - fascia native gold/cream**
32,5x97,7
 - mosaico moka**
32,5x32,5
 - moka pav.**
32,5x32,5
 - fascia space rovere / moka**
32,5x97,7



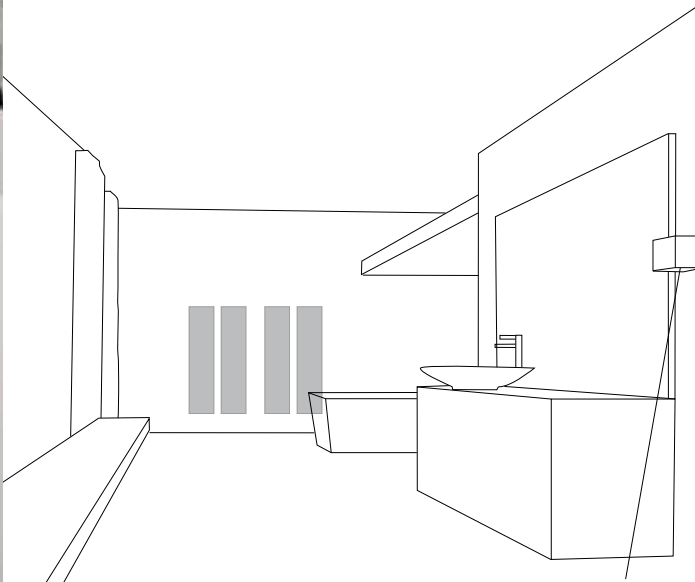


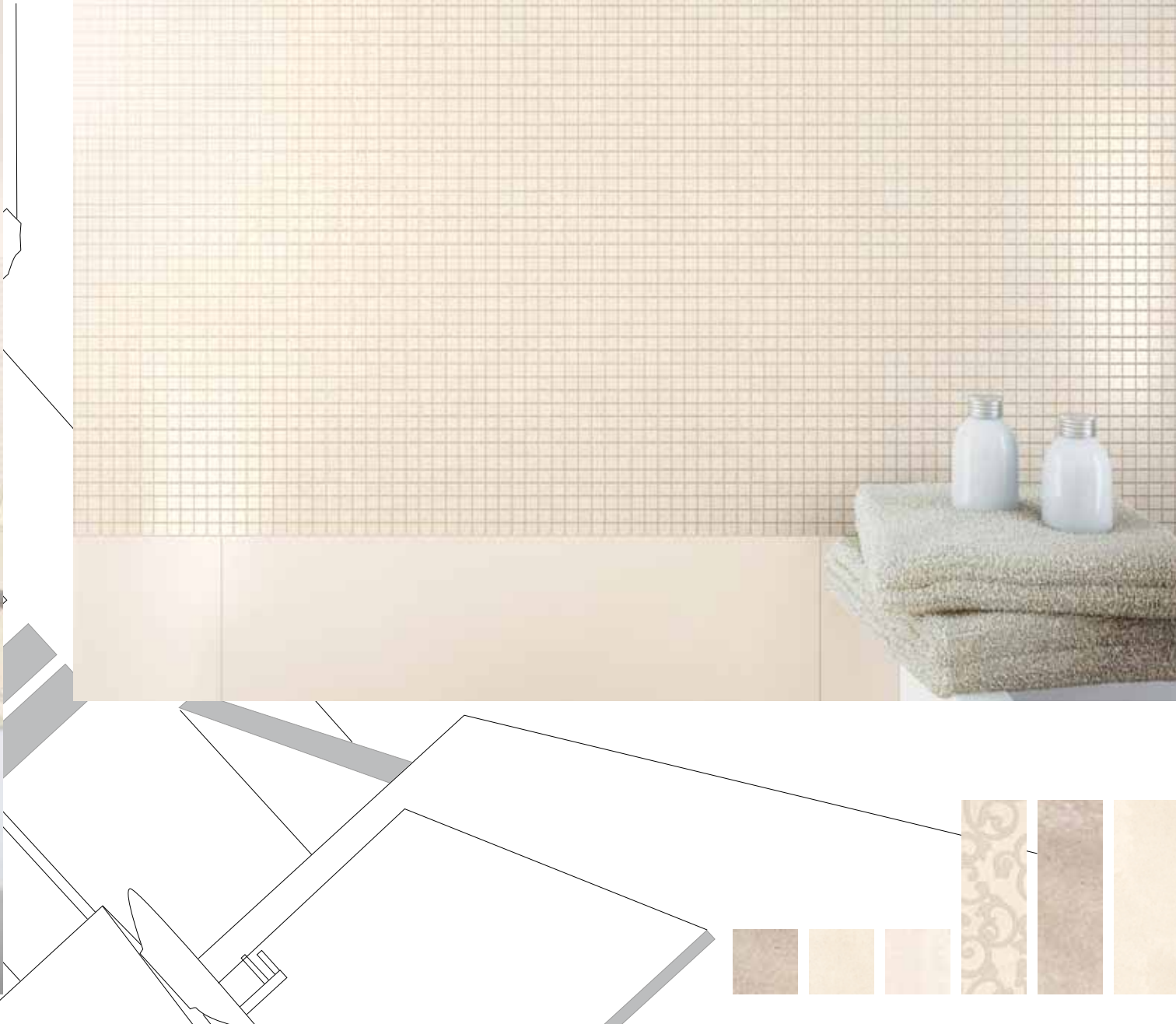


PROJECT

RIVESTIMENTO IN PASTA BIANCA RETTIFICATO
white body rectified wall tile

- Ambiente realizzato con**
Setting realized with
- project cream**
32,5x97,7
 - project sand**
32,5x97,7
 - fascia macro cream**
32,5x97,7
 - mosaico cream**
32,5x32,5
 - sand pav.**
32,5x32,5



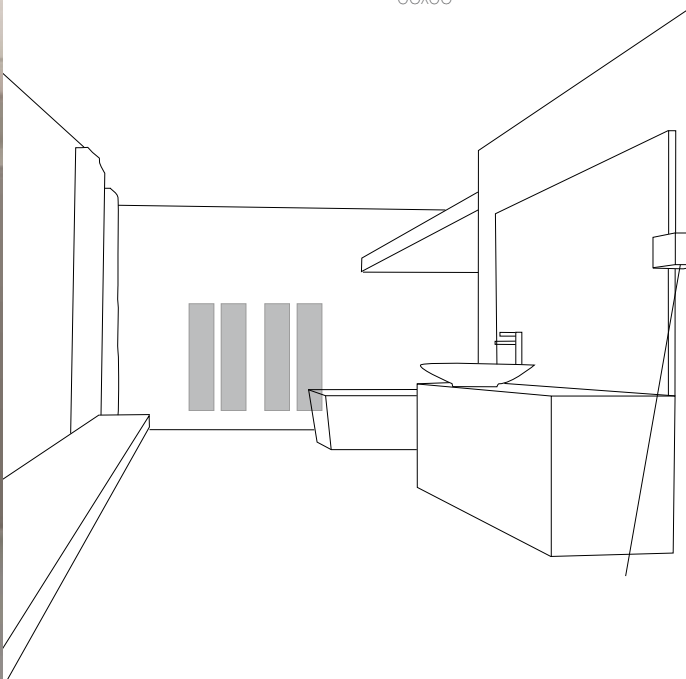


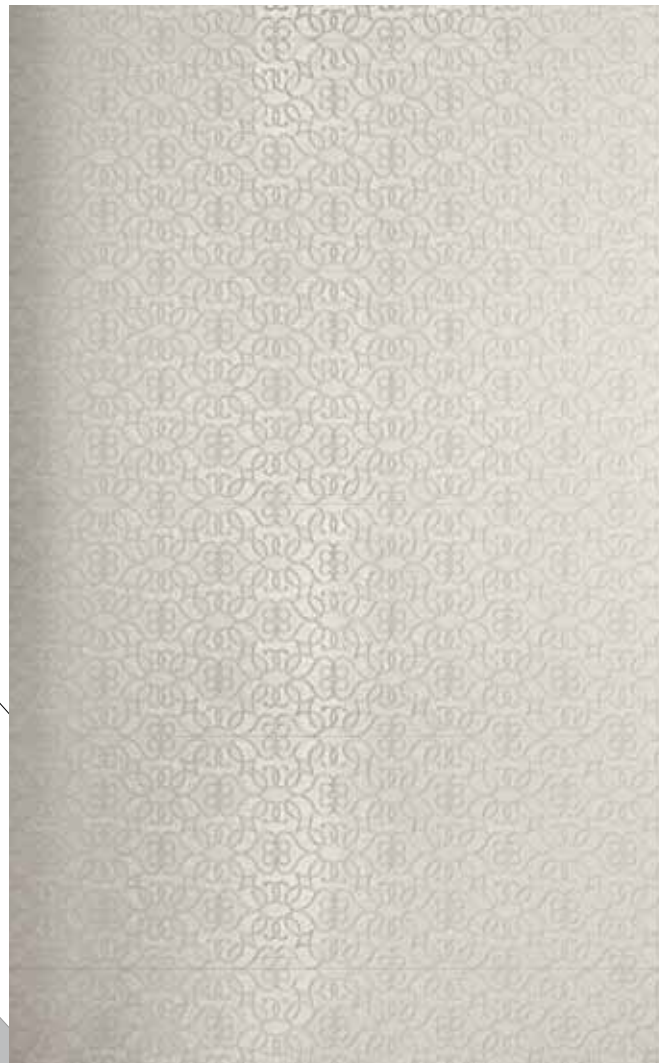
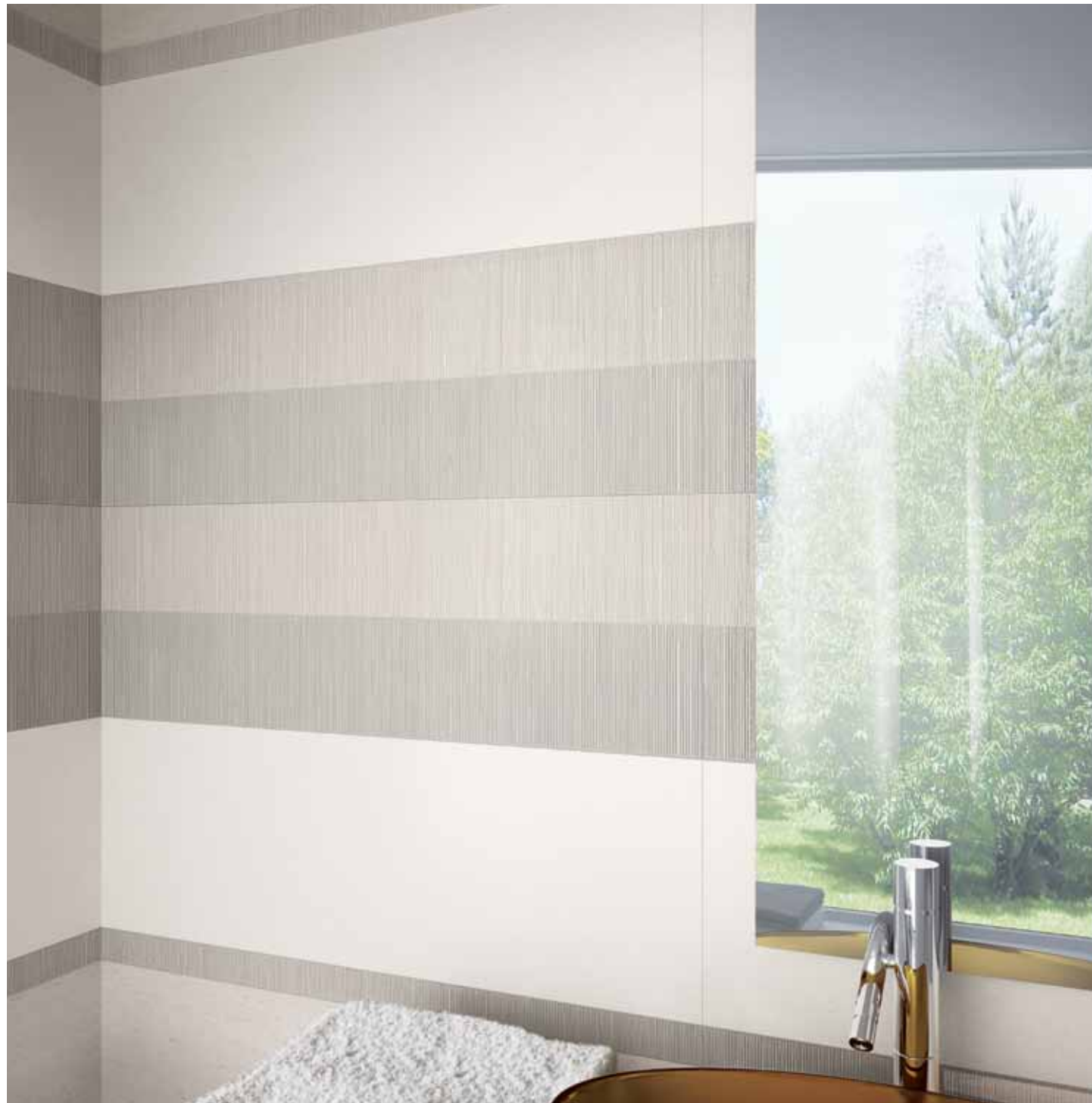


PROJECT

RIVESTIMENTO IN PASTA BIANCA RETTIFICATO
white body rectified wall tile

- Ambiente realizzato con**
Setting realized with
- project light**
32,5x97,7
 - project grey**
32,5x97,7
 - fascia fashion light**
32,5x97,7
 - fascia strip light**
32,5x97,7
 - listello strip light**
5x97,7
 - listello glitter light**
7x97,7
 - grey pav.**
60x60





14

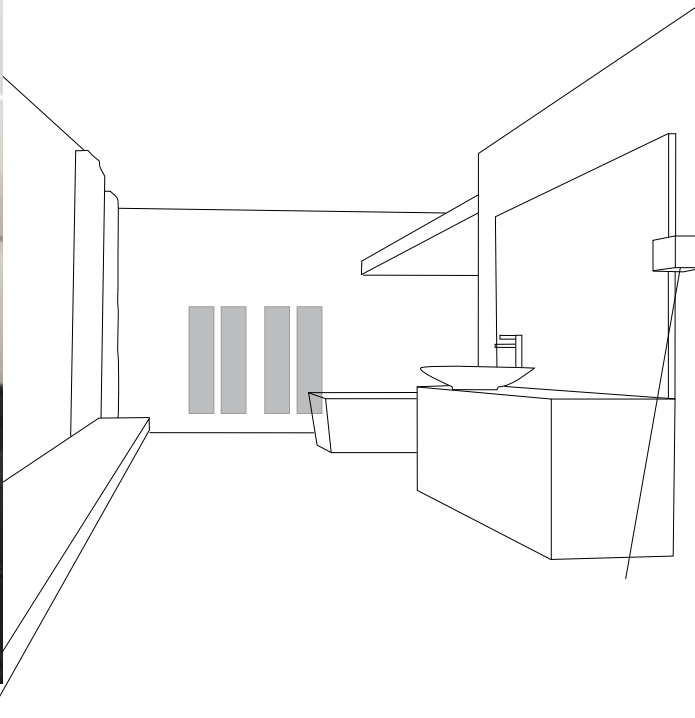
15



PROJECT

RIVESTIMENTO IN PASTA BIANCA RETTIFICATO
white body rectified wall tile

Ambiente realizzato con | **Project Light**
Setting realized with | 32,5x97,7
Fascia Space Rovere Light/Dark
32,5x97,7
Fascia Dark Acciaio
16,2x97,7
Volume A/B
32,5x32,5
Dark pav.
60x60

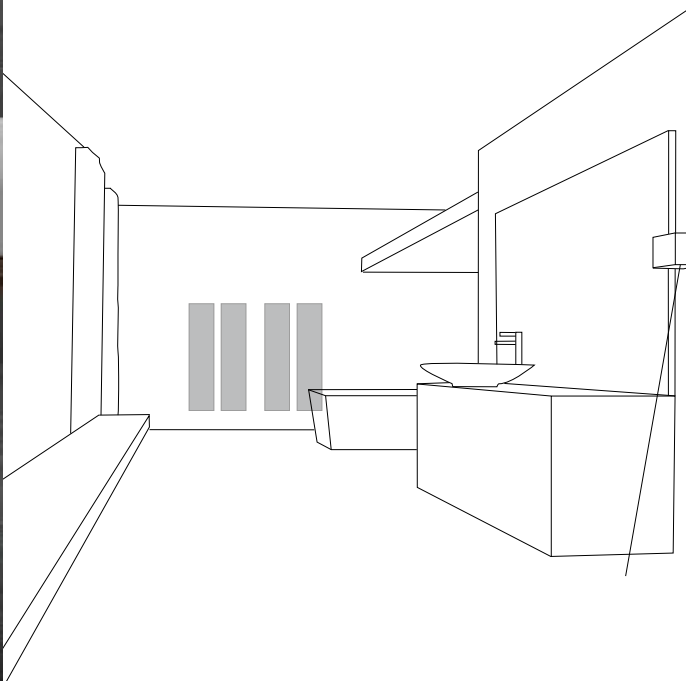


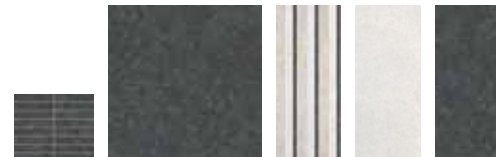


PROJECT

RIVESTIMENTO IN PASTA BIANCA RETTIFICATO
white body rectified wall tile

- Ambiente realizzato con**
Setting realized with
- project light**
25x59,5
 - project dark**
25x59,5
 - project rovere light**
25x59,5
 - mosaico dark**
25x30
 - fascia concept dark**
25x59,5
 - dark pav**
60x60



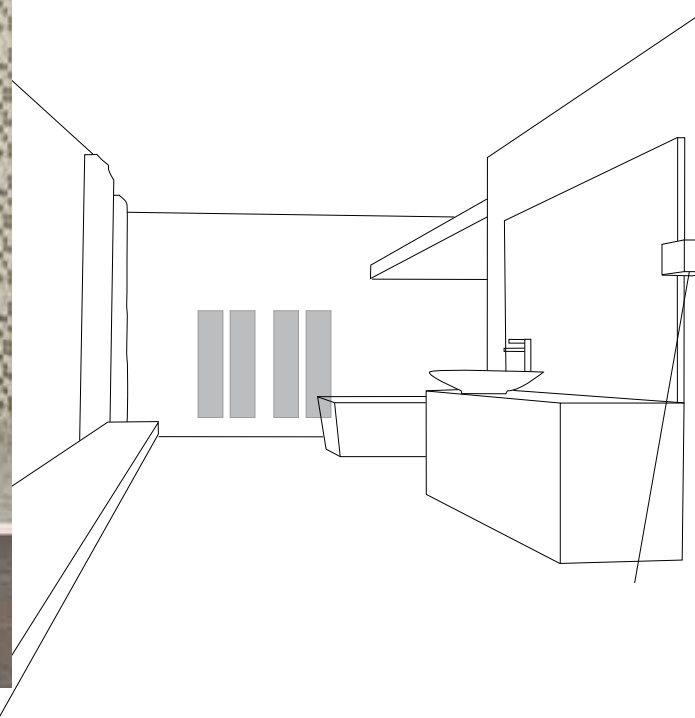


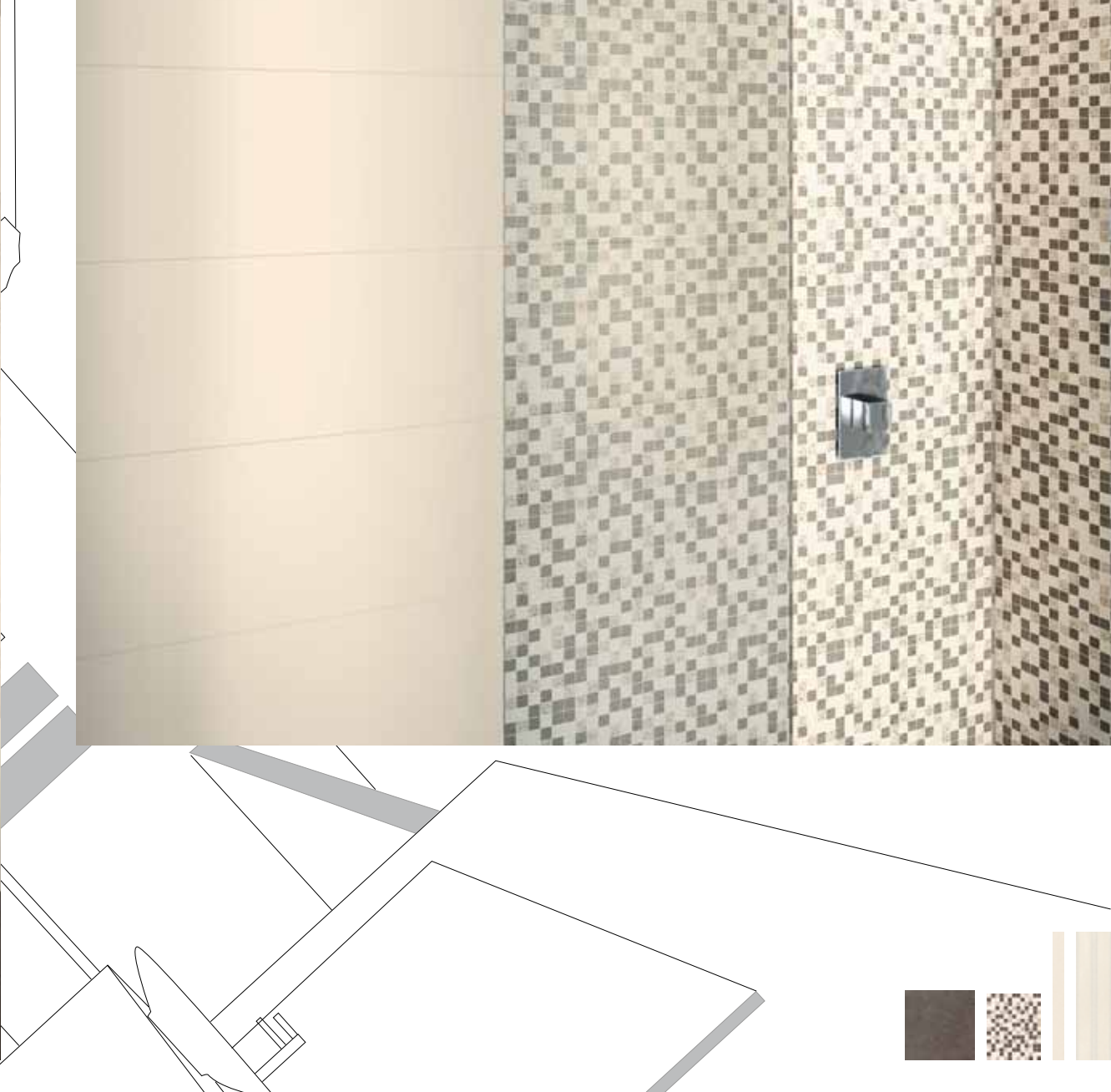


PROJECT

RIVESTIMENTO IN PASTA BIANCA RETTIFICATO
white body rectified wall tile

- Ambiente realizzato con** | **project cream**
Setting realized with | 25x59,5
- project moka**
25x59,5
 - fascia project cream**
25x59,5
 - mosaico mix project moka**
25x30
 - listello project cream**
4,5x59,5
 - moka pav.**
32,5x32,5





Project Light | 32,5x97,7



32,5x97,7
67742 Project Light ■ 175



32,5x32,5 (225 tessere)
68554 Mosaico Light ● 58



32,5x32,5
68795 Project Light Pav. ■ 109

rettificato | rectified



16,2x97,7
68578 Fascia Project Light ● 97



32,5x97,7
68569 Fascia Space Light/Dark ● 189



32,5x97,7
68560 Fascia Strip Light ● 170



5x97,7
68556 Listello Strip Light ● 49



32,5x97,7
68206 Fascia Native Light ■ 194

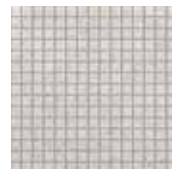


32,5x97,7
68551 Fascia Native Silver/Light ● 192

Project Grey | 32,5x97,7



32,5x97,7
67075 Project Grey ■ 175



32,5x32,5 (225 tessere)
68614 Mosaico Grey ● 58



32,5x32,5
68200 Project Grey Pav. ■ 109

rettificato | rectified

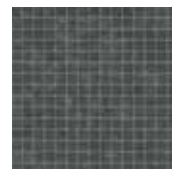


16,2x97,7
68582 Fascia Project Grey ● 97

Project Dark | 32,5x97,7



32,5x97,7
67074 Project Dark ■ 180



32,5x32,5 (225 tessere)
68615 Mosaico Dark ● 58



32,5x32,5
68202 Project Dark Pav. ■ 109



16,2x97,7
68583 Fascia Project Dark ● 97



16,2x97,7
68585 Fascia Dark Acciaio ● 151

32,5x97,7

28

PROJECT

RIVESTIMENTI IN PASTA BIANCA RETTIFICATI
white body rectified wall tiles

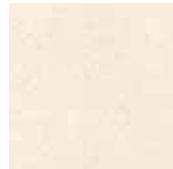
Project Cream | 32,5x97,7



32,5x97,7
67681 Project Cream ■ 175



32,5x32,5 (225 tessere)
68616 Mosaico Cream ● 58



32,5x32,5
68794 Project Cream Pav. ■ 109

rettificato | rectified



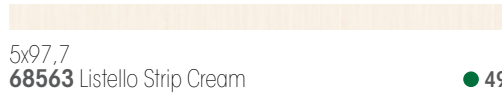
16,2x97,7
68579 Fascia Project Cream ● 97



32,5x97,7
68570 Fascia Space Cream/Moka ● 189



32,5x97,7
68561 Fascia Strip Cream ● 170



5x97,7
68563 Listello Strip Cream ● 49



32,5x97,7
68205 Fascia Native Cream ■ 194



32,5x97,7
68557 Fascia Native Gold/Cream ● 192

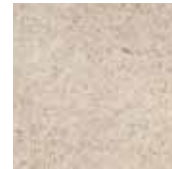
Project Sand | 32,5x97,7



32,5x97,7
67077 Project Sand ■ 175



32,5x32,5 (225 tessere)
68617 Mosaico Sand ● 58



32,5x32,5
68201 Project Sand Pav. ■ 109

Project Moka | 32,5x97,7



32,5x97,7
67076 Project Moka ■ 180



32,5x32,5 (225 tessere)
68618 Mosaico Moka ● 58



32,5x32,5
68204 Project Moka Pav. ■ 109

rettificato | rectified



16,2x97,7
68580 Fascia Project Sand ● 97



16,2x97,7
68581 Fascia Project Moka ● 97



16,2x97,7
68584 Fascia Moka/Ottone ● 151



32,5x97,7
68207 Fascia Native Moka ■ 194



32,5x97,7
68559 Fascia Native Gold/Moka ● 192

29

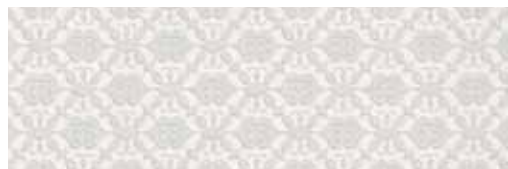
Decor | Decors



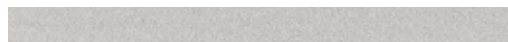
32,5x97,7
68571 Fascia Space Rovere Light/Dark ● 189



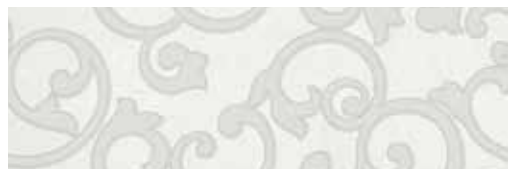
16,2x97,7
68313 Tavella Rovere Light ■ 192



32,5x97,7
68573 Fascia Fashion Light ● 197



7x97,7
68613 Listello Glitter Light ● 97



32,5x97,7
68576 Fascia Macro Light ● 197

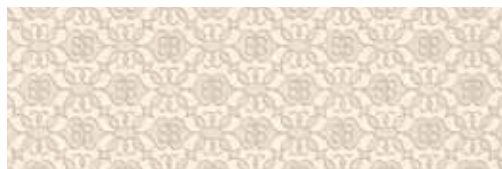
rettificato | rectified



32,5x97,7
68568 Fascia Space Rovere / Moka ● 189



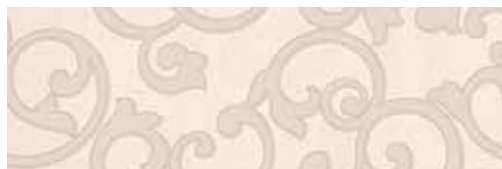
16,2x97,7
68312 Tavella Rovere ■ 192



32,5x97,7
68572 Fascia Fashion Cream ● 197



7x97,7
68610 Listello Glitter Cream ● 97



32,5x97,7
68575 Fascia Macro Cream ● 197



32,5x32,5 (26 tessere)
68620 Mosaico Rovere Light ● 47



32,5x32,5 (26 tessere)
68619 Mosaico Rovere ● 47



32,5x97,7
68574 Fascia Fashion Oro ● 210



7x97,7
68612 Listello Glitter Moka ● 97

rettificato | rectified



195,4x162,5
68555 Pannello Tree Square (10 pz) ● 270

PEZZI SPECIALI . SPECIAL PIECES



1,5x32,5
Raccordo Jolly
 ● 32

32,5x97,7

30

31

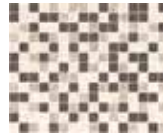
PROJECT

RIVESTIMENTI IN PASTA BIANCA RETTIFICATI
 white body rectified wall tiles

rettificato | rectified



25x59,5
68208 Project Cream ■ 115



25x30 (208 tessere)
68549 Mosaico Mix Project Moka ● 58



25x59,5
68210 Project Sand ■ 115



25x30 (16 tessere)
68547 Mosaico Sand ● 33



25x59,5
68214 Project Moka ■ 124



25x30 (16 tessere)
68544 Mosaico Moka ● 33



25x59,5
68211 Project Rovere ■ 115



25x30 (16 tessere)
73633 Mosaico Rovere ● 33



25x59,5
68471 Fascia Project Cream ● 117



25x59,5
68215 Fascia Native Cream ■ 160



25x59,5
68516 Fascia Concept Moka ● 55



8x59,5
68513 Listello Strip Cream ● 57



4,5x59,5
73730 Listello Project Cream ● 52

rettificato | rectified



25x59,5
68171 Project Light ■ 115



25x30 (208 tessere)
68548 Mosaico Mix Project Dark ● 58



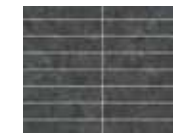
25x59,5
68209 Project Grey ■ 115



25x30 (16 tessere)
73634 Mosaico Grey ● 33



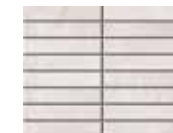
25x59,5
68213 Project Dark ■ 124



25x30 (16 tessere)
73632 Mosaico Dark ● 33



25x59,5
68212 Project Rovere Light ■ 115



25x30 (16 tessere)
68540 Mosaico Rovere Light ● 33



25x59,5
68512 Fascia Project Grey ● 117



25x59,5
68216 Fascia Native Light ■ 160



25x59,5
68515 Fascia Concept Dark ● 55



8x59,5
68514 Listello Strip Grey ● 57

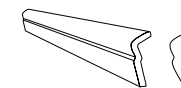


4,5x59,5
73731 Listello Project Grey ● 52

PEZZI SPECIALI . SPECIAL PIECES



1,5x25
Raccordo Jolly ● 25



4x59,5
Cornice Lavoro ● 57



4x1,5
Spigolo Cornice Lavoro ● 43

Gres Fine Porcellanato

Fine Porcelain Stoneware



60x60 rettificato
68187 Project Light Pavimento
■ 129



60x60 rettificato
68188 Project Cream Pavimento
■ 129



60x60 rettificato
68184 Project Sand Pavimento
■ 129



60x60 rettificato
68186 Project Moka Pavimento
■ 129

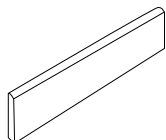


60x60 rettificato
68185 Project Dark Pavimento
■ 129



60x60 rettificato
68183 Project Grey Pavimento
■ 129

PEZZI SPECIALI . SPECIAL PIECES



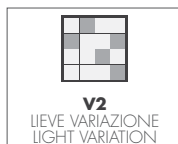
7,2x60
Battiscopa ● 17



45x45
64236 Project Dark Pavimento
■ 77



45x45
64245 Project Grey Pavimento
■ 77



Gres Fine Porcellanato | Fine Porcelain Stoneware

	Caratteristiche tecniche Technical data Caractéristiques techniques Technische Daten Características técnicas	Tipo di prova Standard of test Norme du test Testnorm Tipo de prueba	Valore naxos naxos standards Valeur naxos Ergebnis naxos Valor de naxos
	Dimensioni Sizes Dimensions Abmessungen Dimensiones	ISO 10545.2	A norma According to norm Selon la norme Nach Norm Conforme
	Assorbimento d'acqua Water absorption Absorption d'eau Wasseraufnahme Absorción del agua	ISO 10545.3	≤ 0,5%
	Resistenza a flessione Breaking strength Resistance a la flexion Biegefestigkeit Resistencia a la flexión	ISO 10545.4	≥ 35 N/mm ²
	Resistenza agli shock termici Resistance to thermal shock Resistance aux chocs thermique Temperaturwechselbeständigkeit Resistencia a los cambios térmicos	ISO 10545.9	Garantita Guaranteed Garantie Garantiert Garantizada
	Resistenza al gelo Frost resistance Resistance au gel Frostbeständigkeit Resistencia a la helada	ISO 10545.12	Garantita Guaranteed Garantie Garantiert Garantizada
	Coefficiente di dilatazione termica lineare Thermal expansion coefficient Coefficient de dilatation thermique lineare Wärmeausdehnungskoeffizient Coeficiente de dilatación termica linear	ISO 10545.8	A norma According to norm Selon la norme Nach Norm Conforme
	Resistenza all'attacco chimico Chemical resistance Resistance chimique Beständigkeit gegen chemicalien Resistencia al ataque químico	ISO 10545.13	A norma According to norm Selon la norme Nach Norm Conforme
	Resistenza alle macchie Stains resistance Resistance aux taches Fleckenbeständigkeit Resistencia a las manchas	ISO 10545.14	A norma According to norm Selon la norme Nach Norm Conforme

CATEGORIE D'IMPIEGO USE CLASSES

- C1** Piastrelle da pavimento consigliate per traffico leggero
 Floor tiles recommended for light traffic
- C2** Piastrelle da pavimento consigliate per traffico medio-leggero
 Floor tiles recommended for medium-light traffic
- C3** Piastrelle da pavimento consigliate per traffico medio
 Floor tiles recommended for medium traffic
 Carreaux de sol conseillés pour trafic moyen
- C4** Piastrelle da pavimento consigliate per traffico medio-pesante
 Floor tiles recommended for medium-heavy traffic
- C5** Piastrelle da pavimento consigliate per impieghi con forti sollecitazioni
 Floor tiles recommended for highly stressed uses

VARIAZIONI CROMATICHE COLOUR VARIATIONS

- V1 Aspetto uniforme**
 Even appearance
- V2 Lieve variazione**
 Light variation
- V3 Media variazione**
 Medium variation
- V4 Intensa variazione**
 Strong variation

LE TONALITÀ DEI COLORI RIPORTATE NEL CATALOGO SONO INDICATIVE
 the colours shades, reported on the catalogue, are indicative

Escluso pezzi speciali ed elementi decorativi - With the exception of special pieces and decors

★ ★ ★ ★ ★
NAXOS[®]
C E R A M I C H E
FINCIBEC GROUP



FINCIBEC S.P.A

Uffici Comm.li, Stabilimento:

Strada Statale 569, 169
41014 Solignano (MO) Italy

Magazzino:

Strada Statale 569, 187
41014 Solignano (MO) Italy
Tel. +39 059.748811
Fax +39 059.797376
www.naxos-ceramica.it
info@naxos-ceramica.it

Amministrazione:

Via Valle D'Aosta, 47
41049 Sassuolo (MO) Italy
Tel. +39 0536.861300
Fax +39 0536.861351
www.fincibec.it
info@fincibec.it

GRUPPO FIRE - Fire S.r.l

