

PUZZLE

design Edward Barber & Jay Osgerby

colours

sizes

technical features

packing

MU
TIN
A[®]

THE COLLECTION

Puzzle é un'originale composizione di geometrie e colori che rende i pattern protagonisti. Qualunque sia la disposizione, il disegno che ne deriva risulta sempre interessante e unico, dando vita a infinite combinazioni ogni volta nuove. È realizzata in 25·25 cm, un unico formato ormai inusuale nel mondo della ceramica, con uno spessore importante, 14 mm, per dare maggior valore al manufatto.

Le otto famiglie cromatiche di Puzzle sono composte da:

6 PATTERN GRAFICI composti da 3 colori

3 FONDI A TINTA UNITA in 3 colori diversi

2 PATTERN EDGE speculari composti da 2 colori

Puzzle is an original composition of colour and geometry in which patterns are at the forefront. No matter how you arrange Puzzle, the resulting design will always be interesting and unique, creating infinite combinations that are new every time.

The tiles measure 25 x 25 cm, a single format that is now somewhat unusual in the ceramics world, and are quite thick at 14 mm to give greater value to the piece.

There are eight colour families, each one are composed of:

A SET OF 6 GRAPHIC PATTERNS in 3 colours

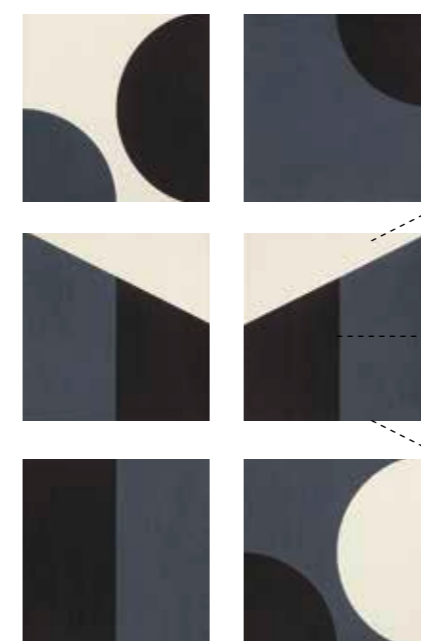
3 PLAIN TILES in 3 different colours

A SET OF 2 SYMMETRICAL EDGE PATTERNS in two colours

SET OF PATTERN

6 pattern grafici

6 graphic patterns

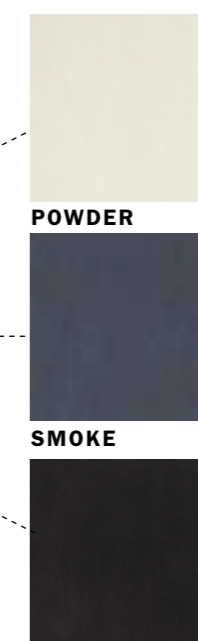


ANGLESEY

FONDI - PLAIN TILES

3 fondi tinta unita in 3
differenti colori

3 plain tiles in 3
different colours



POWDER

SMOKE

COAL

EDGE

2 patterns Edge speculari

2 symmetrical Edge patterns



EDGE SMOKE

PUZZLE COLOUR FAMILIES



FAROE



POWDER



MINERAL



STONE



EDGE MINERAL



GOTLAND



POWDER



CLAY



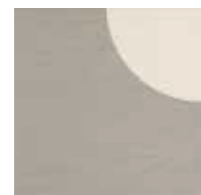
STEEL



EDGE STEEL



ALAND



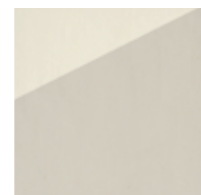
POWDER



STONE



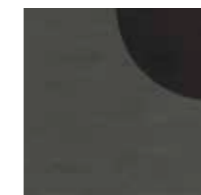
ASH



EDGE STONE



SKYE



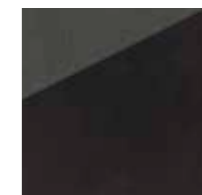
STEEL



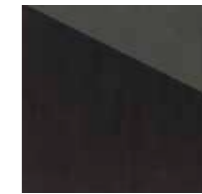
SLATE



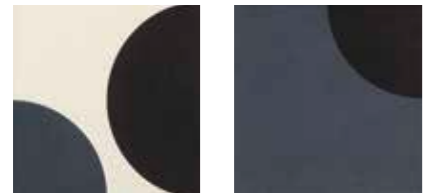
COAL



EDGE SLATE



PUZZLE COLOUR FAMILIES



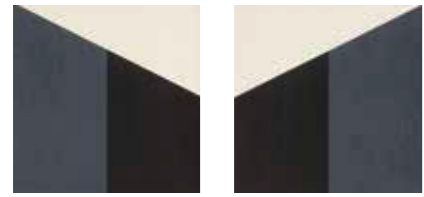
POWDER



SMOKE



EDGE SMOKE



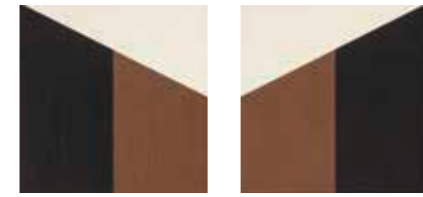
ANGLESEY



COAL



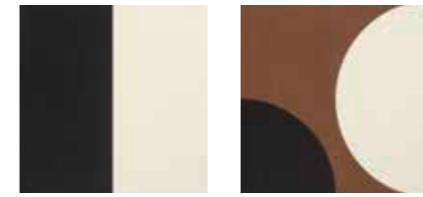
POWDER



BRICK



EDGE COAL



COAL

CRETA



POWDER



CERULEAN



EDGE CERULEAN



MILOS



COAL



POWDER



OLIVE



EDGE OLIVE



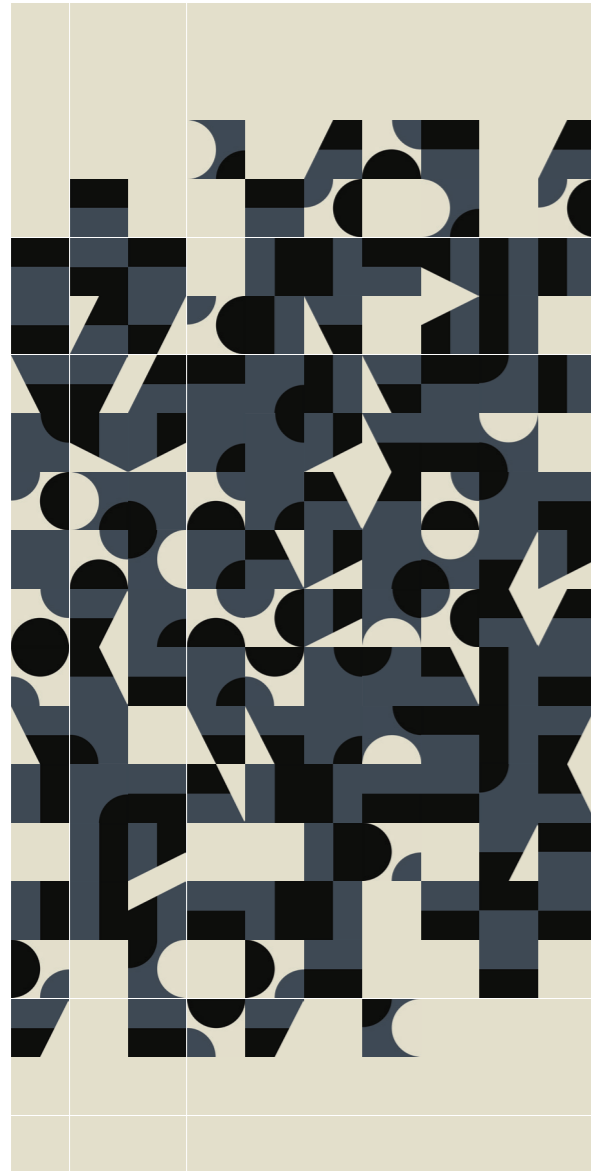
FRAGOLA

MURANO

PATTERN LAYOUTS

Puzzle dà la possibilità di creare combinazioni che vedono protagonisti gli elementi pattern grafici, pattern edge ed i fondi con diverse possibilità di posa. Qui sotto qualche esempio proposto nel colore Anglesey, ma che può essere declinato in tutte le 8 famiglie di colore.

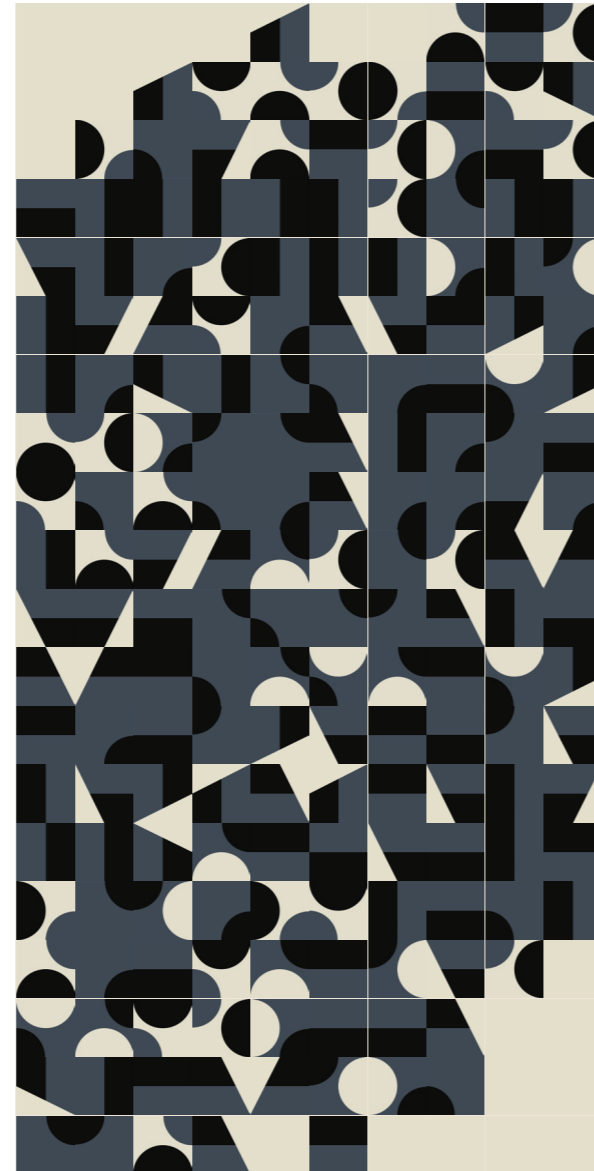
Puzzle enables to create combinations that feature graphic pattern elements, edge elements and solid backgrounds with multiple options of installation. Find following few examples in Anglesey colour, that can be used for all of the 8 families of colour.



PUZZLE / Schema 1

POSA RANDOM SFUMATA CON UN FONDO TINTA UNITA

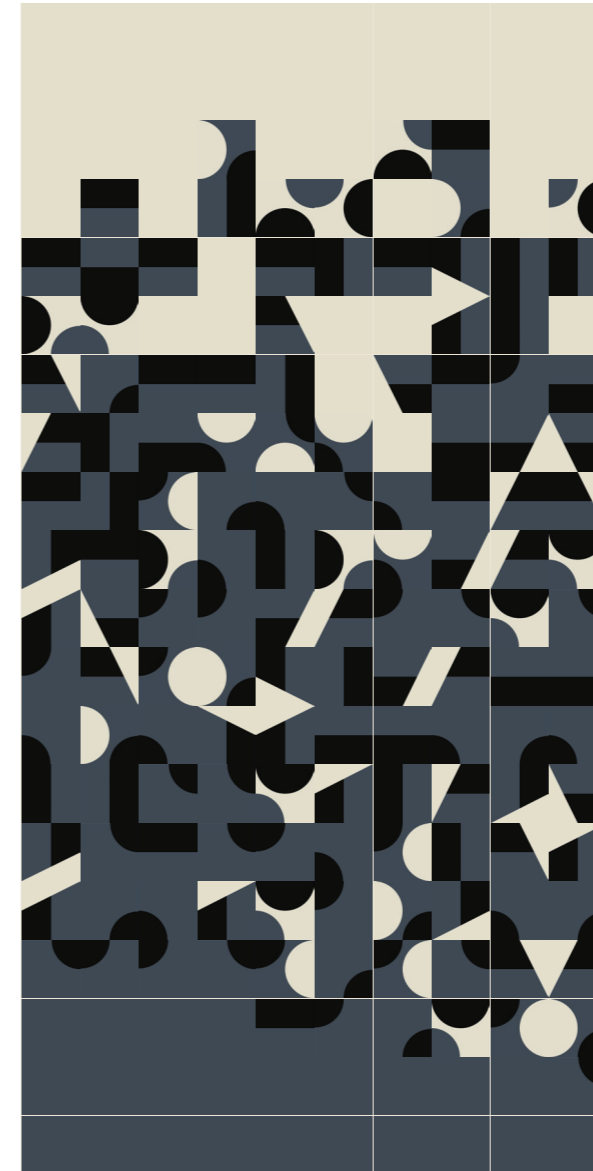
Random shaded installation on one solid background



PUZZLE / Schema 2

POSA RANDOM SFUMATA IN DIAGONALE CON UN FONDO TINTA UNITA

Random diagonally shaded installation on one solid background



PUZZLE / Schema 3

POSA RANDOM SFUMATA CON DUE FONDI TINTA UNITA

Random shaded installation on two solid backgrounds

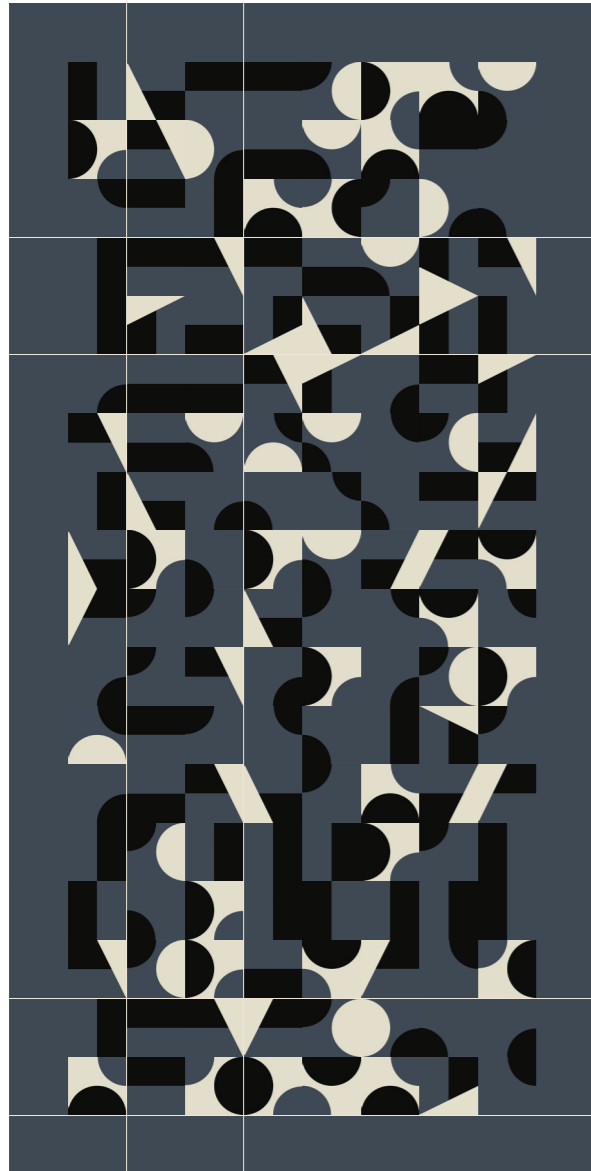


PUZZLE / Schema 4

SOLO PATTERN IN POSA RANDOM

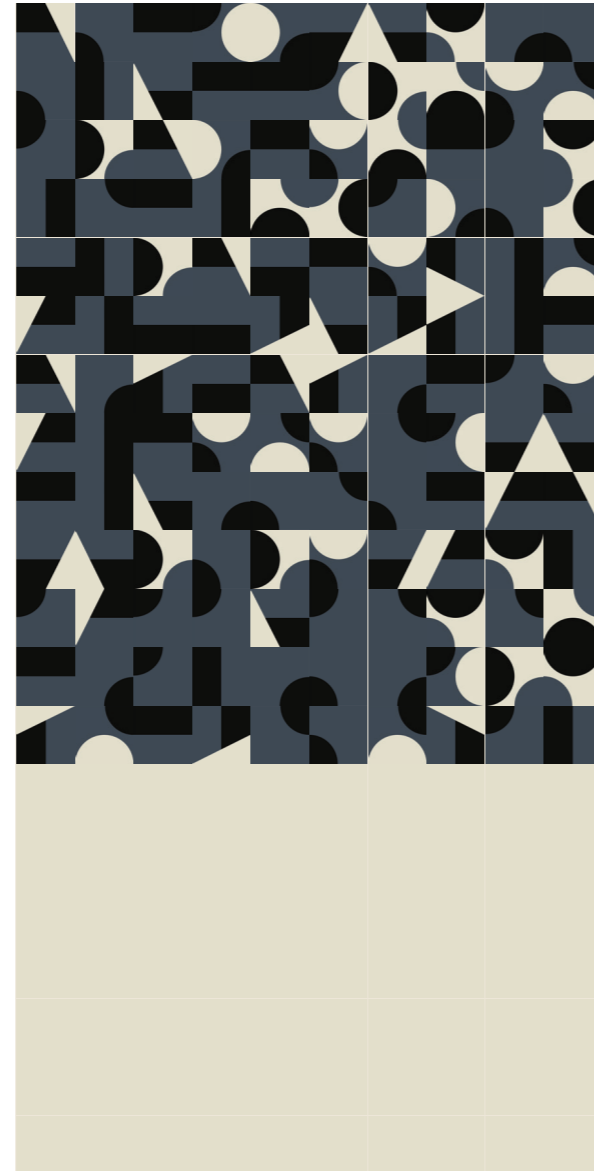
Full random pattern installation

PATTERN LAYOUTS



PUZZLE / Schema 5

POSA RANDOM CON UN FONDO TINTA UNITA COME CORNICE
Random shaded installation framed by one solid background



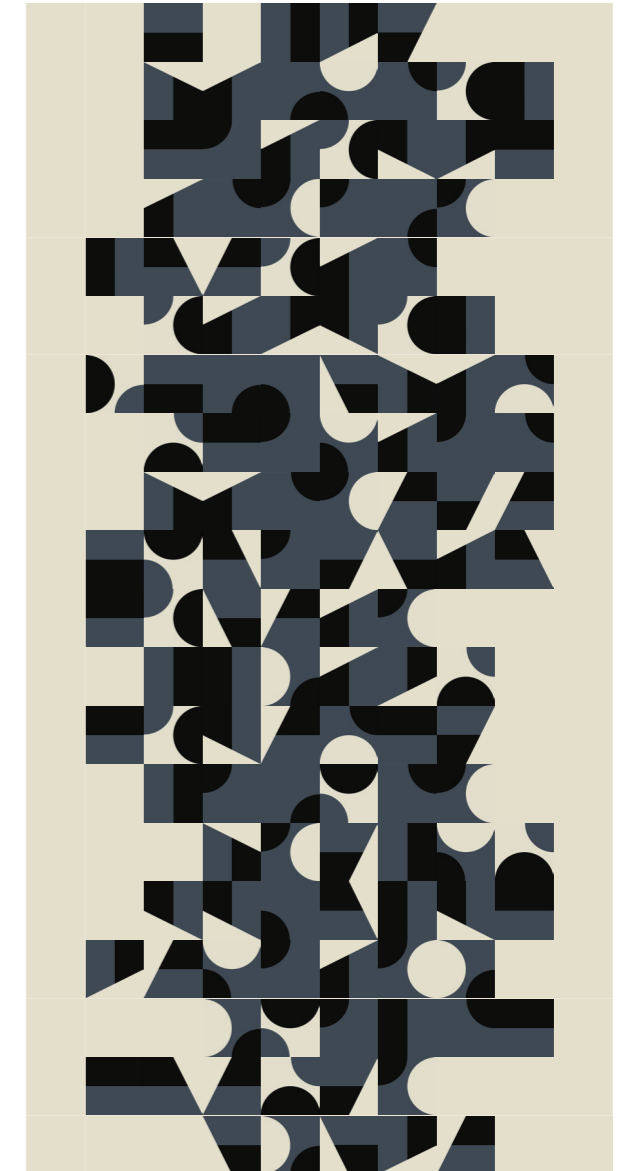
PUZZLE / Schema 6

POSA RANDOM AFFIANCATA DA UN FONDO TINTA UNITA
Random shaded installation flanked by one solid background



PUZZLE / Schema 7

**FONDO TINTA UNITA CON CORNICE DI PATTERN
IN POSA RANDOM**
Solid background framed by random pattern installation



PUZZLE / Schema 8

**PATTERN IN POSA RANDOM CON UN FONDO TINTA
UNITA COME CORNICE**
Random pattern framed by solid background installation

EDGE LAYOUTS



PUZZLE / Schema 9

POSA SFUMATA CON DUE FONDI TINTA UNITA
Shaded installation on two solid background



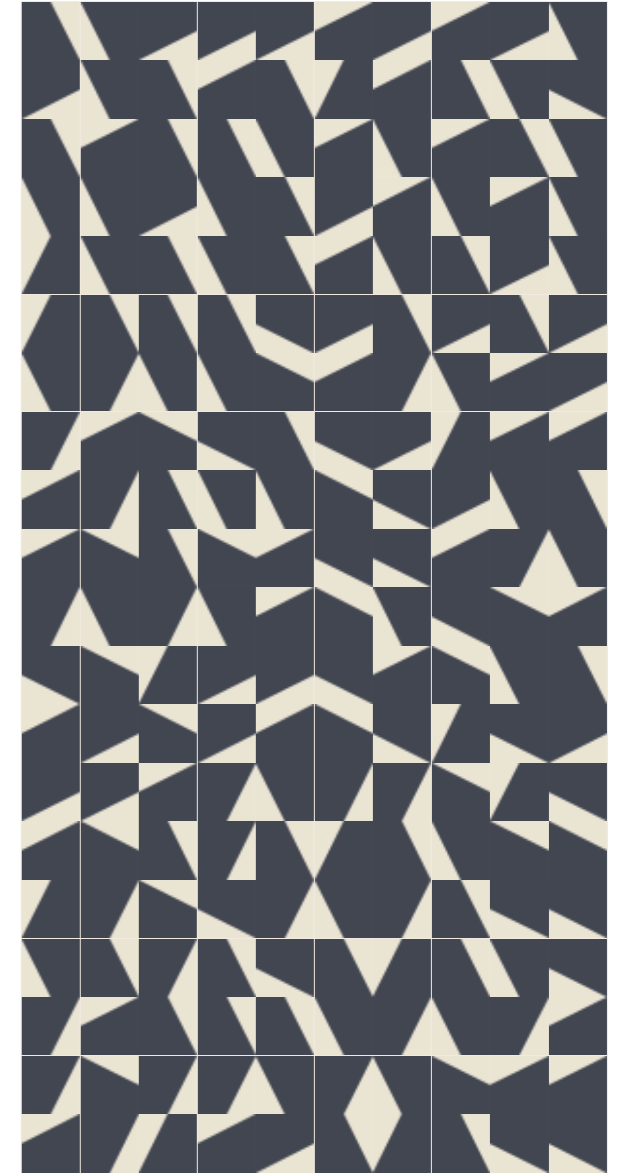
PUZZLE / Schema 10

POSA SFUMATA CON UN FONDO TINTA UNITA
Shaded installation on one solid background



PUZZLE / Schema 11

POSA RANDOM CON ORIENTAMENTO VERTICALE
Vertically oriented random installation



PUZZLE / Schema 12

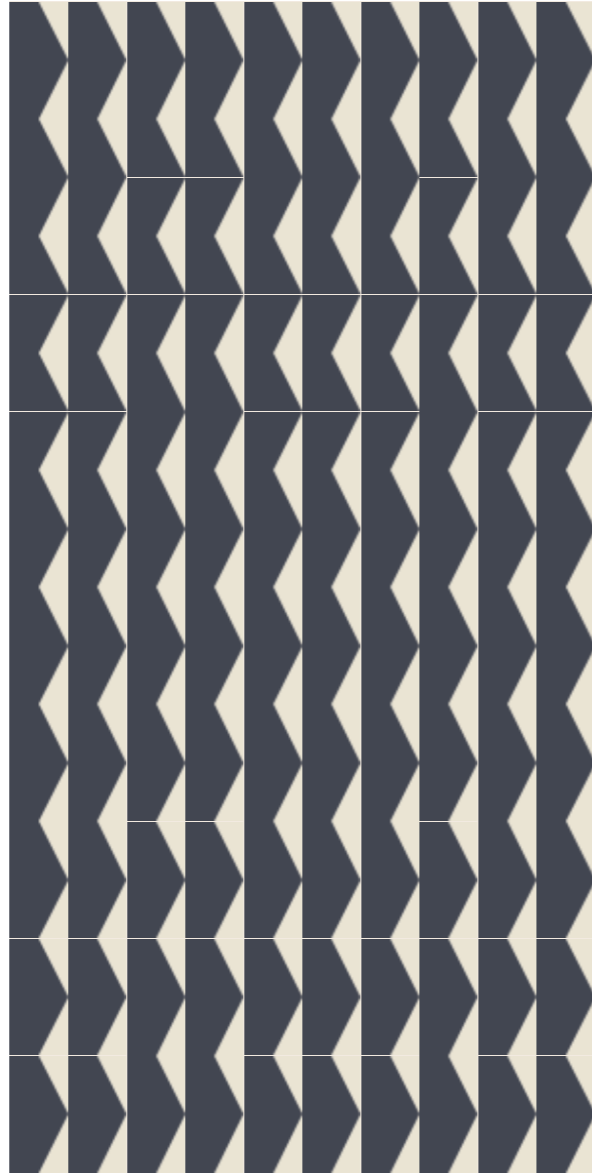
POSA RANDOM
Random installation

EDGE LAYOUTS



PUZZLE / Schema 13

POSA ORDINATA A
Well-ordered installation A



PUZZLE / Schema 14

POSA ORDINATA B
Well-ordered installation B



PUZZLE / Schema 15

POSA ORDINATA C
Well-ordered installation C



PUZZLE / Schema 16

POSA ORDINATA D
Well-ordered installation D

PUZZLE

Modello depositato n° 003065440 – data di deposito: 12/04/2016
Registered design n° 003065440 – date of registration: 12/04/2016

production industrial

material gres porcellanato smaltato ad impasto omogeneo
glazed homogeneous porcelain stoneware

sizes *25·25 cm - 10”·10”

thickness 14 mm

complementary pieces battiscopa *12,5·25 cm - skirting 5”·10”

*misure nominali - nominal sizes

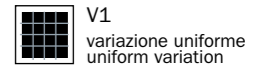
PUZZLE / technical features

UNI EN14411:2012 App. GL. (Bla Group)

norma standard	caratteristiche features	valore prescritto value required	PUZZLE
ISO 10545/3	assorbimento d'acqua water absorption	<0,5%	0,06%
ASTM C373		<0,5%	0,06%
EN 101	durezza superficiale (scala mohs) surface hardness (scala mohs)	≥ 5	5
ISO 10545/9	resistenza agli sbalzi termici resistance to thermal shock	nessuna alterazione visibile no visible alteration	resiste resistant
ISO 10545/12	resistenza al gelo frost resistance	nessuna alterazione visibile no visible alteration	resiste resistant
ASTM C1026		unaffected	unaffected
ISO 10545/13	resistenza agli attacchi chimici resistance to chemical attacks	nessuna alterazione visibile no visible alteration	resiste resistant
ASTM C650			unaffected
ISO 10545/4	sforzo di rottura (N) breaking strength (N)	Sp≥ 7,5 min 1300	resiste resistant
	Classificazione carico di rottura breaking strenght classification		U4 (carichi pesanti) U4 (heavy weights)
DIN 51130 - 04		valori medi 6° ÷ 10° 10° ÷ 19° 19° ÷ 27° 27° ÷ 35° > 35°	R9 R10 R11 R12 R13 R10
DCDF		> 0,42	0,68
LEED CERTIFICATION 4.1			20% recycled material

PUZZLE / packing

articolo item	pz-mq pcs-sqm	pz-scat. pcs-box	mq-scat. sqm-box	scat.-pal. box-pal.	kg-scat. kg-box	kg-pal. kg-pal.	mq-pal sqms-pal
25-25	16	12	0,75	60	23,50	1410,00	45,00
set of 6 patterns 25-25	16	12	0,75	60	23,50	1410,00	45,00
edge 25-25	16	12	0,75	60	23,50	1410,00	45,00
battiscopa 12,5-25	-	10	2,5 ml	-	9,80	-	-



MUTINA.IT

Follow us on

