

Shape —



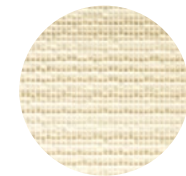
30 x 60 Rect
[29,5 x 59,2 x 0,90 cm]



Shape Marfim



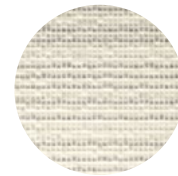
Shape Alloy



Shape Mix Craft



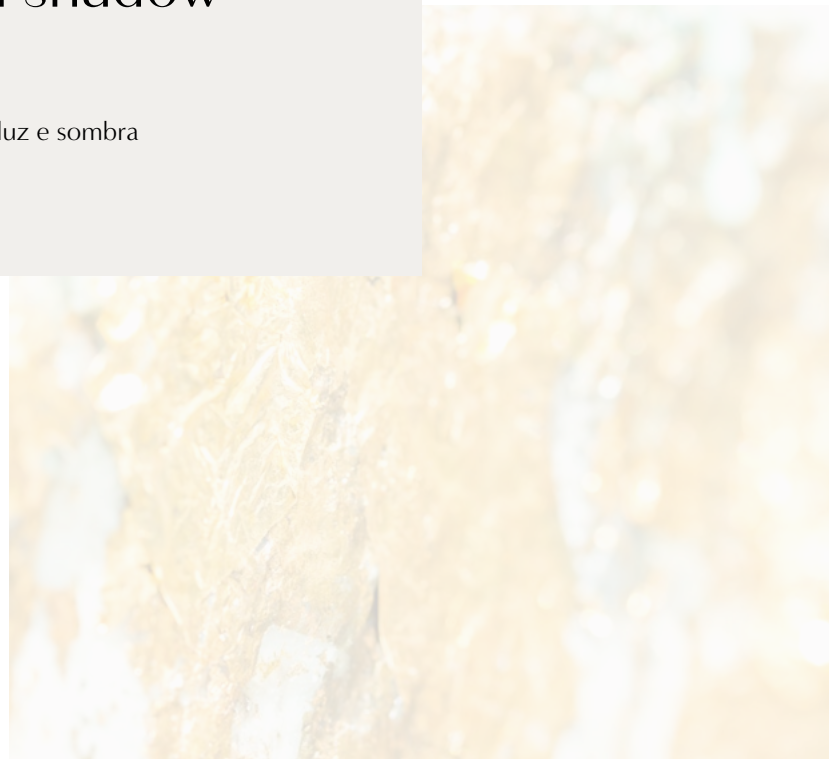
Shape Smog



Shape Mix Gris

gentle movements
of light and shadow

movimentos discretos de luz e sombra





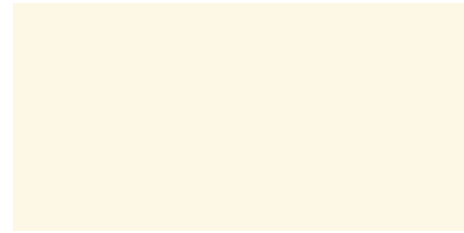
Shape —



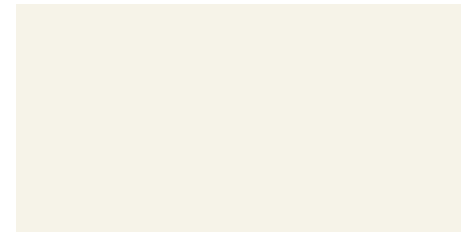
Shape Mix Craft



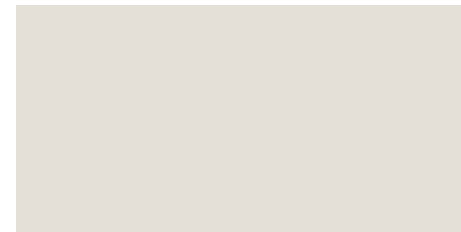
Shape —



Marfim Mate
30 x 60 RECT — [29,5 x 59,2 x 0,90 cm] — P75



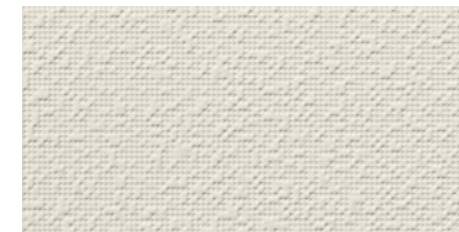
Alloy Mate
30 x 60 RECT — [29,5 x 59,2 x 0,90 cm] — P75



Smog Mate
30 x 60 RECT — [29,5 x 59,2 x 0,90 cm] — P75



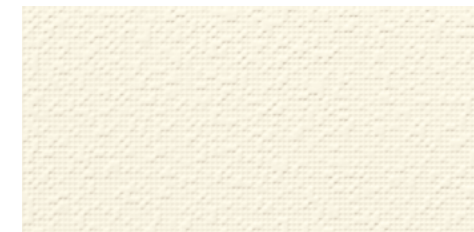
Shape Alloy (*)
30 x 60 RECT — [29,5 x 59,2 x 0,90 cm] — P80



Shape Smog (*)
30 x 60 RECT — [29,5 x 59,2 x 0,90 cm] — P80



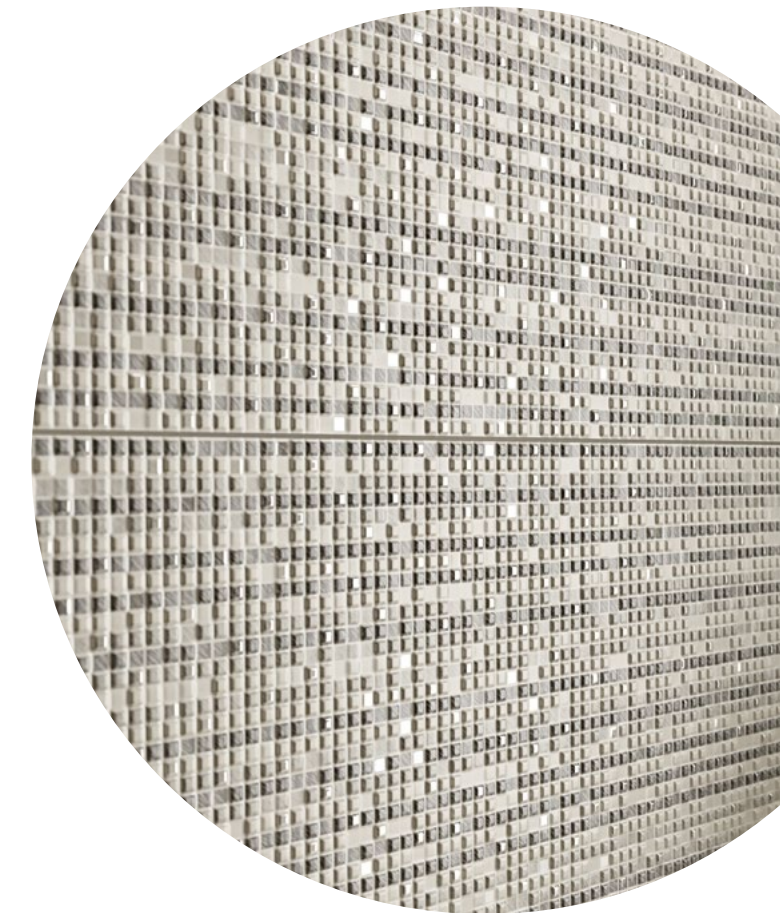
Shape Mix Gris (*)
30 x 60 RECT — [29,5 x 59,2 x 0,90 cm] — P80



Shape Marfim (*)
30 x 60 RECT — [29,5 x 59,2 x 0,90 cm] — P80



Shape Mix Craft (*)
30 x 60 RECT — [29,5 x 59,2 x 0,90 cm] — P80



Shape Mix Gris . Shape Smog . Smog Mate



(*) Dado o efeito deste produto, as peças devem ser aplicadas sempre no mesmo sentido, seguindo a orientação do tardo.
(*) Given the effect of the product, tiles must always be laid out facing same direction, following the orientation of the back.