



SHARD

★★★★★
NAXOS[®]
CERAMICHE
FINCIBEC GROUP

SHARD



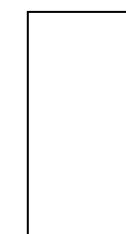
La materia ceramica industriale riscopre la tradizione artigianale dei Paesi del Mediterraneo e si trasforma in una proposta da rivestimento originale ed elegante. Shard è la nuova collezione di Naxos in cui il contrasto di superfici lucide e opache rappresenta nel contempo il tratto distintivo della serie e una sofisticata soluzione decorativa.

Industrial ceramic material rediscovers the artisan tradition of Mediterranean countries and transforms itself into an original and elegant coating. Shard is the new Naxos collection in which the contrast between gloss and matte surfaces is simultaneously the hallmark of the series and a sophisticated decorative solution.

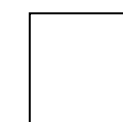
★★★★★
NAXOS[®]
FINCIBEC GROUP

2

formati / sizes :



32,5x65
12,8"x25,6"



32,5x32,5
12,8"x12,8"

1

bordo / edge :
RETTIFICATO
RECTIFIED

5

colori / colours :



White



Black



Grey



Ivory




Willow



C GREY

Ambiente realizzato con:
Setting realized with:

Square Grey 32,5x32,5
Check Grey 32,5x32,5
Up Check Platinum 32,5x32,5
Shard Grey pav. lev. 32,5x32,5

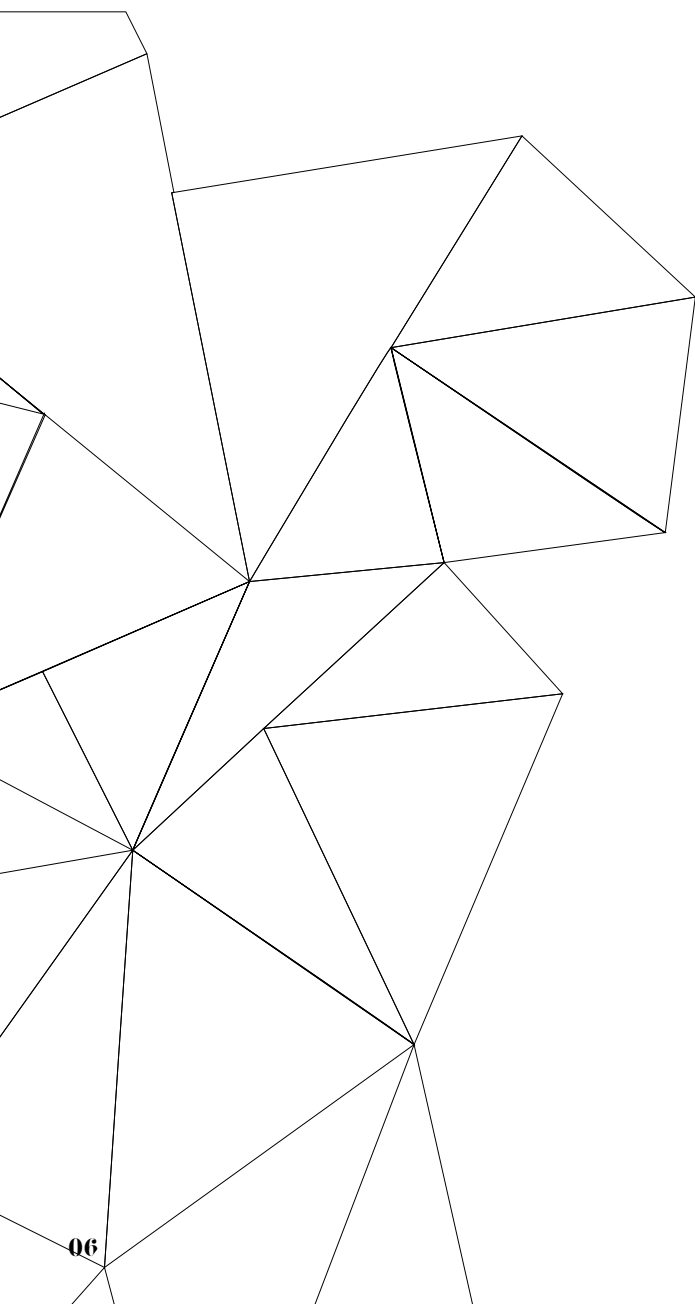


Ambiente realizzato con:
Setting realized with:
Check Grey 32,5x32,5
Up Check Platinum 32,5x32,5
Shard Grey pav. lev. 32,5x32,5

GREY

Ambiente realizzato con:
Setting realized with:

Check Grey 32,5x32,5



I VORY

Ambiente realizzato con:

Setting realized with:

Square Ivory 32,5x32,5

Check Ivory 32,5x32,5

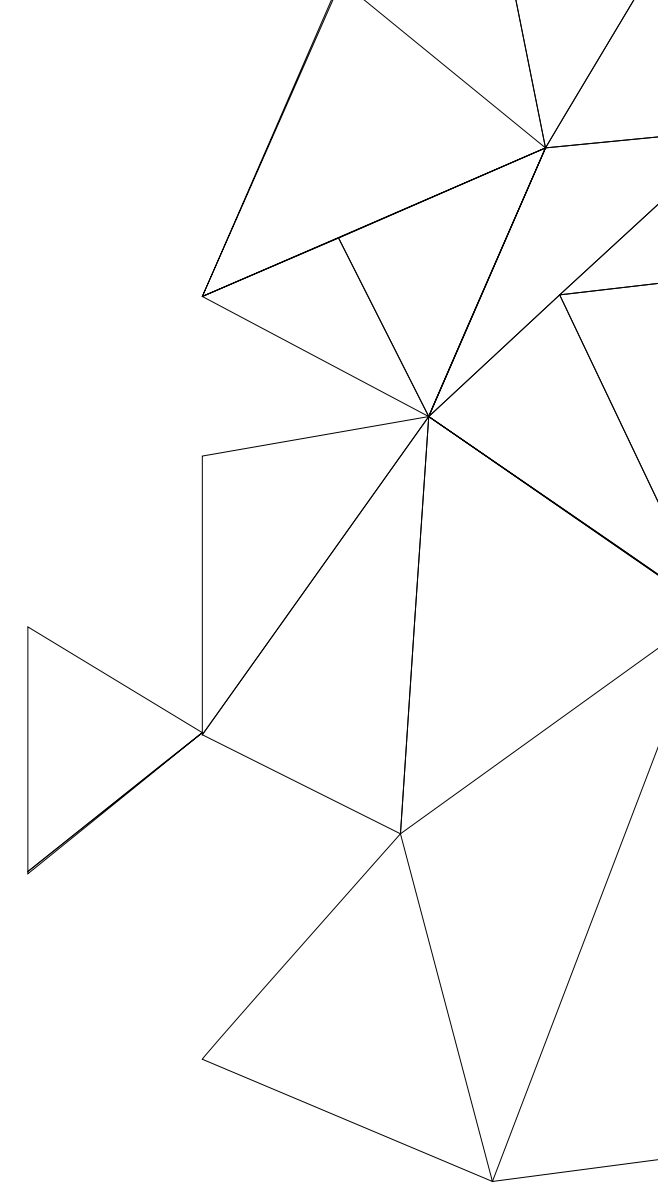
Up Check Gold 32,5x32,5

Tavella Plaster 16,2x97,7





Ambiente realizzato con:
Setting realized with:
Square Ivory 32,5x32,5
Check Ivory 32,5x32,5



I VORY

Ambiente realizzato con:
Setting realized with:
Check Ivory 32,5x32,5
Up Check Gold 32,5x32,5
Square Ivory 32,5x32,5



BLACK WHITE

- Pure White 32,5x65
- Square White 32,5x32,5
- Square Black 32,5x32,5
- Maxxi Black 32,5x32,5
- Shard White pav. matt 32,5x32,5

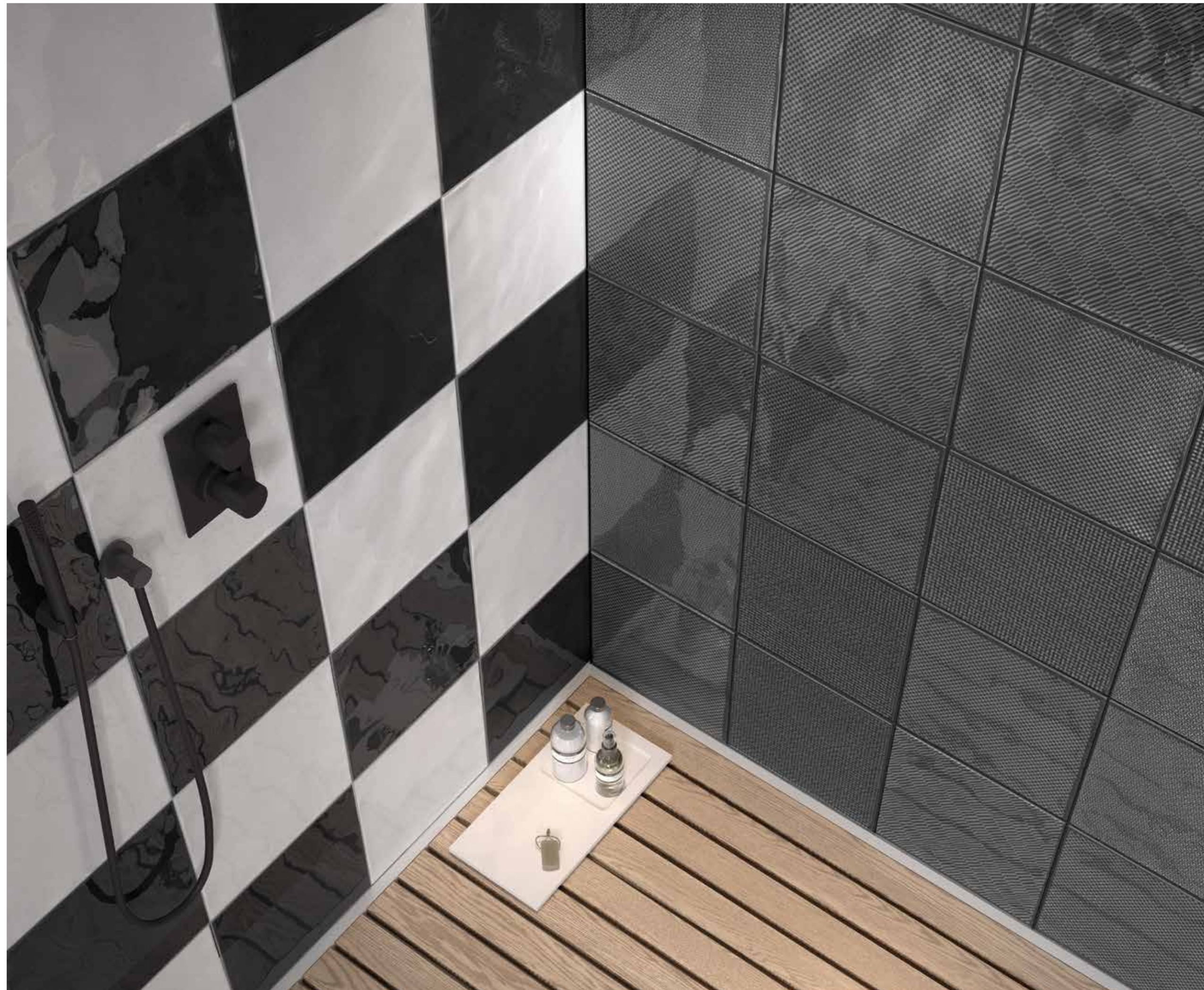
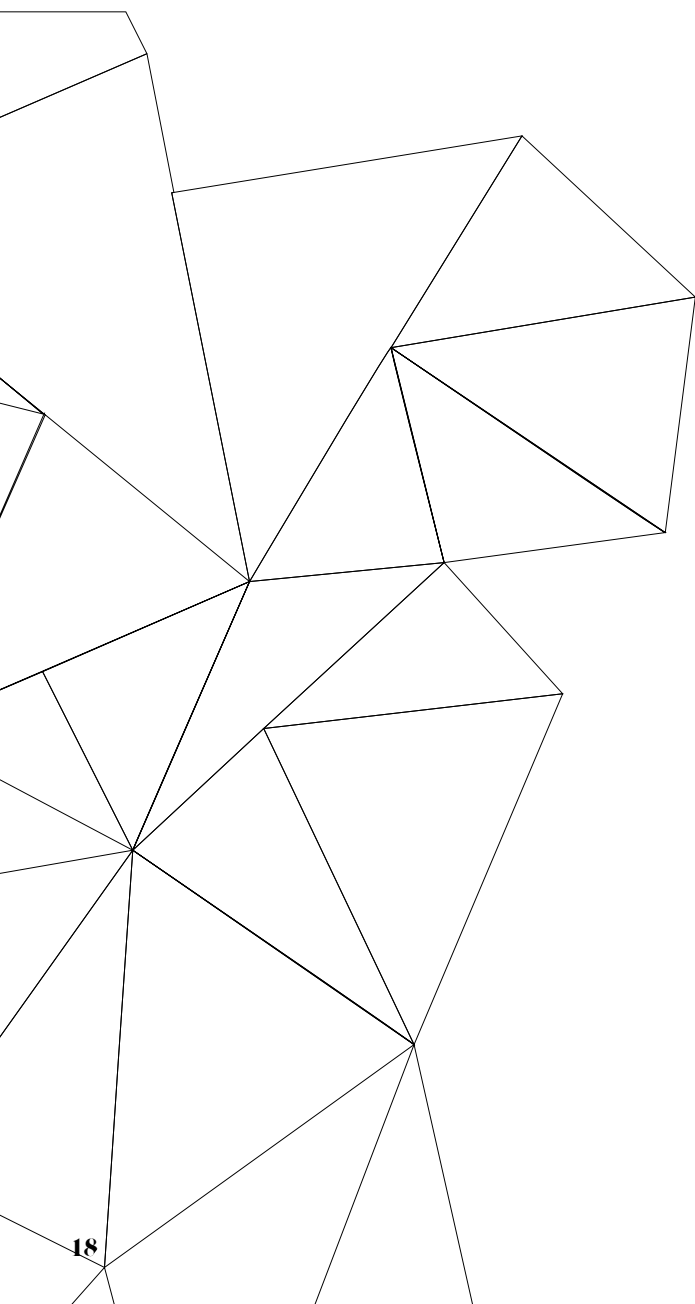
Ambiente realizzato con:
Setting realized with:
Square White 32,5x32,5
Pure White 32,5x65



R LACK W HITE

Ambiente realizzato con:
Setting realized with:

Square White 32,5x32,5
Square Black 32,5x32,5
Maxxi Black 32,5x32,5





R BLACK W WHITE

Ambiente realizzato con:
Setting realized with:

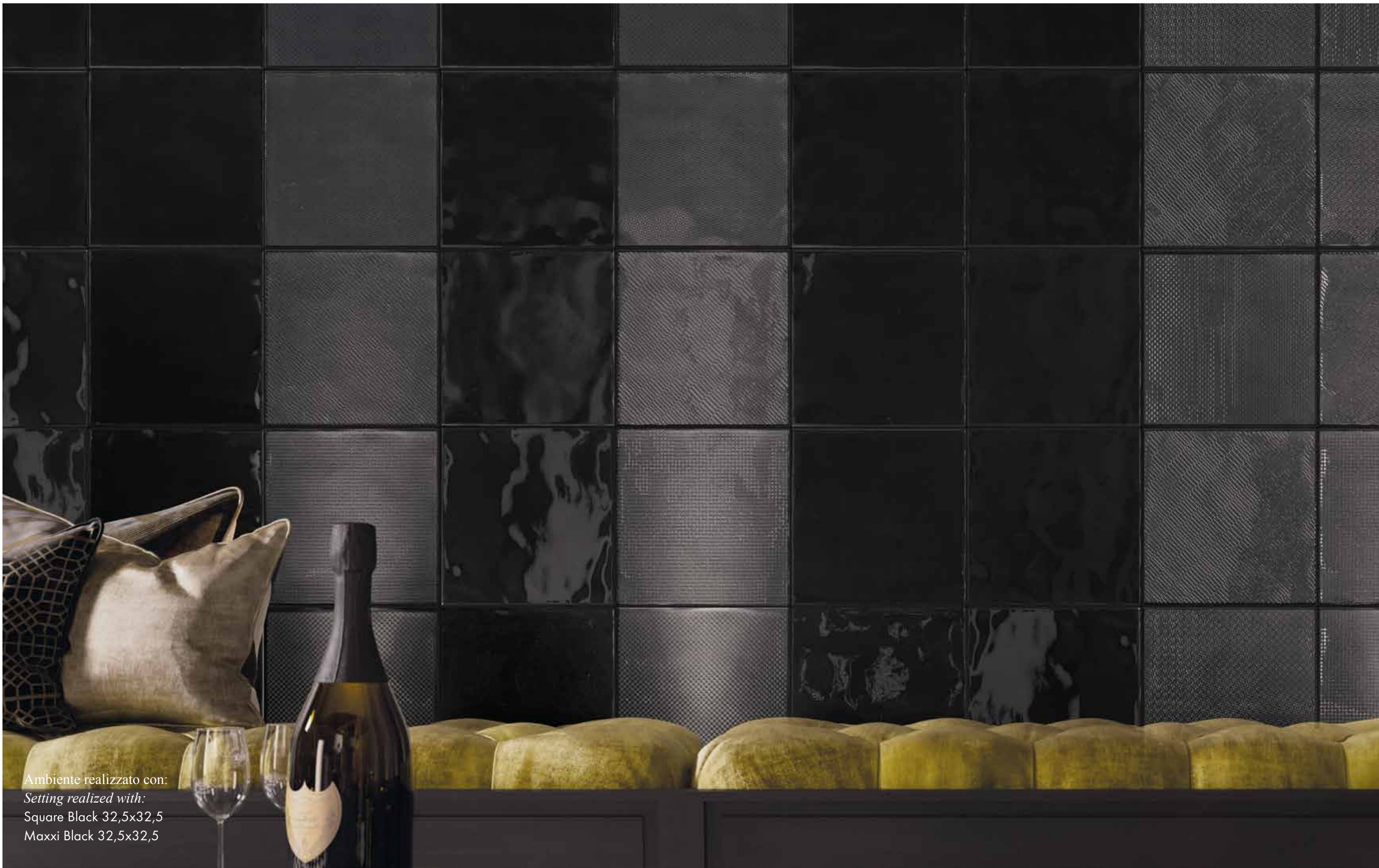
Square Black 32,5x32,5

Maxxi Black 32,5x32,5

Maxxi White 32,5x32,5

Shard White pav. matt 32,5x32,5

Shard Black pav. matt 32,5x32,5



Ambiente realizzato con:
Setting realized with:
Square Black 32,5x32,5
Maxxi Black 32,5x32,5

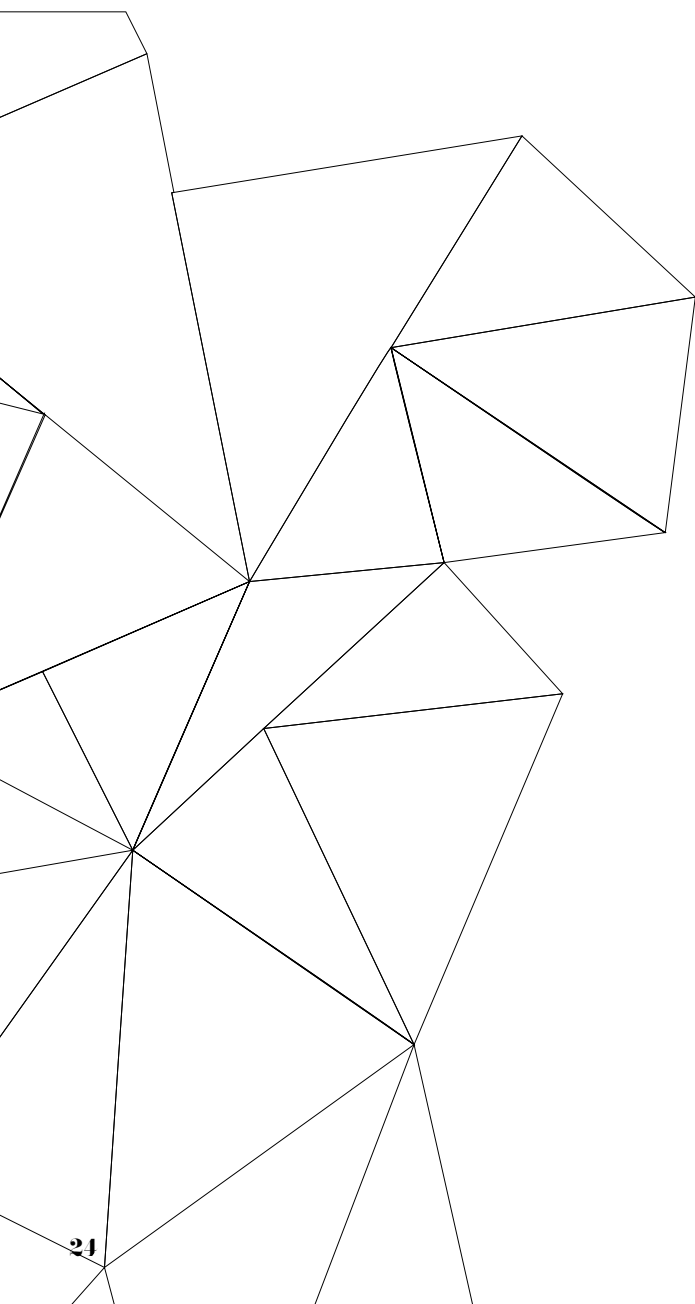
BLACK WHITE

Ambiente realizzato con:
Setting realized with:

Maxxi White 32,5x32,5

Shard White pav. matt 32,5x32,5

Shard Black pav. matt 32,5x32,5



WILLOW

Ambiente realizzato con:
Setting realized with:

Square Ivory 32,5x32,5

Square Willow 32,5x32,5

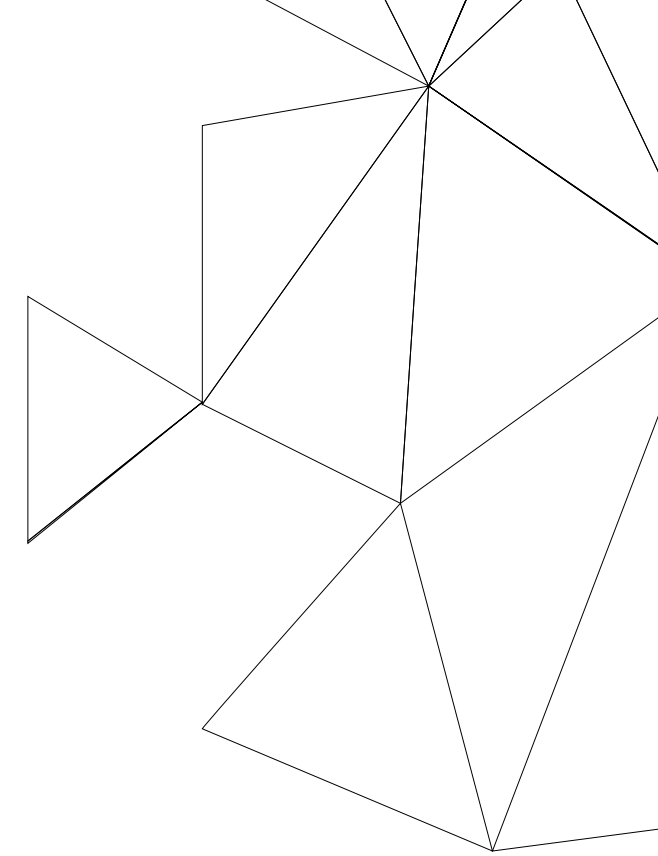
Check Ivory 32,5x32,5

Check Willow 32,5x32,5

UP Check Gold 32,5x32,5

Fassa pav. 23x100





WILLOW

Ambiente realizzato con:

Setting realized with:

Square Ivory 32,5x32,5

Square Willow 32,5x32,5

Check Ivory 32,5x32,5

Check Willow 32,5x32,5

UP Check Gold 32,5x32,5

pasta bianca / white body



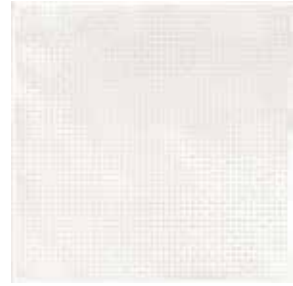
87805 Pure White ■ 117
32,5x65



87819 Square White ■ 121
32,5x32,5



88084 Check White ■ 129
32,5x32,5



88163 Maxxi White ● 109
32,5x32,5



pasta bianca / white body



87804 Pure Ivory ■ 117
32,5x65



87817 Square Ivory ■ 121
32,5x32,5



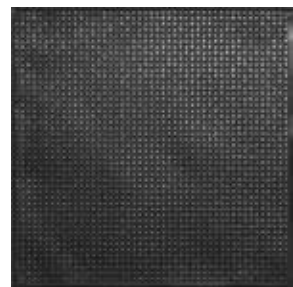
88085 Check Ivory ■ 129
32,5x32,5



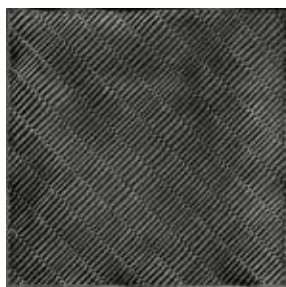
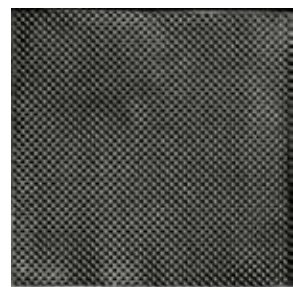
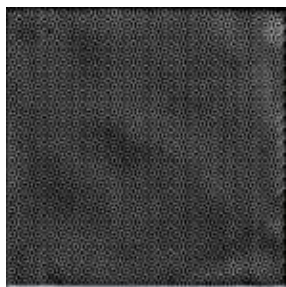
87815 Square Black ■ 129
32,5x32,5



88086 Check Black ■ 133
32,5x32,5



88164 Maxxi Black ● 109
32,5x32,5



87816 Square Grey ■ 129
32,5x32,5



88087 Check Grey ■ 133
32,5x32,5



88157 Up Check Platinum ● 194
32,5x32,5



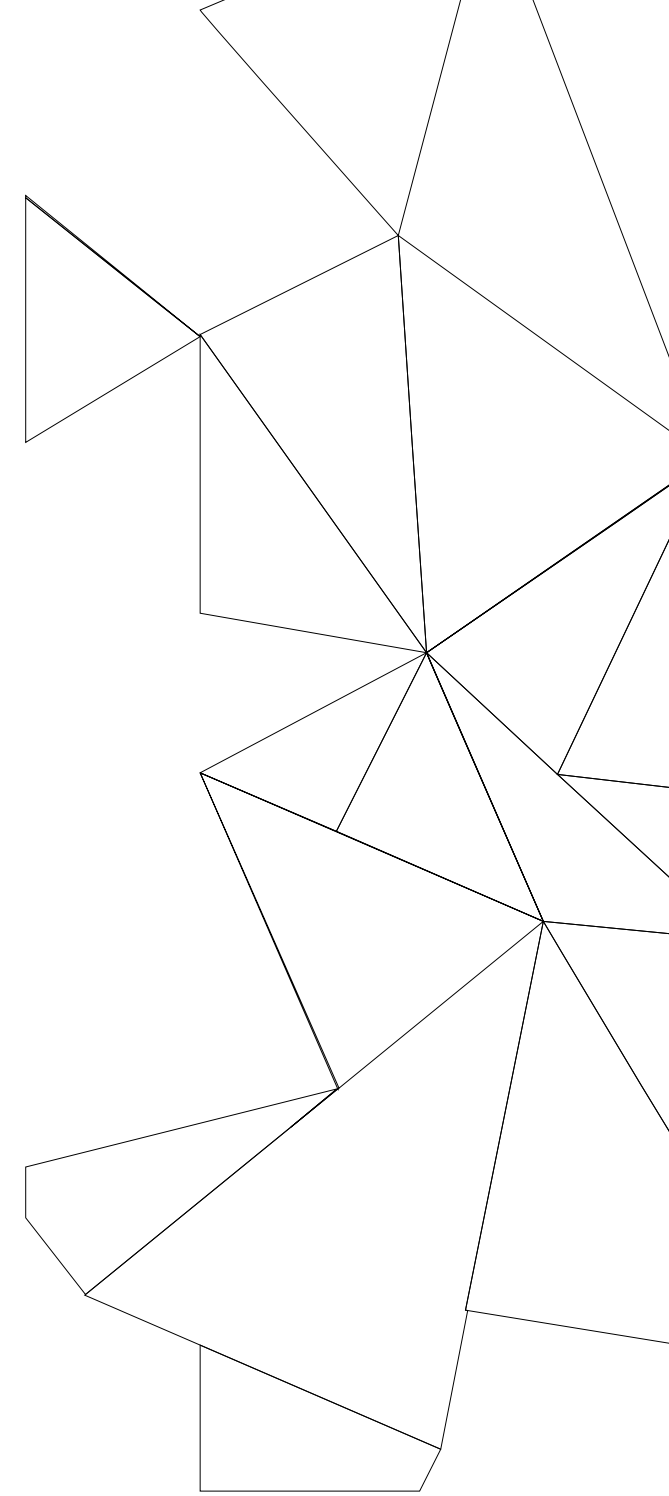
87820 Square Willow ■ 129
32,5x32,5



88089 Check Willow ■ 133
32,5x32,5



88156 Up Check Gold ● 198
32,5x32,5



SHARD

gres fine porcellanato
fine porcelain stoneware



89094 Selva
23x100 ■ 99



89092 Fassa
23x100 ■ 99



89093 Ortles
23x100 ■ 99



89091 Ega
23x100 ■ 99

PAVIMENTI FLOOR TILES

pasta bianca
white body



82030 Tavella Plaster rett.
16,2x97,7 ■ 192



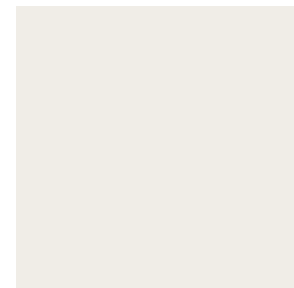
81162 Tavella Taupe rett.
16,2x97,7 ■ 192



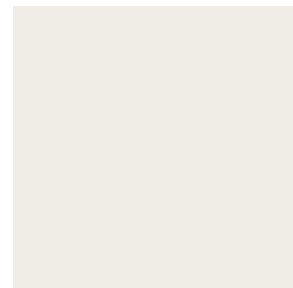
81253 Tavella White Clay rett.
16,2x97,7 ■ 192



81251 Tavella Concrete rett.
16,2x97,7 ■ 192



91055 Shard White
lev. rett. 32,5x32,5 ■ 165



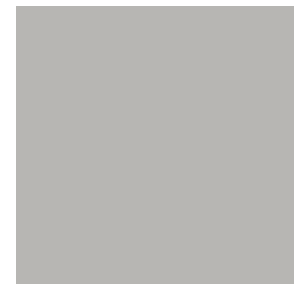
91047 Shard White
matt rett. 32,5x32,5 ■ 105



91058 Shard Black
lev. rett. 32,5x32,5 ■ 165



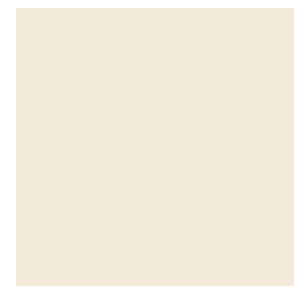
91050 Shard Black
matt rett. 32,5x32,5 ■ 105



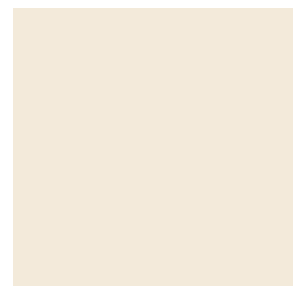
91057 Shard Grey
lev. rett. 32,5x32,5 ■ 165



91049 Shard Grey
matt rett. 32,5x32,5 ■ 105



91056 Shard Ivory
lev. rett. 32,5x32,5 ■ 165



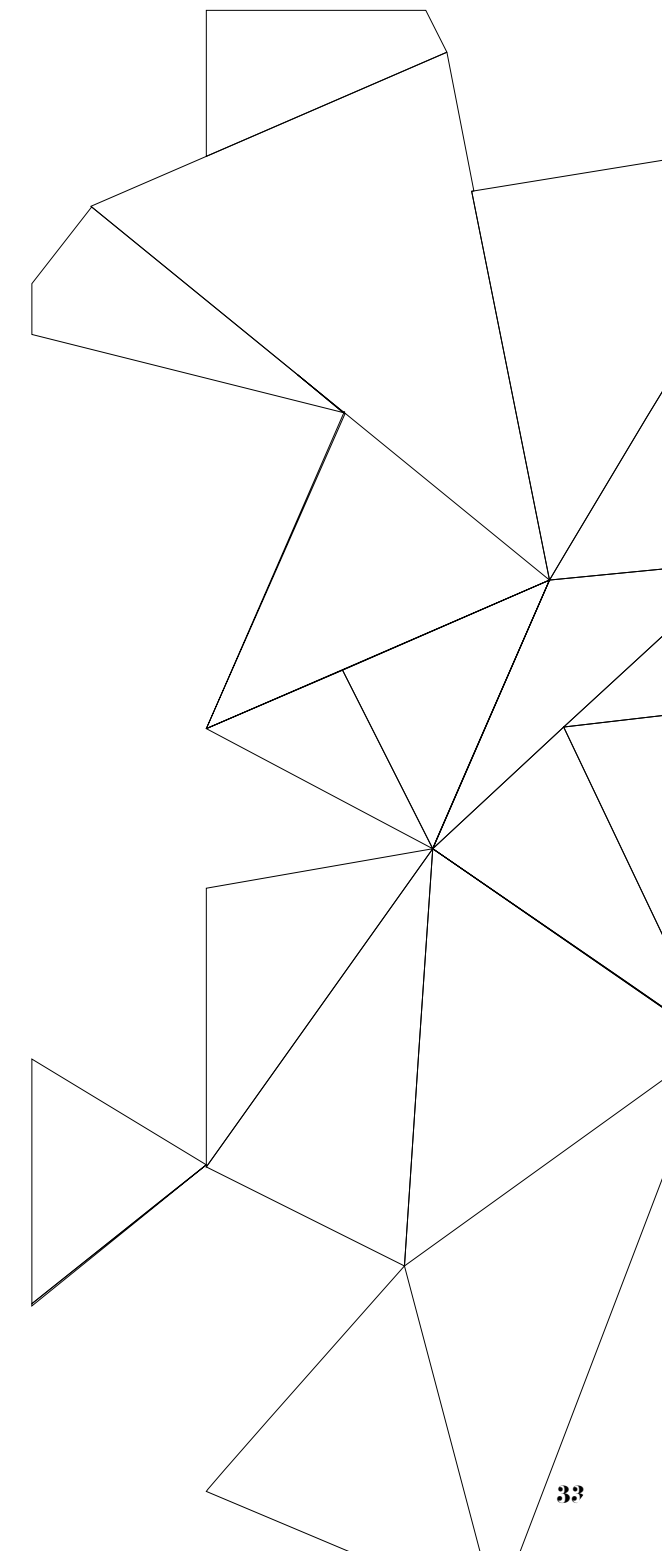
91048 Shard Ivory
matt rett. 32,5x32,5 ■ 105




91059 Shard Willow
lev. rett. 32,5x32,5 ■ 165





91054 Shard Willow
matt rett. 32,5x32,5 ■ 105



pesi e imballi rivestimento / weights and packages wall tile

	32,5x65 riv.	32,5x32,5 riv.	32,5x32,5 Up check	32,5x32,5 maxxi
	Pc. 5	10	2	4
	m² 1,06	1,06		
	Kg 20,9	20,9	4,18	8,36
	Colli/Boxes 40	44		
	m² 42,4	46,64		
	Kg 836	919,6		

pesi e imballi pavimento / weights and packages floor tile

	23x100 pav.	16,2x97,7 tavella	32,5x32,5 pav.
	Pc. 5	6	11
	m² 1,15	0,953	1,16
	Kg 24,5	20,1	20,1
	Colli/Boxes 42	20	52
	m² 48,3	19,06	60,32
	Kg 1029	402	1045,2

Note/Notes

I prodotti possono essere modificati da Fincibec senza preavviso, respingendo ogni responsabilità su possibili danni diretti o indiretti causati da potenziali modifiche.

Fincibec reserves the right to modify its products without prior notice and cannot be held liable for direct or indirect damage caused by such modifications.

Verificare sempre la correttezza delle informazioni e dei dati relativi a codici, imballaggi e pesi, consultando il listino prezzi in vigore. Always refer to the price list in force to ensure correct information and data on codes, packaging, and weight.





Le tonalità dei colori riportate nel catalogo sono indicative / The colours shades, reported on the catalogue, are indicative.

categorie d'impiego per pavimenti in gres fine porcellanato/ use classes for fine porcelain stoneware floors

C1	Piastrelle da pavimento consigliate per traffico leggero Floor tiles recommended for light traffic
C2	Piastrelle da pavimento consigliate per traffico medio-leggero Floor tiles recommended for medium-light traffic
C3	Piastrelle da pavimento consigliate per traffico medio Floor tiles recommended for medium traffic
C4	Piastrelle da pavimento consigliate per traffico medio-pesante Floor tiles recommended for medium-heavy traffic
C5	Piastrelle da pavimento consigliate per impieghi con forti sollecitazioni Floor tiles recommended for highly stresses uses

SELVA
FASSA
ORTLES
EGA


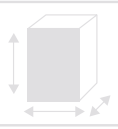





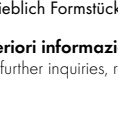

variazioni cromatiche/ colour variations

	V1 Aspetto uniforme Even appearance
	V2 Lieve variazione Light variation
	V3 Media variazione Medium variation
	V4 Intensa variazione Strong variation

È indispensabile all'atto della posa, prelevare le piastrelle da più confezioni. It is necessary to take the tiles from several different boxes when laying them.

caratteristiche tecniche / technical data

Rivestimenti in pasta bianca // White body and double fired wall tiles / Revêtements en pâte blanche / Weißscherbige Wand- und Bodenfliesen / Revestimientos en pasta blanca



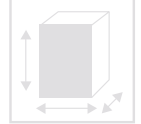









 NAXOS FINCIBEC GROUP ISO 13006BIII EN 14411/L	Caratteristiche tecniche Technical data Caractéristiques techniques Technische Daten Características técnicas	Tipo di prova Standard of test Norme du test Testnorm Tipo de prueba	Valore Naxos Naxos standards Valeur Naxos Ergebnis Naxos Valor de Naxos
	Dimensioni Sizes Dimensions Abmessungen Dimensiones	ISO 10545.2	A norma According to norm Selon la norme Nach Norm Conforme
	Assorbimento d'acqua Water absorption Absorption d'eau Wasseraufnahme Absorción del agua	ISO 10545.3	> 10%
	Sforzo di rottura Modulus of rupture Effort de rupture Bruchlast Esfuerzo de rotura	ISO 10545.4	S ≥ 600 N
	Resistenza a flessione Breaking strength Resistance a la flexion Biegefestigkeit Resistencia a la flexión	ISO 10545.4	R ≥ 12 N/mm²
	Coefficiente di dilatazione termica lineare Thermal expansion coefficient Coefficient de dilatation thermique lineare Wärmeausdehnungskoeffizient Coeficiente de dilatación termica lineal	ISO 10545.8	A norma According to norm Selon la norme Nach Norm Conforme
	Resistenza al cavillo Crazing resistance Resistance à la craquelure Widerstand gegen haarriss Resistencia al cuarteado	ISO 10545.11	Garantita Guaranteed Garantie Garantiert Garantizada
	Resistenza all'attacco chimico Chemical resistance Resistance chimique Beständigkeit gegen Chemikalien Resistencia al ataque químico	ISO 10545.13	A norma According to norm Selon la norme Nach Norm Conforme
	Resistenza alle macchie Stains resistance Resistance aux taches Fleckenbeständigkeit Resistencia a las manchas	ISO 10545.14	A norma According to norm Selon la norme Nach Norm Conforme

Escluso pezzi speciali ed elementi decorativi

With the exception of special pieces and decors | A l'exception de pièces spéciales et éléments décoratifs
Ausschließlich Formstücke und Dekorteile | Excluido piezas especiales y elementos decorativos

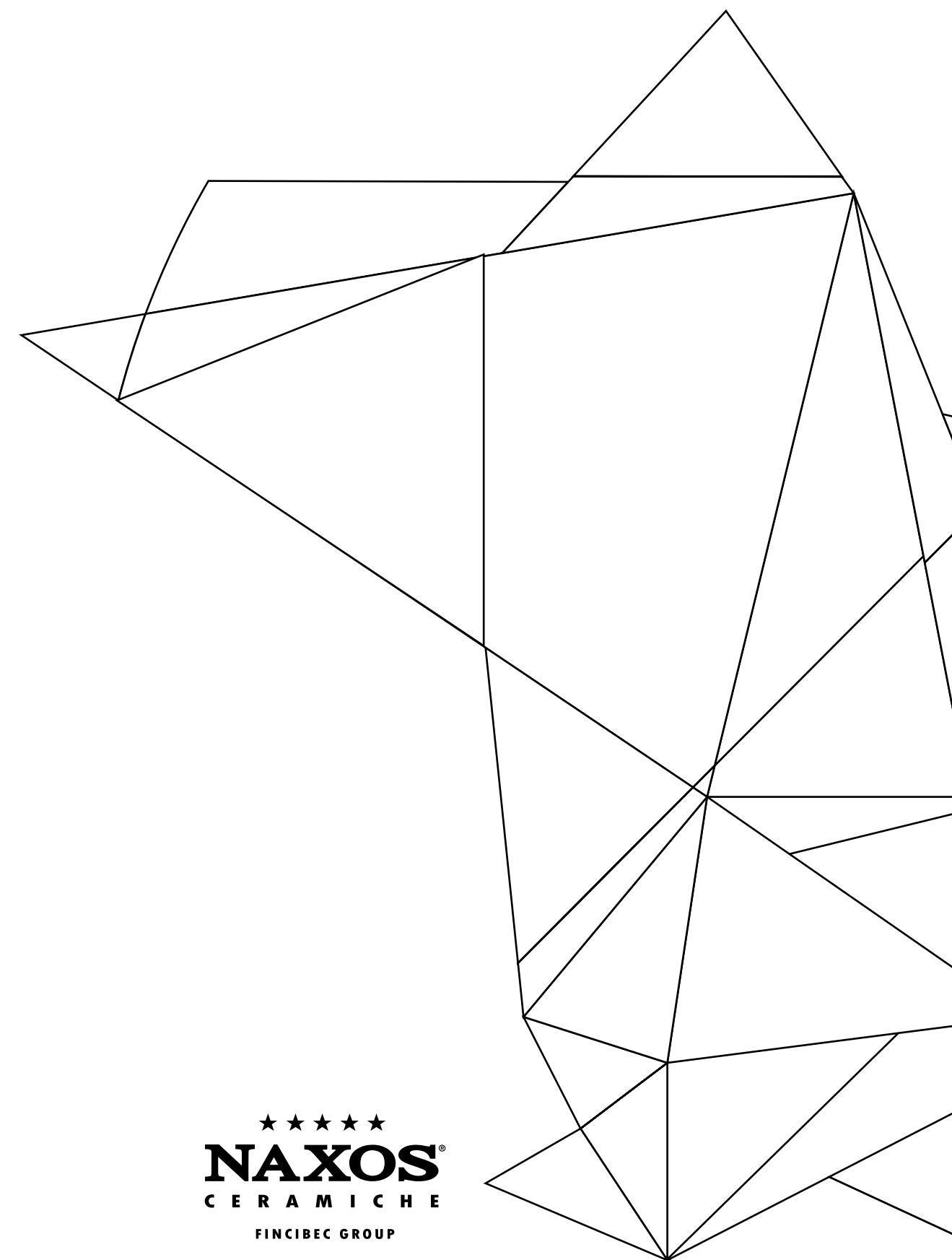
Per ulteriori informazioni consultare le schede tecniche dal sito www.naxos-ceramica.it

For any further inquiries, refer to the data sheets on the web-site www.naxos-ceramica.it

 ***** NAXOS FINCIBEC GROUP ISO 13006B1a EN 14411/G	Caratteristiche tecniche Technical data Caractéristiques techniques Technische Daten Características técnicas	Tipo di prova Standard of test Norme du test Testnorm Tipo de prueba 	Valore Naxos Naxos standards Valeur Naxos Ergebnis Naxos Valor de Naxos
	Dimensioni Sizes Dimensions Abmessungen Dimensiones	ISO 10545.2	A norma According to norm Selon la norme Nach Norm Conforme
	Assorbimento d'acqua Water absorption Absorption d'eau Wasseraufnahme Absorción del agua	ISO 10545.3	≤ 0,5%
	Sforzo di rottura Modulus of rupture Effort de rupture Bruchlast Esfuerzo de rotura	ISO 10545.4	S ≥ 1300 N
	Resistenza a flessione Breaking strength Resistance a la flexion Biegefestigkeit Resistencia a la flexión	ISO 10545.4	R ≥ 35 N/mm ²
	Resistenza agli shock termici Resistance to thermal shock Resistance aux chocs thermique Temperaturwechselbeständigkeit Resistencia a los cambios térmicos	ISO 10545.9	Garantita Guaranteed Garantie Garantiert Garantizada
	Resistenza al gelo Frost resistance Resistance au gel Frostbeständigkeit Resistencia a la helada	ISO 10545.12	Garantita Guaranteed Garantie Garantiert Garantizada
	Coefficiente di dilatazione termica lineare Thermal expansion coefficient Coefficient de dilatation thermique lineare Wärmeausdehnungskoeffizient Coeficiente de dilatación termica lineal	ISO 10545.8	A norma According to norm Selon la norme Nach Norm Conforme
	Resistenza all'attacco chimico Chemical resistance Resistance chimique Beständigkeit gegen Chemicalien Resistencia al ataque químico	ISO 10545.13	A norma According to norm Selon la norme Nach Norm Conforme
	Resistenza alle macchie Stains resistance Resistance aux taches Fleckenbeständigkeit Resistencia a las manchas	ISO 10545.14	A norma According to norm Selon la norme Nach Norm Conforme
 Resistenza allo scivolamento Slip Resistance Resistance au glissement Rutschfestigkeit Resistencia del resbalon	ANSI A 137.1 - DCOF (Coefficiente di attrito dinamico) (Coefficient of kinetic friction)	WET > 0,42 Fassa, Ega, Ortles, Selva	
	DIN 51130	R9 Fassa, Ega, Ortles, Selva	

Escluso pezzi speciali ed elementi decorativi
 With the exception of special pieces and decors

Per ulteriori informazioni consultare le schede tecniche dal sito www.naxos-ceramica.it
 For any further inquiries, refer to the data sheets on the web-site www.naxos-ceramica.it



★ ★ ★ ★ ★
NAXOS[®]
C E R A M I C H E

FINCIBEC GROUP



FINCIBEC S.p.A.
Uffici Comm.li, Stabilimento:
Strada Statale 569, 169
41014 Solignano (MO) Italy

Magazzino:
Strada Statale 569, 169
41014 Solignano (MO) Italy
Tel. +39 059.748811
Fax +39 059.797376
www.naxos-ceramica.it
info@naxos-ceramica.it

Amministrazione:
via Valle d'Aosta, 47
41049 Sassuolo (MO) Italia
Tel. +39 0536.861300
Fax Uff. Amm. + 39 0536.861351
www.fincibec.it
info@fincibec.it

GRUPPO FIRE - Fire s.r.l.

