

SHINY

★★★★★
NAXOS[®]
C E R A M I C H E
F I N C I B E C G R O U P

SHINY

INDICE

index

SHINY

RIVESTIMENTI IN PASTA BIANCA RETTIFICATI
RECTIFIED WHITE BODY WALL TILES

42,5x119,2 cm.
16,7"x46,9"

31,2x79,7 cm.
12,3"x31,3"

Shiny Sage	p.06	Selva . Ribe . Luma	p.42
Shiny Sage . Twine White	p.12	Veld . Veld Line . Veld Sign	p.46
Shiny Light . Shiny Black	p.16	Camben . Quebec Line	p.50
Shiny Black . Structure White Structure Black	p.22	Camben . Provence Line	p.56
Shiny Light . Twine Grey	p.26	Tovel . Ribe Line	p.60
Shiny Grey . Bright	p.32	Canyon . Camben Sign	p.66
Shiny Grey	p.36	Camben Line	p.70

LA VERSATILITÀ DEL COLORE

THE VERSATILITY OF COLOUR

Shiny è una collezione che interpreta uno stile contemporaneo, spiccatamente elegante, raffinato. È una delle proposte più complete, ricche e versatili che Naxos ha presentato in questi anni. Una grande varietà di soluzioni, articoli, colori e formati.

The Shiny collection interprets a sophisticated, decidedly elegant contemporary style. This is one of the most comprehensive, rich and versatile offers to be presented by Naxos in the last few years. A wide variety of solutions, articles, colours and formats.

Ciò che rende Shiny preziosa ed unica è il suo valore espressivo, creato con l'impiego di particolari smalti metallizzati, ulteriormente esaltato dalla struttura delle superfici e dai colori, sempre brillanti e luminosi.

The feature that makes Shiny so unique is its expressive quality, achieved through the use of special metallised glazes and enhanced by the structure of the surfaces and by the collection's bright luminous colours.



SHINY

LA MODERNITÀ DEI FORMATI

MODERN FORMATS

Due formati, con il 42,5x119,2 particolarmente importante, che presentano colori base preziosi e in linea con le ultime tendenze dell'arredo bagno, orientati ad un sofisticato minimalismo.

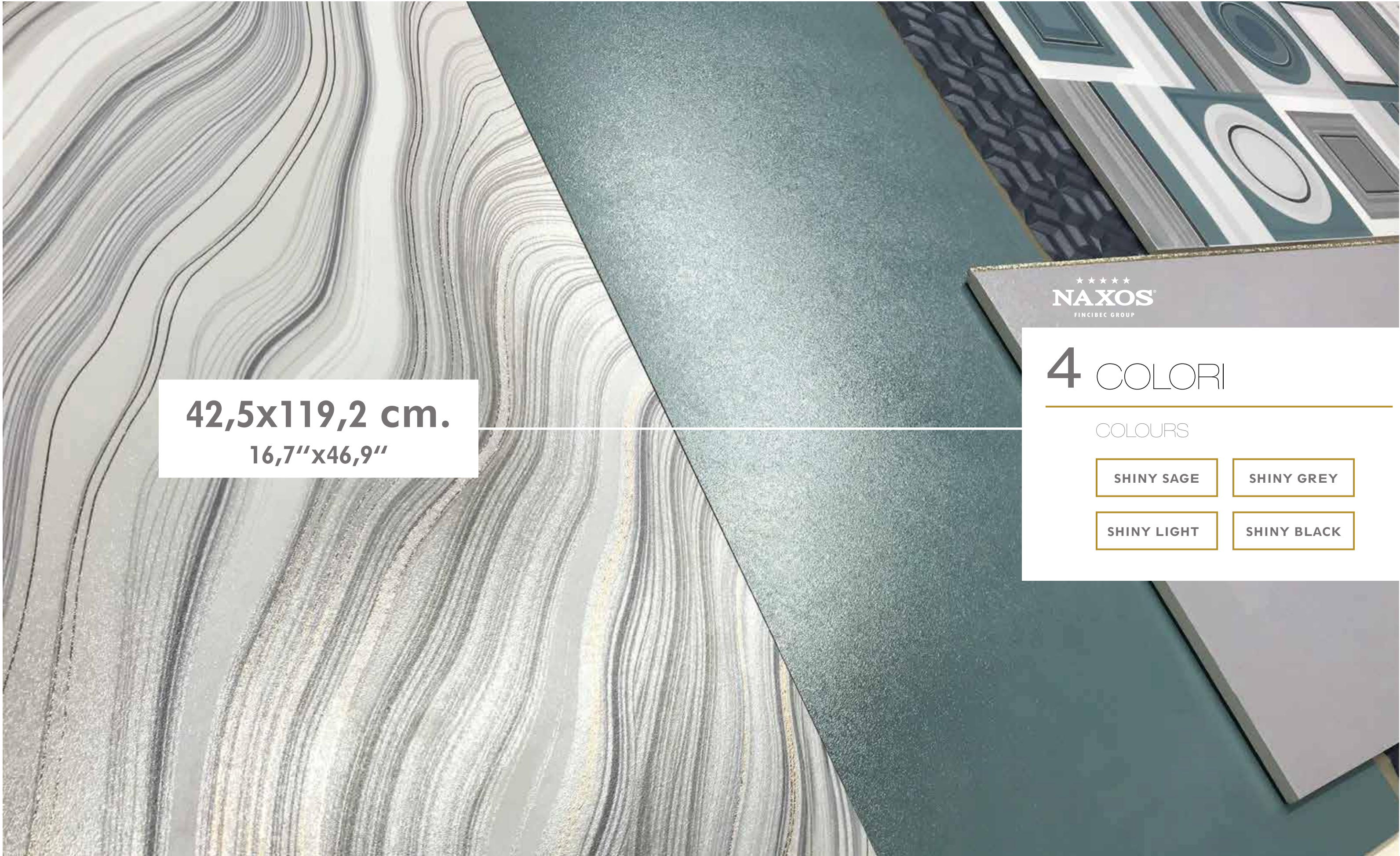
Two formats are available, notably a 42.5x119.2, in appealing basic colours in line with the latest trends in bathroom décor, where the focus is on sophisticated minimalism.

Il formato 31,2x79,7 sviluppa una variegata proposta di colori, arricchita da decorazioni inedite ed originali e mosaici che sottolineano la natura contemporanea e versatile della collezione.

The 31.2x79.7 format comes in a varied range of colours, enhanced with original decorations and mosaics emphasising the contemporary and versatile style of the collection.

42,5x119,2 cm.
 16,7"x46,9"

31,2x79,7 cm.
 12,3"x31,3"



42,5x119,2 cm.
16,7"x46,9"

★★★★★
NAXOS
FINCIBEC GROUP

4 COLORI

COLOURS

SHINY SAGE

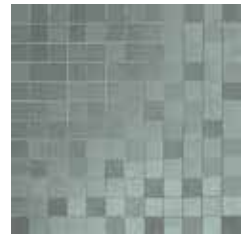
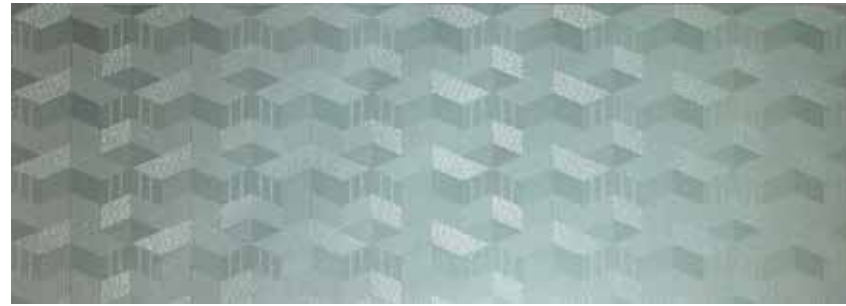
SHINY GREY

SHINY LIGHT

SHINY BLACK

42,5x119,2 cm.
16,7"x46,9"

FASCIA
MAGIC SAGE



MOSAICO
DECÒ
SAGE



SHINY
SAGE





42,5x119,2 cm.
16,7"x46,9"

**INFINITE
SOLUZIONI
UN UNICO
STILE** AN INFINITY
OF SOLUTIONS,
A SINGLE
STYLE

42,5x119,2 cm.
16,7"x46,9"

TWINE WHITE



SHINY
SAGE



FASCIA
FILIGREE
GREEN





Ambiente realizzato con
Setting realized with:

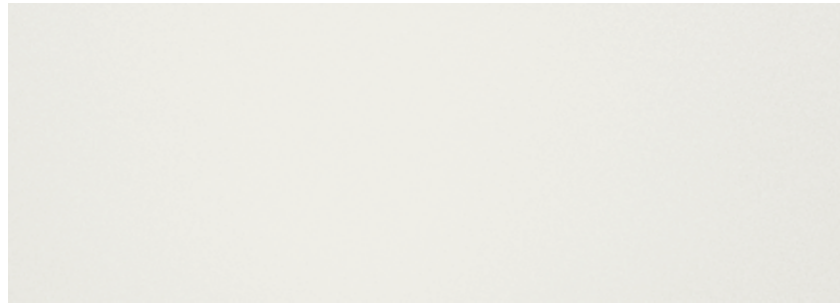
Shiny Sage 42,5x119,2 . 16,7"x46,9"

Twine White 42,5x119,2 . 16,7"x46,9"

Fascia Filigree Green 42,5x119,2 . 16,7"x46,9"

Pav. Shiny Light 60x60 . 24"x24"

SHINY
LIGHT



SHINY
BLACK



MOSAICO
DECÒ
BLACK



FASCIA
FLUID
MIX





42,5x119,2 cm.
16,7"x46,9"

L'ELEGANZA DEL MINIMALISMO

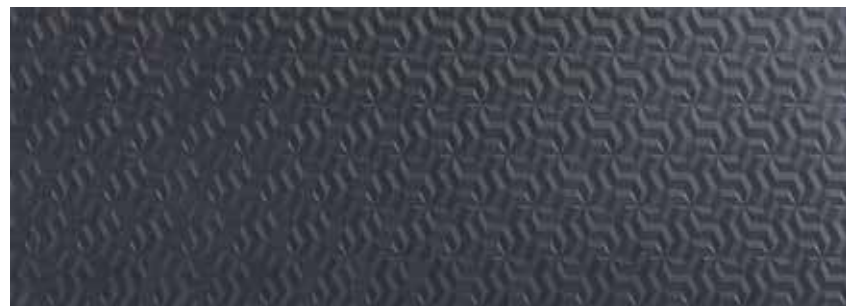
THE ELEGANCE
OF MINIMALISM

42,5x119,2 cm.
16,7"x46,9"

MATITA
SHINY



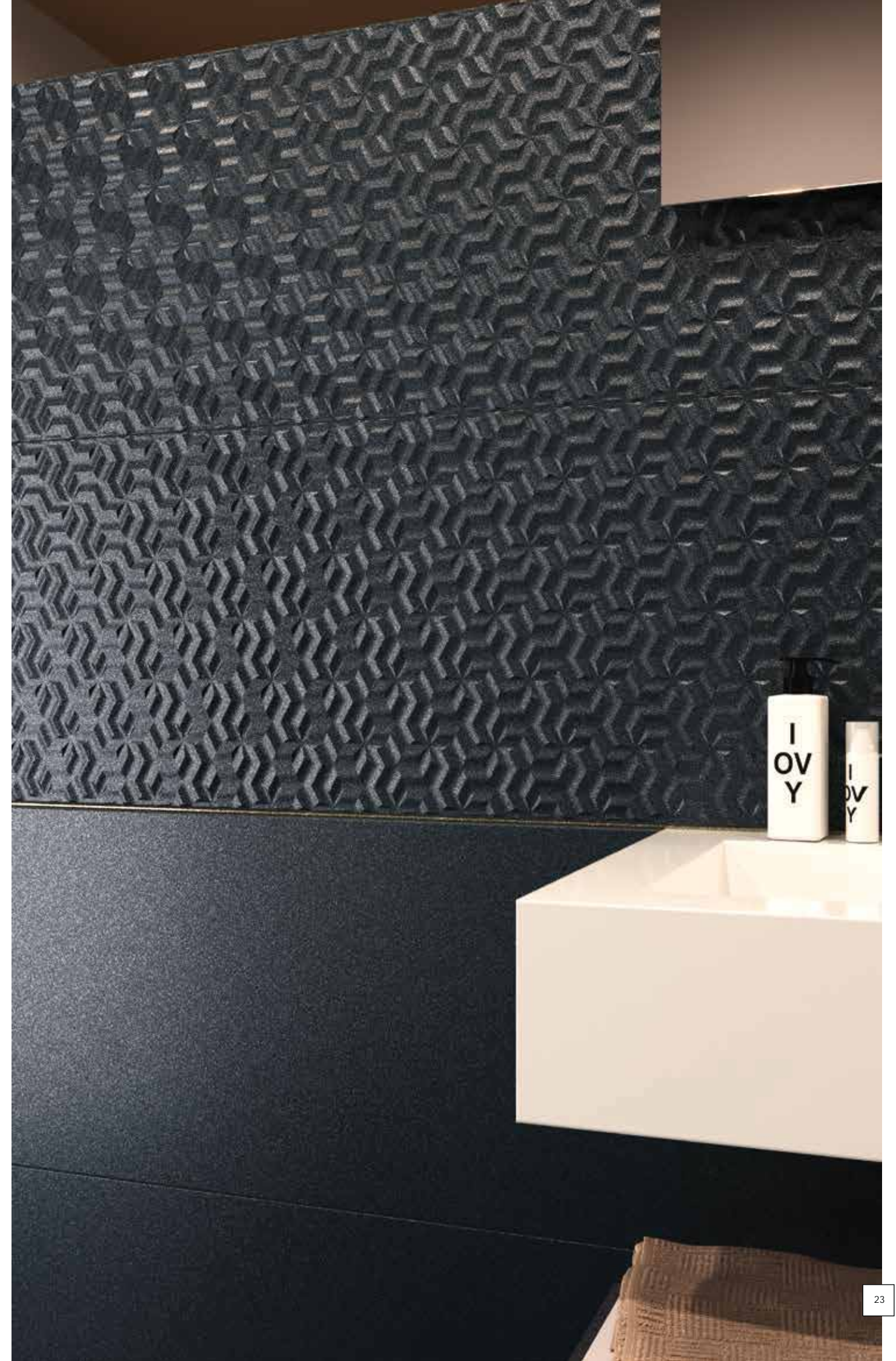
STRUCTURE
WHITE



STRUCTURE
BLACK



SHINY
BLACK



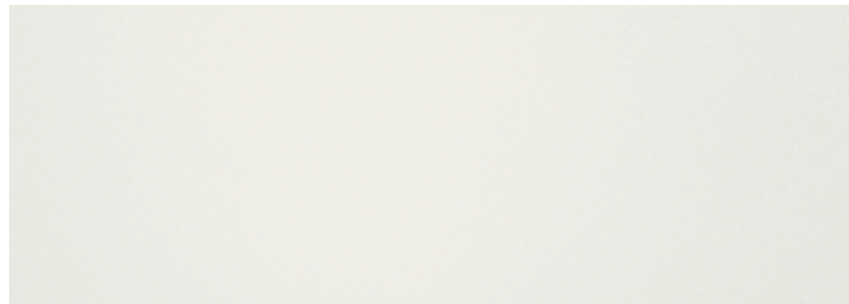


Ambiente realizzato con - Setting realized with:
Shiny Black 42,5x119,2 . 16,7"x46,9" \ Structure Black 42,5x119,2 . 16,7"x46,9" \ Structure White 42,5x119,2 . 16,7"x46,9"
Matita Shiny 0,5x119,2 . 0,19"x46,9" \ Pav. Shiny Black 60x60 . 24"x24"

42,5x119,2 cm.
16,7"x46,9"



FASCIA
BRILLANT MIX



SHINY
LIGHT



TWINE
GREY



IDRO
GREY





42,5x119,2 cm.
16,7"x46,9"

SHINY: SPAZI UNICI E BRILLANTI

SHINY:
UNIQUE
BRILLIANT
SPACES



42,5x119,2 cm.
16,7"x46,9"

MATITA
SHINY

SHINY
GREY



FASCIA
DADA

BRIGHT





Ambiente realizzato con - Setting realized with:
Shiny Grey 42,5x119,2 . 16,7"x46,9" \ Bright 42,5x119,2 . 16,7"x46,9" \ Fascia Dada 42,5x119,2 . 16,7"x46,9"
Matita Shiny 0,5x119,2 . 0,19"x46,9" \ Pav. Shiny Grey 60x60 . 24"x24"

42,5x119,2 cm.
16,7"x46,9"

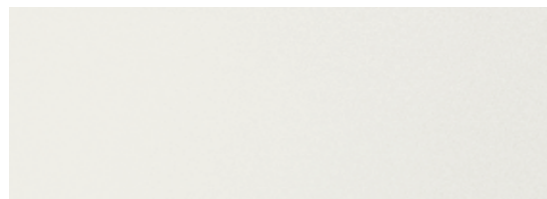


SHINY
GREY

Ambiente realizzato con
Setting realized with:

Shiny Grey 42,5x119,2 . 16,7"x46,9"
Pav. Shiny Grey 60x60 . 24"x24"





42,5x119,2 . 16,7"x46,9"
110588 SHINY LIGHT
■ 175



42,5x119,2 . 16,7"x46,9"
110614 BRIGHT
■ 184



42,5x119,2 . 16,7"x46,9"
110617 STRUCTURE WHITE
■ 184



42,5x119,2 . 16,7"x46,9"
110615 TWINE WHITE
■ 184



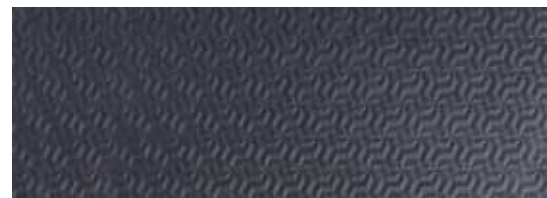
42,5x119,2 . 16,7"x46,9"
110589 SHINY GREY
■ 175



42,5x119,2 . 16,7"x46,9"
112388 TWINE GREY
■ 184



42,5x119,2 . 16,7"x46,9"
110613 SHINY BLACK
■ 175



42,5x119,2 . 16,7"x46,9"
110620 STRUCTURE BLACK
■ 184



42,5x119,2 . 16,7"x46,9"
110597 SHINY SAGE
■ 175

DECORI DECORS



42,5x119,2 . 16,7"x46,9"
113108 FASCIA DADA
● 206



42,5x119,2 . 16,7"x46,9"
113112 FASCIA MAGIC LIGHT
● 195



32,5x32,5 . 12,7"x12,7"
113115 MOS.DECÒ GREY (T. 144)
● 75



42,5x119,2 . 16,7"x46,9"
* **113110 FASCIA FLUID MIX**
● 202



42,5x119,2 . 16,7"x46,9"
113113 FASCIA MAGIC GREY
● 195



32,5x32,5 . 12,7"x12,7"
113116 MOS.DECÒ SAGE (T. 144)
● 75



42,5x119,2 . 16,7"x46,9"
113109 FASCIA FILIGREE GREEN
● 202



42,5x119,2 . 16,7"x46,9"
113114 FASCIA MAGIC SAGE
● 195



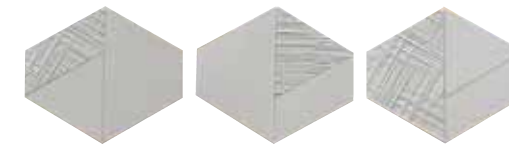
32,5x32,5 . 12,7"x12,7"
113117 MOS.DECÒ BLACK (T. 144)
● 75



42,5x119,2 . 16,7"x46,9"
* **113111 FASCIA BRILLANT MIX**
● 195



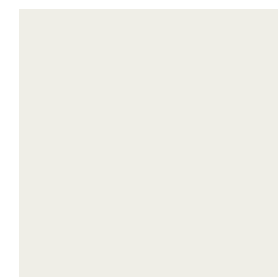
0,5x119,2 . 0,19"x46,9"
113123 MATITA SHINY
● 67



20,3x35 . 7,9"x13,7"
113118 IDRO GREY
● 29

* Versione decoro con più soggetti confezionati random
Decor version with multiple subjects, packaged randomly

PAVIMENTI IN GRES FINE PORCELLANATO RETTIFICATI . RECTIFIED FINE PORCELAIN STONEWARE FLOOR TILES



60x60 . 24"x24"
113119 SHINY LIGHT
■ 105



60x60 . 24"x24"
113120 SHINY GREY
■ 105



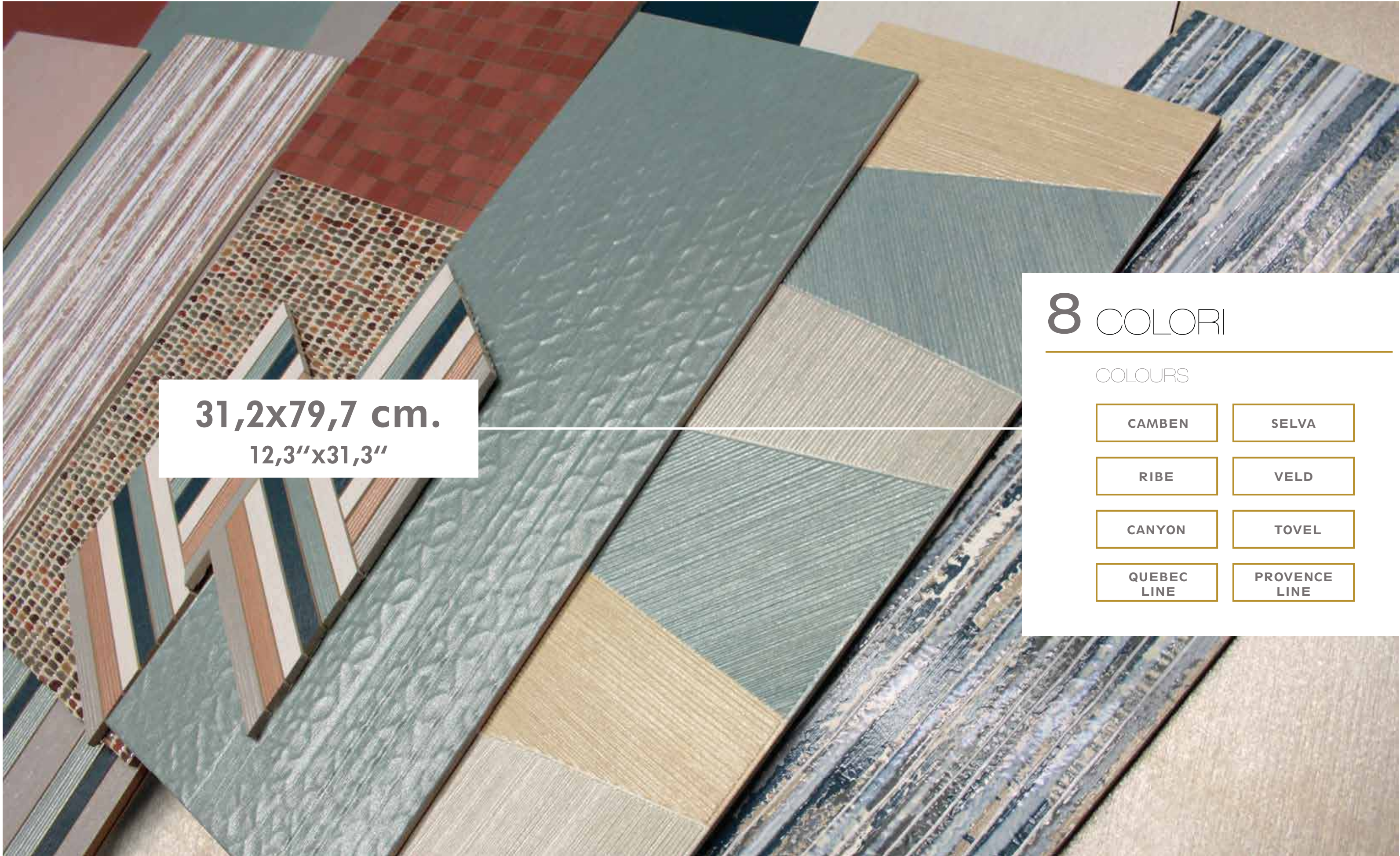
60x60 . 24"x24"
113121 SHINY BLACK
■ 105



60x60 . 24"x24"
113122 SHINY CAMBEN
■ 105

C5

V2



31,2x79,7 cm.
12,3"x31,3"

8 COLORI

COLOURS

CAMBEN

SELVA

RIBE

VELD

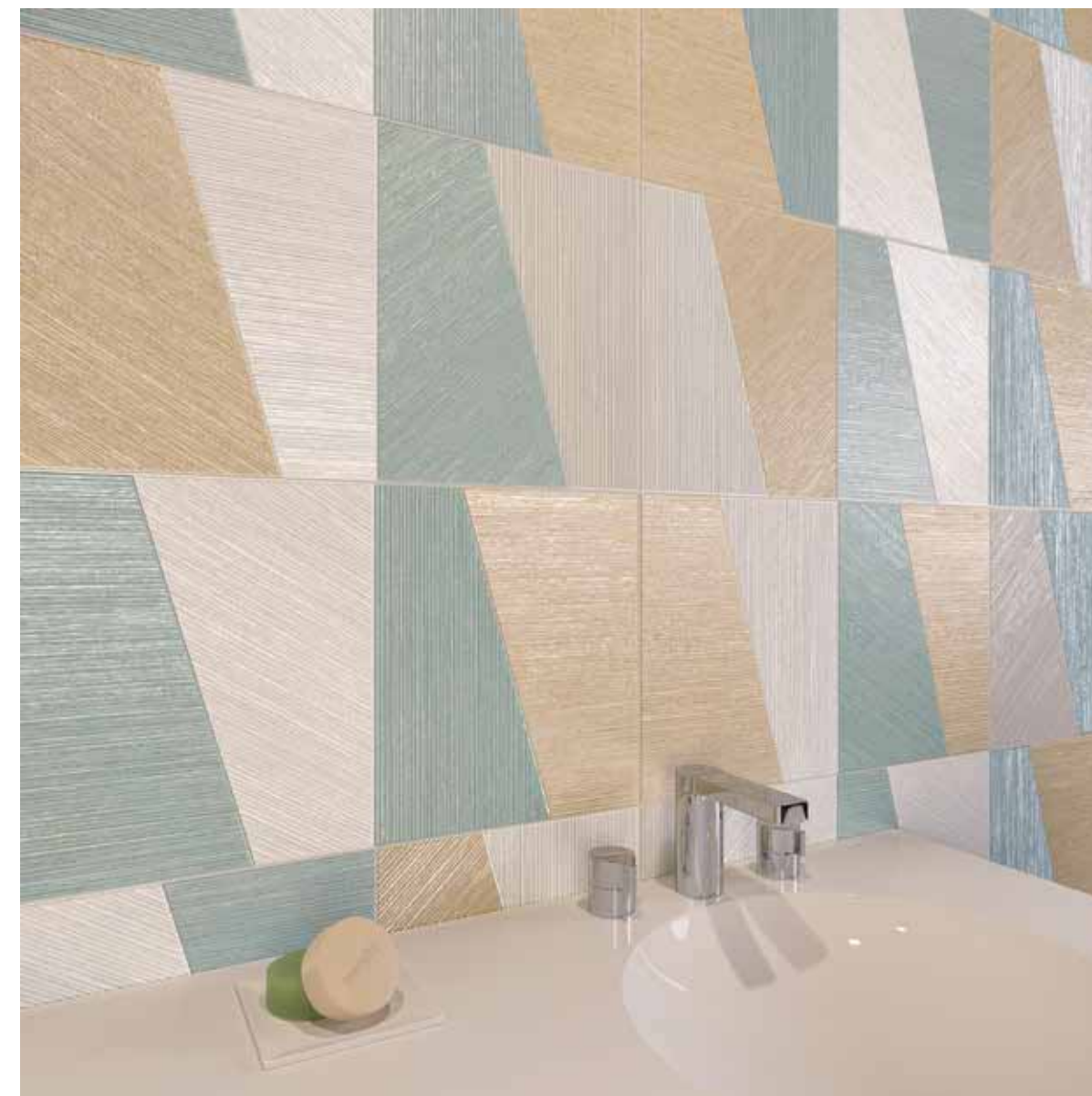
CANYON

TOVEL

QUEBEC
LINE

PROVENCE
LINE

31,2x79,7 cm.
12,3"x31,3"

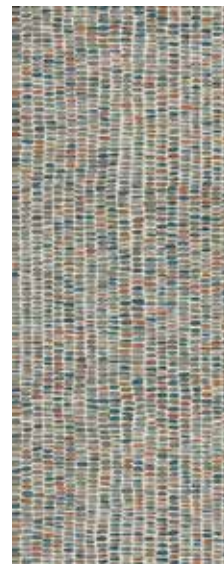




31,2x79,7 cm.
12,3"x31,3"

FASCIA
RAL
VELD

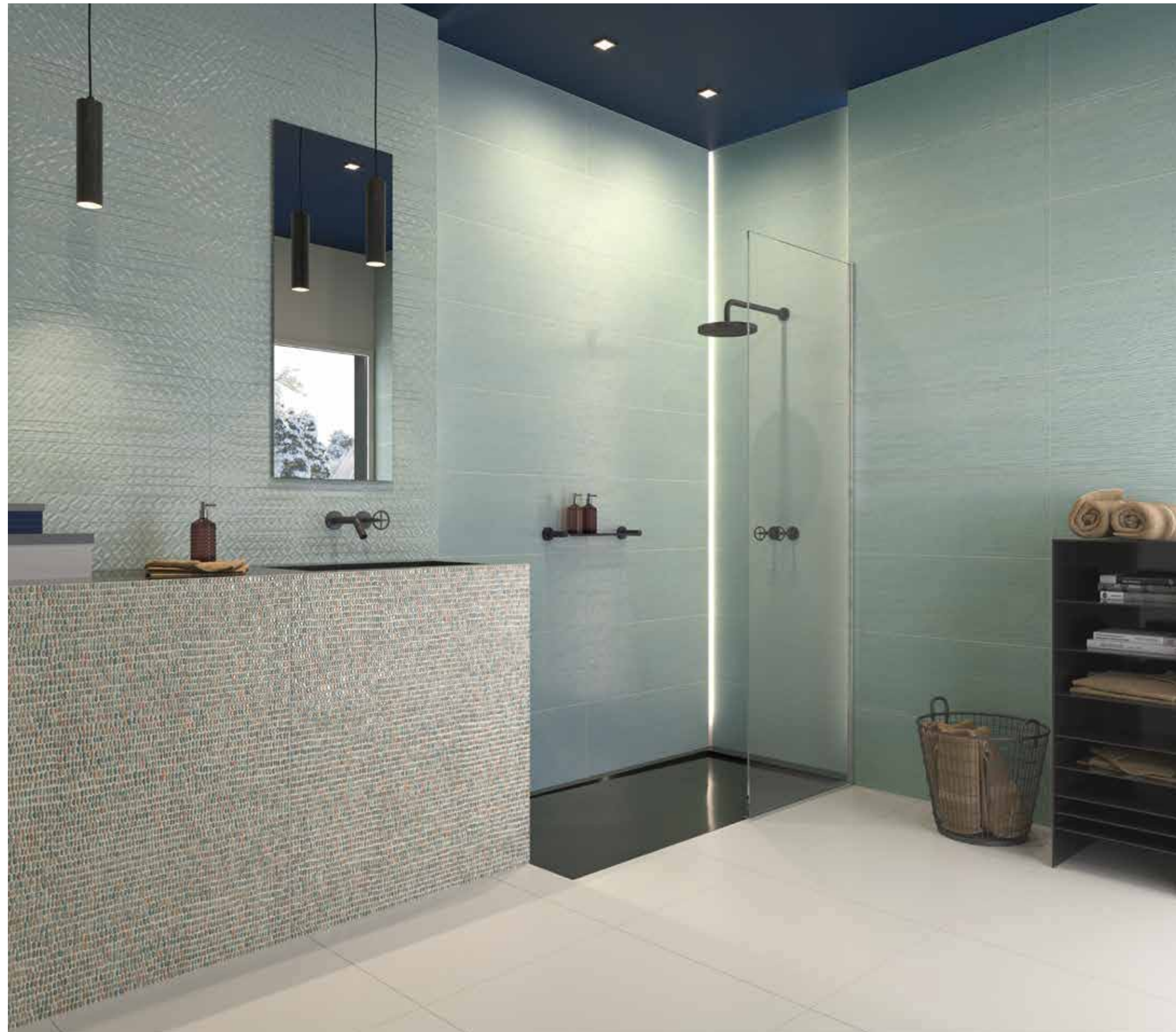
VELD



VELD
LINE



VELD
SIGN



31,2x79,7 cm.
12,3"x31,3"



**DECORI:
VALORE
AGGIUNTO** DECORATIONS:
ADDED VALUE



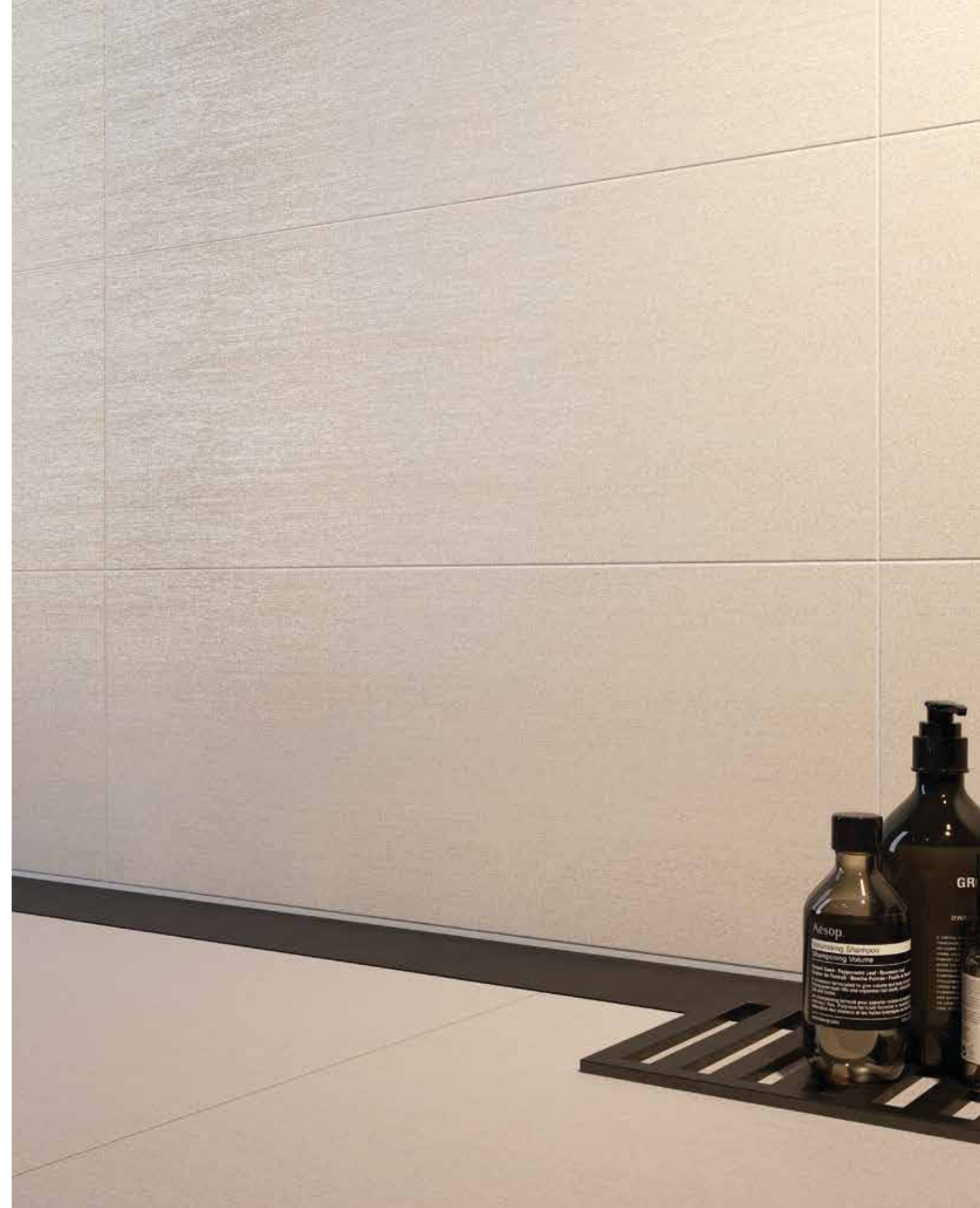
31,2x79,7 cm.
12,3"x31,3"

CAMBEN



QUEBEC
LINE

FASCIA
RAL
QUEBEC





Ambiente realizzato con - Setting realized with:

Camben 31,2x79,7 . 12,3"x31,3" \ Quebec Line 31,2x79,7 . 12,3"x31,3"

Fascia Ral Quebec 31,2x79,7 . 12,3"x31,3" / Pav. Shiny Camben 60x60 . 24"x24"

31,2x79,7 cm.
12,3"x31,3"

INTRECCIO DI FORME E COLORI PER OGNI SOLUZIONE

A MIXTURE
OF SHAPES
AND COLOURS
FOR EVERY
SOLUTION

31,2x79,7 cm.
12,3"x31,3"



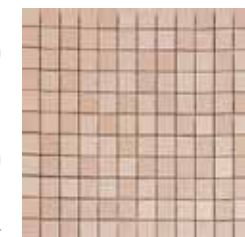
CAMBEN



FASCIA JOY
PROVENCE



PROVENCE
LINE



MOSAICO
DECÒ
PROVENCE





31,2x79,7 cm.
12,3"x31,3"

FASCIA
JOY
TOVEL



TOVEL



RIBE LINE



MOSAICO
BON TON





Ambiente realizzato con - Setting realized with:

Tovel 31,2x79,7 . 12,3"x31,3" \ Ribe Line 31,2x79,7 . 12,3"x31,3" \ Fascia Joy Tovel 31,2x79,7 . 12,3"x31,3"
Mosaico Bon Ton 31,2x31,2 . 12,3"x12,3" \ Pav. Shiny Grey 60x60 . 24"x24"

31,2x79,7 cm.
12,3"x31,3"

ACCOSTAMENTI AUDACI E ARMONICI

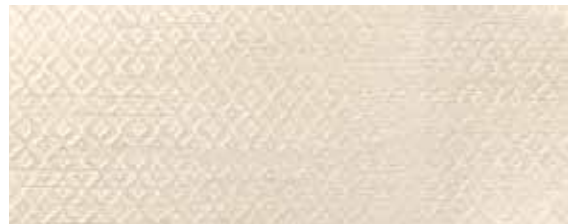
BOLD HARMONIOUS
COMBINATIONS

31,2x79,7 cm.
12,3"x31,3"

MOSAICO
SWING



CANYON



CAMBEN
SIGN



31,2x79,7 cm.
12,3"x31,3"

Ambiente realizzato con
Setting realized with:

Camben Sign 31,2x79,7 . 12,3"x31,3"

Canyon 31,2x79,7 . 12,3"x31,3"

Mosaico Swing 25,9x28,3 . 10,1"x11,1"

Pav. Shiny Camben 60x60 . 24"x24"

31,2x79,7 cm.
12,3"x31,3"



CAMBEN LINE

Ambiente realizzato con
Setting realized with:

Camben Line 31,2x79,7 . 12,3"x31,3"
Pav. Shiny Camben 60x60 . 24"x24"





31,2x79,7 . 12,3"x31,3"
111653 CAMBEN
■ 119



31,2x79,7 . 12,3"x31,3"
111669 CAMBEN LINE
■ 129



31,2x79,7 . 12,3"x31,3"
111671 CAMBEN SIGN
■ 129



31,2x79,7 . 12,3"x31,3"
111652 SELVA
■ 119



31,2x79,7 . 12,3"x31,3"
111626 SELVA LINE
■ 129



31,2x79,7 . 12,3"x31,3"
111670 RIBE
■ 119



31,2x79,7 . 12,3"x31,3"
111667 RIBE LINE
■ 129



31,2x79,7 . 12,3"x31,3"
112400 VELD
■ 119



31,2x79,7 . 12,3"x31,3"
111654 VELD LINE
■ 129



31,2x79,7 . 12,3"x31,3"
111668 VELD SIGN
■ 129



31,2x79,7 . 12,3"x31,3"
111666 TOVEL
■ 119



31,2x79,7 . 12,3"x31,3"
111665 CANYON
■ 119



31,2x79,7 . 12,3"x31,3"
111664 PROVENCE LINE
■ 129



31,2x79,7 . 12,3"x31,3"
111627 QUEBEC LINE
■ 129



31,2x79,7 . 12,3"x31,3"
111672 LUMA
■ 135

DECORI DECORS



31,2x79,7 . 12,3"x31,3"
113130 FASCIA RAL VELD
● 187



31,2x79,7 . 12,3"x31,3"
113133 FASCIA JOY TOVEL
● 151



31,2x79,7 . 12,3"x31,3"
113132 FASCIA RAL QUEBEC
● 187



31,2x79,7 . 12,3"x31,3"
113134 FASCIA JOY PROVENCE
● 151



32,5x32,5 . 12,7"x12,7"
113124 MOS. DECÒ SELVA (T. 144)
● 75



32,5x32,5 . 12,7"x12,7"
113125 MOS. DECÒ VELD (T. 144)
● 75



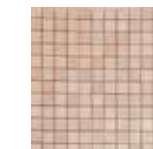
32,5x32,5 . 12,7"x12,7"
113129 MOS. DECÒ CANYON (T. 144)
● 75



32,5x32,5 . 12,7"x12,7"
113127 MOS. DECÒ QUEBEC (T. 144)
● 75



32,5x32,5 . 12,7"x12,7"
113126 MOS. DECÒ TOVEL (T. 144)
● 75



32,5x32,5 . 12,7"x12,7"
113128 MOS. DECÒ PROVENCE (T. 144)
● 75



25,9x28,3 . 10,1"x11,1"
113139 MOS. SWING
● 71

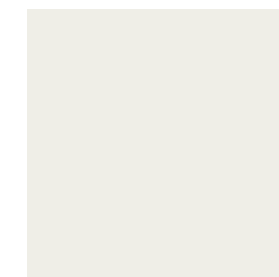


28,9x32,1 . 11,3"x12,6"
113141 MOS. RITMO
● 71



31,2x31,2 . 12,3"x12,3"
113138 MOS. BON TON
● 45

PAVIMENTI IN GRES FINE PORCELLANATO RETTIFICATI . RECTIFIED FINE PORCELAIN STONEWARE FLOOR TILES



60x60 . 24"x24"
113119 SHINY LIGHT
■ 105



60x60 . 24"x24"
113120 SHINY GREY
■ 105



60x60 . 24"x24"
113121 SHINY BLACK
■ 105

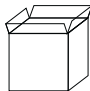
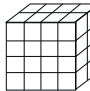


60x60 . 24"x24"
113122 SHINY CAMBEN
■ 105

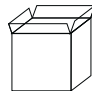
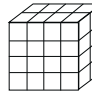
C5

V2

PESI E IMBALLI WALL TILE
RIVESTIMENTO WEIGHTS AND PACKAGING

		42,5x119,2	FASCIA 42,5x119,2	31,2x79,7	IDRO 20,3x35	MOS. DECÒ 32,5x32,5	FASCIA 31,2x79,7
	Pc.	2	2	5	6	5	2
	M ²	1,013	0,0132	1,243	0,426	0,528	0,4974
	Kg	19	19	20	1,243	11,125	7,92
	Colli boxes	24	-	40	-	-	-
	M ²	24,312	-	49,72	-	-	-
	Kg	456	-	800	-	-	-

PESI E IMBALLI FLOOR TILE
PAVIMENTO WEIGHTS AND PACKAGING

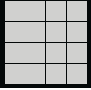
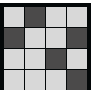
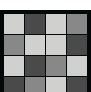
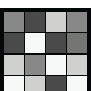
		60x60
	Pc.	3
	M ²	1,08
	Kg	22,5
	Colli boxes	40
	M ²	43,2
	Kg	900

PAVIMENTI IN GRES FINE PORCELLANATO FINE PORCELAIN STONWARE

Categorie d'impiego *Use classes*

- C1** Piastrelle da pavimento consigliate per calpestio leggero
Floor tiles recommended for light pounding
- C2** Piastrelle da pavimento consigliate per calpestio medio-leggero
Floor tiles recommended for medium-light pounding
- C3** Piastrelle da pavimento consigliate per calpestio medio
Floor tiles recommended for medium pounding
- C4** Piastrelle da pavimento consigliate per calpestio medio-pesante
Floor tiles recommended for medium-heavy pounding
- C5** Piastrelle da pavimento consigliate per calpestio intenso
Floor tiles recommended for heavy uses

Variazioni cromatiche *Colour variations*

-  V1 aspetto uniforme
even appearance
-  V2 lieve variazione
light variation
-  V3 media variazione
medium variation
-  V4 intensa variazione
strong variation

È indispensabile all'atto della posa, prelevare le piastrelle da più confezioni.

It is necessary to take the tiles from several different boxes when laying them.

NOTE NOTES

I prodotti possono essere modificati da Fincibec senza preavviso, respingendo ogni responsabilità su possibili danni diretti o indiretti causati da potenziali modifiche.
Fincibec reserves the right to modify its products without prior notice and cannot be held liable for direct or indirect damage caused by such modifications.

Verificare sempre la correttezza delle informazioni e dei dati relativi a codici, imballaggi e pesi, consultando il listino prezzi in vigore.
Always refer to the price list in force to ensure correct information and data on codes, packaging, and weight.

Le tonalità dei colori riportate nel catalogo sono indicative.
The colours shades, reported on the catalogue, are indicative.

CARATTERISTICHE TECNICHE MONOPOROSA - WHITE BODY - WEISSER SCHERBEN - PATE BLANCHE
PASTA BLANCA - БЕЛУЮ ПАСТУ
TECHNICAL SPECIFICATIONS - TECHNISCHE EIGENSCHAFTEN - CARACTÉRISTIQUES TECHNIQUES
CARACTERÍSTICAS TÉCNICAS - ТЕХНИЧЕСКИЕ ХАРАКТЕРИСТИКИ
STANDARDS : UNI EN 14411 ANNEX L - BIII / UNI EN ISO 13006 ANNEX L - BIII

CARATTERISTICHE TECNICHE TECHNICAL DATA TECHNISCHE DATEN CARACTERISTIQUES TECHNIQUES CARACTERÍSTICAS TÉCNICAS ТЕХНИЧЕСКИЕ ХАРАКТЕРИСТИКИ		TIPO DI PROVA STANDARD OF TEST NORME DU TEST TESTNORM TIPO DE PRUEBA ТИП ТЕСТА	VALORI PRESCRITTI DALLE NORME INTERNATIONAL STANDARDS INTERNATIONALE NORMWERTE VALEURS PREVUES PAR LES NORMES VALORES PREVISTOS POR LAS NORMAS ПРЕДУСМОТРЕННЫЕ СТАНДАРТОМ	VALORE MEDIO NAXOS NAXOS AVERAGE VALUE NAXOS MITTELWERT VALEURS MOYEN NAXOS VALOR MEDIO NAXOS СРЕДНЕЕ ЗНАЧЕНИЕ NAXOS
CARATTERISTICHE DIMENSIONALI - SIZE CHARACTERISTICS MASSEIGENSCHAFTEN - DETERMINATION DES CARACTERISTIQUES DIMENSIONNELLES CARACTERÍSTICAS DIMENSIONALES - РАЗМЕРНЫЕ ХАРАКТЕРИСТИКИ			REQUIREMENTS FOR NOMINAL SIZE N	
			7 cm ≤ N < 15 cm	N ≥ 15 cm
LATI - SIDES - SEITEN COTES - CANTOS РАЗМЕРЫ СТОРОН		EN ISO 10545-2	± 0,75 mm	± 0,5 % (± 2,0 mm)
SPESSORE THICKNESS - DICKE ÉPAISSEUR - ESPESOR ТОЛЩИНА		EN ISO 10545-2	± 0,5 mm	± 10 % (± 0,5 mm)
RETTILINEITÀ DEGLI SPIGOLI STRAIGHTNESS OF SIDES - GERADLINIGKEIT DER KANTEN RECTITUDE DES ARÊTES - RECTITUD DE LOS CANTOS - КОСОУГОЛЬНОСТЬ		EN ISO 10545-2	± 0,5 mm	± 0,3% (± 1,5 mm)
ORTOGONALITÀ RECTANGULARITY - RECHTWINKLIGKEIT PERPENDICULARITÉ - ORTOGONALIDAD КРЯВИЗНА СТОРОН		EN ISO 10545-2	± 0,75 mm	± 0,5% (± 2,0 mm)
PLANARITÀ SURFACE FLATNESS - EBENFLÄCHIGKEIT PLANEITÉ DE SURFACE - PLANEIDAD КРЯВИЗНА ЛИЦЕВОЙ ПОВЕРХНОСТИ		EN ISO 10545-2	CENTRE CURVATURE + 0,75 mm - 0,5 mm	+ 0,5% (+2,0 mm) - 0,3% (-1,5 mm)
			EDGE CURVATURE + 0,75 mm - 0,5 mm	+ 0,5% (+2,0 mm) - 0,3% (-1,5 mm)
			WARPAGE + 0,75 mm	± 0,5% (±2,0mm)
ASSORBIMENTO D'ACQUA WATER ABSORPTION - WASSERAUFNAHME ABSORPTION D'EAU - ABSORCIÓN DE AGUA ВОДОПОГЛОЩЕНИЕ		EN ISO 10545-3		E _B > 10%
RESISTENZA ALLA FLESSIONE FLEXION RESISTANCE - BIEGEFESTIGKEIT RESISTANCE A LA FLEXION - RESISTENCIA A LA FLEXIÓN ПРЕДЕЛ ПРОЧНОСТИ ПРИ ИЗГИБЕ		EN ISO 10545-4		> 600 N ₂ > 12 N/mm ²
RESISTENZA ALL'URTO IMPACT RESISTANCE - STOSSEFESTIGKEIT RESISTANCE AUX CHOCES - RESISTENCIA A LOS GOLPES УДАРОСТОЙКОСТЬ		EN ISO 10545-5		VALORE DICHIARATO DECLARED VALUE - ANGELEGENER WERT VALEUR DECLARÉE - VALOR DECLARADO ЗАЯВЛЕННОЕ ЗНАЧЕНИЕ
COEFFICIENTE DI DILATAZIONE TERMICA LINEARE COEFFICIENT OF LINEAR THERMAL-EXPANSION - LINEARER WÄRMEAUSSDEHNUNGSKOEFFIZIENT COEFFICIENT DE DILATATION THERMIQUE LINEAIRE - COEFFICIENTE DE DILATACION TERMICA LINEAL - КОЭФФИЦИЕНТ ЛИНЕЙНОГО ТЕРМИЧЕСКОГО РАСТЯЖЕНИЯ		EN ISO 10545-8		VALORE DICHIARATO DECLARED VALUE - ANGELEGENER WERT VALEUR DECLARÉE - VALOR DECLARADO ЗАЯВЛЕННОЕ ЗНАЧЕНИЕ
RESISTENZA AGLI SBALZI TERMICI RESISTANCE TO THERMAL SHOCKS - BESTÄNDIGKEIT GEGEN TEMPERATURSCHWANKUNGEN RESISTANCE AUX CHOCES THERMIQUES - RESISTENCIA A LOS CHOCOS TÈRMICOS СТОЙКОСТЬ К ПЕРЕПАДАМ ТЕМПЕРАТУРЫ		EN ISO 10545-9		TEST SUPERATO SECONDO EN ISO 10545-1 TEST PASSED ACCORDING TO - TEST BESTANDEN NACH - TEXTE DÉPASSÉ SELON - PRUEBA SUPERADA SEGUN - ИСПЫТАНИЕ ПРОЙДЕНО В СООТВЕТСТВИИ С
DILATAZIONE ALL'UMIDITÀ (IN MM/M) MOISTURE EXPANSION (IN MM/M) - FEUCHTIGKEITSBEDINGTE AUSDEHNUNG (IN MM/M) DILATACION A L'UMIDITE (EN MM/M) - DILATACION CON LA HUMEDAD (EN MM/M) ВЛАЖНОСТНОЕ РАСТЯЖЕНИЕ (В MM/M)		EN ISO 10545-10		VALORE DICHIARATO DECLARED VALUE - ANGELEGENER WERT VALEUR DECLARÉE - VALOR DECLARADO ЗАЯВЛЕННОЕ ЗНАЧЕНИЕ
RESISTENZA AI PRODOTTI CHIMICI USO DOMESTICO E ADDITIVI PER PISCINA RESISTANCE TO HOUSEHOLD AND SWIMMING POOL CHEMICAL PRODUCTS - RBSTÄNDIGKEIT GEGEN HAUSHALTSCHENIKALIEN UND ZUSATZSTOFFE FÜR SWIMMINGPOOLS - RESISTANCE A BASSES CONCENTRATIONS D'ACIDES ET ALCALIS - RESISTENCIA A BAJAS CONCENTRACIONES DE ACIDOS Y ALCALIS - СТОЙКОСТЬ К ДЕЙСТВИЮ БЫТОВЫХ ХИМИЧЕСКИХ СРЕДСТВ, ДОБАВКАМ В БАССЕЙНЫ		EN ISO 10545-13		GB MIN
RESISTENZA A BASSE CONCENTRAZIONI DI ACIDI E ALCALI RESISTANCE TO LOW CONCENTRATIONS OF ACIDS AND ALKALI - BESTÄNDIGKEIT BEI NIEDRIGEN KONZENTRATIONEN VON SAUREN UND LAUGEN - RESISTANCE À BASSES CONCENTRATIONS D'ACIDES ET ALCALIS - RESISTENCIA A BAJAS CONCENTRACIONES DE ACIDOS Y ALCALIS - СТОЙКОСТЬ К ДЕЙСТВИЮ НИЗКИХ КОНЦЕНТРАЦИЙ КИСЛОТ И ЩЕЛОЧЕЙ		EN ISO 10545-13		VALORE DICHIARATO DECLARED VALUE - ANGELEGENER WERT VALEUR DECLARÉE - VALOR DECLARADO ЗАЯВЛЕННОЕ ЗНАЧЕНИЕ
RESISTENZA AD ALTE CONCENTRAZIONI DI ACIDI E ALCALI RESISTANCE TO HIGH CONCENTRATIONS OF ACIDS AND ALKALI - BESTÄNDIGKEIT BEI HOHEN KONZENTRATIONEN VON SAUREN UND LAUGEN - RESISTANCE À HAUTES CONCENTRATIONS D'ACIDES ET ALCALIS - RESISTENCIA A ALTAS CONCENTRACIONES DE ACIDOS Y ALCALIS - СТОЙКОСТЬ К ДЕЙСТВИЮ ВЫСОКИХ КОНЦЕНТРАЦИЙ КИСЛОТ И ЩЕЛОЧЕЙ		EN ISO 10545-13		VALORE DICHIARATO DECLARED VALUE - ANGELEGENER WERT VALEUR DECLARÉE - VALOR DECLARADO ЗАЯВЛЕННОЕ ЗНАЧЕНИЕ
RESISTENZA ALLE MACCHIE RESISTANCE TO STAINS - FLECKENBESTÄNDIGKEIT RESISTANCE AUX TACHES - RESISTENCIA A LAS MANCHAS УСТОЙЧИВОСТЬ К ПЯТНООБРАЗОВАНИЮ		EN ISO 10545-14		CLASSE 3 MIN
CESSIONE DI PIOMBO E CADMIO LEAD AND CADMIUM DISCHARGE - ABGABE VON BLEI UND CADMIUM PERTE DE PLOMB ET CADMIUM - CESION DE PLOMO Y CADMIO ВЫДЕЛЕНИЕ СВИНЦА И КАДМИЯ		EN ISO 10545-15		VALORE DICHIARATO DECLARED VALUE - ANGELEGENER WERT VALEUR DECLARÉE - VALOR DECLARADO ЗАЯВЛЕННОЕ ЗНАЧЕНИЕ

PER I CERTIFICATI SPECIFICI, E VALORI PUNTUALI, CONTATTARE FINCIBEC SPA - FOR SPECIFIC CERTIFICATES AND DATA, CONTACT FINCIBEC S.P.A. - FÜR SPEZIELLE ZERTIFIKATE UND PUNKTWERTE, FINCIBEC S.P.A. KONTAKTIEREN - POUR LES CERTIFICATS SPECIFIQUES ET LES VALEURS PONCTUELLES, CONTACTER FINCIBEC S.P.A. - PARA LOS CERTIFICADOS ESPECIFICOS Y LOS VALORES CONCRETOS, CONTACTE CON FINCIBEC S.P.A. - ВО ВОПРОСАХ СПЕЦИАЛЬНЫХ СЕРТИФИКАТОВ И ПОКАЗАТЕЛЕЙ СВЯЖИТЕСЬ С FINCIBEC SPA.

ESCLUSO PEZZI SPECIALI ED ELEMENTI DECORATIVI
WITH THE EXCEPTION OF SPECIAL PIECES AND DECORS - A L'EXCEPTION DE PIÈCES SPÉCIALES ET ÉLÉMENTS DÉCORATIFS - AUSSCHLIEßLICH FORMSTÜCKE UND DEKORTEILE - EXCLUIDO PIEZAS ESPECIALES Y ELEMENTOS DECORATIVOS

CARATTERISTICHE TECNICHE / GRES FINE PORCELLANATO COLORATO IN MASSA
TECHNICAL SPECIFICATIONS / FULL-BODY COLOURED PORCELAIN STONEWARE - TECHNISCHE EIGENSCHAFTEN
/ DURCHGEFARBTES FEINSTEINZEUG - CARACTERISTIQUES TECHNIQUES / GRES FIN CERAME COLORE EN MASSE
CARACTERISTICAS TECNICAS / GRES FINO PORCELANICO TENIDO EN MASA - ТЕХНИЧЕСКИЕ ХАРАКТЕРИСТИКИ /
МЕЛКОЗЕРНИСТЫЙ КЕРАМОГРАНИТ, ОКРАШЕННЫЙ В МАССЕ
STANDARDS : UNI EN 14411 ANNEX G - Bla / UNI EN ISO 13006 ANNEX G - Bla

	CARATTERISTICHE TECNICHE TECHNICAL DATA TECHNISCHE DATEN CARACTERISTIQUES TECHNIQUES CARACTERISTICAS TECNICAS ТЕХНИЧЕСКИЕ ХАРАКТЕРИСТИКИ	TIPO DI PROVA STANDARD OF TEST NORME DU TEST TESTINORM TIPO DE PRUEBA ТИП ТЕСТА	VALORI PRESCRITTI DALLE NORME INTERNATIONAL STANDARDS INTERNATIONALE NORMWERTE VALEURS PREVUES PAR LES NORMES VALORES PREVISTOS POR LAS NORMAS ПРЕДУСМОТРЕННЫЕ СТАНДАРТОМ		VALORE MEDIO NAXOS NAXOS AVERAGE VALUE NAXOS MITTELWERT VALEURS MOYEN NAXOS VALOR MEDIO NAXOS СРЕДНЕЕ ЗНАЧЕНИЕ NAXOS
			REQUIREMENTS FOR NOMINAL SIZE N		
	CARATTERISTICHE DIMENSIONALI - SIZE CHARACTERISTICS MASSEIGENSCHAFTEN - DETERMINATION DES CARACTERISTIQUES DIMENSIONNELLES CARACTERISTICAS DIMENSIONALES - РАЗМЕРНЫЕ ХАРАКТЕРИСТИКИ		7 cm ≤ N ≤ 15 cm	N ≥ 15 cm	NAT
	LATI - SIDES - SEITEN COTES - CANTOS РАЗМЕРЫ СТОРОН	EN ISO 10545-2	± 0,9 mm	± 0,6% (± 2,0 mm)	CONFORME COMPLYING - ERFÜLLT CONFORME - CONFORME СООТВЕТСТВУЕТ
	SPESSORE THICKNESS - DICKE ÉPAISSEUR - ESPESOR ТОЛЩИНА	EN ISO 10545-2	± 0,5 mm	± 5,0% (± 0,5 mm)	CONFORME COMPLYING - ERFÜLLT CONFORME - CONFORME СООТВЕТСТВУЕТ
	RETTILINEITÀ DEGLI SPIGOLI STRAIGHTNESS OF SIDES - GERADLINIGKEIT DER KANTEN RECTITUDE DES ARETES - RECTIDUD DE LOS CANTOS - КОСОУГОЛЬНОСТЬ	EN ISO 10545-2	± 0,75 mm	± 0,5% (± 1,5 mm)	CONFORME COMPLYING - ERFÜLLT CONFORME - CONFORME СООТВЕТСТВУЕТ
	ORTOGONALITÀ RECTANGULARITY - RECHTWINKLIGKEIT PERPENDICULARITÉ - ORTOGONALIDAD КРИВИЗНА СТОРОН	EN ISO 10545-2	± 0,75 mm	± 0,5% (± 2 mm)	CONFORME COMPLYING - ERFÜLLT CONFORME - CONFORME СООТВЕТСТВУЕТ
	PLANARITÀ SURFACE FLATNESS - EBENFLÄCHIGKEIT PLANEITÉ DE SURFACE - PLANEIDAD КРИВИЗНА ЛИЦЕВОЙ ПОВЕРХНОСТИ	EN ISO 10545-2	± 0,75 mm	± 0,5% (± 2,0 mm)	CONFORME COMPLYING - ERFÜLLT CONFORME - CONFORME СООТВЕТСТВУЕТ
	ASSORBIMENTO D'ACQUA WATER ABSORPTION - WASSERAUFNAHME ABSORPTION D'EAU - ABSORCIÓN DE AGUA ВОДОПОГЛОЩЕНИЕ	EN ISO 10545-3	≤ 0,5 %		≤ 0,1 %
	RESISTENZA ALLA FLESSIONE FLEXION RESISTANCE - BIEGEFESTIGKEIT RESISTANCE A LA FLEXION - RESISTENCIA A LA FLEXION ПРЕДЕЛ ПРОЧНОСТИ ПРИ ИЗГИБЕ	EN ISO 10545-4	S ≥ 1.300 N R ≥ 35 N/mm ² .		CONFORME COMPLYING - ERFÜLLT CONFORME - CONFORME СООТВЕТСТВУЕТ
	RESISTENZA ALL'URTO IMPACT RESISTANCE - STOSSFESTIGKEIT RESISTANCE AUX CHOCES - RESISTENCIA A LOS GOLPES УДАРОСТОЙКОСТЬ	EN ISO 10545-5	VALORE DICHIARATO DECLARED VALUE - ANGEGBENER WERT VALEUR DECLARÉE - VALOR DECLARADO ЗАЯВЛЕННОЕ ЗНАЧЕНИЕ		> 0,80
	COEFFICIENTE DI DILATAZIONE TERMICA LINEARE COEFFICIENT OF LINEAR THERMAL EXPANSION - LINEARER WÄRMEAUDEHNUNGSKOEFFIZIENT COEFFICIENT DE DILATATION THERMIQUE LINEAIRE - COEFICIENTE DE DILATACION TERMICA LINEAL - КОЭФФИЦИЕНТ ЛИНЕЙНОГО ТЕРМИЧЕСКОГО РАСТЯЖЕНИЯ	EN ISO 10545-8	VALORE DICHIARATO DECLARED VALUE - ANGEGBENER WERT VALEUR DECLARÉE - VALOR DECLARADO ЗАЯВЛЕННОЕ ЗНАЧЕНИЕ		α = 6,7x10 ⁻⁶ /C°
	RESISTENZA AGLI SBALZI TERMICI RESISTANCE TO THERMAL SHOCKS - BESTÄNDIGKEIT GEGEN TEMPERATURSCHWANKUNGEN RESISTANCE AUX CHOCES THERMIQUES - RESISTENCIA A LOS CHOQUES TERMICOS СТОЙКОСТЬ К ПЕРЕПАДАМ ТЕМПЕРАТУРЫ	EN ISO 10545-9	TEST SUPERATO SECONDO EN ISO 10545-1 TEST PASSED ACCORDING TO TEST BESTANDEN NACH TEXTE DÉPASSE SELON PRUEBA SUPERADA SEGUN ИСПЫТАНИЕ ПРОЙДЕНО В СООТВЕТСТВИИ С		NESSUN DANNO NO DAMAGE - KEIN SCHADEN AUCUN DOMMAGE - NINGUN DANO БЕЗ ПОВРЕЖДЕНИЙ
	DILATAZIONE ALL'UMIDITÀ (IN MM/M) MOISTURE EXPANSION (IN MM/M) - FEUCHTIGKEITSBEDINGTE AUSDEHNUNG (IN MM/M) DILATATION À L'HUMIDITÉ (EN MM/M) - DILATACION CON LA HUMEDAD (EN MM/M) ВЛАЖНОСТНОЕ РАСТЯЖЕНИЕ (В MM/M)	EN ISO 10545-10	VALORE DICHIARATO DECLARED VALUE - ANGEGBENER WERT VALEUR DECLARÉE - VALOR DECLARADO ЗАЯВЛЕННОЕ ЗНАЧЕНИЕ		MAX 0,1 mm / m
	RESISTENZA AL GELO FROST RESISTANCE - FROSTBESTÄNDIGKEIT RESISTANCE AU GEL - RESISTENCIA AL HIELO МОРОЗОСТОЙКОСТЬ	EN ISO 10545-12	TEST SUPERATO SECONDO EN ISO 10545-1 TEST PASSED ACCORDING TO TEST BESTANDEN NACH TEXTE DÉPASSE SELON PRUEBA SUPERADA SEGUN ИСПЫТАНИЕ ПРОЙДЕНО В СООТВЕТСТВИИ С		NESSUN DANNO NO DAMAGE - KEIN SCHADEN AUCUN DOMMAGE - NINGUN DANO БЕЗ ПОВРЕЖДЕНИЙ
	RESISTENZA AI PRODOTTI CHIMICI USO DOMESTICO E ADDITIVI PER PISCINA RESISTANCE TO HOUSEHOLD AND SWIMMING POOL CHEMICAL PRODUCTS - RBESTÄNDIGKEIT GEGEN HAUSHALTSCHEMIKALIEN UND ZUSATZSTOFFE FÜR SWIMMINGPOOLS - RESISTENCIA AUX PRODUITS CHIMIQUES USAGE DOMESTIQUE ET ADDITIFS POUR PISCINE - RESISTENCIA A LOS PRODUCTOS QUIMICOS DE USO DOMESTICO Y ADITIVOS PARA PISCINA - СТОЙКОСТЬ К ДЕЙСТВИЮ БЫТОВЫХ ХИМИЧЕСКИХ СРЕДСТВ, ДОБАВКАМ В БАССЕЙНЫ	EN ISO 10545-13	VALORE DICHIARATO DECLARED VALUE - ANGEGBENER WERT VALEUR DECLARÉE - VALOR DECLARADO ЗАЯВЛЕННОЕ ЗНАЧЕНИЕ		B / MIN CONFORME COMPLYING - ERFÜLLT CONFORME - CONFORME СООТВЕТСТВУЕТ
	RESISTENZA A BASSE CONCENTRAZIONI DI ACIDI E ALCALI RESISTANCE TO LOW CONCENTRATIONS OF ACIDS AND ALKALI - BESTÄNDIGKEIT BEI NIEDRIGEN KONZENTRATIONEN VON SAUREN UND LAUGEN - RESISTANCE À BASSES CONCENTRATIONS D'ACIDES ET ALCALIS - RESISTENCIA A BAJAS CONCENTRACIONES DE ACIDOS Y ALCALIS - СТОЙКОСТЬ К ДЕЙСТВИЮ НИЗКИХ КОНЦЕНТРАЦИЙ КИСЛОТ И ЩЕЛОЧЕЙ	EN ISO 10545-13	VALORE DICHIARATO DECLARED VALUE - ANGEGBENER WERT VALEUR DECLARÉE - VALOR DECLARADO ЗАЯВЛЕННОЕ ЗНАЧЕНИЕ		CONFORME COMPLYING - ERFÜLLT CONFORME - CONFORME СООТВЕТСТВУЕТ
	RESISTENZA AD ALTE CONCENTRAZIONI DI ACIDI E ALCALI RESISTANCE TO HIGH CONCENTRATIONS OF ACIDS AND ALKALI - BESTÄNDIGKEIT BEI HOHEN KONZENTRATIONEN VON SAUREN UND LAUGEN - RESISTANCE À HAUTES CONCENTRATIONS D'ACIDES ET ALCALIS - RESISTENCIA A ALTAS CONCENTRACIONES DE ACIDOS Y ALCALIS - СТОЙКОСТЬ К ДЕЙСТВИЮ ВЫСОКИХ КОНЦЕНТРАЦИЙ КИСЛОТ И ЩЕЛОЧЕЙ	EN ISO 10545-13	VALORE DICHIARATO DECLARED VALUE - ANGEGBENER WERT VALEUR DECLARÉE - VALOR DECLARADO ЗАЯВЛЕННОЕ ЗНАЧЕНИЕ		CONFORME COMPLYING - ERFÜLLT CONFORME - CONFORME СООТВЕТСТВУЕТ
	RESISTENZA ALLE MACCHIE RESISTANCE TO STAINS - FLECKENBESTÄNDIGKEIT RESISTANCE AUX TACHES - RESISTENCIA A LAS MANCHAS УСТОЙЧИВОСТЬ К ПЯТНООБРАЗОВАНИЮ	EN ISO 10545-14	VALORE DICHIARATO DECLARED VALUE - ANGEGBENER WERT VALEUR DECLARÉE - VALOR DECLARADO ЗАЯВЛЕННОЕ ЗНАЧЕНИЕ		CONFORME COMPLYING - ERFÜLLT CONFORME - CONFORME СООТВЕТСТВУЕТ
	CESSIONE DI PIOMBO E CADMIO LEAD AND CADMIUM DISCHARGE - ABGABE VON BLEI UND CADMIUM PERTE DE PLOMB ET CADMIUM - CESIÓN DE PLOMO Y CADMIO ВЫДЕЛЕНИЕ СВИНЦА И КАДМИЯ	EN ISO 10545-15	VALORE DICHIARATO DECLARED VALUE - ANGEGBENER WERT VALEUR DECLARÉE - VALOR DECLARADO ЗАЯВЛЕННОЕ ЗНАЧЕНИЕ		< AL LIMITE DI RILEVAMENTO < THAN INSTRUMENT LIMIT < UNMESSBARES WERT < LIMITE DE L'INSTRUMENT < LIMITE DEL INSTRUMENTO < НА ПРЕДЕЛЕ ОПРЕДЕЛИМОСТИ

PER I CERTIFICATI SPECIFICI, E VALORI PUNTUALI, CONTATTARE FINCIBEC SPA - FOR SPECIFIC CERTIFICATES AND DATA, CONTACT FINCIBEC S.P.A - FÜR SPEZIELLE ZERTIFIKATE UND PUNKTWERTE, FINCIBEC S.P.A. KONTAKTIEREN - POUR LES CERTIFICATS SPECIFIQUES ET LES VALEURS PONCTUELLES, CONTACTER FINCIBEC S.P.A - PARA LOS CERTIFICADOS ESPECIFICOS Y LOS VALORES CONCRETOS, CONTACTE CON FINCIBEC S.P.A - ВО ВОПРОСАХ СПЕЦИАЛЬНЫХ СЕРТИФИКАТОВ И ПОКАЗАТЕЛЕЙ СВЯЖИТЕСЬ С FINCIBEC SPA.

ESCLUSO PEZZI SPECIALI ED ELEMENTI DECORATIVI
 WITH THE EXCEPTION OF SPECIAL PIECES AND DECORS - A L'EXCEPTION DE PIÈCES SPÉCIALES ET ÉLÉMENTS DÉCORATIFS - AUSSCHLIEßLICH FORMSTÜCKE UND DEKORTEILE - EXCLUIDO PIEZAS ESPECIALES Y ELEMENTOS DECORATIVOS

★ ★ ★ ★ ★
NAXOS[®]
C E R A M I C H E
F I N C I B E C G R O U P



NAXOS
Strada Statale 569, 169
41014 - Solignano (Mo) Italy

Tel. +39 059 748811 | Fax +39 059 797376
info@naxos-ceramica.it | www.naxos-ceramica.it

FINCIBEC S.p.A.
Sede legale: Via Valle d'Aosta, 47
41049 Sassuolo (Mo) Italy
Gruppo Fire S.R.L.

FINCIBEC USA INC.
240 Kent Ave K3/B36
Brooklyn N.Y. 11249 USA
Ph.+1 917-969-4916
info@fincibecusa.com



Fincibec S.p.A è socio di:

