



# SLATE

## The organic forms of slate in its pure state.

As formas orgânicas da ardósia no seu estado puro.  
Les formes organiques de l'ardoise à l'état pur.  
Die organischen Formen der Schiefer in reinem Zustand.  
Las formas orgánicas de la pizarra en su estado puro.  
Органическая форма известняка в своём чистом проявлении.

LEFT WALL:  
SLATE BRANCO 30X60 CM MY30

RIGHT WALL:  
SLATE ANTRACITE 30X60 CM MY31

FLOOR:  
SLATE ANTRACITE 46X46 CM MT31





**WALL & FLOOR / PORCELAIN TILES**  
 Revestimento e Pavimento / Porcelanato . Revêtements & Carreaux de Sol / Grès Cérame  
 Wand & Boden / Feinsteinzeug . Revestimiento y Pavimento / Porcelánico  
 Настенная плитка и Плитка для пола / Керамогранит

30x60cm / 11.8"x23.6"  
 46x46cm / 18.1"x18.1"



SLATE BEGE 46X46 CM MT35

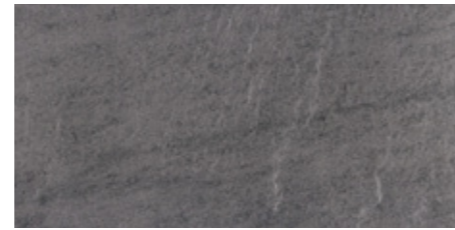
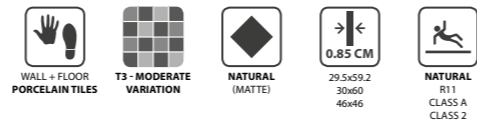


WALL:  
 SLATE ANTRACITE 30X60 CM MY31  
 FLOOR:  
 SLATE ANTRACITE 46X46 CM MT31



30x60cm / 11.8"x23.6"  
46x46cm / 18.1"x18.1"

30x60cm / 11.8"x23.6"  
46x46cm / 18.1"x18.1"



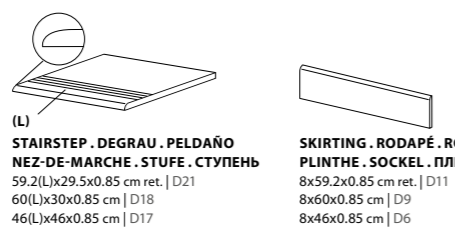
**BRANCO**  
29.5x59.2x0.85 cm ret.  
30x60x0.85 cm  
MY30R | C24  
MY30 | C18

**BEGE**  
29.5x59.2x0.85 cm ret.  
30x60x0.85 cm  
MY35R | C24  
MY35 | C18

**ANTRACITE**  
29.5x59.2x0.85 cm ret.  
30x60x0.85 cm  
MY31R | C24  
MY31 | C18

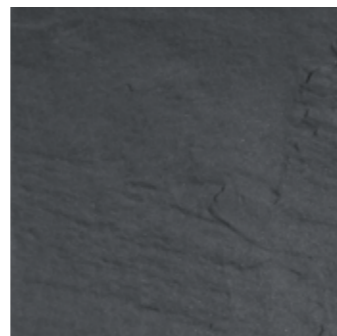
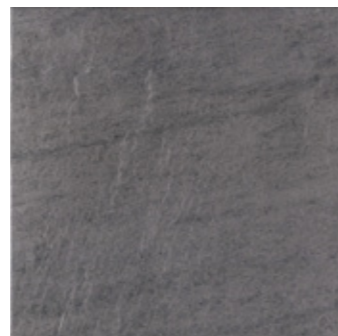


**GRAFITE**  
29.5x59.2x0.85 cm ret.  
30x60x0.85 cm  
MY32R | C24  
MY32 | C18



**STAIRSTEP . DEGRAU . PELDAÑO  
NEZ-DE-MARCHE . STUFE . СТУПЕНЬ**  
59.2(L)x29.5x0.85 cm ret. | D21  
60(L)x30x0.85 cm | D18  
46(L)x46x0.85 cm | D17

**SKIRTING . RODAPÉ . RODAPIÉ  
PLINTHE . SOCKEL . ПЛИНТУС**  
8x59.2x0.85 cm ret. | D11  
8x60x0.85 cm | D9  
8x46x0.85 cm | D6

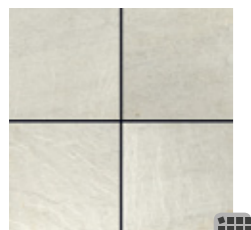


**BRANCO**  
46x46x0.85 cm  
MT30 | C17

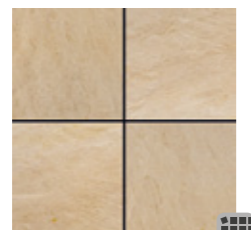
**BEGE**  
46x46x0.85 cm  
MT35 | C17

**ANTRACITE**  
46x46x0.85 cm  
MT31 | C17

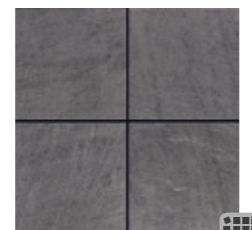
**GRAFITE**  
46x46x0.85 cm  
MT32 | C17



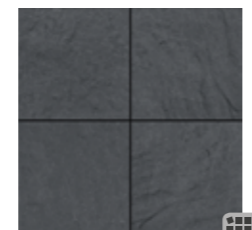
**MOSAIC SLATE BRANCO**  
**(14.6X14.6 cm)** (PIECE)  
29.5x29.5x0.85 cm  
DMY30G | D23



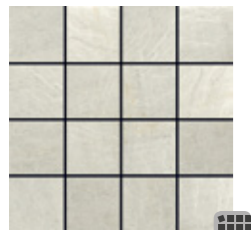
**MOSAIC SLATE BEGE**  
**(14.6X14.6 cm)** (PIECE)  
29.5x29.5x0.85 cm  
DMY35G | D23



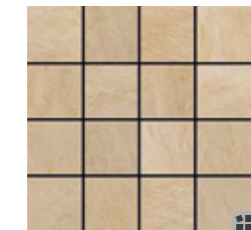
**MOSAIC SLATE ANTRACITE**  
**(14.6X14.6 cm)** (PIECE)  
29.5x29.5x0.85 cm  
DMY31G | D23



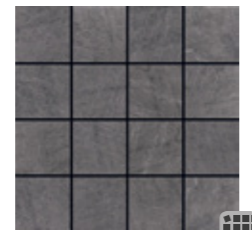
**MOSAIC SLATE GRAFITE**  
**(14.6X14.6 cm)** (PIECE)  
29.5x29.5x0.85 cm  
DMY32G | D23



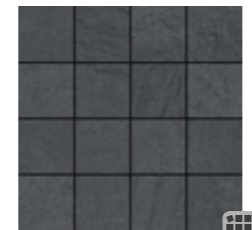
**MOSAIC SLATE BRANCO**  
**(7.2X7.2 cm)** (PIECE)  
29.5x29.5x0.85 cm  
DMY30P | D26



**MOSAIC SLATE BEGE**  
**(7.2X7.2 cm)** (PIECE)  
29.5x29.5x0.85 cm  
DMY35P | D26



**MOSAIC SLATE ANTRACITE**  
**(7.2X7.2 cm)** (PIECE)  
29.5x29.5x0.85 cm  
DMY31P | D26



**MOSAIC SLATE GRAFITE**  
**(7.2X7.2 cm)** (PIECE)  
29.5x29.5x0.85 cm  
DMY32P | D26



WALL:  
SLATE ANTRACITE 30X60 CM MY31

FLOOR:  
SLATE ANTRACITE 46X46 CM MT31

| SIZES (CM)          | PIECES / BOX                   | SQM / BOX                                       | WEIGHT / BOX                   | BOX / PALLET                      | SQM / PALLET                                       | WEIGHT / PALLET                   |
|---------------------|--------------------------------|---|--------------------------------|-----------------------------------|--|-----------------------------------|
| Dimensão . Format   | Peças / Caixa . Pièces / Boîte | M <sup>2</sup> / Caixa . M <sup>2</sup> / Boîte | Peso / Caixa . Poids / Boîte   | Caixa / Paleta . Boîte / Palette  | M <sup>2</sup> / Paleta . M <sup>2</sup> / Palette | Peso / Paleta . Poids / Palette   |
| Maße . Formato      | Stück / Karton . Piezas / Caja | M <sup>2</sup> / Karton . M <sup>2</sup> / Caja | Gewicht / Karton . Peso / Caja | Kartons / Palette . Caja / Pallet | M <sup>2</sup> / Palette . M <sup>2</sup> / Pallet | Gewicht / Palette . Peso / Pallet |
| Размеры             | Штук / Коробка                 | Кв.м / Коробка                                  | Вес / Коробка                  | Коробок / Поддон                  | Кв.м / Поддон                                      | Вес / Поддон                      |
| 29.5x59.2x0.85 ret. | 7                              | 1.220   | 22.60                          | 40                                | 48.800   | 924                               |
| 30x60x0.85          | 7                              | 1.260   | 23.40                          | 40                                | 50.400   | 956                               |
| 46x46x0.85          | 5                              | 1.060   | 19.80                          | 36                                | 38.160   | 733                               |