



Numero di registrazione  
IT/21/07

# soft *Look*



  
**NovaBell**<sup>®</sup>  
Ceramiche Gruppo Bellei



# NovaBell ecosystem:

**40% DI MATERIE RICICLATE:**

**QUALITÀ E DESIGN RISPETTANO L'AMBIENTE.**

NovaBell è da sempre sensibile ai valori etici di rispetto per l'ambiente e di attenzione alla sicurezza e salute dei lavoratori.

Il marchio "NovaBell ecosystem" identifica il programma aziendale di sviluppo sostenibile, che si concretizza nell'attenta e continua ricerca per la riduzione dei rifiuti, nel riutilizzo nel ciclo produttivo dei materiali di scarto, nel riciclaggio e nella minimizzazione dei consumi energetici e delle risorse, attraverso una costante attenzione ed un continuo aggiornamento degli impianti.

NovaBell richiede un comportamento altrettanto responsabile ai propri fornitori di materie prime o di semilavorati.

Il marchio "NovaBell ecosystem" identifica in particolare i prodotti NovaBell che contengono minimo il 40% di materiali riciclati in peso e che quindi possono definirsi piastrelle ecologiche.

Grazie al controllo sistematico di tutte le fasi del processo, i materiali rispettano gli standard qualitativi delle normative internazionali.

## NovaBell ecosystem

**40% RECYCLED MATERIALS: ENVIRONMENT-FRIENDLY QUALITY AND DESIGN.**

NovaBell has always been responsive to the ethical values of environmental protection and a focus on workers' health and safety.

The "NovaBell ecosystem" brand denotes the firm's sustainable development programme, expressed through continuous, meticulous research into the reduction of waste, the reuse of waste materials in the production cycle, recycling, and the minimisation of the consumption of energy and resources, achieved by means of constant awareness and ongoing modernisation of plants. NovaBell requires the same responsible behaviour of its suppliers of raw and unfinished materials.

Specifically, the "NovaBell ecosystem" brand is used on NovaBell products which contain at least 40% recycled materials, and which can therefore truly claim to be environment-friendly tiles. Thanks to systematic control of all phases in the process, these materials comply with the quality standards set by the international norms.

## NovaBell ecosystem

**40 % RECYCLINGANTEIL: QUALITÄT UND DESIGN IM ZEICHEN DES UMWELTSCHUTZES.**

Die Firma NovaBell strukturierte ihre Unternehmensführung von Anfang an mit hoher Sensibilität nach ethischen Grundlagen, die auf dem Respekt für die Umwelt und Arbeitssicherheit- und -gesundheit basieren.

Das Zeichen „NovaBell ecosystem“ steht für die Implementierung der nachhaltigen Entwicklung im Unternehmensprogramm. Konkret bedeutet dies eine intensive, unentwegt vorangetriebene Forschung im Hinblick auf Abfallminimierung, Wiederverwertung ausgedehnter Materialien im Produktionszyklus, Recycling und Minimierung von Energie und Ressourcen durch konsequentes Monitoring und ständige Modernisierung der Anlagen.

Ein ebenso hohes Umweltbewusstsein setzt NovaBell auch von ihren Lieferanten für Rohstoffe oder Halbzeuge voraus.

Das Zeichen „NovaBell ecosystem“ kennzeichnet vor allem NovaBell Produkte mit mindestens 40 % Recyclinganteilen in Gewicht, die somit als umweltfreundliche Fliesen bezeichnet werden können.

Dank einer systematischen Kontrolle sämtlicher Prozessphasen erfüllen alle Materialien die Qualitätsstandards der internationalen Normvorschriften.

## NovaBell ecosystem

**40% DE MATIÈRES RECYCLÉES : QUALITÉ ET DESIGN RESPECTENT L'ENVIRONNEMENT.**

NovaBell a toujours été sensible aux valeurs éthiques de respect de l'environnement et d'attention à la sécurité et la santé des travailleurs.

La marque «NovaBell ecosystem» identifie le programme de développement durable de l'entreprise, qui se concrétise dans la recherche attentive et continue pour la réduction des déchets, la réutilisation des matériaux de rebut dans le cycle de production, le recyclage et la réduction des consommations d'énergie et des ressources, par une attention constante et une modernisation continue des installations. NovaBell demande à ses fournisseurs de matières premières ou de produits semi-finis un comportement tout autant responsable. La marque «NovaBell ecosystem»

identifie surtout les produits NovaBell qui contiennent en poids 40% minimum de matériaux recyclés et qui peuvent donc se définir comme des carreaux écologiques. Grâce au contrôle systématique de toutes les phases du processus, les matériaux respectent les standards qualitatifs des normes internationales.

## NovaBell ecosystem

**40% DE MATERIAL RECICLADO: CALIDAD Y DISEÑO QUE RESPETAN EL MEDIO AMBIENTE.**

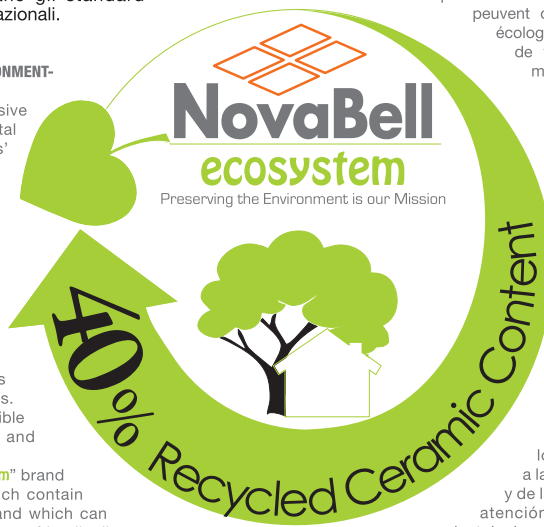
NovaBell siempre ha sido sensible a los valores éticos de respeto por el medio ambiente y de atención a la seguridad y la salud de los trabajadores.

La marca "NovaBell ecosystem" identifica el programa empresarial de desarrollo sostenible, que se concreta en una investigación continuamente orientada a la reducción de los desechos, a la reutilización en el ciclo productivo de los materiales residuales, al reciclaje y a la minimización del consumo energético y de los recursos, a través de una constante atención y una continua actualización de las instalaciones. NovaBell exige un comportamiento igualmente responsable a sus proveedores de materias primas y productos semielaborados. La marca "NovaBell ecosystem" identifica de manera especial los productos NovaBell que contienen al menos un 40% (en peso) de materiales reciclados, y que, por consiguiente, se pueden definir azulejos ecológicos. Gracias al control sistemático de todas las fases del proceso, los materiales respetan los estándares cualitativos de las normativas internacionales.

## NovaBell ecosystem

**40% ВТОРСЫРЬ: КАЧЕСТВО И ДИЗАЙН БЕРЕГУТ ПРИРОДУ.**

Компания NovaBell всегда чутко относилась к таким этическим ценностям, как охрана природы, забота о безопасности и здоровье трудящихся. Марка "NovaBell ecosystem" означает корпоративную программу экосовместимого развития, кропотливые и постоянные исследования которой направлены на сокращение отходов, на повторное использование бракованных материалов в производственном процессе, на переработку и сведение до минимума расхода энергии и ресурсов, уделяя пристальное внимание вопросу обновления оборудования. В частности, марка "NovaBell ecosystem" наносится на продукцию NovaBell, в которой содержание вторсырья мрывает 40%, и которую можно поэтому называть "экологической" плиткой. Благодаря тщательному контролю всех этапов производственного процесса, материалы удовлетворяют качественные требования международных стандартов.



# CONFORMITÀ LEED®

## SOFT LOOK È UN PRODOTTO CON PARTICOLARI CARATTERISTICHE DI ECOSOSTENIBILITÀ, CHE CONTRIBUISCE ALL'OTTENIMENTO DEI CREDITI PER LA CONFORMITÀ LEED (LEADERSHIP IN ENERGY AND ENVIRONMENTAL DESIGN).



### LEED® COMPLIANT

SOFT LOOK IS A PRODUCT WITH PARTICULAR ENVIRONMENTAL SUSTAINABILITY CHARACTERISTICS, THAT HELPS IN OBTAINING POINTS FOR LEED (LEADERSHIP IN ENERGY AND ENVIRONMENTAL DESIGN) COMPLIANCE.

### LEED® KONFORMITÄT

SOFT LOOK IST EIN AUSGESPROCHEN UMWELTFREUNDLICHES PRODUKT, DAS ZUM ERREICHEN DER PUNKTE FÜR DIE ZERTIFIZIERUNG NACH LEED (LEADERSHIP IN ENERGY AND ENVIRONMENTAL DESIGN) BEITRÄGT.

### LEED® CONFORMITE

LA SERIE SOFT LOOK PRESENTE DE CARACTERISTIQUES SPECIFIQUES DE DEVELOPPEMENT DURABLE; ELLE CONTRIBUE A OBTENIR DE CREDITS POUR LA CERTIFICATION LEED (LEADERSHIP IN ENERGY AND ENVIRONMENTAL DESIGN).

### LEED® CONFORMIDAD

SOFT LOOK ES UN PRODUCTO CON CARACTERÍSTICAS DE SOSTENIBILIDAD MEDIOAMBIENTAL ESPECIALES, QUE FACILITA LA OBTENCIÓN DE PUNTOS PARA LA CERTIFICACIÓN LEED (LEADERSHIP IN ENERGY AND ENVIRONMENTAL DESIGN) LIDERAZGO EN ENERGÍA Y DISEÑO AMBIENTAL.

### LEED® СООТВЕТСТВИЕ

SOFT LOOK - ЭТО ПРОДУКЦИЯ СО СПЕЦИАЛЬНЫМИ ХАРАКТЕРИСТИКАМИ ЭКОЛОГИЧЕСКОЙ ЭФФЕКТИВНОСТИ, СПОСОБСТВУЮЩАЯ ПОЛУЧЕНИЮ ЗАЧЕТНЫХ ОЧКОВ ДЛЯ СЕРТИФИКАТА LEED (LEADERSHIP IN ENERGY AND ENVIRONMENTAL DESIGN).

La certificazione è rilasciata negli Stati Uniti dall'U.S. Green Building Council (USGBC). In altri paesi sono attive, ed in rapida crescita, associazioni analoghe, come il Green Building Council Italia a cui Novabell è associata ([www.gbitalia.org](http://www.gbitalia.org)).

Il rating system LEED valuta ed attesta la sostenibilità ambientale, sociale ed economica degli edifici, considerati nel loro complesso. L'insieme dei crediti e dei requisiti contemplati dal sistema può far ottenere livelli crescenti di certificazione: Certified, Silver, Gold, Platinum. La certificazione, già importantissima negli U.S.A., sta avendo una diffusione crescente in numerosi altri stati (oltre 40 paesi).

Certification is given in the United States by the U.S. Green Building Council (USGBC). Similar associations, such as the Green Building Council Italia of which Novabell is associated ([www.gbitalia.org](http://www.gbitalia.org)), are rapidly appearing in other countries.

The LEED rating system evaluates and certifies the environmental, social and economic sustainability of buildings, considered on the whole. The total points and the requirements taken into account by the system allow increasing certification levels to be reached: Certified, Silver, Gold, Platinum. Certification, which is already very important in the U.S.A., is becoming increasingly popular in many other countries (more than 40 countries).

Die Zertifizierung wird in den Vereinigten Staaten vom U.S. Green Building Council (USGBC) ausgestellt. In anderen Ländern gibt es gleichwertige, rasch zunehmende Verbände, wie der Green Building Council Italia, dem Novabell angegliedert ist ([www.gbitalia.org](http://www.gbitalia.org)).

Das LEED Rating System bewertet und bescheinigt die Nachhaltigkeit von Gebäuden aus ökologischer, sozialer und wirtschaftlicher Sicht. Je nach Punktestand und vorbildlicher Umsetzung der Anforderungen des Systems erfolgt die Einordnung in höhere Qualitätsstufen: Certified, Silver, Gold, Platinum. Die Zertifizierung, die in den U.S.A. bereits einen sehr hohen

Stellenwert hat, findet auch in anderen Staaten (in mehr als 40 Ländern) zunehmende Verbreitung. /

La certification est délivrée aux États-Unis par l'U.S. Green Building Council (USGBC). Dans d'autres pays, de plus en plus d'associations analogues sont actives, telles que le Green Building Council Italia avec qui Novabell est associé ([www.gbitalia.org](http://www.gbitalia.org)).

The rating system LEED évalue et atteste la durabilité environnementale, sociale et économique des bâtiments, considérés dans leur ensemble. L'ensemble des crédits et des caractéristiques prévus par le système permet d'obtenir des niveaux croissants de certification: Certified, Silver, Gold, Platinum. La certification, déjà très importante aux U.S.A., a une diffusion croissante dans de nombreux autres états (plus de 40 pays).

La certificación ha sido emitida en los Estados Unidos de América por el U.S. Green Building Council (USGBC). En otros países existen, en rápido crecimiento, asociaciones análogas, como el Green Building Council Italia al que Novabell está asociada ([www.gbitalia.org](http://www.gbitalia.org)).

El rating system LEED evalúa y certifica la sostenibilidad medioambiental, social y económica de los edificios, considerados en su conjunto. La suma de créditos y requisitos contemplados por el sistema puede propiciar la consecución de niveles crecientes de certificación: Certified, Silver, Gold, Platinum. La certificación, que ya es muy importante en los U.S.A., está teniendo una difusión creciente en muchos otros países (más de cuarenta).

В Соединенных Штатах сертификат выдает U.S. Green Building Council (USGBC). В других странах действуют и быстро развиваются аналогичные организации, такие как Green Building Council Italia, в состав которой входит и Novabell ([www.gbitalia.org](http://www.gbitalia.org)).

Рейтинговая система LEED rating system оценивает и удостоверяет экологическую, социальную и экономическую эффективность зданий, рассматривая их в общем плане. Совокупность зачетных очков и требований, предусмотренных системой, позволяет получить разные уровни сертификации по возрастающей шкале: Certified, Silver, Gold, Platinum. Эта сертификация, которая только играет очень важную роль в США, но и широко распространяется в многочисленных других странах (их более 40).

## SOFT LOOK CONTRIBUISCE A SODDISFARE I CRITERI PER IL CONSEGUIMENTO DEL PUNTEGGIO LEED PER I SEGUENTI ASPETTI:

SOFT LOOK HELPS MEET THE CRITERIA FOR THE ATTAINING OF LEED POINTS FOR THE FOLLOWING ASPECTS: / SOFT LOOK TRÄGT ZUR ERFÜLLUNG DER VORGABEN FÜR DAS ERREICHEN DER PUNKTE FOLGENDER LEED-STANDARDS BEI: / SOFT LOOK CONTRIBUITS A SATISFAIRE LES SUIVANTES ASPECTS AFIN D'OBTENIR LES CREDITS LEED: / SOFT LOOK ES UNA AYUDA PARA ENCONTRAR LOS CRITERIOS PARA CONSEGUIR LOS PUNTOS LEED EN LOS SIGUIENTES ASPECTOS: / SOFT LOOK СПОСОБСТВУЕТ УДОВЛЕТВОРЕНИЮ КРИТЕРИЕВ ДЛЯ ПОЛУЧЕНИЯ ОЧКОВ LEED С ЭТИХ ТОЧЕК ЗРЕНИЯ:

### MR Credit 4.1 - 4.2

IT - Materie Riciclate. (10% - 20%) Il contenuto minimo di materiale riciclato pre/post consumer dei prodotti Novabell è del 40% come certificato da Bureau Veritas. (2 punto LEED)

GB - Recycled Content. (10% - 20%) The minimum pre/post consumer recycled material content of Novabell products is 40%, as certified by Bureau Veritas. (2 LEED points)

D - Recycling-Anteil. (10% - 20%) Der Mindest-Recycling-Anteil (pre- und post-consumer) der Novabell Produkte beträgt entsprechend der Zertifizierung durch das Bureau Veritas 40%. (2 LEED-Punkte)

F - Contenu recycé. (10% - 20%) Les produits Novabell ont un contenu recycé avant/après consommation de 40% minimum, conformément à la certification délivrée par Bureau Veritas. (2 points LEED)

ES - Material Reciclado. (10% - 20%) El contenido mínimo de material reciclado pre/post consumidor de los productos Novabell es del 40%, tal como es certificado por Bureau Veritas. (2 puntos LEED)

### EQ Credit 4.2

IT - Contenuto VOC. I prodotti Novabell non rilasciano VOC (Sostanze Organiche Volatili), come certificato da laboratori esterni qualificati. (2 punto LEED)

GB - VOC Content. The Novabell products do not release VOCs (Volatile Organic Compounds), as certified by approved external laboratories. (1 LEED point)

D - VOC-Gehalt. Die Novabell-Produkte setzen keine flüchtigen organischen Verbindungen (VOC) frei, wie es durch qualifizierte externe Labors zertifiziert ist. (1 LEED-Punkt)

F - Teneur en COV. Les produits Novabell ne dégagent pas de COV (composés organiques volatils), conformément aux certifications délivrées par les laboratoires extérieurs qualifiés. (1 point LEED)

ES - Contenido VOC. Los productos Novabell no despiden VOC (Sustancias Orgánicas Volátiles), tal como es certificado por laboratorios externos cualificados (1 punto LEED).

### ID Credit 1.1 - 1.4

IT - Innovation in Design. Riferito al credito MR 4.2: il contenuto di materiale riciclato di molti prodotti Novabell è superiore al 40% in peso (materiale pre-consumo). (1-4 punti LEED)

GB - Innovation in Design. Referring to credit MR 4.2: The percentage of recycled material contained in a large number of Novabell products is more than 40% by weight (pre-consumer material). (1-4 LEED points)

D - Innovation im Entwurf. Bezogen auf die Akkreditierung MR 4.2: Der prozentuale Recycling-Anteil vieler Novabell-Produkte übersteigt 40 % des Gewichts (pre-consumo). (1-4 LEED-Punkte)

F - Innovation en conception. Pour ce qui est du crédit MR 4.2: un grand nombre des produits Novabell présentent une valeur du contenu recycé supérieure à 40% en poids (matériau avant consommation). (1-4 points LEED)

ES - Innovación en Diseño. Referido al crédito MR 4.2: el contenido porcentual de material reciclado de muchos productos Novabell es superior al 40% en peso (material pre-consumo). (1-4 puntos LEED)

### EA Credit 1

IT - Ottimizzazione della performance energetica. La conducibilità termica λ dei prodotti Novabell è compresa tra 1 e 1,3 Wat/m<sup>2</sup>-K, per questo sono particolarmente indicati per sistemi di riscaldamento e pavimento e per pareti ventilate. (1-10 punti LEED)

GB - Optimization of energy performance. The thermal conductivity λ of the Novabell products is between 1 and 1.3 Wat/m<sup>2</sup>-K, making them particularly suitable for floor heating systems and ventilated walls. (1-10 LEED points)

D - Optimieren des Energiebedarfs. Die Wärmeleitfähigkeit λ der Novabell Produkte liegt zwischen 1 und 1,3 Wat/m<sup>2</sup>-K, weshalb sie sich besonders für beheizte Fußböden und hinterlüftete Wände eignen. (1-10 LEED-Punkte)

F - Optimisation de la performance énergétique. La conductivité thermique λ des produits Novabell est comprise entre 1 et 1,3 Wat/m<sup>2</sup>-K. Par conséquent, ils sont particulièrement indiqués pour les systèmes de chauffage au sol et pour les façades ventilées. (1-10 points LEED)

ES - Optimización del rendimiento energético. La conductividad térmica λ de los productos Novabell está comprendida entre 1 y 1,3 Wat/m<sup>2</sup>-K, por esto son particularmente indicados para sistemas de calefacción de pavimento y para paredes ventiladas. (1-10 puntos LEED)

### MR Credit 5.2

IT - Materiali Regionali. Questo credito si applica agli edifici realizzati entro 500 miglia dallo stabilimento di produzione Novabell poiché il 70% dei materiali utilizzati provengono da cave situati nel raggio di 500 miglia del sito produttivo. (2 LEED punti)

GB - Regional Materials. This credit applies to buildings constructed within 500 miles of the Novabell production plant, since 70% of the materials used are obtained from quarries within a 500 mile radius of the production location. (2 LEED points)

D - Regionale Materialien. Diese Akkreditierung wird für die innerhalb einer Entfernung von 500 Meilen (800 km) vom Novabell-Produktionsstandort gebauten Gebäude vergeben, da 70% der verwendeten Materialien aus Lagerstätten stammen, die im Umkreis von 500 Meilen (800 km) vom Produktionsort liegen. (2 LEED-Punkte)

F - Matériaux régionaux. Ce crédit concerne les bâtiments réalisés à l'intérieur d'un rayon de 500 milles (800 km) de l'usine de production Novabell. En effet, 70% des matériaux de construction sont extraits de carrières situées dans un rayon de 500 milles (800 km) du site de production. (2 points LEED)

ES - Materiales Regionales. Este crédito se aplica a los edificios realizados dentro de 500 millas (800 km) del establecimiento de producción Novabell, ya que el 70% de los materiales utilizados proviene de canchales situados en el radio de 500 millas (800 km) alrededor del lugar de producción. (2 puntos LEED)

### SS Credit 7.1

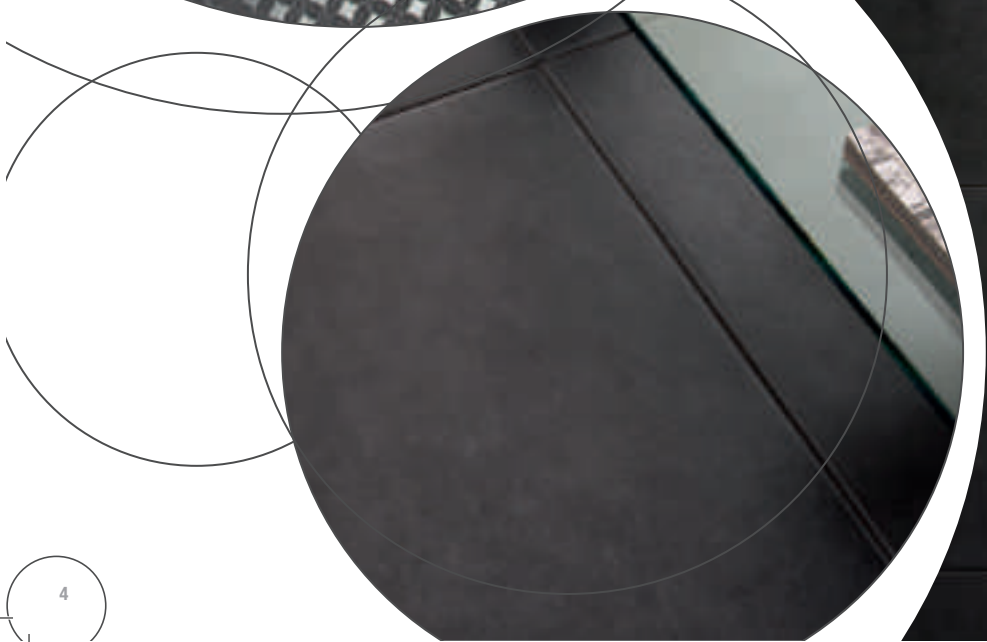
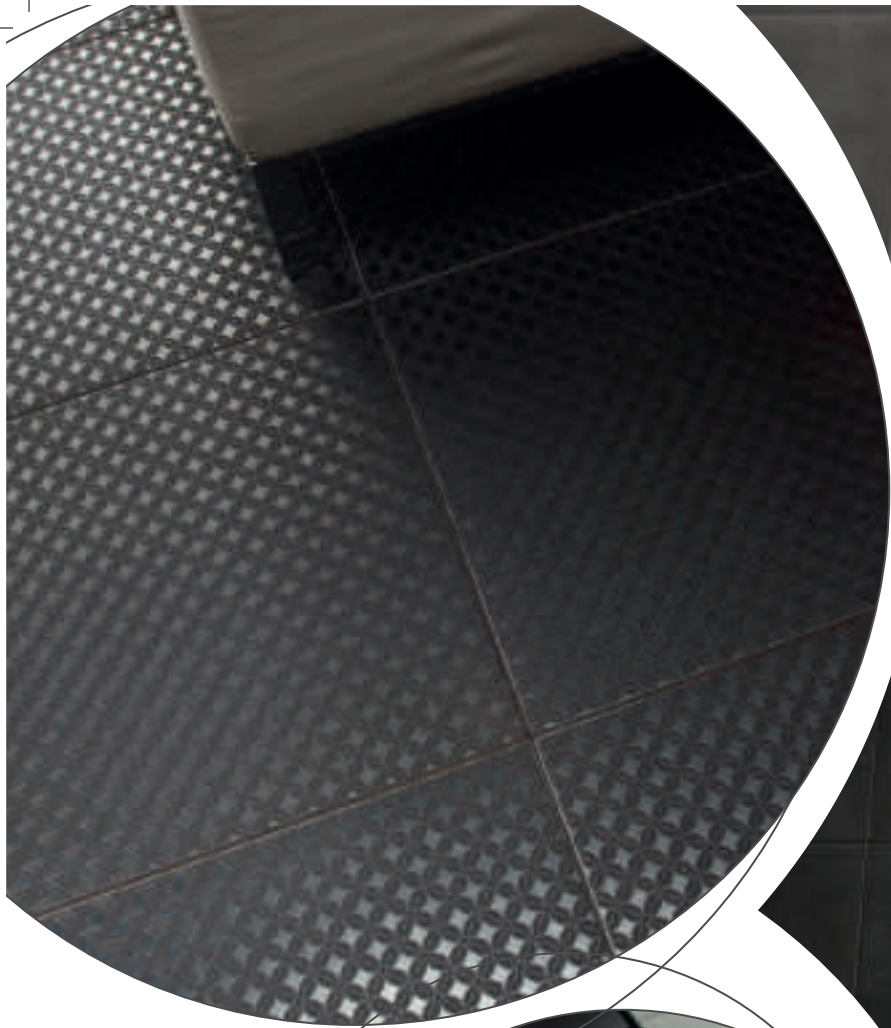
IT - Effetto Isola di Calore. Numerosi prodotti Novabell non contribuiscono ad aumentare la temperatura nelle zone urbane rispetto a quelle rurali (No Effect Isola Calore) in quanto l'indice di riflettività solare SRI è >29 di conseguenza i prodotti Novabell sono particolarmente indicati per ambienti esterni, coperti e non. (1 punto LEED)

GB - Heat Island Effect. A large number of Novabell products do not generate a rise in the temperature in urban compared to rural areas (No Heat Island Effect) since the materials' solar reflectance index (SRI) is >29. Novabell products are particularly suitable for outdoor environments, with and without roofs. (1 LEED point)

D - Wärmeinseleffekt. Zahlreiche Novabell Produkte tragen nicht dazu bei, die Temperatur in den städtischen Bereichen gegenüber dem Umland zu erhöhen (kein Wärmeinseleffekt), da sie ein solches Reflexionsvermögen von >29 besitzen. Die Novabell Produkte sind deshalb besonders geeignet für überdachte und nicht überdachte Außenbereiche. (1 LEED-Punkt)

F - Effet îlot de chaleur. Un grand nombre des produits Novabell ne contribuent pas à augmenter la température des zones urbaines par rapport à celle des zones rurales (pas d'effet îlot de chaleur), puisque leur indice de réflexion solaire IRS est >29. Les produits Novabell sont donc particulièrement indiqués pour les espaces extérieurs, couverts et découverts. (1 point LEED)

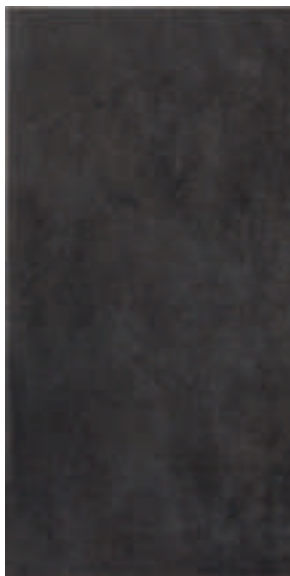
ES - Efecto Isla de Calor. Numerosos productos Novabell no contribuyen a aumentar la temperatura en las zonas urbanas respecto de aquellas rurales (No Efecto Isla Calor) dado que el índice de reflectancia solar SRI es >29, por lo que los productos Novabell son particularmente indicados para ambientes externos, cubiertos y descubiertos. (1 punto LEED)





NERO

NERO



45x90 - 17<sup>11</sup>/<sub>16</sub>"x35<sup>7</sup>/<sub>16</sub>"  
SFT 990N | NERO



$\frac{11}{16}$  mm  
cm 45x90  
inch 17<sup>11</sup>/<sub>16</sub>x35<sup>7</sup>/<sub>16</sub>

$\frac{11}{16}$  mm  
cm 60x60  
inch 23<sup>5</sup>/<sub>8</sub>x23<sup>5</sup>/<sub>8</sub>

$\frac{11}{16}$  mm  
cm 59,5x59,5  
inch 23<sup>7</sup>/<sub>16</sub>x23<sup>7</sup>/<sub>16</sub>

$\frac{10}{16}$  mm  
cm 45x45  
inch 17<sup>11</sup>/<sub>16</sub>x17<sup>11</sup>/<sub>16</sub>

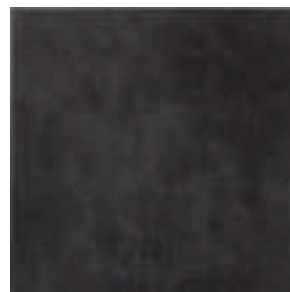
$\frac{10}{16}$  mm  
cm 30x60  
inch 11<sup>13</sup>/<sub>16</sub>x23<sup>5</sup>/<sub>8</sub>



60x60 - 23<sup>5</sup>/<sub>8</sub>"x23<sup>5</sup>/<sub>8</sub>"  
SFT 960 | NERO



59,5x59,5 - 23<sup>7</sup>/<sub>16</sub>"x23<sup>7</sup>/<sub>16</sub>"  
SFT 96RT | NERO RETTIFICATO



45x45 - 17<sup>11</sup>/<sub>16</sub>"x17<sup>11</sup>/<sub>16</sub>"  
SFT 909 | NERO



60x60 - 23<sup>5</sup>/<sub>8</sub>"x23<sup>5</sup>/<sub>8</sub>"  
SFT D961 | CAMPITURA TEXTURE NERO

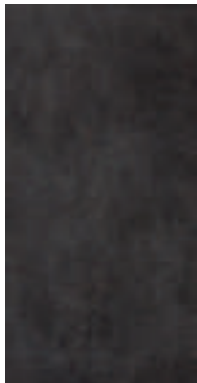


45x45 - 17<sup>11</sup>/<sub>16</sub>"x17<sup>11</sup>/<sub>16</sub>"  
SFT D903 | CAMPITURA TEXTURE NERO

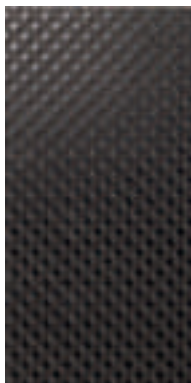




Numero di registrazione  
IT/21/07



30x60 - 11<sup>13</sup>/<sub>16</sub>"x23<sup>5</sup>/<sub>8</sub>"  
SFT 099 | NERO



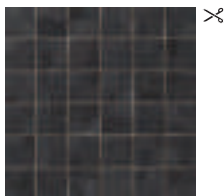
30x60 - 11<sup>13</sup>/<sub>16</sub>"x23<sup>5</sup>/<sub>8</sub>"  
SFT D093 | CAMPITURA  
TEXTURE NERO



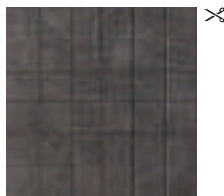
30x60 - 11<sup>13</sup>/<sub>16</sub>"x23<sup>5</sup>/<sub>8</sub>"  
SFT D97K | CAMPITURA  
RAMAGE NERO



30x30 - 11<sup>13</sup>/<sub>16</sub>"x11<sup>13</sup>/<sub>16</sub>"  
SFT 997 | MOSAICO 2,5x2,5  
NERO R10



30x30 - 11<sup>13</sup>/<sub>16</sub>"x11<sup>13</sup>/<sub>16</sub>"  
SFT 983 | MOSAICO 5x5  
NERO R10



30x30 - 11<sup>13</sup>/<sub>16</sub>"x11<sup>13</sup>/<sub>16</sub>"  
SFT 995 | MOSAICO 5x5  
BRILLANTI NERO



8x30 - 3<sup>1</sup>/<sub>8</sub>"x11<sup>13</sup>/<sub>16</sub>"  
SFT L90K | BORDO BOISERIE  
NERO



1,5x8 - 9<sup>1</sup>/<sub>16</sub>"x3<sup>1</sup>/<sub>8</sub>"  
SFT L91K | ANGOLO BOISERIE  
NERO



30x60 - 11<sup>13</sup>/<sub>16</sub>"x23<sup>5</sup>/<sub>8</sub>"  
SFT 908K | MATTONCINO NERO



20x30 - 7<sup>7</sup>/<sub>8</sub>"x11<sup>13</sup>/<sub>16</sub>"  
SFT 993K | FASCIA MOSAICO  
NERO



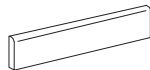
1,5x30 - 9<sup>1</sup>/<sub>16</sub>"x11<sup>13</sup>/<sub>16</sub>"  
SFT M93K | MATITA JOLLY  
NERO



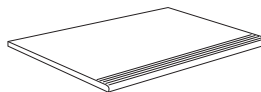
1,5x1,5 - 9<sup>1</sup>/<sub>16</sub>"x9<sup>1</sup>/<sub>16</sub>"  
SFT J95K | RACCORDO MATITA  
NERO



7x60 - 2<sup>5</sup>/<sub>16</sub>"x23<sup>5</sup>/<sub>8</sub>"  
SFT B96K | BATTISCOPA  
NERO



7x45 - 2<sup>13</sup>/<sub>16</sub>"x17<sup>11</sup>/<sub>16</sub>"  
SFT B95K | BATTISCOPA  
NERO



30x60 - 11<sup>13</sup>/<sub>16</sub>"x23<sup>5</sup>/<sub>8</sub>"  
SFT G90K | GRADINO  
NERO INCISO

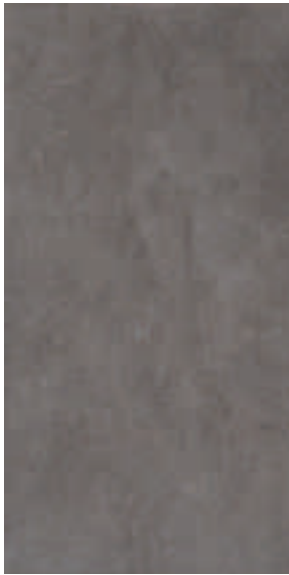
ANTRACITE







# ANTRACITE



45x90 - 17<sup>11</sup>/<sub>16</sub>"x35<sup>7</sup>/<sub>16</sub>"  
SFT 290N | ANTRACITE

3  
580

11 mm  
cm 45x90  
inch 17<sup>11</sup>/<sub>16</sub>x35<sup>7</sup>/<sub>16</sub>

11 mm  
cm 60x60  
inch 23<sup>5</sup>/<sub>8</sub>x23<sup>5</sup>/<sub>8</sub>

11 mm  
cm 59,5x59,5  
inch 23<sup>7</sup>/<sub>16</sub>x23<sup>7</sup>/<sub>16</sub>

10 mm  
cm 45x45  
inch 17<sup>11</sup>/<sub>16</sub>x17<sup>11</sup>/<sub>16</sub>

10 mm  
cm 30x60  
inch 11<sup>13</sup>/<sub>16</sub>x23<sup>5</sup>/<sub>8</sub>



60x60 - 23<sup>3</sup>/<sub>8</sub>"x23<sup>3</sup>/<sub>8</sub>"  
SFT 260 | ANTRACITE

3  
560

59,5x59,5 - 23<sup>7</sup>/<sub>16</sub>"x23<sup>7</sup>/<sub>16</sub>"  
SFT 26RT | ANTRACITE RETTIFICATO

3  
605



45x45 - 17<sup>11</sup>/<sub>16</sub>"x17<sup>11</sup>/<sub>16</sub>"  
SFT 202 | ANTRACITE

6  
515

45x45 - 17<sup>11</sup>/<sub>16</sub>"x17<sup>11</sup>/<sub>16</sub>"  
SFT 002 | ANTRACITE \*ANTISLIP

6  
533



60x60 - 23<sup>3</sup>/<sub>8</sub>"x23<sup>3</sup>/<sub>8</sub>"  
SFT D261 | CAMPITURA TEXTURE ANTRACITE

3  
644

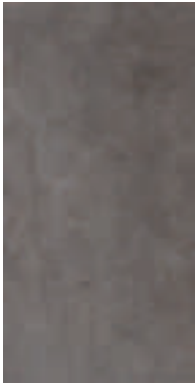


45x45 - 17<sup>11</sup>/<sub>16</sub>"x17<sup>11</sup>/<sub>16</sub>"  
SFT D203 | CAMPITURA TEXTURE ANTRACITE

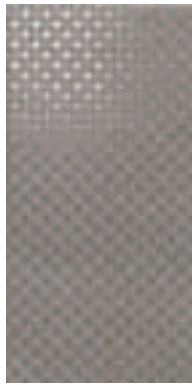
4  
D-663



Numero di registrazione  
IT/21/07



30x60 - 11<sup>13</sup>/<sub>16</sub>"x23<sup>5</sup>/<sub>8</sub>"  
SFT 022 | ANTRACITE



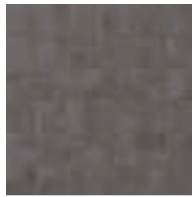
30x60 - 11<sup>13</sup>/<sub>16</sub>"x23<sup>5</sup>/<sub>8</sub>"  
SFT D023 | CAMPITURA  
TEXTURE ANTRACITE



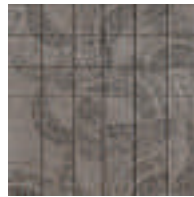
30x60 - 11<sup>13</sup>/<sub>16</sub>"x23<sup>5</sup>/<sub>8</sub>"  
SFT D27K | CAMPITURA  
RAMAGE ANTRACITE



30x30 - 11<sup>13</sup>/<sub>16</sub>"x11<sup>13</sup>/<sub>16</sub>"  
SFT 227 | MOSAICO 2,5x2,5  
ANTRACITE R10



30x30 - 11<sup>13</sup>/<sub>16</sub>"x11<sup>13</sup>/<sub>16</sub>"  
SFT 283 | MOSAICO 5x5  
ANTRACITE R10



30x30 - 11<sup>13</sup>/<sub>16</sub>"x11<sup>13</sup>/<sub>16</sub>"  
SFT 225 | MOSAICO 5x5  
BRILLANTI ANTRACITE



8x30 - 3<sup>1</sup>/<sub>8</sub>"x11<sup>13</sup>/<sub>16</sub>"  
SFT L20K | BORDO BOISERIE  
ANTRACITE



1,5x8 - 9<sup>1</sup>/<sub>16</sub>"x3<sup>1</sup>/<sub>8</sub>"  
SFT L21K | ANGOLO BOISERIE  
ANTRACITE



30x60 - 11<sup>13</sup>/<sub>16</sub>"x23<sup>5</sup>/<sub>8</sub>"  
SFT 208K | MATTONCINO ANTRACITE



20x30 - 7<sup>7</sup>/<sub>8</sub>"x11<sup>13</sup>/<sub>16</sub>"  
SFT 223K | FASCIA MOSAICO  
ANTRACITE



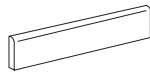
1,5x30 - 9<sup>1</sup>/<sub>16</sub>"x11<sup>13</sup>/<sub>16</sub>"  
SFT M23K | MATITTA JOLLY  
ANTRACITE



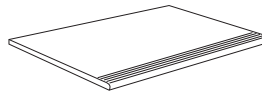
1,5x1,5 - 9<sup>1</sup>/<sub>16</sub>"x9<sup>1</sup>/<sub>16</sub>"  
SFT J25K | RACCORDO MATITA  
ANTRACITE



7x60 - 2<sup>5</sup>/<sub>16</sub>"x23<sup>5</sup>/<sub>8</sub>"  
SFT B26K | BATTISCOPA  
ANTRACITE



7x45 - 2<sup>13</sup>/<sub>16</sub>"x17<sup>11</sup>/<sub>16</sub>"  
SFT B25K | BATTISCOPA  
ANTRACITE

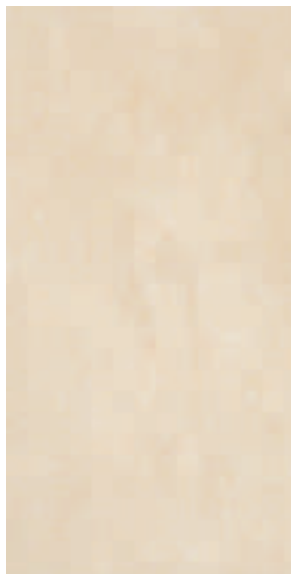


30x60 - 11<sup>13</sup>/<sub>16</sub>"x23<sup>5</sup>/<sub>8</sub>"  
SFT G20K | GRADINO  
ANTRACITE INCISO



BEIGE

BEIGE



45x90 - 17<sup>11</sup>/<sub>16</sub>"x35<sup>7</sup>/<sub>16</sub>"  
SFT 490N | BEIGE



3

580

11 mm  
cm 45x90  
inch 17<sup>11</sup>/<sub>16</sub>x35<sup>7</sup>/<sub>16</sub>

11 mm  
cm 60x60  
inch 23<sup>5</sup>/<sub>8</sub>x23<sup>5</sup>/<sub>8</sub>

11 mm  
cm 59,5x59,5  
inch 23<sup>7</sup>/<sub>16</sub>x23<sup>7</sup>/<sub>16</sub>

10 mm  
cm 45x45  
inch 17<sup>11</sup>/<sub>16</sub>x17<sup>11</sup>/<sub>16</sub>

10 mm  
cm 30x60  
inch 11<sup>13</sup>/<sub>16</sub>x23<sup>5</sup>/<sub>8</sub>



60x60 - 23<sup>5</sup>/<sub>8</sub>"x23<sup>5</sup>/<sub>8</sub>"  
SFT 460 | BEIGE



3

560

59,5x59,5 - 23<sup>7</sup>/<sub>16</sub>"x23<sup>7</sup>/<sub>16</sub>"  
SFT 46RT | BEIGE RETTIFICATO



3

605



45x45 - 17<sup>11</sup>/<sub>16</sub>"x17<sup>11</sup>/<sub>16</sub>"  
SFT 404 | BEIGE



6

515

45x45 - 17<sup>11</sup>/<sub>16</sub>"x17<sup>11</sup>/<sub>16</sub>"  
SFT 004 | BEIGE \*ANTISLIP



6

533

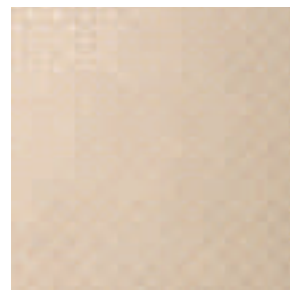


60x60 - 23<sup>5</sup>/<sub>8</sub>"x23<sup>5</sup>/<sub>8</sub>"  
SFT D461 | CAMPITURA TEXTURE BEIGE



3

6474



45x45 - 17<sup>11</sup>/<sub>16</sub>"x17<sup>11</sup>/<sub>16</sub>"  
SFT D403 | CAMPITURA TEXTURE  
BEIGE



4

D-663





Numero di registrazione  
IT/21/07

SOFT  
Look



30x60 - 11<sup>13</sup>/<sub>16</sub>"x23<sup>3</sup>/<sub>8</sub>"  
SFT 044 | ANTRACITE



30x60 - 11<sup>13</sup>/<sub>16</sub>"x23<sup>3</sup>/<sub>8</sub>"  
SFT D043 | CAMPITURA  
TEXTURE BEIGE



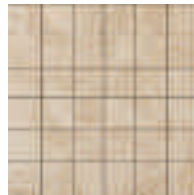
30x60 - 11<sup>13</sup>/<sub>16</sub>"x23<sup>3</sup>/<sub>8</sub>"  
SFT D47K | CAMPITURA  
RAMAGE BEIGE



30x30 - 11<sup>13</sup>/<sub>16</sub>"x11<sup>13</sup>/<sub>16</sub>"  
SFT 447 | MOSAICO 2,5x2,5  
BEIGE R10



30x30 - 11<sup>13</sup>/<sub>16</sub>"x11<sup>13</sup>/<sub>16</sub>"  
SFT 483 | MOSAICO 5x5  
BEIGE R10



30x30 - 11<sup>13</sup>/<sub>16</sub>"x11<sup>13</sup>/<sub>16</sub>"  
SFT 445 | MOSAICO 5x5  
BRILLANTI BEIGE



8x30 - 3<sup>1</sup>/<sub>8</sub>"x11<sup>13</sup>/<sub>16</sub>"  
SFT L40K | BORDO BOISERIE  
BEIGE



1,5x8 - 9<sup>1</sup>/<sub>16</sub>"x3<sup>1</sup>/<sub>8</sub>"  
SFT L41K | ANGOLO BOISERIE  
BEIGE



30x60 - 11<sup>13</sup>/<sub>16</sub>"x23<sup>3</sup>/<sub>8</sub>"  
SFT 408K | MATTONCINO ANTRACITE



20x30 - 7<sup>7</sup>/<sub>8</sub>"x11<sup>13</sup>/<sub>16</sub>"  
SFT 443K | FASCIA MOSAICO  
BEIGE



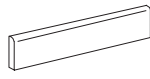
1,5x30 - 9<sup>1</sup>/<sub>16</sub>"x11<sup>13</sup>/<sub>16</sub>"  
SFT M43K | MATTITA JOLLY  
BEIGE



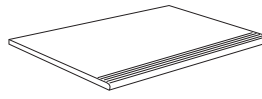
1,5x1,5 - 9<sup>1</sup>/<sub>16</sub>"x9<sup>1</sup>/<sub>16</sub>"  
SFT J45K | RACCORDO MATTITA  
BEIGE



7x60 - 2<sup>15</sup>/<sub>16</sub>"x23<sup>3</sup>/<sub>8</sub>"  
SFT B46K | BATTISCOPA  
BEIGE



7x45 - 2<sup>15</sup>/<sub>16</sub>"x17<sup>11</sup>/<sub>16</sub>"  
SFT B45K | BATTISCOPA  
BEIGE



30x60 - 11<sup>13</sup>/<sub>16</sub>"x23<sup>3</sup>/<sub>8</sub>"  
SFT G40K | GRADINO  
BEIGE INCISO

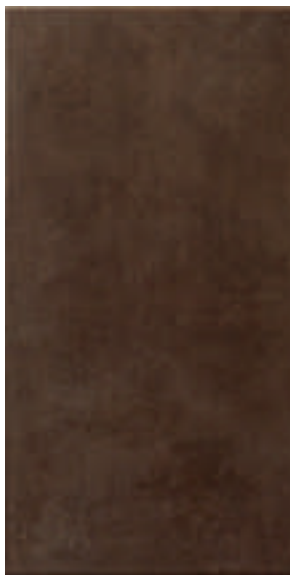
CAFFÈ







# CAFFÈ



45x90 - 17<sup>11</sup>/<sub>16</sub>"x35<sup>7</sup>/<sub>16</sub>"  
SFT 690N | CAFFÈ



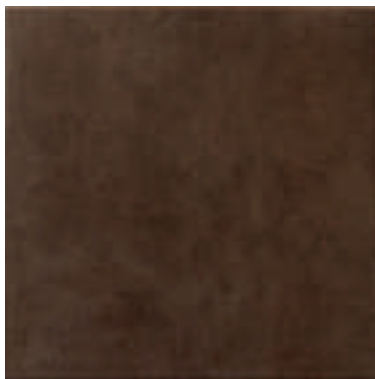
11 mm  
cm 45x90  
inch 17<sup>11</sup>/<sub>16</sub>x35<sup>7</sup>/<sub>16</sub>

11 mm  
cm 60x60  
inch 23<sup>5</sup>/<sub>8</sub>x23<sup>5</sup>/<sub>8</sub>

11 mm  
cm 59,5x59,5  
inch 23<sup>7</sup>/<sub>16</sub>x23<sup>7</sup>/<sub>16</sub>

10 mm  
cm 45x45  
inch 17<sup>11</sup>/<sub>16</sub>x17<sup>11</sup>/<sub>16</sub>

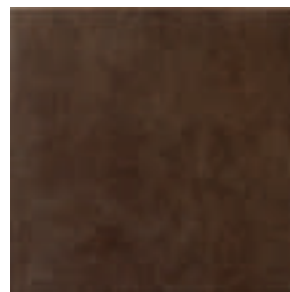
10 mm  
cm 30x60  
inch 11<sup>13</sup>/<sub>16</sub>x23<sup>5</sup>/<sub>8</sub>



60x60 - 23<sup>5</sup>/<sub>8</sub>"x23<sup>5</sup>/<sub>8</sub>"  
SFT 660 | CAFFÈ



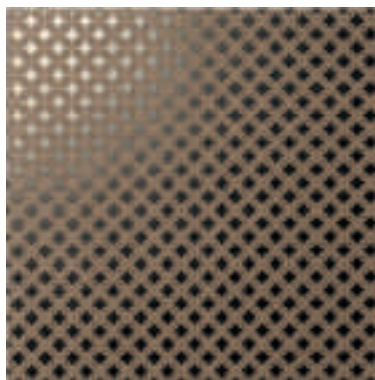
59,5x59,5 - 23<sup>7</sup>/<sub>16</sub>"x23<sup>7</sup>/<sub>16</sub>"  
SFT 66RT | CAFFÈ RETTIFICATO



45x45 - 17<sup>11</sup>/<sub>16</sub>"x17<sup>11</sup>/<sub>16</sub>"  
SFT 606 | CAFFÈ



45x45 - 17<sup>11</sup>/<sub>16</sub>"x17<sup>11</sup>/<sub>16</sub>"  
SFT 006 | CAFFÈ \*ANTISLIP



60x60 - 23<sup>5</sup>/<sub>8</sub>"x23<sup>5</sup>/<sub>8</sub>"  
SFT D661 | CAMPITURA TEXTURE CAFFÈ

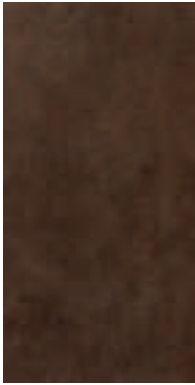


45x45 - 17<sup>11</sup>/<sub>16</sub>"x17<sup>11</sup>/<sub>16</sub>"  
SFT D603 | CAMPITURA TEXTURE CAFFÈ





Numero di registrazione  
IT/21/07



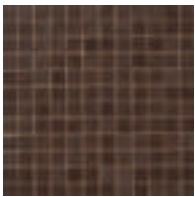
30x60 - 11<sup>13</sup>/<sub>16</sub>"x23<sup>5</sup>/<sub>8</sub>"  
SFT 066 | CAFFÈ



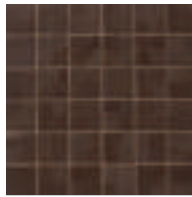
30x60 - 11<sup>13</sup>/<sub>16</sub>"x23<sup>5</sup>/<sub>8</sub>"  
SFT D063 | CAMPITURA  
TEXTURE CAFFÈ



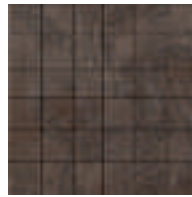
30x60 - 11<sup>13</sup>/<sub>16</sub>"x23<sup>5</sup>/<sub>8</sub>"  
SFT D67K | CAMPITURA  
RAMAGE CAFFÈ



30x30 - 11<sup>13</sup>/<sub>16</sub>"x11<sup>13</sup>/<sub>16</sub>"  
SFT 667 | MOSAICO 2,5x2,5  
CAFFÈ R10



30x30 - 11<sup>13</sup>/<sub>16</sub>"x11<sup>13</sup>/<sub>16</sub>"  
SFT 683 | MOSAICO 5x5  
CAFFÈ R10



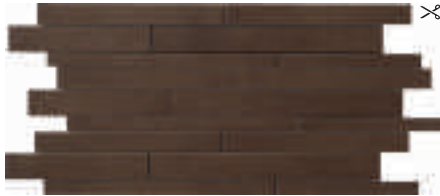
30x30 - 11<sup>13</sup>/<sub>16</sub>"x11<sup>13</sup>/<sub>16</sub>"  
SFT 665 | MOSAICO 5x5  
BRILLANTI CAFFÈ



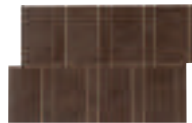
8x30 - 3<sup>1</sup>/<sub>8</sub>"x11<sup>13</sup>/<sub>16</sub>"  
SFT L60K | BORDO BOISERIE  
CAFFÈ



1,5x8 - 9<sup>1</sup>/<sub>16</sub>"x3<sup>1</sup>/<sub>8</sub>"  
SFT L61K | ANGOLO BOISERIE  
CAFFÈ



30x60 - 11<sup>13</sup>/<sub>16</sub>"x23<sup>5</sup>/<sub>8</sub>"  
SFT 608K | MATTONCINO CAFFÈ



20x30 - 7<sup>7</sup>/<sub>8</sub>"x11<sup>13</sup>/<sub>16</sub>"  
SFT 663K | FASCIA MOSAICO  
CAFFÈ



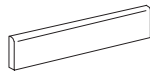
1,5x30 - 9<sup>1</sup>/<sub>16</sub>"x11<sup>13</sup>/<sub>16</sub>"  
SFT M63K | MATITTA JOLLY  
CAFFÈ



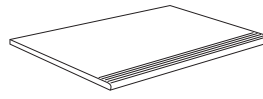
1,5x1,5 - 9<sup>1</sup>/<sub>16</sub>"x9<sup>1</sup>/<sub>16</sub>"  
SFT J65K | RACCORDO MATITTA  
CAFFÈ



7x60 - 2<sup>15</sup>/<sub>16</sub>"x23<sup>5</sup>/<sub>8</sub>"  
SFT B66K | BATTISCOPA  
CAFFÈ



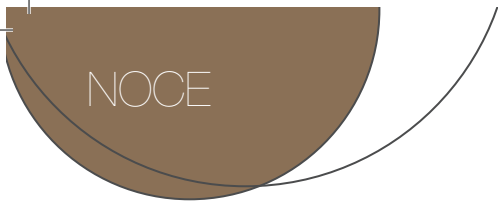
7x45 - 2<sup>15</sup>/<sub>16</sub>"x17<sup>11</sup>/<sub>16</sub>"  
SFT B65K | BATTISCOPA  
CAFFÈ



30x60 - 11<sup>13</sup>/<sub>16</sub>"x23<sup>5</sup>/<sub>8</sub>"  
SFT G60K | GRADINO  
CAFFÈ INCISO







NOCE



45x90 - 17<sup>11</sup>/<sub>16</sub>"x35<sup>7</sup>/<sub>16</sub>"  
SFT 590N | NOCE



$\frac{11}{16}$  mm  
cm 45x90  
inch 17<sup>11</sup>/<sub>16</sub>x35<sup>7</sup>/<sub>16</sub>

$\frac{11}{16}$  mm  
cm 60x60  
inch 23<sup>5</sup>/<sub>8</sub>x23<sup>5</sup>/<sub>8</sub>

$\frac{11}{16}$  mm  
cm 59,5x59,5  
inch 23<sup>7</sup>/<sub>16</sub>x23<sup>7</sup>/<sub>16</sub>

$\frac{10}{16}$  mm  
cm 45x45  
inch 17<sup>11</sup>/<sub>16</sub>x17<sup>11</sup>/<sub>16</sub>

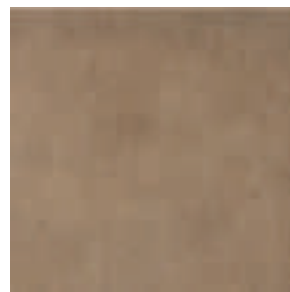
$\frac{10}{16}$  mm  
cm 30x60  
inch 11<sup>13</sup>/<sub>16</sub>x23<sup>5</sup>/<sub>8</sub>



60x60 - 23<sup>5</sup>/<sub>8</sub>"x23<sup>5</sup>/<sub>8</sub>"  
SFT 560 | NOCE



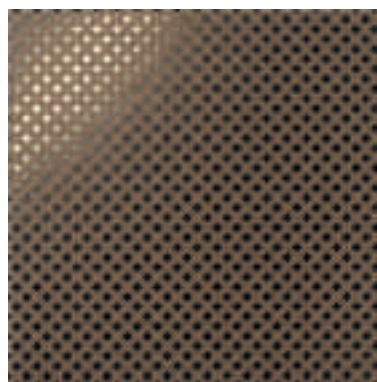
59,5x59,5 - 23<sup>7</sup>/<sub>16</sub>"x23<sup>7</sup>/<sub>16</sub>"  
SFT 56RT | NOCE RETTIFICATO



45x45 - 17<sup>11</sup>/<sub>16</sub>"x17<sup>11</sup>/<sub>16</sub>"  
SFT 505 | NOCE



45x45 - 17<sup>11</sup>/<sub>16</sub>"x17<sup>11</sup>/<sub>16</sub>"  
SFT 005 | NOCE \*ANTISLIP



60x60 - 23<sup>5</sup>/<sub>8</sub>"x23<sup>5</sup>/<sub>8</sub>"  
SFT D561 | CAMPITURA TEXTURE NOCE



45x45 - 17<sup>11</sup>/<sub>16</sub>"x17<sup>11</sup>/<sub>16</sub>"  
SFT D503 | CAMPITURA TEXTURE NOCE

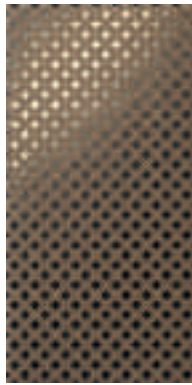




Numero di registrazione  
IT/21/07



30x60 - 11<sup>13</sup>/<sub>16</sub>"x23<sup>5</sup>/<sub>8</sub>"  
SFT 055 | NOCE 7 513



30x60 - 11<sup>13</sup>/<sub>16</sub>"x23<sup>5</sup>/<sub>8</sub>"  
SFT D053 | CAMPITTURA  
TEXTURE NOCE 4 0-883



30x60 - 11<sup>13</sup>/<sub>16</sub>"x23<sup>5</sup>/<sub>8</sub>"  
SFT D57K | CAMPITTURA  
RAMAGE NOCE 4 430



30x30 - 11<sup>13</sup>/<sub>16</sub>"x11<sup>13</sup>/<sub>16</sub>"  
SFT 557 | MOSAICO 2,5x2,5  
NOCE R10 10 0-572



30x30 - 11<sup>13</sup>/<sub>16</sub>"x11<sup>13</sup>/<sub>16</sub>"  
SFT 583 | MOSAICO 5x5  
NOCE R10 10 0-667



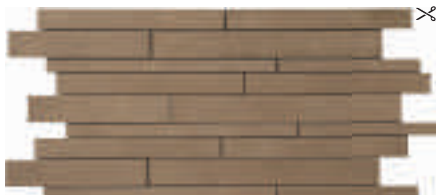
30x30 - 11<sup>13</sup>/<sub>16</sub>"x11<sup>13</sup>/<sub>16</sub>"  
SFT 595 | MOSAICO 5x5  
BRILLANTI NOCE 6 500



8x30 - 3<sup>1</sup>/<sub>8</sub>"x11<sup>13</sup>/<sub>16</sub>"  
SFT L50K | BORDO BOISERIE  
NOCE 6 310



1,5x8 - 9<sup>1</sup>/<sub>16</sub>"x3<sup>1</sup>/<sub>8</sub>"  
SFT L51K | ANGOLO BOISERIE  
NOCE 4 280



30x60 - 11<sup>13</sup>/<sub>16</sub>"x23<sup>5</sup>/<sub>8</sub>"  
SFT 508K | MATTONCINO NOCE 4 0-572



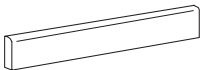
20x30 - 7<sup>7</sup>/<sub>16</sub>"x11<sup>13</sup>/<sub>16</sub>"  
SFT 553K | FASCIA MOSAICO  
NOCE 6 220



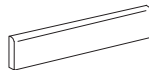
1,5x30 - 9<sup>1</sup>/<sub>16</sub>"x11<sup>13</sup>/<sub>16</sub>"  
SFT M53K | MATITTA JOLLY  
NOCE 6 210



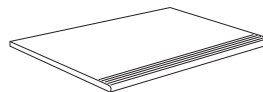
1,5x1,5 - 9<sup>1</sup>/<sub>16</sub>"x9<sup>1</sup>/<sub>16</sub>"  
SFT J55K | RACCORDO MATITTA  
NOCE 4 220



7x60 - 2<sup>5</sup>/<sub>16</sub>"x23<sup>5</sup>/<sub>8</sub>"  
SFT B56K | BATTISCOPA  
NOCE 15 230



7x45 - 2<sup>5</sup>/<sub>16</sub>"x17<sup>11</sup>/<sub>16</sub>"  
SFT B55K | BATTISCOPA  
NOCE 15 165



30x60 - 11<sup>13</sup>/<sub>16</sub>"x23<sup>5</sup>/<sub>8</sub>"  
SFT G50K | GRADINO  
NOCE INCISO 4 380

GRIGIO CHIARO







# GRIGIO CHIARO



45x90 - 17<sup>11</sup>/<sub>16</sub>"x35<sup>7</sup>/<sub>16</sub>"  
**SFT 190N** | GRIGIO CHIARO

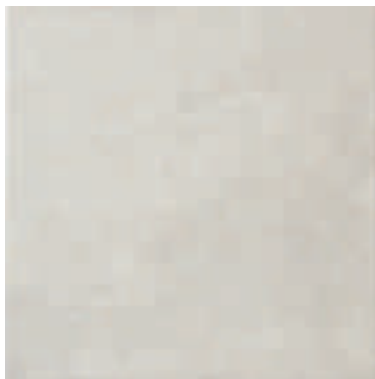
11 mm  
**cm 45x90**  
 inch 17<sup>11</sup>/<sub>16</sub>x35<sup>7</sup>/<sub>16</sub>

11 mm  
**cm 60x60**  
 inch 23<sup>5</sup>/<sub>8</sub>x23<sup>5</sup>/<sub>8</sub>

11 mm  
**cm 59,5x59,5**  
 inch 23<sup>7</sup>/<sub>16</sub>x23<sup>7</sup>/<sub>16</sub>

10 mm  
**cm 45x45**  
 inch 17<sup>11</sup>/<sub>16</sub>x17<sup>11</sup>/<sub>16</sub>

10 mm  
**cm 30x60**  
 inch 11<sup>13</sup>/<sub>16</sub>x23<sup>5</sup>/<sub>8</sub>



60x60 - 23<sup>3</sup>/<sub>8</sub>"x23<sup>3</sup>/<sub>8</sub>"  
**SFT 160** | GRIGIO CHIARO

59,5x59,5 - 23<sup>7</sup>/<sub>16</sub>"x23<sup>7</sup>/<sub>16</sub>"  
**SFT 16RT** | GRIGIO CHIARO RETTIFICATO



45x45 - 17<sup>11</sup>/<sub>16</sub>"x17<sup>11</sup>/<sub>16</sub>"  
**SFT 101** | GRIGIO CHIARO



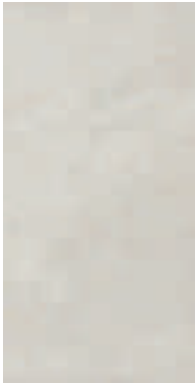
60x60 - 23<sup>3</sup>/<sub>8</sub>"x23<sup>3</sup>/<sub>8</sub>"  
**SFT D161** | CAMPITURA TEXTURE GRIGIO CHIARO



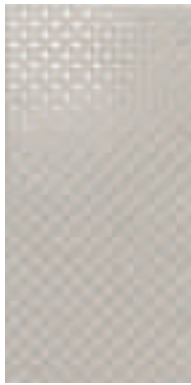
45x45 - 17<sup>11</sup>/<sub>16</sub>"x17<sup>11</sup>/<sub>16</sub>"  
**SFT D103** | CAMPITURA TEXTURE GRIGIO CHIARO



Numero di registrazione  
IT/21/07



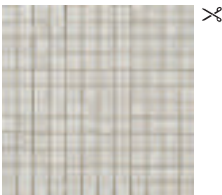
30x60 - 11<sup>13</sup>/<sub>16</sub>"x23<sup>5</sup>/<sub>8</sub>"  
SFT 011 | GRIGIO CHIARO



30x60 - 11<sup>13</sup>/<sub>16</sub>"x23<sup>5</sup>/<sub>8</sub>"  
SFT D013 | CAMPITURA  
TEXTURE GRIGIO CHIARO



30x60 - 11<sup>13</sup>/<sub>16</sub>"x23<sup>5</sup>/<sub>8</sub>"  
SFT D17K | CAMPITURA  
RAMAGE GRIGIO CHIARO



30x30 - 11<sup>13</sup>/<sub>16</sub>"x11<sup>13</sup>/<sub>16</sub>"  
SFT 117 | MOSAICO 2,5x2,5  
GRIGIO CHIARO R10



30x30 - 11<sup>13</sup>/<sub>16</sub>"x11<sup>13</sup>/<sub>16</sub>"  
SFT 183 | MOSAICO 5x5  
GRIGIO CHIARO R10



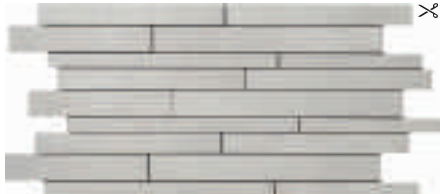
30x30 - 11<sup>13</sup>/<sub>16</sub>"x11<sup>13</sup>/<sub>16</sub>"  
SFT 115 | MOSAICO 5x5  
BRILLANTI GRIGIO CHIARO



8x30 - 3<sup>1</sup>/<sub>8</sub>"x11<sup>13</sup>/<sub>16</sub>"  
SFT L10K | BORDO BOISERIE  
GRIGIO CHIARO



1,5x8 - 9<sup>1</sup>/<sub>16</sub>"x3<sup>1</sup>/<sub>8</sub>"  
SFT L11K | ANGOLO BOISERIE  
GRIGIO CHIARO



30x60 - 11<sup>13</sup>/<sub>16</sub>"x23<sup>5</sup>/<sub>8</sub>"  
SFT 108K | MATTONCINO GRIGIO CHIARO



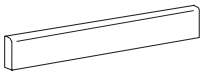
20x30 - 7<sup>7</sup>/<sub>16</sub>"x11<sup>13</sup>/<sub>16</sub>"  
SFT 113K | FASCIA MOSAICO  
GRIGIO CHIARO



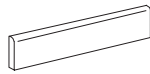
1,5x30 - 9<sup>1</sup>/<sub>16</sub>"x11<sup>13</sup>/<sub>16</sub>"  
SFT M13K | MATITA JOLLY  
GRIGIO CHIARO



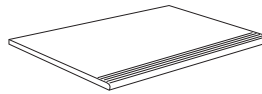
1,5x1,5 - 9<sup>1</sup>/<sub>16</sub>"x9<sup>1</sup>/<sub>16</sub>"  
SFT J15K | RACCORDO MATITA  
GRIGIO CHIARO



7x60 - 2<sup>5</sup>/<sub>16</sub>"x23<sup>5</sup>/<sub>8</sub>"  
SFT B16K | BATTISCOPA  
GRIGIO CHIARO



7x45 - 2<sup>5</sup>/<sub>16</sub>"x17<sup>11</sup>/<sub>16</sub>"  
SFT B15K | BATTISCOPA  
GRIGIO CHIARO

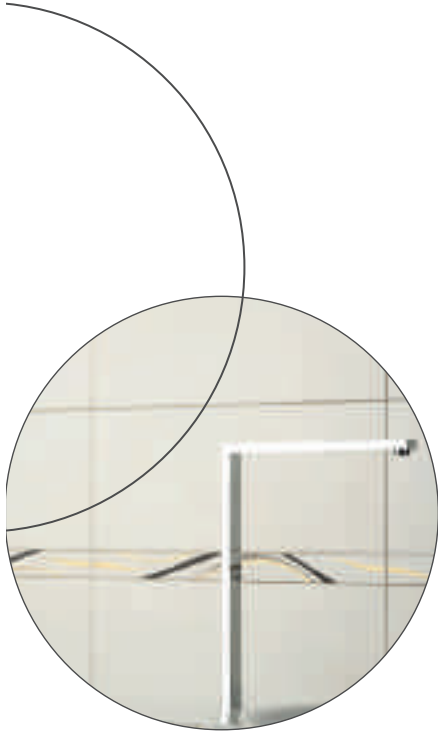
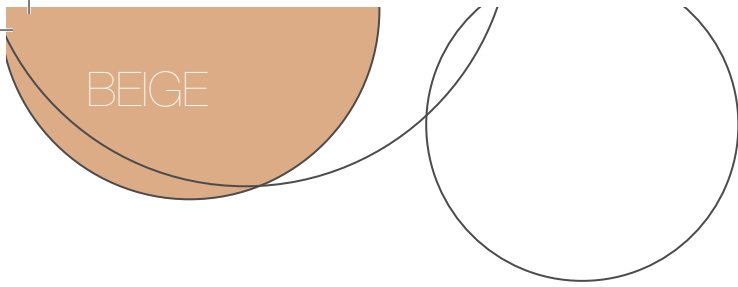


30x60 - 11<sup>13</sup>/<sub>16</sub>"x23<sup>5</sup>/<sub>8</sub>"  
SFT G10K | GRADINO  
GRIGIO CHIARO INCISO



RIVESTIMENTI





26x61 - 9<sup>13</sup>/<sub>16</sub>"x23<sup>3</sup>/<sub>8</sub>" 6  
**SFW 426** | BEIGE S40



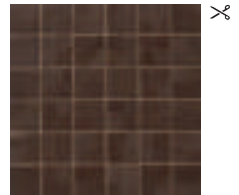
26x61 - 9<sup>13</sup>/<sub>16</sub>"x23<sup>3</sup>/<sub>8</sub>" 4  
**SFW D45** | INSERTO ONDE BEIGE S80



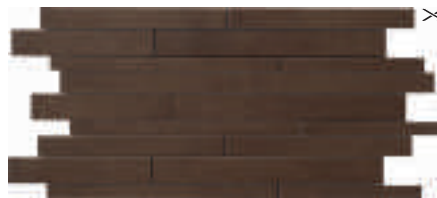
5x61 - 2"x23<sup>3</sup>/<sub>8</sub>" 6  
**SFW X45K** | LISTELLO ONDE BEIGE F20



30x30 - 11<sup>13</sup>/<sub>16</sub>"x11<sup>13</sup>/<sub>16</sub>" 10  
**SFT 667** | MOSAICO 2,5x2,5 D-667A  
 CAFFE R10



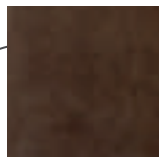
30x30 - 11<sup>13</sup>/<sub>16</sub>"x11<sup>13</sup>/<sub>16</sub>" 10  
**SFT 683** | MOSAICO 5x5 D-687  
 CAFFE R10



30x60 - 11<sup>13</sup>/<sub>16</sub>"x23<sup>3</sup>/<sub>8</sub>" 4  
**SFT 608K** | MATTONCINO CAFFE D-672

**PAVIMENTI COORDINATI SERIE SOFT LOOK**

Matching Floor / Carreaux De Sols Coordonnés / Passende Bodenfliesen / Pavimentos Coordinados.



60x60 - 23<sup>3</sup>/<sub>8</sub>"x23<sup>3</sup>/<sub>8</sub>" 3  
**SFT 660** | CAFFE S20

45x45 - 17<sup>11</sup>/<sub>16</sub>"x17<sup>11</sup>/<sub>16</sub>" 6  
**SFT 606** | CAFFE S15

30x60 - 11<sup>13</sup>/<sub>16</sub>"x23<sup>3</sup>/<sub>8</sub>" 7  
**SFT 066** | CAFFE S15

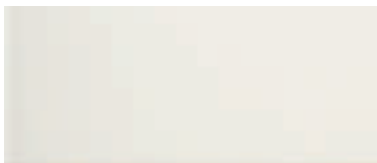
±10 mm  
**cm 26x61**  
 inch 10<sup>1</sup>/<sub>4</sub>x24<sup>1</sup>/<sub>2</sub>"

**White**  
 COLLECTION

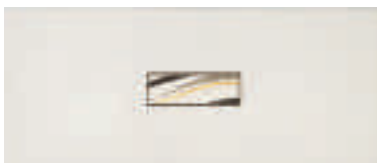


Numero di registrazione  
 IT/21/07

BIANCO



26x61 - 9<sup>13</sup>/<sub>16</sub>"x23<sup>3</sup>/<sub>8</sub>" **6**  
**SFW 826** | BIANCO **540**



26x61 - 9<sup>13</sup>/<sub>16</sub>"x23<sup>3</sup>/<sub>8</sub>" **4**  
**SFW D85** | INSERTO ONDE BIANCO **580**



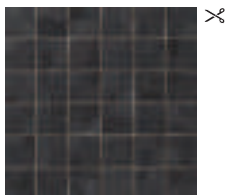
5x61 - 2"x23<sup>3</sup>/<sub>8</sub>" **6**  
**SFW X85K** | LISTELLO ONDE BIANCO **280**



30x30 - 11<sup>13</sup>/<sub>16</sub>"x11<sup>13</sup>/<sub>16</sub>" **10**  
**SFT 997** | MOSAICO 2,5x2,5  
 NERO R10 **0-674**



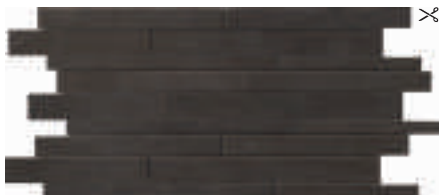
30x30 - 11<sup>13</sup>/<sub>16</sub>"x11<sup>13</sup>/<sub>16</sub>" **10**  
**SFT 227** | MOSAICO 2,5x2,5  
 ANTRACITE R10 **0-674**



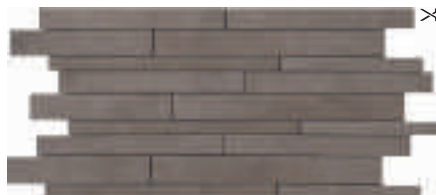
30x30 - 11<sup>13</sup>/<sub>16</sub>"x11<sup>13</sup>/<sub>16</sub>" **10**  
**SFT 983** | MOSAICO 5x5  
 NERO **0-667**



30x30 - 11<sup>13</sup>/<sub>16</sub>"x11<sup>13</sup>/<sub>16</sub>" **10**  
**SFT 283** | MOSAICO 5x5  
 ANTRACITE **0-667**



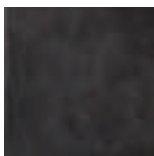
30x60 - 11<sup>13</sup>/<sub>16</sub>"x23<sup>3</sup>/<sub>8</sub>" **4**  
**SFT 908K** | MATTONCINO NERO **0-672**



30x60 - 11<sup>13</sup>/<sub>16</sub>"x23<sup>3</sup>/<sub>8</sub>" **4**  
**SFT 208K** | MATTONCINO ANTRACITE **0-672**

**PAVIMENTI COORDINATI SERIE SOFT LOOK**

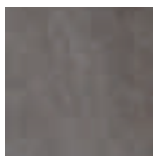
Matching Floor / Carreaux De Sols Coordonés / Passende Bodenfliesen / Pavimentos Coordinados.



60x60 - 23<sup>3</sup>/<sub>8</sub>"x23<sup>3</sup>/<sub>8</sub>" ±11 mm **3**  
**SFT 960** | NERO **520**

45x45 - 17<sup>11</sup>/<sub>16</sub>"x17<sup>11</sup>/<sub>16</sub>" ±10 mm **6**  
**SFT 909** | NERO **515**

30x60 - 11<sup>13</sup>/<sub>16</sub>"x23<sup>3</sup>/<sub>8</sub>" ±10 mm **7**  
**SFT 099** | NERO **515**



60x60 - 23<sup>3</sup>/<sub>8</sub>"x23<sup>3</sup>/<sub>8</sub>" ±11 mm **3**  
**SFT 260** | ANTRACITE **520**

45x45 - 17<sup>11</sup>/<sub>16</sub>"x17<sup>11</sup>/<sub>16</sub>" ±10 mm **6**  
**SFT 202** | ANTRACITE **515**

30x60 - 11<sup>13</sup>/<sub>16</sub>"x23<sup>3</sup>/<sub>8</sub>" ±10 mm **7**  
**SFT 022** | ANTRACITE **515**

**CARATTERISTICHE TECNICHE / TECHNICAL FEATURES / TECHNISCHE EIGENSCHAFTEN**  
 CARACTERISTIQUES TECHNIQUES / CARACTERÍSTICAS TÉCNICAS / ТЕХНИЧЕСКИЕ ХАРАКТЕРИСТИКИ

**\*ANTISLIP**

**ASTM C1028 DRY ≥ 0.70 - WET ≥ 0.65**  
**DIN 51130 R10 - DIN 51097 GRUPPO A+B - PEI 5**  
**B.C.R.A. DRY ≥ 0.55 - WET ≥ 0.60**  
**UNE ENV 12633 Cl.2**

**\*NATURAL**

**DIN 51130 R9 - PEI 5**  
**B.C.R.A. DRY ≥ 0,47 - WET ≥ 0.55**



RESISTENZA ALLA SCIVOLOSITÀ  
 SLIP RESISTANCE  
 RUTSCHFESTIGKEIT  
 CAPACITE ANTIDERAPANTE  
 RESISTENCIA AL DESLIZAMIENTO  
 СОПРОТИВЛЕНИЕ СКОЛЬЖЕНИЮ



PEI TEST  
 RESISTENZA ALL'USURA  
 ABRASION RESISTANCE  
 ABRIEFESTIGKEITGRUPPE  
 RESISTANCE A L'USURE  
 RESISTENCIA AL TRANSITO  
 ИЗНОСОСТОЙКОСТЬ



MODERATA VARIAZIONE  
 MODERATE VARIATION  
 MÄSSIGE ABWEICHUNG  
 VARIATION MODEREE  
 MODERADA VARIACIÓN  
 ОГРАНИЧЕННЫЕ ИЗМЕНЕНИЯ  
**V2**



RESISTENTE AGLI ACIDI  
 ACID RESISTANT  
 SÄUREFESTIGKEIT  
 RESISTANT AUX ACIDES  
 RESISTENCIA A LOS ÁCIDOS  
 КИСЛОТОСТОЙКОСТЬ



RESISTENZA AL GELO  
 FROST RESISTANCE  
 FROSTBESTÄNDIGKEIT  
 RESISTANCE AU GEL  
 RESISTENCIA AL HIELO  
 МОРОЗОСТОЙКОСТЬ



FACILE PULIBILITÀ  
 EASY TO CLEAN  
 PFLEGELEICHT  
 FACILE A NETTOYER  
 FÁCIL DE LIMPIAR  
 ЛЕГКАЯ ЧИСТКА

**IMBALLI E PESI / PACKAGING AND WEIGHTS / VERPACKUNGEN UND GEWICHTE**  
 EMBALLAGES ET POIDS / EMBALAJES Y PESOS / УПАКОВКА И ВЕС





















FORMATO	SCATOLA / BOX			PALLET		
	pz	m2	kg	box	m2	kg
45x90	3	1,23	27,8	30	37,02	834
60x60	3	1,10	23,20	32	35,20	742,4
59,5x59,5	3	1,06	23,17	32	34,05	741,4
45x45	6	1,24	23,00	34	42,16	782
30x60	7	1,28	26,30	40	51,20	1052
26x61	6	0,95	17	60	57,12	1020

TECHNICAL CHARACTERISTICS		TEST METHOD	ANSI 137.1 Values required for glazed impervious porcelain tiles	VALUES GLAZED PORCELAIN
Water absorption (E)		ASTM C373	E ≤ 0,5%	Conforms
Breaking strength (S)		ASTM C648	≥ 250 Lbs	Conforms
Resistance to surface abrasion (PEI)		ASTM C1027	Not required	PEI IV Natural PEI V Antislip
Linear thermal expansion coefficient		ASTM C372	Not required	α ≤ 8 x 10 <sup>-6</sup> °C <sup>-1</sup> α ≤ 4,4 x 10 <sup>-6</sup> °F <sup>-1</sup>
Frost proof		ASTM C1026	No alterations	Resistant
Resistance to chemicals		ASTM C650	Not required	Resistant
Stain resistance		CTI81-7 - Annex D	Not required	Resistant

All Novabell products meet or exceed all standards in ANSI A 137.1.  
 Due to the inherent nature of fired porcelain tile, it is important to note that the coefficient of friction may vary within and between product runs.

Frost-resistant ADA Compliant

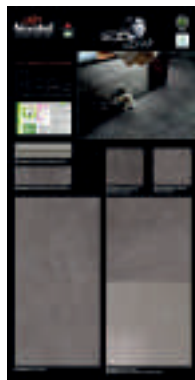


Caratteristiche o proprietà con le deviazioni ammesse Characteristics or properties with allowed deviations Caractéristiques ou propriétés avec les tolérances admises Daten oder Eigenschaften mit zulässigen Abweichungen Característica o propiedades con las desviaciones permitidas		METODO DI PROVA ISO ISO TEST METHOD METHODE D'ESSAI ISO PRÜFMETHODE NACH ISO MÉTODO DE PRUEBA ISO	REQUISITI PRESCRITTI DALLA NORMA EN 14411-G REQUIREMENTS OF EN 1441-G STANDARD CONDITIONS REQUISES PAR LA NORME EN 14411-G ANFORDERUNGEN GEMÄSS DER NORM EN 14411-G REQUISITOS ESTABLECIDOS POR LA NORMA UNE EN ISO14411-G	09315 PORCELAIN TILES 
Resistenza al fuoco Fire Resistance Résistance au feu Feuerbeständigkeit Resistencia al fuego			Ignifugo Fireproof Ignifuge Feuerfest Ignifugo	<b>Classe A1</b>
Cessione di Pb e Cd Lead and cadmium given off by glazed tiles Transfer of Pb and Cd Übertragung von Blei und Cadmium Transferencia de Pb y Cd		ISO 10545/15:2000	Metodo di prova disponibile Test method available Méthode d'essai disponible Verfügbare Prüfmethode Método de prueba disponible	Non cede Pb e Cd Does not yield Pb and Cd Ne donne pas de Pb et Cd Führt nicht zu Pb und Cd No produce Pb y Cd
Indice di radioattività Radioactivity level Index de radioactivité Index der Radioaktivität Indice de radiactividad		UNI 10797:1999	Classe A ≤1,3 - ≤1,0 Classe B ≤1,9 - ≤1,3	Non radioattivo Non-radioactive Non radioactif Nicht radioaktiv No radioactivo
Determinazione della resistenza elettrica Determination of the electrical resistance Détermination de la résistance électrique Bestimmung des elektrischen Widerstandes Determinación resistencia eléctrica		EN 1081		> 2*10 <sup>9</sup>
Determinazione della resistenza di isolamento dei pavimenti e delle pareti Determination of insulation resistance of floors and walls Détermination de la résistance isolant des étages et des murs Bestimmung der Isolationswiderstand der Böden und Wände Determinación resistencia aislamiento de los pavimentos y paredes		CEI 64-8/6 1998:01		Conforme Compliant Conforme Konforme Cumple
Caratteristiche dimensionali Dimensional characteristics Caractéristiques dimensionnelles Maßsigenschaften Características dimensionales		ISO 10545-2:2000	Lunghezza e larghezza - Length and width - Longueur et largeur Länge und Breite - Länge und Breite Spessore - Thickness - Epaisseur - Stärke - Espesor Ortogonalità - Wedging - Orthogonalität - Rechtswinkeligkeit - Ortogonalidad Planarità - Flatness - Planéité - Ebenflächigkeit - Banura ± 0,6 % ± 5% ± 0,6% ± 0,5%	Conforme Compliant Conforme Konforme Cumple
Assorbimento d'acqua Water absorption Absorption d'eau Wasseraufnahme Absorción de agua		ISO 10545-3:2000	E ≤ 0,5%	E 0,2%
Resistenza alla flessione Flexural Strength Résistance à la flexion Biegefestigkeit Módulo de rotura		ISO 10545-4:2000	≥ 35 N/mm <sup>2</sup> min ≥ 355 kg/cm <sup>2</sup>	≥ 50 N/mm <sup>2</sup> ≥ 510 kg/cm <sup>2</sup>
Resistenza all'urto mediante misurazione del coefficiente di restituzione Impact resistance by measurement of coefficient of restitution Résistance au choc par mesurage du coefficient de restitution Bestimmung der Schlagfestigkeit durch Messung des Rückprallkoeffizienten Resistencia al impacto por la medición de coeficiente de restitución		ISO 10545-5:2000	Metodo di prova disponibile Test method available Méthode d'essai disponible Verfügbare Prüfmethode Método de prueba disponible	e > 0,80
Dilatazione termica lineare Linear thermal expansion Dilatation thermique linéaire Linearen thermischen Dehnung Dilatación térmica lineal		ISO 10545-8:2000	Metodo di prova disponibile Test method available Méthode d'essai disponible Verfügbare Prüfmethode Método de prueba disponible	α ≤ 7,1 x 10 <sup>-6</sup> °C <sup>-1</sup>
Resistenza agli sbalzi termici Thermal shock resistance Résistance aux chocs thermiques Temperaturwechselbeständigkeit Resistencia al choque térmico		ISO 10545-9:2000	Metodo di prova disponibile Test method available Méthode d'essai disponible Verfügbare Prüfmethode Método de prueba disponible	Resistente Resistant Résistant Beständig Resistente
Dilatazione dovuta all'umidità Moisture expansion Dilatation à l'humidité Feuchtigkeitsdehnung Expansión debido a la humedad		ISO 10545-10:2000	Metodo di prova disponibile Test method available Méthode d'essai disponible Verfügbare Prüfmethode Método de prueba disponible	≤ 0,06%
Resistenza al cavillo (piastrelle smaltate) Crazing resistance (glazed tiles) Résistance au fissaillement (carreaux émaillés) Widerstandsfähigkeit gegen Glasurrisse (bei den glasierten Fliesen) Resistencia a Resquebrajadura (azulejos esmaltados)		ISO 10545-11:2000	Richiesta Demande Anforderung Solicitud	Resistente Resistant Résistant Beständig Resistente
Resistenza al gelo Frost resistance Résistance au gel Frostbeständigkeit Resistencia al hielo		ISO 10545-12:2000	Richiesta Demande Anforderung Solicitud	Resistente Resistant Résistant Beständig Resistente
Resistenza chimica (acidi e basi a bassa ed alta concentrazione) Chemical resistance (acids and alkalis at low and high concentrations) Résistance chimique (acides et bases à faible et haute concentration) Chemische Beständigkeit (Säuren und Basen bei niedriger und hoher Konzentration) Resistencia química (ácidos y bases en baja y alta concentración)		ISO 10545-13:2000	Piastrelle smaltate - Glazed tiles - Glasierte Fliesen Carreaux émaillés - Azulejos esmaltados	S.C.I.F. Resistente Resistant Résistant Beständig Resistente
Resistenza ai prodotti chimici di uso domestico e additivi per piscina Resistance to Household chemicals and Swimming pool salt Résistance aux produits chimiques ménagers et additifs pour les piscines Beständigkeit gegen Haushaltschemikalien und Zusatzstoffe für Schwimmbäder Resistencia a químicos de uso doméstico y aditivos para piscinas		ISO 10545-13:2000	Piastrelle smaltate - Glazed tiles - Glasierte Fliesen Carreaux émaillés - Azulejos esmaltados	≥ GB Resistente Resistant Résistant Beständig Resistente
Resistenza alle macchie Stains resistance Résistance aux taches Widerstand gegen Flecken Resistencia a las manchas		ISO 10545-14:2000	Piastrelle smaltate - Glazed tiles - Glasierte Fliesen Carreaux émaillés - Azulejos esmaltados	≥ GB Resistente Resistant Résistant Beständig Resistente
Determinazione delle caratteristiche antiscivolo a piedi calzati Method of determination of unpolished and polished slip/skid resistance value Détermination de la valeur de résistance au dérapage/à la glissance des pavés polis ou non polis. Verfahren zur die Abstimmung der Rutschhemmung von Sauber und Unsauber Bodenbelag. Determinación del valor de la resistencia al deslizamiento/estabilimento de los pavimentos pulidos y sin pulir		DIN 51130	Classe Class Classe Klasse Classe	R9 - Natural R10 - Antislip
Determinazione delle proprietà antiscivolo di zone bagnate con calpestio a piedi scalzi Determination of the anti-slip properties - wet loaded barefoot areas Résistance au glissement des surfaces mouillées pour pieds nus Bestimmung der rutschhemmenden Eigenschaft Nassbelästete Barfußbereich Begehungsverfahren Determinación de la resistencia al deslizamiento de las zonas húmedas con pies descalzos		DIN 51097	Classe Class Classe Klasse Classe	A+B - Antislip
Determinazione del coefficiente d'attrito dinamico Determination of the dynamic friction coefficient Détermination du coefficient de frottement dynamique Der Bestimmung der Koeffizient von dynamisch Reibung Determinación del coeficiente de fricción dinámica		B.C.R.A.	cuoio/asciutto - gomma dura bagnata leather / dry - Hard shoe-heeling rubber/wet cuir / sec - gomme / mouillée Leder/trocken - standardsierter harter Gummi / feucht Cuero / seco - goma dura / húmedo	Dry ≥ 0,47 Wet ≥ 0,55 Natural Dry ≥ 0,70 Wet ≥ 0,65 Antislip
Resistenza allo scivolamento Determination of slip/skid resistance value Résistance au glissement Rutschhemmende Eigenschaften Resistencia al deslizamiento		UNE ENV 12633	Classe Class Classe Klasse Classe	2 - Antislip

MERCHANDISING



PG SFT 09  
NERO



PG SFT 02  
ANTRACITE



PG SFT 01  
GRIGIO CHIARO



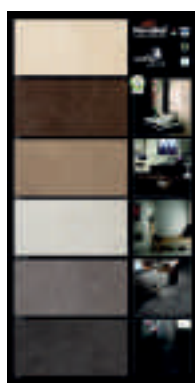
PG SFT 04  
BEIGE



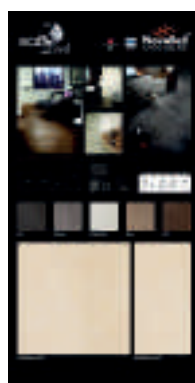
PG SFT 06  
CAFFÈ



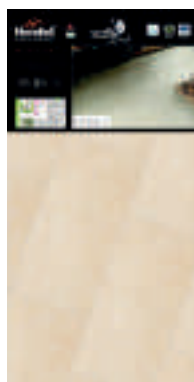
PG SFT 05  
NOCE



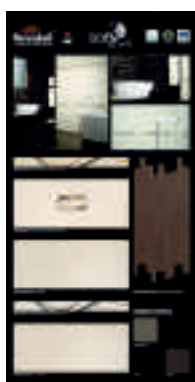
PG SFT FT



PG SFT IT



PG SFT 45

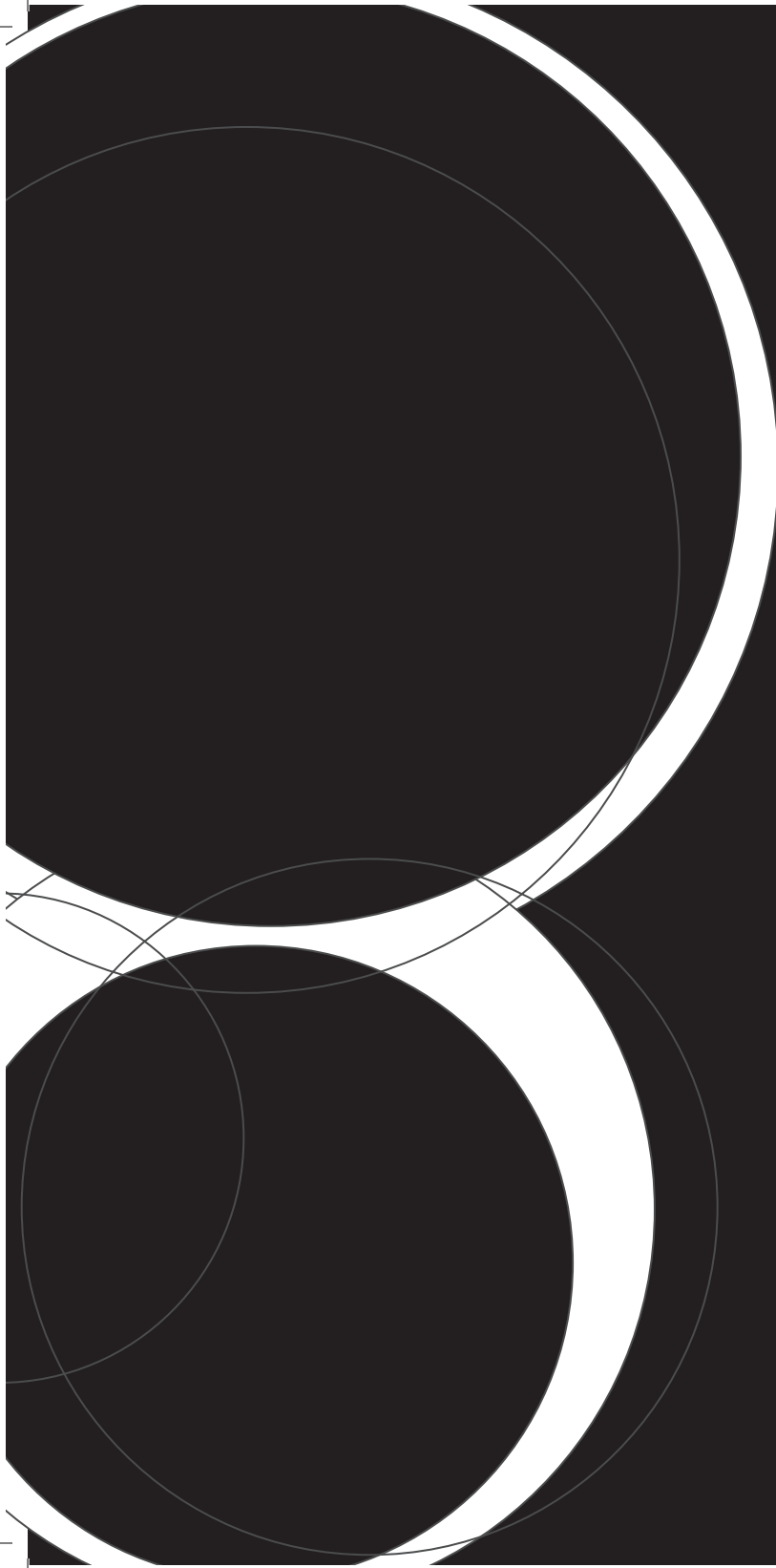


PG SFW FT



Scaletta  
Cradle  
Escalier  
Leiter  
Escalerilla

SCA8SFT



“Ceramics of Italy”  
Ceramics of Italy



Numero Verde Italy  
800 212 110

  
**NovaBell**<sup>®</sup>  
Ceramiche Gruppo Bellei  
[www.novabell.com](http://www.novabell.com)

**NOVABELL S.p.A. CERAMICHE ITALIANE**  
Via Molino, 1 - 42014 ROTEGLIA (RE) ITALY  
Tel. +39 0536 861111 - Fax +39 0536 851205  
e-mail : [info@novabell.it](mailto:info@novabell.it) - [export@novabell.it](mailto:export@novabell.it)  
[italia@novabell.it](mailto:italia@novabell.it)



COD. POKKSFT

