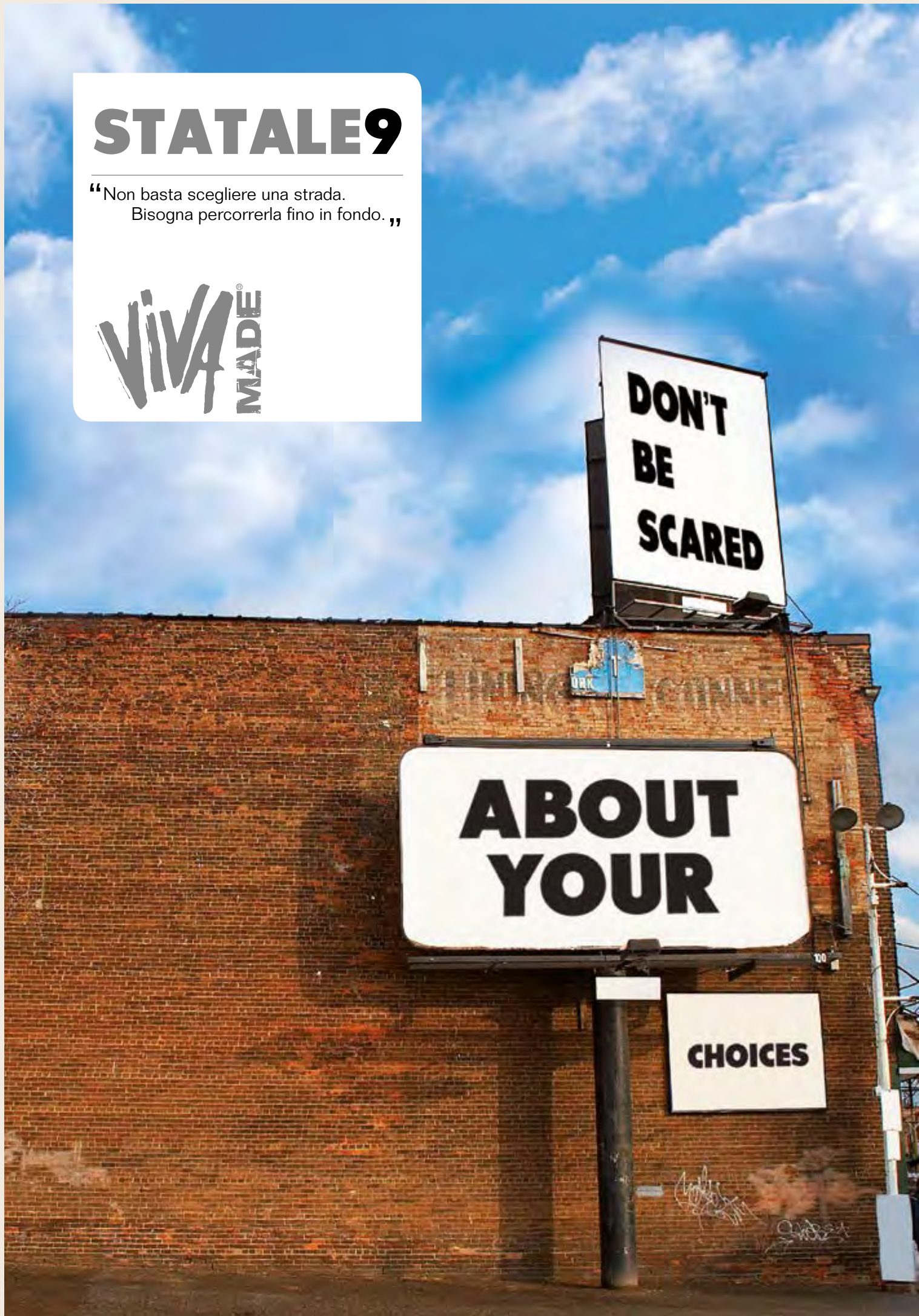


STATALE9

“Non basta scegliere una strada.
Bisogna percorrerla fino in fondo.”

VIVA
MADE





DON'T CARE ABOUT MASS TASTE







MIX PROJECT

601S8R GRIGIO CEMENTO WET 60X60 (23⁵/₈"x23⁵/₈")
601R8R GRIGIO CEMENTO WORK 60X60 (23⁵/₈"x23⁵/₈")
601M8R GRIGIO CEMENTO TEXTURE 60X60 (23⁵/₈"x23⁵/₈")



981R8R GRIGIO CEMENTO WORK 60X120 (23³/₈"x47¹/₄") - 530D9R FUMO 15X120 (57⁸/₈"x47¹/₄")





314
30048752

I've
Thinkin

la carta del
tatuato
Pony

601SOR BIANCO CALCE WET 60X60 (23" x 23") - 541SOR5 STREET BIANCO CALCE 20X120 (77" x 47")





981M8R GRIGIO CEMENTO TEXTURE 60X120 (23^{5/8} x 47^{1/4})





540D3R PAGLIA 20x120 (77⁸/₁₆ x 47¹⁴/₁₆) - 530D3R PAGLIA 15x120 (57⁸/₁₆ x 47¹⁴/₁₆)
530D3RB PAGLIA METROPOLI 15x120 (57⁸/₁₆ x 47¹⁴/₁₆)





530D8R VAPORE 15X120 (57" x 47 1/4")
540D8R VAPORE 20X120 (77" x 47 1/4")







VAPORE - METROPOLI VAPORE



981M8R GRIGIO CEMENTO TEXTURE 60X120 (23^{5/8} x 47^{1/4}) - 540D8R VAPORE 20X120 (7^{7/8} x 47^{1/4})



530DOR ARIA 15x120 (57⁸ x 47¹⁴)
530DORB ARIA METROPOLI 15x120 (57⁸ x 47¹⁴)



540D8R VAPORE 20X120 (7'8" x 47'1/4")
540D9R FUMO 20X120 (7'8" x 47'1/4")



HEY, ARE YOU
FOLLOWING
YOUR INSTINCT?










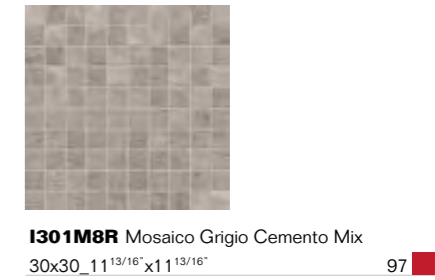
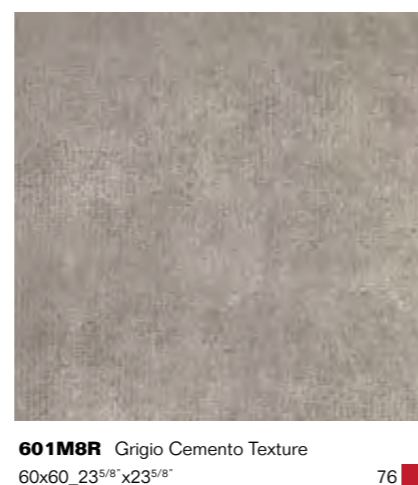
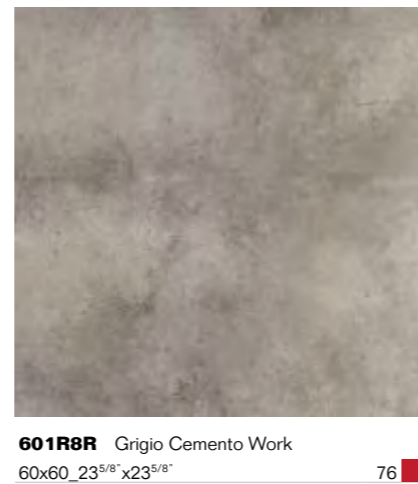
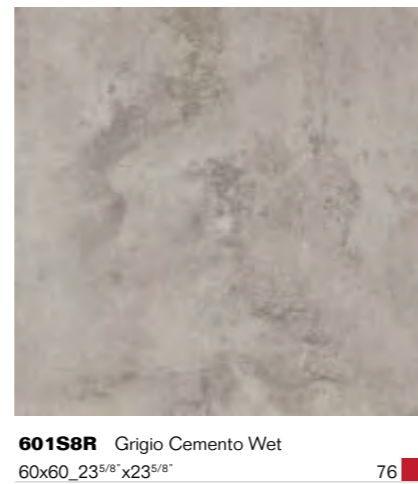
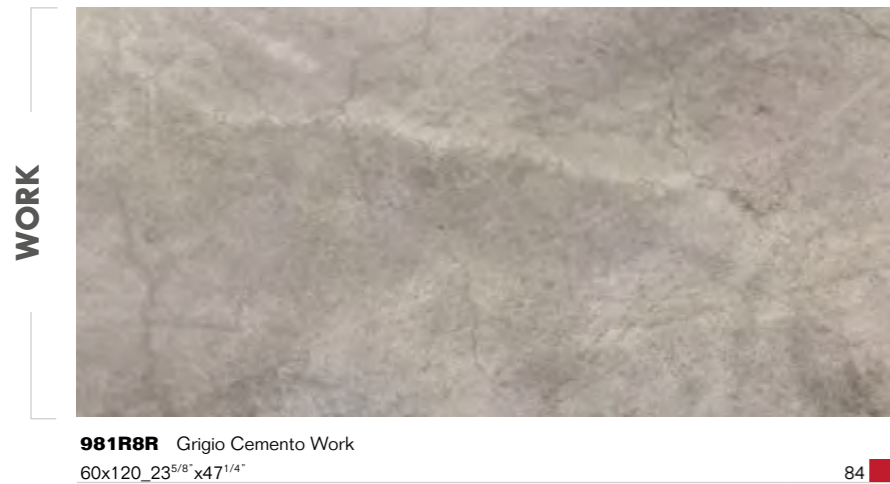
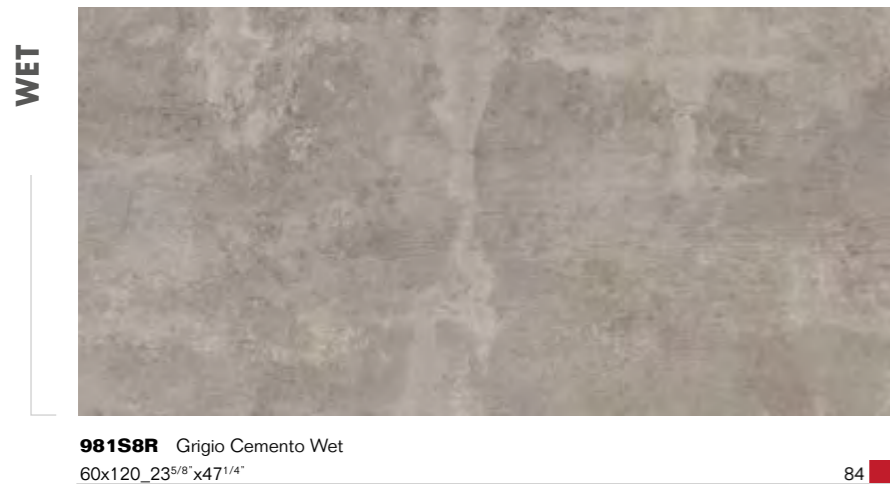
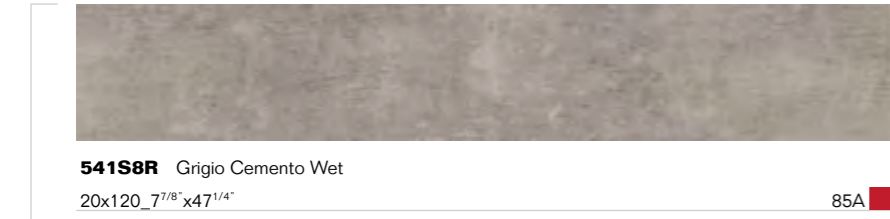
981SOR BIANCO CALCE WET 60X120 (23^{5/8} x 47^{1/4})
530D8R VAPORE 15X120 (57^{8/8} x 47^{1/4})
530D8RB METROPOLI VAPORE 15X120 (57^{8/8} x 47^{1/4})

PIET HEIN EEK
dutchtub

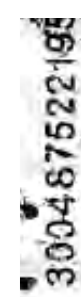
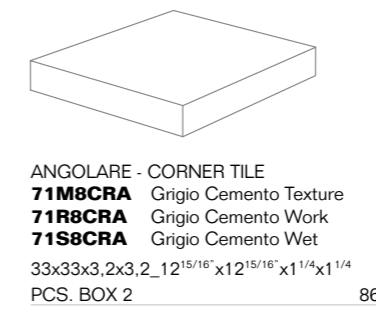
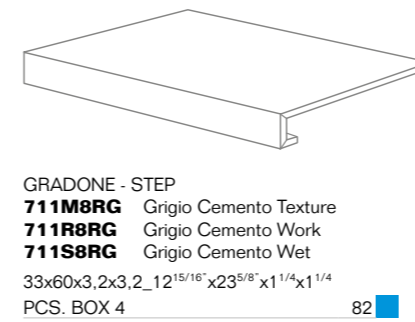




SOMETIMES
LEAVE
AND LET
YOUR
BRAIN
BREATHE



Pezzi speciali TRIMS / PIECES SPECIALES / FORMTEILE / PIEZAS ESPECIALES / СПЕЦИАЛЬНЫЕ ИЗДЕЛИЯ





541S0R Bianco Calce Wet
20x120_7^{7/8} x47^{1/4}"

85A



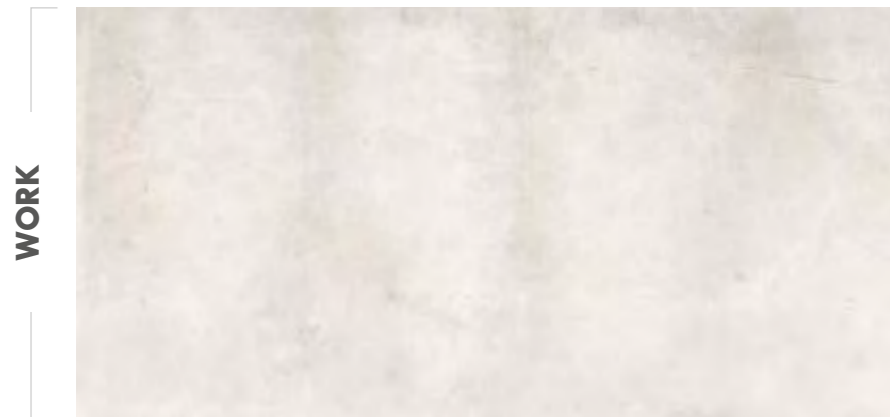
981S0R Bianco Calce Wet
60x120_23^{5/8} x47^{1/4}"

84



601S0R Bianco Calce Wet
60x60_23^{5/8} x23^{5/8}"

76



981R0R Bianco Calce Work
60x120_23^{5/8} x47^{1/4}"

84



601R0R Bianco Calce Work
60x60_23^{5/8} x23^{5/8}"

76



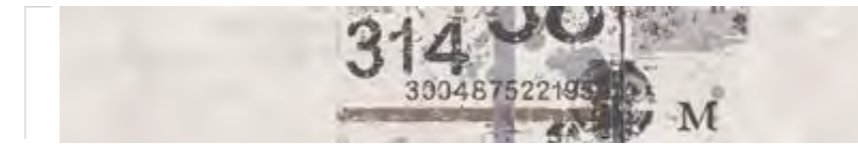
981M0R Bianco Calce Texture
60x120_23^{5/8} x47^{1/4}"

84



601M0R Bianco Calce Texture
60x60_23^{5/8} x23^{5/8}"

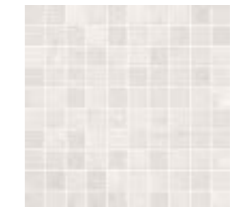
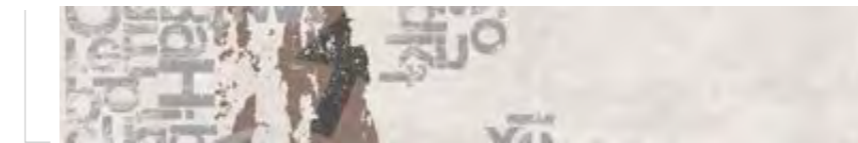
76



541S0RS Bianco Calce Street
20x120_7^{7/8} x47^{1/4}"
PCS. BOX 3

82

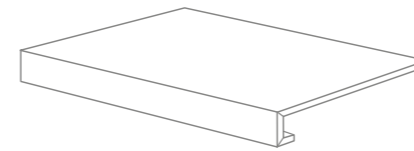
STREET



I301M0R Mosaico Bianco Calce Mix
30x30_11^{13/16} x11^{13/16}"

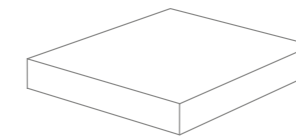
97

Pezzi speciali TRIMS / PIECES SPECIALES / FORMTEILE / PIEZAS ESPECIALES / СПЕЦИАЛЬНЫЕ ИЗДЕЛИЯ



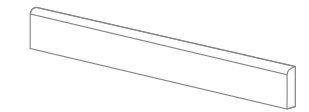
GRADONE - STEP
711M0RG Bianco Calce Texture
711R0RG Bianco Calce Work
711S0RG Bianco Calce Wet
33x60x3,2x3,2_12^{15/16} x23^{5/8} x1^{1/4} x1^{1/4}"
PCS. BOX 4

82



ANGOLARE - CORNER TILE
71M0CRA Bianco Calce Texture
71R0CRA Bianco Calce Work
71S0CRA Bianco Calce Wet
33x33x3,2x3,2_12^{15/16} x12^{15/16} x1^{1/4} x1^{1/4}"
PCS. BOX 2

86



BATTISCOPA - SKIRTING
871M0R Bianco Calce Texture
871R0R Bianco Calce Work
871S0R Bianco Calce Wet
7,5x60_2^{15/16} x23^{5/8}"
PCS. BOX 15

10

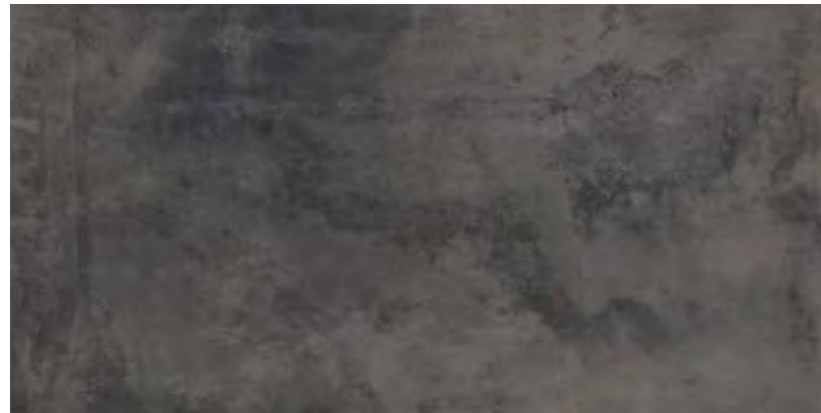


WET



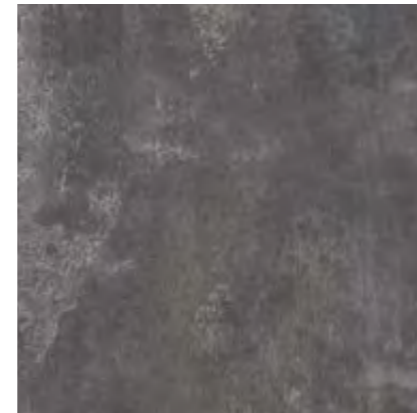
541S9R Nero Carbone Wet
20x120_7^{7/8}"x47^{1/4}"

85A



981S9R Nero Carbone Wet
60x120_23^{5/8}"x47^{1/4}"

84



601S9R Nero Carbone Wet
60x60_23^{5/8}"x23^{5/8}"

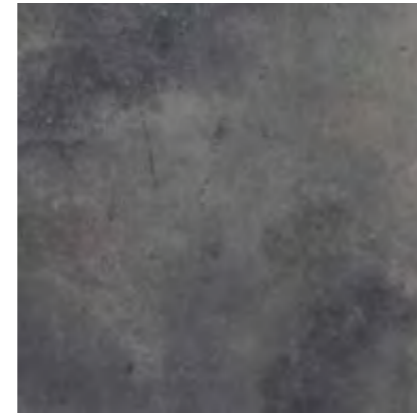
76

WORK



981R9R Nero Carbone Work
60x120_23^{5/8}"x47^{1/4}"

84



601R9R Nero Carbone Work
60x60_23^{5/8}"x23^{5/8}"

76

TEXTURE



981M9R Nero Carbone Texture
60x120_23^{5/8}"x47^{1/4}"

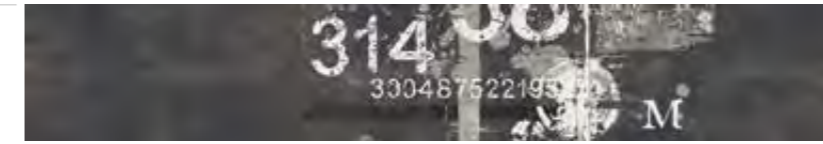
84



601M9R Nero Carbone Texture
60x60_23^{5/8}"x23^{5/8}"

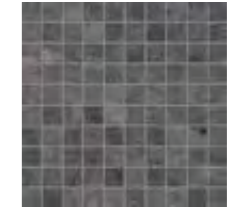
76

STREET



541S9RS Nero Carbone Street
20x120_7^{7/8}"x47^{1/4}"
PCS. BOX 3

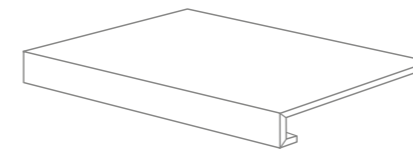
82



I301M9R Mosaico Nero Carbone Mix
30x30_11^{13/16}"x11^{13/16}"

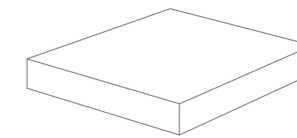
97

Pezzi speciali TRIMS / PIECES SPECIALES / FORMTEILE / PIEZAS ESPECIALES / СПЕЦИАЛЬНЫЕ ИЗДЕЛИЯ



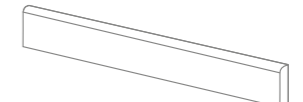
GRADONE - STEP
711M9RG Nero Carbone Texture
711R9RG Nero Carbone Work
711S9RG Nero Carbone Wet
33x60x3,2x3,2_12^{15/16}"x23^{5/8}"x1^{1/4}"x1^{1/4}"
PCS. BOX 4

82



ANGOLARE - CORNER TILE
71M9CRA Nero Carbone Texture
71R9CRA Nero Carbone Work
71S9CRA Nero Carbone Wet
33x33x3,2x3,2_12^{15/16}"x12^{15/16}"x1^{1/4}"x1^{1/4}"
PCS. BOX 2

86



BATTISCOPA - SKIRTING
871M9R Nero Carbone Texture
871R9R Nero Carbone Work
871S9R Nero Carbone Wet
7,5x60_2^{15/16}"x23^{5/8}"
PCS. BOX 15

10

WET 40% / WORK 40% / TEXTURE 20%





314
300487522193

M
22

FUMO

60

22

M
314
300487522193

**Formati
Decori** SIZES / FORMATS / FORMATE / TAMAÑOS / ФОРМАТЫ
DECORS / DECORS / DECORE / DECORADOS / ДЕКОРЫ

LEGNI



540D0R Aria
20x120_7⁷/₈"x47¹/₄" 85A



530D0R Aria
15x120_5⁷/₈"x47¹/₄" 85A

LEGNI



540D3R Paglia
20x120_7⁷/₈"x47¹/₄" 85A



530D3R Paglia
15x120_5⁷/₈"x47¹/₄" 85A

LEGNI



540D8R Vapore
20x120_7⁷/₈"x47¹/₄" 85A



530D8R Vapore
15x120_5⁷/₈"x47¹/₄" 85A

LEGNI



540D9R Fumo
20x120_7⁷/₈"x47¹/₄" 85A



530D9R Fumo
15x120_5⁷/₈"x47¹/₄" 85A



METROPOLI



530D0RB Aria Metropoli
 15x120_5⁷/₈" x 47¹/₄"
 PCS. BOX 4

82

METROPOLI



530D3RB Paglia Metropoli
 15x120_5⁷/₈" x 47¹/₄"
 PCS. BOX 4

82

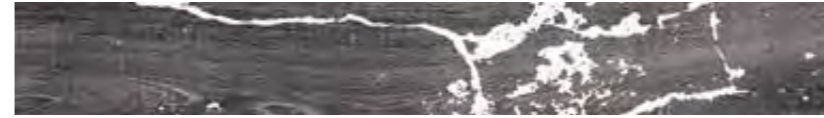
METROPOLI



530D8RB Vapore Metropoli
 15x120_5⁷/₈" x 47¹/₄"
 PCS. BOX 4

82

METROPOLI



530D9RB Fumo Metropoli
 15x120_5⁷/₈" x 47¹/₄"
 PCS. BOX 4

82





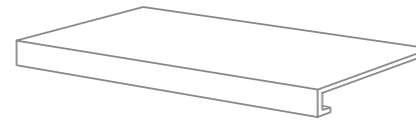
530D8RC Vapore Lime Metropoli
 15x120_5^{7/8} x 47^{1/4}
 PCS. BOX 4

82



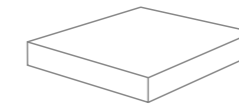
530D9RC Fumo Orange Metropoli
 15x120_5^{7/8} x 47^{1/4}
 PCS. BOX 4

82



GRADONE - STEP
 33x120x3,2x3,2 - 12^{15/16} x 47^{1/4} x 1^{1/4} x 1^{1/4}
CR0D0R Aria Nat. Rett.
CR0D3R Paglia Nat. Rett.
CR0D8R Vapore Nat. Rett.
CR0D9R Fumo Nat. Rett.
 PCS. BOX. 2

96



ANGOLARE - CORNER TILE DX / SX
 33x33x3,2x3,2 - 12^{15/16} x 12^{15/16} x 1^{1/4} x 1^{1/4}
A0D0CRD / A0D0CRS Aria Nat. Rett.
A0D3CRD / A0D3CRS Paglia Nat. Rett.
A0D8CRD / A0D8CRS Vapore Nat. Rett.
A0D9CRD / A0D9CRS Fumo Nat. Rett.
 PCS. BOX. 2

86



BATTISCOPA - SKIRTING
 7,5x60 - 2^{15/16} x 23^{5/8}
870D0R Aria Nat. Rett.
870D3R Paglia Nat. Rett.
870D8R Vapore Nat. Rett.
870D9R Fumo Nat. Rett.
 PCS. BOX. 15

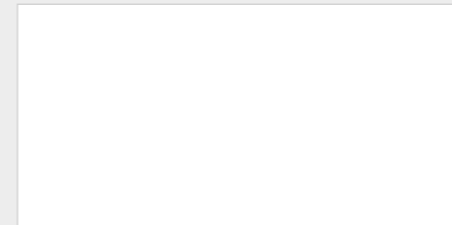
10

AntiSlip

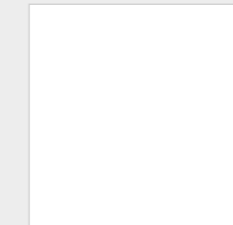
R11 - B (A+B)

*Prodotto antiscivolo adatto a tutte le applicazioni interne ed esterne

WET - WORK - TEXTURE



60x120_23^{5/8} x 47^{1/4} **Grigio - Bianco - Nero**



60x60_23^{5/8} x 23^{5/8} **Grigio - Bianco - Nero**

WET

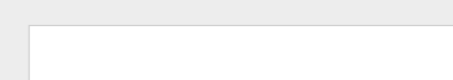


20x120_7^{7/8} x 47^{1/4} **Grigio - Bianco - Nero**

LEGNI



20x120_7^{7/8} x 47^{1/4} **Aria - Paglia - Vapore - Fumo**



15x120_5^{7/8} x 47^{1/4} **Aria - Paglia - Vapore - Fumo**

* Anti-slip product which is suitable for all internal and external applications. - Produit antidérapant spécialement conçu pour toute application à l'intérieur et à l'extérieur. - Anti-Rutsch-Produkt, geeignet für alle Innen- und Außenanwendungen. - Producto antideslizante apto para todas las aplicaciones, en interiores y exteriores. - Нескользящий материал, пригодный для всех внутренних и внешних покрытий.

CARATTERISTICHE TECNICHE Technical Features - Caracteristiques Techniques Technische Eigenschaften - Caracteristicas Tecnicas - Технические Характеристики	NORMA Standard - Norme Norm - Norma - Норма	VALORI Value - Valeur Vorgabe - Valor - Средние
PLANARITÀ Flatness - Planéité - Ebenflächigkeit - Planiyud - Плоскостность	UNI EN ISO 10545/2	± 0,25% / ± 1,5mm
	ASTM C485 Warpage	
	Calibrated ± 0,75% (max ± 0,09 in)	-
	Rectified ± 0,40% (max ± 0,05 in-size ≤ 60cm) (max ± 0,07 in-size > 60cm)	± 0,25% (max ± 0,05 in-size ≤ 60cm) (max ± 0,07 in-size > 60cm)
ASSORBIMENTO D'ACQUA - Valore medio in % Water absorption - Average value expressed in % Absorption d'eau - Valeur moyenne en % Wasseraufnahme - Durchschnittswert in % Absorción de agua - Valor medio en % - Поглощение воды	UNI EN ISO 10545/3 ≤ 0,5 % ASTM C373	Conforme Compliant
RESISTENZA ALLA FLESSIONE Modulus of rupture - Resistance a la flexion Biegefestigkeit - Resistencia a la flexion - Прочность на изгиб	UNI EN ISO 10545/4	≥ 50 N/mm²
FORZA DI ROTTURA Breaking strength - Résistance à la rupture Bruchlast - Resistencia a la rotura - Разрывное усилие	UNI EN ISO 10545/4 ASTM C648	≥ 2000 N 700 LBS
RESISTENZA ALL'ABRASIONE PROFONDA Abrasion resistance - Résistance à l'abrasion profonde - Tiefenabriebfestigkeit Resistencia a la abrasion profunda - Стойкость к глубокому истиранию	UNI EN ISO 10545/6 ASTM C1243	Conforme (CEMENTI) Compliant (CEMENTI)
RESISTENZA ALL'ABRASIONE - PEI Surface abrasion PEI - Résistance à l'abrasion PEI - Abriebfestigkeit PEI Resistencia a la abrasion PEI - Стойкость к истиранию PEI	UNI EN ISO 10545/7 ASTM C1027	PEI 4 (6000 cycles) (LEGNI) IV (LEGNI)
RESISTENZA AL GELO Frost resistance - Résistance au gel - Frostbeständigkeit Resistencia a las heladas - Морозостойкость	UNI EN ISO 10545/12 ASTM C1026	Conforme Unaffected
RESISTENZA CHIMICA ad alte e basse concentrazioni di acidi e basi Chemical resistance to high and low acid and basic concentrations Résistance chimique aux hautes et basses concentrations d'acides et de bases Chemikalienfestigkeit bei hohen und niedrigen Konzentrationen von Säuren und Basen Resistencia química con concentraciones altas y bajas de ácidos y bases Химическая стойкость к высоким и низким концентрациям кислот и щелочей	UNI EN ISO 10545/13 ASTM C-650	CEMENTI LEGNI UA - ULA GA - GLA - GHA Unaffected Unaffected
RESISTENZA ALLE MACCHIE Stain resistance - Résistance aux taches - Fleckenbeständigkeit Resistencia a las manchas - Стойкость к образованию пятен	UNI EN ISO 10545/14 CTI 81-7D	5 No Evident Variation
COEFFICIENTE DI ATTRITO Slip resistance - Coefficient de glissement - Rutschfestigkeit Barfußbereich Coeficiente de atrito medio - Коэффициент трения	DIN 51130 DIN 51097 ANSI A 137.1- 2012 DCOF (Section 9.6) B.C.R.A.	CEMENTI LEGNI R11 R11 B (A+B) B (A+B) Dry ≥ 0,42 Wet ≥ 0,42 Dry ≥ 0,42 Wet ≥ 0,42 ≥ 0,40 ≥ 0,40

SHADE VARIATION V3 High

7,5% 放射性水平A类

Per maggiori chiarimenti sui dati tecnici e sulla garanzia consultare il catalogo generale in vigore.
For further information on technical specifications, please consult our up-dated general catalogue
Pour toutes informations supplémentaires sur les données techniques et sur les garanties, veuillez consulter le catalogue general en vigueur.
Für weitere Informationen über technische Daten und Garantie beziehen sie sich bitte auf den aktuellen Gesamtkatalog.
Para ulteriores informaciones sobre los datos técnicos y la garantía, vease el catalogo general en vigor.
Более подробную информацию о технических данных и гарантии смотрите в действующем сводном катал.

IMBALLI E PESI Packing and weight - Emballages et poids - Verpackung und gewicht - Embalajes y pesos - УПАКОВКА И ВЕС									
Articolo Item Reference Artikel Articulo Артикула	Formato (cm) Size (cm) Format (cm) Format (cm) Тamaño (cm) Формат (cm)	Spessore (mm) Thickness (mm) Epaisseur (mm) Stärke (mm) Espesor (mm) Толщина (mm)	Pz. x Mq. Pieces x Sqm Pcs / M² Stk. x Qm Pzs x Mc. Шт. x Кв.М.	Pz. x Scat. Pieces x Box Pcs / Bte Stk. x Krt. Pzs x Caja Шт. x Кор.	Mq. x Scat. Sqm x Box M² / Bte Qm x Krt. Mc. x Caja Кв.М. x Кор.	Peso x Scat. (Kg) Weight x Box (Kg) Poids / Bte (Kg) Gewicht x Krt. (Kg) Peso x Caja (Kg) Вес x Кор. (Kg)	Scat. x Pal. Boxes x Pal. Bte / Pal. Krt. x Pal. Cajas x Pal. Кор. x Подд.	Mq. x Pal. Sqm x Pal. M² / Pal. Qm x Pal. Mc. x Pal. Кв.М x Подд.	Peso x Pal. (Kg) Weight x Pal. (Kg) Poids / Pal. (Kg) Gewicht x Pal. (Kg) Peso x Pal. (Kg) Вес x Подд (Kg)
601R/M/S_R	60x60	10	2,78	3	1,08	25,00	40	43,20	1000
981R/M/S_R	60x120	10	1,39	2	1,44	35,00	22	31,68	770
541S_R	20x120	10	4,17	4	0,96	23,50	36	34,56	846
540D_R	20x120	10	4,17	4	0,96	23,50	36	34,56	846
530D_R	15x120	10	5,56	6	1,080	22,40	32	34,56	717
I301M_R	30x30	10	11,11	5	0,45	10,50	-	-	-

VIVA MADE

a brand of EMILCERAMICA S.p.A.

UNI EN ISO 9001:2008
UNI EN ISO 14001:2004
BS OHSAS 18001:2007



**VIVA
MADE**

a brand of EMILCERAMICA S.p.A.
Sede amministrativa/commerciale:
Via Ghiarola Nuova, 29/33
41042 Fiorano Modenese (MO) Italy
Tel. +39 0536 998701 - Fax +39 0536 998702
info@emilceramicagroup.it - www.cerviva.it