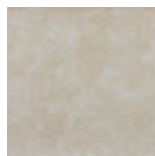


STONE

Esmaltados Glazed Tiles





Beige



Gris



ESMALTADO
GLAZED



Características dimensionales
Dimension tolerance

<1,25% ·
máx 2 mm.



Absorción de agua
Water absorption

3<E≤6%



Coef. Dilatación térmica lineal
Linear thermal expansion coefficient

3,8x10⁻⁶°C⁻¹



Resistencia a la flexión
Breaking Strength

20N/mm²



Resistencia a la abrasión superficial
Resistance to surface abrasion

Gris PEI 3
Beige PEI4



Resistencia a las manchas
Resistance to stains

clase 5
CLASS 5



Péndulo (CTE)
Not required out of Spain

clase 2
CLASS 2



A pie descalzo
Barefoot slip resistance

B



A pie calzado
Slip resistance with footwear

R10



Resistencia al cuarteo
Crazing resistance

si/yes



Extrusión
Extruded tiles

✓



Resistencia a la helada
Frost resistance

✓



Resistencia al choque térmico
Resistance to thermal shock

✓



Resistencia química
Chemical resistance

✓

STONE

Colores / Colors



Beige



Decorado/Decor Beige



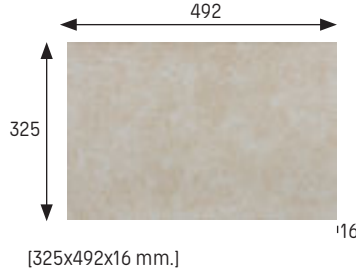
Gris



Decorado/Decor Gris

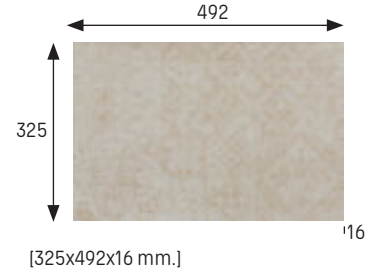
Base 33x50 Tile 33x50

Beige Cod. 902925 · [MC555]
Gris Cod. 902932 · [MC555]



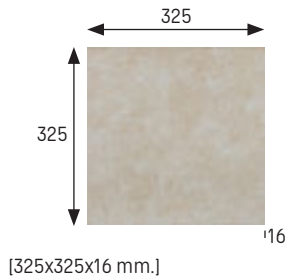
Base Decorados 33x50 Decor Tile 33x50

Beige Cod. 902931 · [MC555]
Gris Cod. 902938 · [MC555]



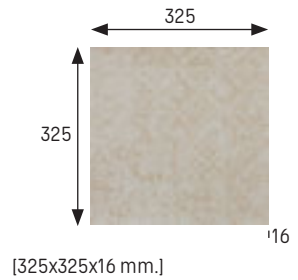
Base 33x33 Tile 33x33

Beige Cod. 902961 · [MC510]
Gris Cod. 902960 · [MC510]



Base Decorados 33x33 Decor Tile 33x33

Beige Cod. 902965 · [MC510]
Gris Cod. 902964 · [MC510]



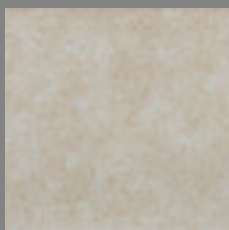
	Espesor (mm) Thickness (mm)	U.M.*	U.M./caja U.M./box	U.M./Palet U.M./Pallet	Pzs./U.M. Pcs./U.M.	Pzs./caja Pcs/box	Kg./U.M. Kg./U.M.	Kg./caja Kg./box	Kg./Palet Kg./Pallet
Base/decorados 33x50 Decor/Tile 33x50	16	m ² sqm	0,66	42,624	6	4	31,26	20,83	1348
Base/decorados 33x33 Decor/Tile 33x33	16	m ² sqm	0,66	42,624	9	6	32,6	21,75	1391

*Unidad de Medida. Los artículos medidos en M² o ML se sirven contando la junta normal entre piezas
 *Unit of measure. Items measured in SQM or LM are delivered assuming average joint between pieces



STONE **Piezas especiales** Special pieces

Colores / Colors



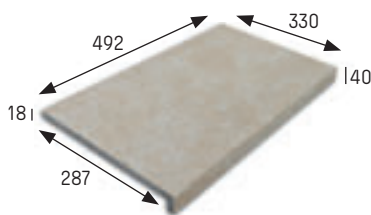
Beige



Gris

Peldaño recto 50 Straight stair-tread 50

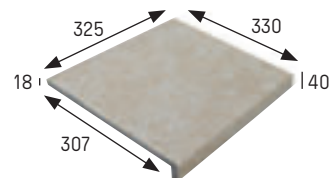
Beige Cod. 902926 · [PZ355]
Gris Cod. 902933 · [PZ355]



[492x330x18 mm.]

Peldaño recto 33 Straight stair-tread 33

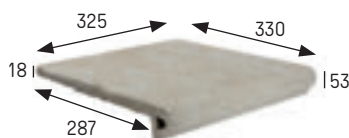
Beige Cod. 902963 · [PZ275]
Gris Cod. 902962 · [PZ275]



[330x325x40 x18 mm.]

Peldaño redondeado 33 Rounded stair-tread 33

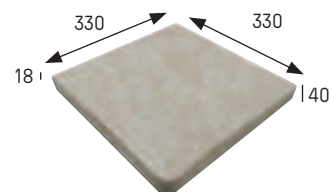
Beige Cod. 901510 · [PZ270]
Gris Cod. 903548 · [PZ270]



[325x330x18 mm.]

Esquina recta Straight stair-tread corner

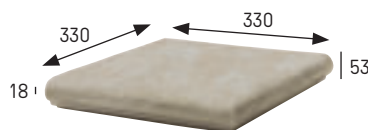
Beige Cod. 902927 · [PZ555]
Gris Cod. 902934 · [PZ555]



[330x330x40 x18 mm.]

Esquina redondeada Rounded stair-tread corner

Beige Cod. 901511 · [PZ555]
Gris Cod. 903549 · [PZ555]



[330x330x18 mm.]

Rodapié Skirting board

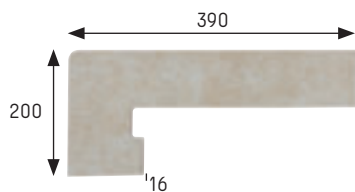
Beige Cod. 902928 · [ML150]
Gris Cod. 902935 · [ML150]



[325x80x16 mm.]

Zanquín izda. String left side *

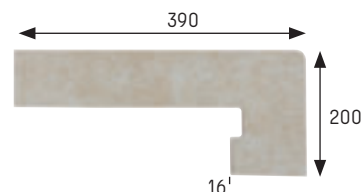
Beige Cod. 902929 · [PZ150]
Gris Cod. 902936 · [PZ150]



[390x80/200x100 x16 mm.]

Zanquín dcha. String right side *

Beige Cod. 902930 · [PZ150]
Gris Cod. 902937 · [PZ150]



[390x80/200x100 x16 mm.]



Stone Beige

	Espesor (mm) Thickness (mm)	U.M.*	U.M./caja U.M./box	U.M./Palet U.M./Pallet	Pzs./U.M. Pcs./U.M.	Pzs./caja Pcs/box	Kg./U.M. Kg./U.M.	Kg./caja Kg./box	Kg./Palet Kg./Pallet
Peldaño recto 50 Straight stair-tread 50	18	Pz. Pc.	4	144	1	4	6,33	25,3	911
Peldaño recto 33 Straight stair-tread 33	18	Pz. Pc.	6	216	1	6	4,6	27,6	994
Peldaño redondeado 33 Rounded stair-tread 33	18	Pz. Pc.	6	216	1	6	4,4	26,4	950
Esquina recta Straight stair-tread corner	18	Pz. Pc.	2	60	1	2	5,07	10,15	319
Esquina redondeada Rounded stair-tread corner	18	Pz. Pc.	2	60	1	2	6	12	360
Rodapié Skirting board	16	ml lm	8	576	3	24	2,3	18,4	1325
Zanquín izda. String left	16	Pz. Pc.	10	300	1	10	1,3	13	390
Zanquín dcha. String right	16	Pz. Pc.	10	300	1	10	1,3	13	390

*Unidad de Medida. Los artículos medidos en M² o ML se sirven contando la junta normal entre piezas
 *Unit of measure. Items measured in SQM or LM are delivered assuming average joint between pieces