

# STONEBOX

## CONCEPT

36 Tipologie di pietre differenti in armonia cromatica.

36 different types of stones combined in a perfect colour match.

36 différents types de pierres proposés dans des superbes combinaisons de couleurs.

36 verschiedene Steinarten mit unterschiedlicher chromatischer Harmonie.

36 tipos diferentes de piedra en armonía cromática.

36 разных типологий камней в хроматической гармонии.

### E1UJ 917F1BR

Tea Sand Concept Nat. Rett.  
15x90 - 5<sup>7/8</sup>"x35<sup>7/16</sup>"

### E1UQ 947F1BR

Tea Sand Concept Nat. Rett.  
45x90 - 17<sup>11/16</sup>"x35<sup>7/16</sup>"

## COLORI/FORMATI

COLOURS / SIZES - COULEURS / FORMATS - FARBEN / FORMATE - COLORES / TAMAÑOS - ЦВЕТА / ФОРМАТЫ

# Bright Grey Concept

140



45x90 - 17<sup>11/16</sup>"x35<sup>7/16</sup>"

**E1US 947F8BR** Naturale Rett.

● 74

**E1UR 947F8BP** Lappato Rett.

● 82



30x60 - 11<sup>13/16</sup>"x23<sup>5/8</sup>"

**E1YW 637F8BR** Naturale Rett. ● 61

**E1YV 637F8BP** Lappato Rett. ● 73



15x90 - 5<sup>7/8</sup>"x35<sup>7/16</sup>"

**E1UK 917F8BR** Naturale Rett.

● 771

**E1V2 917F8BP** Lappato Rett.

● 83

# Sugar White Concept



45x90 - 17<sup>11/16</sup>"x35<sup>7/16</sup>"

**E1UN 947F0BR** Naturale Rett.

● 74

**E1UM 947F0BP** Lappato Rett.

● 82



30x60 - 11<sup>13/16</sup>"x23<sup>5/8</sup>"

**E1YS 637F0BR** Naturale Rett. ● 61

**E1YR 637F0BP** Lappato Rett. ● 73



15x90 - 5<sup>7/8</sup>"x35<sup>7/16</sup>"

**E1UH 917F0BR** Naturale Rett.

● 771

**E1V1 917F0BP** Lappato Rett.

● 83

Consigli di posa: per ottenere un risultato estetico ottimale, miscelare il materiale di scatole differenti. - Laying suggestions: to obtain excellent aesthetic results, it is recommended to mix the materials contained in different boxes. - Conseils de pose: pour obtenir d'excellents résultats du point de vue esthétique, mélangez les matériaux contenus dans des boîtes différentes. - Empfehlung für die Verlegung: um ein optimales ästhetisches Ergebnis zu erzielen, das Material der verschiedenen Schachteln mischen. - Consejos para la colocación: para obtener un resultado estético óptimo, mezclar el material de cajas diferentes. - Советы по укладке: Для достижения оптимального эстетического результата, рекомендуется смешивать материал из разных коробок.

Si consiglia la posa con fuga 2 mm. - Laying with a 2 mm-joint is recommended. - Pose recommandée avec joints de 2 mm.

Es wird eine Fugenbreite von 2 mm empfohlen. - Se recomienda la colocación con juntas de 2 mm. - Рекомендується укладка с швом 2 мм.

## COLORI/FORMATI

COLOURS / SIZES - COULEURS / FORMATS - FARBEN / FORMATE - COLORES / TAMAÑOS - ЦВЕТА / ФОРМАТЫ

# Tea Sand Concept



45x90 - 17<sup>11/16</sup>"x35<sup>7/16</sup>"

**E1UQ 947F1BR** Naturale Rett.

● 74

**E1UP 947F1BP** Lappato Rett.

● 82



30x60 - 11<sup>13/16</sup>"x23<sup>5/8</sup>"

**E1YU 637F1BR** Naturale Rett.

● 61

**E1YT 637F1BP** Lappato Rett.

● 73



15x90 - 5<sup>7/8</sup>"x35<sup>7/16</sup>"

**E1UJ 917F1BR** Naturale Rett.

● 771

**E73D 917F1BP** Lappato Rett.

● 83

# Black Ink Concept



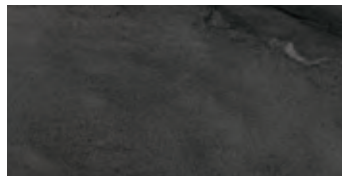
45x90 - 17<sup>11/16</sup>"x35<sup>7/16</sup>"

**E1UU 947F9BR** Naturale Rett.

● 74

**E1UT 947F9BP** Lappato Rett.

● 82



30x60 - 11<sup>13/16</sup>"x23<sup>5/8</sup>"

**E1YY 637F9BR** Naturale Rett.

● 61

**E1YX 637F9BP** Lappato Rett.

● 73



15x90 - 5<sup>7/8</sup>"x35<sup>7/16</sup>"

**E1UL 917F9BR** Naturale Rett.

● 771

**E1V3 917F9BP** Lappato Rett.

● 83

Consigli di posa: per ottenere un risultato estetico ottimale, miscelare il materiale di scatole differenti. - Laying suggestions: to obtain excellent aesthetic results, it is recommended to mix the materials contained in different boxes. - Conseils de pose: pour obtenir d'excellents résultats du point de vue esthétique, mélangez les matériaux contenus dans des boîtes différentes. - Empfehlung für die Verlegung: um ein optimales ästhetisches Ergebnis zu erzielen, das Material der verschiedenen Schachteln mischen. - Consejos para la colocación: para obtener un resultado estético óptimo, mezclar el material de cajas diferentes. - Советы по укладке: Для достижения оптимального эстетического результата, рекомендуется смешивать материал из разных коробок.

Si consiglia la posa con fuga 2 mm. - Laying with a 2 mm-joint is recommended. - Pose recommandée avec joints de 2 mm.

Es wird eine Fugenbreite von 2 mm empfohlen. - Se recomienda la colocación con juntas de 2 mm. - Рекомендуется укладка с швом 2 мм.



# DECORI

DECORS - DECORS - DEKORE - DECORADOS - ДЕКОРЫ

142

## MURETTO\* BASIC



28x28 - 11 1/6" x 11 1/6"

**E1VS M307F8R**  
Bright Grey Nat.

● 104



28x28 - 11 1/6" x 11 1/6"

**E1VQ M307F0R**  
Sugar White Nat.

● 104



28x28 - 11 1/6" x 11 1/6"

**E1VR M307F1R**  
Tea Sand Nat.

● 104



28x28 - 11 1/6" x 11 1/6"

**E1VT M307F9R**  
Black Ink Nat.

● 104

## MOSAICO MIX NAT.-LAPP.\* BASIC

Tessera - Chip 2,8x2,8 - 1 1/8" x 1 1/8"



30x30 - 11 13/16" x 11 13/16"

**E1VH I307F8R**  
Bright Grey

● 98



30x30 - 11 13/16" x 11 13/16"

**E1VF I307F0R**  
Sugar White

● 98



30x30 - 11 13/16" x 11 13/16"

**E1VG I307F1R**  
Tea Sand

● 98



30x30 - 11 13/16" x 11 13/16"

**E1VJ I307F9R**  
Black Ink

● 98

\* Su rete in fibra - On fibre mesh backing - Sur filet en fibre de verre - Auf Glasfasernetz - Sobre malla de fibra - На волоконной сетке



**E1UK 917F8BR**

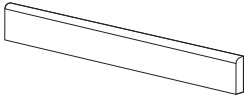
Bright Grey Concept Nat. Rett.  
15x90 - 5 7/8" x 35 7/16"

**E1UR 947F8BP**

Bright Grey Concept Lapp. Rett.  
45x90 - 17 11/16" x 35 7/16"

## PEZZI SPECIALI

TRIMS - PIECES SPECIALES - FORMTEILE - PIEZAS ESPECIALES - СПЕЦИАЛЬНЫЕ ИЗДЕЛИЯ



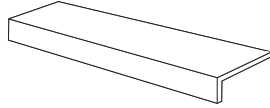
BATTISCOPA - SKIRTING

7,5x60 - 2<sup>15/16</sup>"x23<sup>5/8</sup>"

Pcs. Box 15 - ML x Box 9

Concept

- E12C 877F8BR** Bright Grey Nat. Rett. ● 11
- E127 877F0BR** Sugar White Nat. Rett. ● 11
- E129 877F1BR** Tea Sand Nat. Rett. ● 11
- E12E 877F9BR** Black Ink Nat. Rett. ● 11
  
- E12A 877F8BP** Bright Grey Lapp. Rett. ● 15
- E126 877F0BP** Sugar White Lapp. Rett. ● 15
- E128 877F1BP** Tea Sand Lapp. Rett. ● 15
- E12D 877F9BP** Black Ink Lapp. Rett. ● 15



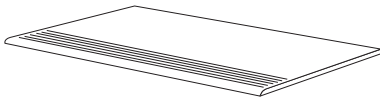
ELEMENTO A "L" - L SHAPED PIECE

15x60x5 - 5<sup>7/8</sup>"x23<sup>5/8</sup>"x1<sup>15/16</sup>"

Pcs. Box 4 - ML x Box 2,40

Concept

- E86J 997F8BR** Bright Grey Nat. Rett. ● 43
- E12F 997F0BR** Sugar White Nat. Rett. ● 43
- E12G 997F1BR** Tea Sand Nat. Rett. ● 43
- E12H 997F9BR** Black Ink Nat. Rett. ● 43



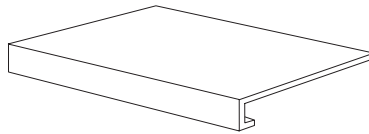
GRADINO - STAIR TREAD

30x60 - 11<sup>13/16</sup>"x23<sup>5/8</sup>"

Pcs. Box 6 - ML x Box 3,60

Concept

- E86Q 63F8BRG** Bright Grey Nat. Rett. ● 51
- E86L 63F0BRG** Sugar White Nat. Rett. ● 51
- E86N 63F1BRG** Tea Sand Nat. Rett. ● 51
- E86S 63F9BRG** Black Ink Nat. Rett. ● 51
  
- E86P 63F8BPG** Bright Grey Lapp. Rett. ● 56
- E86K 63F0BPG** Sugar White Lapp. Rett. ● 56
- E86M 63F1BPG** Tea Sand Lapp. Rett. ● 56
- E86R 63F9BPG** Black Ink Lapp. Rett. ● 56



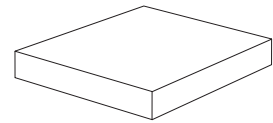
GRADONE - STEP

30x60x3,2x3,2 - 11<sup>13/16</sup>"x23<sup>5/8</sup>"x1<sup>1/4</sup>"x1<sup>1/4</sup>"

Pcs. Box 4 - ML x Box 2,40

Concept

- E12L 71F8BRG** Bright Grey Nat. Rett. ● 79
- E12J 71F0BRG** Sugar White Nat. Rett. ● 79
- E12K 71F1BRG** Tea Sand Nat. Rett. ● 79
- E86X 71F9BRG** Black Ink Nat. Rett. ● 79
  
- E86V 71F8BPG** Bright Grey Lapp. Rett. ● 81
- E86T 71F0BPG** Sugar White Lapp. Rett. ● 81
- E86U 71F1BPG** Tea Sand Lapp. Rett. ● 81
- E86W 71F9BPG** Black Ink Lapp. Rett. ● 81



ANGOLARE - CORNER TILE

30x30x3,2x3,2 - 11<sup>13/16</sup>"x11<sup>13/16</sup>"x1<sup>1/4</sup>"x1<sup>1/4</sup>"

Pcs. Box 2 - ML x Box 0,60

Concept

- E867 72F8BRA** Bright Grey Nat. Rett. ● 83
- E863 72F0BRA** Sugar White Nat. Rett. ● 83
- E865 72F1BRA** Tea Sand Nat. Rett. ● 83
- E869 72F9BRA** Black Ink Nat. Rett. ● 83
  
- E866 72F8BPA** Bright Grey Lapp. Rett. ● 85
- E862 72F0BPA** Sugar White Lapp. Rett. ● 85
- E864 72F1BPA** Tea Sand Lapp. Rett. ● 85
- E868 72F9BPA** Black Ink Lapp. Rett. ● 85

## IMBALLI E PESI

PACKING AND WEIGHT - EMBALLAGES ET POIDS - VERPACKUNG UND GEWICHT - EMBALAJES Y PESOS - УПАКОВКА И ВЕС

Formato Size Format Format Тamaño Формат cm	Spessore Thickness Epaisseur Stärke Espesor Толщина mm	Pz. x Mq. Pieces x Sqm Pcs / M <sup>2</sup> Stk. x Qm Pzs x Mc. шт x Кв.М.	Pz. x Scat. Pieces x Box Pcs / Bte Stk. x Krt. Pzs x Caja шт x Кор.	Mq. x Scat. Sqm x Box M <sup>2</sup> / Bte Qm x Krt. Mc. x Caja Кв.М. x Кор.	Peso x Scat. Weight x Box Poids / Bte Gewicht x Krt. Peso x Caja Вес x Кор. Kg	Scat. x Pal. Boxes x Pal. Bte / Pal. Krt. x Pal. Cajas x Pal. Кор. x Подд.	Mq. x Pal. Sqm x Pal. M <sup>2</sup> / Pal. Qm x Pal. Mc. x Pal. Кв.М x Подд.	Peso x Pal. Weight x Pal. Poids / Pal. Gewicht x Pal. Peso x Pal. Вес x Подд. Kg
45x90 Naturale - Lappato	10	2,47	3	1,215	27,72	32	38,88	887
15x90 Naturale - Lappato	10	7,41	7	0,945	21,44	45	42,53	965
30x60 Naturale - Lappato	10	5,56	6	1,080	24,23	40	43,20	969
30x30 Mosaico	10	11,11	5	0,450	10,90	60	27,00	654
28x28 Muretto	10	12,76	5	0,390	9,60	60	23,40	576