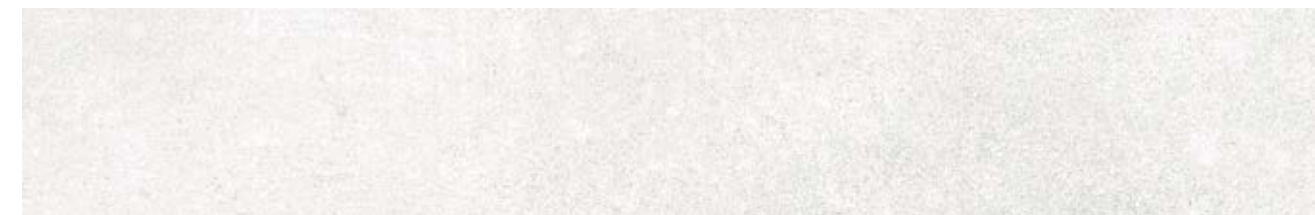


CEMENT

30 x 60 / 60 x 60 / 22,5 x 90 / 45 x 90 cm.
12 x 24" / 24 x 24" / 9 x 35" / 18 x 35"



Cement Grey



Cement White



Cement Rope



Cement Grey



Cement Beige



Cement Smoke



Cement Graphite

CEMENT

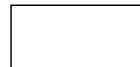
30 x 60 / 60 x 60 / 22,5 x 90 / 45 x 90 cm.
12 x 24" / 24 x 24" / 9 x 35" / 18 x 35"

CEMENT

30 x 60 / 60 x 60 / 22,5 x 90 / 45 x 90 cm.
12 x 24" / 24 x 24" / 9 x 35" / 18 x 35"

FORMATOS
FORMATS

30 x 60 Natural



Cement White 30 x 60 cm. **71Y** A40 (M²)
Cement Rope 30 x 60 cm. **71X** A40 (M²)
Cement Grey 30 x 60 cm. **71Z** A40 (M²)
Cement Beige 30 x 60 cm. **71U** A40 (M²)
Cement Smoke 30 x 60 cm. **71V** A40 (M²)
Cement Graphite 30 x 60 cm. **71W** A42 (M²)

30 x 60 Natural Rectificad



Cement White 30 x 60 cm. Rec **72U** A47 (M²)
Cement Rope 30 x 60 cm. Rec **72T** A47 (M²)
Cement Grey 30 x 60 cm. Rec **72V** A47 (M²)
Cement Beige 30 x 60 cm. Rec **72Q** A47 (M²)
Cement Smoke 30 x 60 cm. Rec **72R** A47 (M²)
Cement Graphite 30 x 60 cm. Rec **72S** A48 (M²)

30 x 60 Semipulido Rectificad



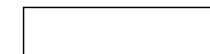
Cement White SP 30 x 60 cm. Rec **73A** A48 (M²)
Cement Rope SP 30 x 60 cm. Rec **72Z** A48 (M²)
Cement Grey SP 30 x 60 cm. Rec **73B** A48 (M²)
Cement Beige SP 30 x 60 cm. Rec **72W** A48 (M²)
Cement Smoke SP 30 x 60 cm. Rec **72X** A48 (M²)
Cement Graphite SP 30 x 60 cm. Rec **72Y** A49 (M²)

30 x 60 Natural Exterior



Cement White 30 x 60 cm. Ext **7TJ** A40 (M²)
Cement Rope 30 x 60 cm. Ext **7TH** A40 (M²)
Cement Grey 30 x 60 cm. Ext **7TG** A40 (M²)
Cement Beige 30 x 60 cm. Ext **7TE** A40 (M²)
Cement Smoke 30 x 60 cm. Ext **7TI** A40 (M²)
Cement Graphite 30 x 60 cm. Ext **7TF** A42 (M²)

22,5 x 90 Natural Rectificad



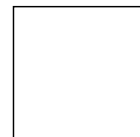
Cement White 22,5 x 90 cm. Rec **74W** A57 (M²)
Cement Rope 22,5 x 90 cm. Rec **74V** A57 (M²)
Cement Grey 22,5 x 90 cm. Rec **74X** A57 (M²)
Cement Beige 22,5 x 90 cm. Rec **74S** A57 (M²)
Cement Smoke 22,5 x 90 cm. Rec **74T** A57 (M²)
Cement Graphite 22,5 x 90 cm. Rec **74U** A58 (M²)

22,5 x 90 Semipulido Rectificad



Cement White SP 22,5 x 90 cm. Rec **74M** A58 (M²)
Cement Rope SP 22,5 x 90 cm. Rec **74L** A58 (M²)
Cement Grey SP 22,5 x 90 cm. Rec **74N** A58 (M²)
Cement Beige SP 22,5 x 90 cm. Rec **74I** A58 (M²)
Cement Smoke SP 22,5 x 90 cm. Rec **74J** A58 (M²)
Cement Graphite SP 22,5 x 90 cm. Rec **74K** A62 (M²)

60 x 60 Natural



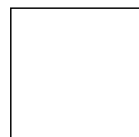
Cement White 60 x 60 cm. **72E** A40 (M²)
Cement Rope 60 x 60 cm. **72D** A40 (M²)
Cement Grey 60 x 60 cm. **72F** A40 (M²)
Cement Beige 60 x 60 cm. **72A** A40 (M²)
Cement Smoke 60 x 60 cm. **72B** A40 (M²)
Cement Graphite 60 x 60 cm. **72C** A42 (M²)

60 x 60 Natural Rectificad



Cement White 60 x 60 cm. Rec **73Q** A47 (M²)
Cement Rope 60 x 60 cm. Rec **73P** A47 (M²)
Cement Grey 60 x 60 cm. Rec **73R** A47 (M²)
Cement Beige 60 x 60 cm. Rec **73M** A47 (M²)
Cement Smoke 60 x 60 cm. Rec **73N** A47 (M²)
Cement Graphite 60 x 60 cm. Rec **73O** A48 (M²)

60 x 60 Semipulido Rectificad



Cement White SP 60 x 60 cm. Rec **73G** A48 (M²)
Cement Rope SP 60 x 60 cm. Rec **73F** A48 (M²)
Cement Grey SP 60 x 60 cm. Rec **73H** A48 (M²)
Cement Beige SP 60 x 60 cm. Rec **73C** A48 (M²)
Cement Smoke SP 60 x 60 cm. Rec **73D** A48 (M²)
Cement Graphite SP 60 x 60 cm. Rec **73E** A49 (M²)

30 x 60 Natural Exterior Rectificad



Cement White 30 x 60 cm. Ext Rec **7TO** A47 (M²)
Cement Rope 30 x 60 cm. Ext Rec **7TN** A47 (M²)
Cement Grey 30 x 60 cm. Ext Rec **7TP** A47 (M²)
Cement Beige 30 x 60 cm. Ext Rec **7TK** A47 (M²)
Cement Smoke 30 x 60 cm. Ext Rec **7TL** A47 (M²)
Cement Graphite 30 x 60 cm. Ext Rec **7TM** A48 (M²)

45 x 90 Natural Rectificad



Cement White 45 x 90 cm. Rec **73W** A49 (M²)
Cement Rope 45 x 90 cm. Rec **73V** A49 (M²)
Cement Grey 45 x 90 cm. Rec **73X** A49 (M²)
Cement Beige 45 x 90 cm. Rec **73Y** A49 (M²)
Cement Smoke 45 x 90 cm. Rec **73T** A49 (M²)
Cement Graphite 45 x 90 cm. Rec **73U** A50 (M²)

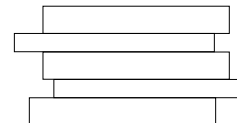
45 x 90 Semipulido Rectificad



Cement White SP 45 x 90 cm. Rec **74C** A50 (M²)
Cement Rope SP 45 x 90 cm. Rec **74B** A50 (M²)
Cement Grey SP 45 x 90 cm. Rec **74D** A50 (M²)
Cement Beige SP 45 x 90 cm. Rec **73Y** A50 (M²)
Cement Smoke SP 45 x 90 cm. Rec **73Z** A50 (M²)
Cement Graphite SP 45 x 90 cm. Rec **74A** A57 (M²)

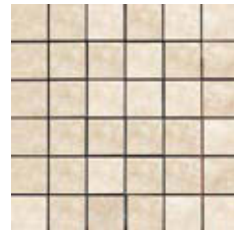
PIEZAS COMPLEMENTARIAS
SPECIAL PIECES

15 x 30 Mureto



Cement White Mureto 15 x 30 cm. **7Q0** A98 (M²)
Cement Rope Mureto 15 x 30 cm. **7PY** A98 (M²)
Cement Grey Mureto 15 x 30 cm. **7PX** A98 (M²)
Cement Beige Mureto 15 x 30 cm. **7PQ** A98 (M²)
Cement Smoke Mureto 15 x 30 cm. **7PZ** A98 (M²)
Cement Graphite Mureto 15 x 30 cm. **7PW** A98 (M²)

30 x 30 Mosaico



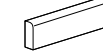
Cement Mosaico-A (5 x 5) 30 x 30 cm. **8ZF** A96 (M²)

30 x 30 Mosaico



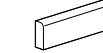
Cement Mosaico-B (5 x 5) 30 x 30 cm. **8ZG** A96 (M²)

8 x 45 Rodapié Rectificad

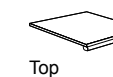


Cement White Rod 8 x 45 cm. Rec **7MJ** A19 (P)
Cement Rope Rod 8 x 45 cm. Rec **7MH** A19 (P)
Cement Grey Rod 8 x 45 cm. Rec **7MG** A19 (P)
Cement Beige Rod 8 x 45 cm. Rec **7ME** A19 (P)
Cement Smoke Rod 8 x 45 cm. Rec **7MI** A19 (P)
Cement Graphite Rod 8 x 45 cm. Rec **7MF** A19 (P)

8 x 45 Rodapié Semipulido Rectificad



Cement White SP Rod 8 x 45 cm. Rec **7MP** A19 (P)
Cement Rope SP Rod 8 x 45 cm. Rec **7MN** A19 (P)
Cement Grey SP Rod 8 x 45 cm. Rec **7MM** A19 (P)
Cement Beige SP Rod 8 x 45 cm. Rec **7MK** A19 (P)
Cement Smoke SP Rod 8 x 45 cm. Rec **7MO** A19 (P)
Cement Graphite SP Rod 8 x 45 cm. Rec **7ML** A19 (P)



Top



Peldaño

Consultar a fábrica disponibilidad de piezas
Consult factory for parts availability

9,6 x 60 Rodapié



Cement White Rod 9,6 x 60 cm. **7A8** A19 (P)
Cement Rope Rod 9,6 x 60 cm. **7A6** A19 (P)
Cement Grey Rod 9,6 x 60 cm. **7A5** A19 (P)
Cement Beige Rod 9,6 x 60 cm. **7A3** A19 (P)
Cement Smoke Rod 9,6 x 60 cm. **7A7** A19 (P)
Cement Graphite Rod 9,6 x 60 cm. **7A4** A19 (P)

9,6 x 60 Rodapié Rectificad



Cement White Rod 9,6 x 60 cm. Rec **7AE** A20 (P)
Cement Rope Rod 9,6 x 60 cm. Rec **7AC** A20 (P)
Cement Grey Rod 9,6 x 60 cm. Rec **7AB** A20 (P)
Cement Beige Rod 9,6 x 60 cm. Rec **7A9** A20 (P)
Cement Smoke Rod 9,6 x 60 cm. Rec **7AD** A20 (P)
Cement Graphite Rod 9,6 x 60 cm. Rec **7AA** A20 (P)

9,6 x 60 Rodapié Semipulido Rectificad



Cement White SP Rod SP 9,6 x 60 cm. Rec **7AK** A20 (P)
Cement Rope SP Rod SP 9,6 x 60 cm. Rec **7AI** A20 (P)
Cement Grey SP Rod SP 9,6 x 60 cm. Rec **7AH** A20 (P)
Cement Beige SP Rod SP 9,6 x 60 cm. Rec **7AF** A20 (P)
Cement Smoke SP Rod SP 9,6 x 60 cm. Rec **7AJ** A20 (P)
Cement Graphite SP Rod SP 9,6 x 60 cm. Rec **7AG** A20 (P)

POLIVALENTE WALL AND FLOOR TILE		PORCELÁNICO PORCELAIN TILE		COLOR EN MASA COLOURED BISQUIT		ESPESOR 11 THICKNESS		ESPESOR 10,5 THICKNESS		ESPESOR 9,5 THICKNESS		RECTIFICADO RECTIFIED		JUNTA JOINT		SOMBRADO SHADED		ALTERNATIVA DE DISEÑO ALTERNATIVE DESIGN		VIVIENDAS HOME		COMERCIOS STORES		RESISTENTE HYGIENIC		EXTERIOR EXTERIOR		INTERIOR INTERIOR		ANTIHELADO FROST PROOF		ANTI HÚMEDOS BATHROOMS		A DOMÉSTICO ANTISLIP		EXT. PÚBLICOS URBAN ANTISLIP		UNE ENY 12633 NON-SLIP VALUE	
------------------------------------	--	-------------------------------	--	-----------------------------------	--	-------------------------	--	---------------------------	--	--------------------------	--	--------------------------	--	----------------	--	--------------------	--	---	--	-------------------	--	---------------------	--	------------------------	--	----------------------	--	----------------------	--	---------------------------	--	---------------------------	--	-------------------------	--	---------------------------------	--	---------------------------------	--

CTE 1 UNE ENY 12633 NON-SLIP VALUE	R11 DIN 51130 TEST DIN 51130	R9 DIN 51130 TEST DIN 51130
--	------------------------------------	-----------------------------------