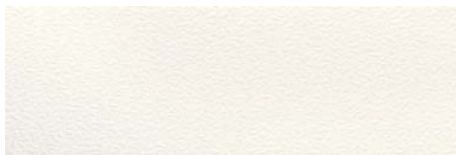




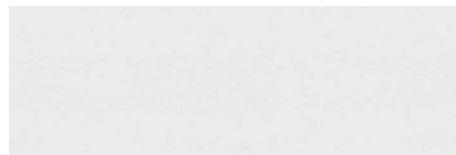
Rev./Wall: Allegra blanco M, Allegra negro M  
Pav./Floor: Combi negro

20 x 60 / 45 x 45 cm.  
8" x 24" / 18" x 18"

# ALLEGRA



Allegra Blanco M 20 x 60 cm. **AC2** R21 (M<sup>2</sup>)



Sun Blanco (Br) 20 x 60 cm. **2ND** R24 (M<sup>2</sup>)



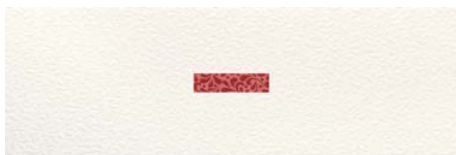
Allegra Blanco Listelo 2,5 x 60 cm. **AFJ** R45 (P)



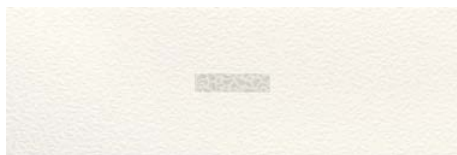
Listelo Círculos Oro 2,5 x 60 cm. **2TM** R64 (P)



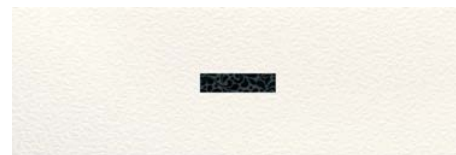
Listelo Círculos Plata 2,5 x 60 cm. **2TN** R70 (P)



Allegra Blanco Decor Burdeos 20 x 60 cm. **AGG** R72 (P)



Allegra Blanco Decor Gris 20 x 60 cm. **AGH** R72 (P)



Allegra Blanco Decor Negro 20 x 60 cm. **AGI** R72 (P)



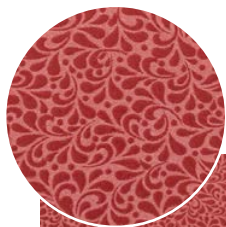
Allegra Burdeos Listelo 2,5 x 60 cm. **AFK** R45 (P)



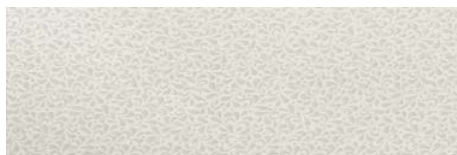
Allegra Gris Listelo 2,5 x 60 cm. **AFL** R45 (P)



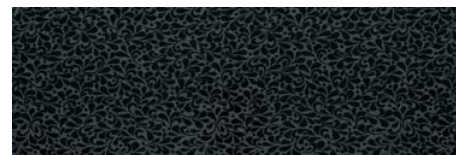
Allegra Negro Listelo 2,5 x 60 cm. **AFM** R45 (P)



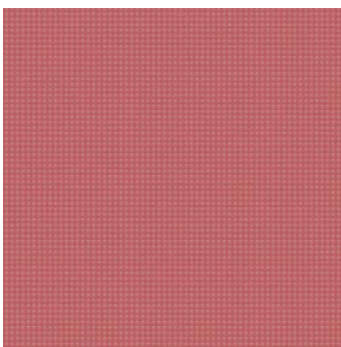
Allegra Burdeos M 20 x 60 cm. **AC4** R24 (M<sup>2</sup>)



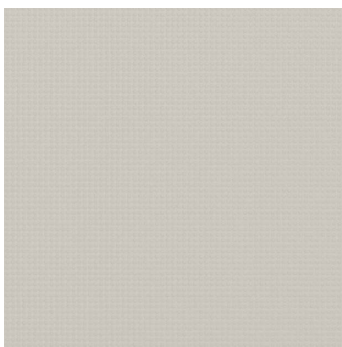
Allegra Gris M 20 x 60 cm. **AC3** R21 (M<sup>2</sup>)



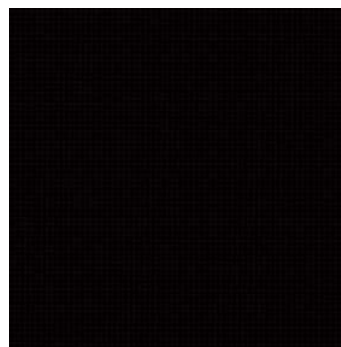
Allegra Negro M 20 x 60 cm. **AC5** R24 (M<sup>2</sup>)



Combi Grana 45 x 45 cm. **60E** R17 (M<sup>2</sup>)



Combi Gris 45 x 45 cm. **60F** R13 (M<sup>2</sup>)



Combi Negro 45 x 45 cm. **6E5** R13 (M<sup>2</sup>)

## PACKING LIST

Formato Sizes	Espesor Thickness	m <sup>2</sup> /caja m <sup>2</sup> /box	Piezas/caja Pieces/box	Piezas/m <sup>2</sup> Pieces/m <sup>2</sup>	Kg/m <sup>2</sup> Kg/m <sup>2</sup>	Kg/Caja Kg/Box	m <sup>2</sup> /Europallet m <sup>2</sup> /Europallet	Cajas/Europallet Boxes/Europallet	Kg/Europallet Kg/Europallet
20X60 cm.	11,2	0,96	8	8,33	18,15	17,42	61,44	64	1140
45X45 cm. Pasta Roja	10	1,42	7	4,93	19,45	27,61	62,48	44	1240

20 x 60 cm.	45 x 45 cm.	20 x 60 cm.	45 x 45 cm.	20 x 60 cm.	45 x 45 cm.	SUAVE SMOOTHLY			20 x 60 cm.		
REVESTIMIENTO WALL TILE	PAVIMENTO FLOOR TILE	PASTA BLANCA WHITE BODY TILE	PASTA ROJA RED BODY TILE	ESPESOR THICKNESS	ESPESOR THICKNESS	JUNTA JOINT	DESTONACIÓN SHADED	NO REPETITIVO ALTERNATIVE DESIGN	BRILLO GLOSS	RESISTENTE HYGIENIC	INTERIOR INTERIOR