

TRALERIGHE

2020

design_Gumdesign

TRALERIGHE è la prima collezione di carte da parati prodotta da antoniolupi e si colloca all'interno dell'omonimo "grande contenitore" ideato da Gumdesign "TRA LE RIGHE" è comprensivo dei già noti lavabi Borghi e Gessati.

La carta da parati è una nuova ulteriore sfida accolta da antoniolupi ed è una collezione che completa perfettamente il progetto bagno nella sua globalità.

Il fil rouge che lega tutte le proposte del concept sono appunto le geometrie e i colori; in Borghi i colori sono caldi e intensi, ma non sono riconducibili a un codice o pantone preciso, sono una sfumatura.

All'opposto nelle altre proposte di questo grande contenitore è il contrasto tra il BIANCO caldo ovattato e il NERO che crea luce e che parla con la sua intensità.

I disegni della collezione di carte da parati TRALERIGHE sono studiati su un algoritmo matematico: rette orizzontali, verticali e oblique si intersecano come se fossero vive ed in continuo movimento dialogando tra loro; in modo tale che il risultato ottico non sia di chiusura in una gabbia grafica prestabilita, bensì di apertura, disegnando lo spazio.

I moduli si accostano liberamente creando infiniti disegni ritmati e liberi.

Lo spazio incorpora il movimento che viene dato dalle righe ed è pronto ad accogliere, come un pentagramma accoglie le note.

Le righe di solo 1 millimetro di spessore hanno la capacità di comunicare razionalità ed ordine eppure il loro accostamento crea emozione.

Per paradosso le linee trasmettono una assenza di confini.

La collezione è composta da 20 disegni disponibili in positivo e negativo.

"Sottili linee tracciate generano una rete - sintetizzano i designer Gabriele Pardi e Laura Fiaschi di Gumdesign - Un filtro alla frenesia del giorno per fermarsi e osservare oltre.

Oltrepassare la superficie per immergersi negli aspetti invisibili del quotidiano".

TRALERIGHE is the first collection of wallpaper produced by antoniolupi and is within the homonymous 'large container' designed by Gumdesign, "Tra le Righe", inclusive of the already well known sinks Borghi and Gessati.

Wallpaper is a new challenge taken on by antoniolupi that completes the bathroom project.

The common thread that binds it all together, the proposals of the concept are precisely the geometries and the colors; in Borghi the colors are warm and intense but do not refer back to a code or precise pantone because they are a shade.

On the other hand, in the other proposals of this "large container" there is a contrast between warm muffled WHITE and BLACK that creates light and speaks about intensity.

The designs of the TRALERIGHE wallpaper collection are studied on a mathematical algorithm: horizontal, vertical and oblique lines intersect as if they were alive and constantly moving, conversing with each other; so that the optical result is not of closure within a pre-established graphical cage, but of openness, designing the space.

The modules approach each other creating infinite rhythmic and free designs.

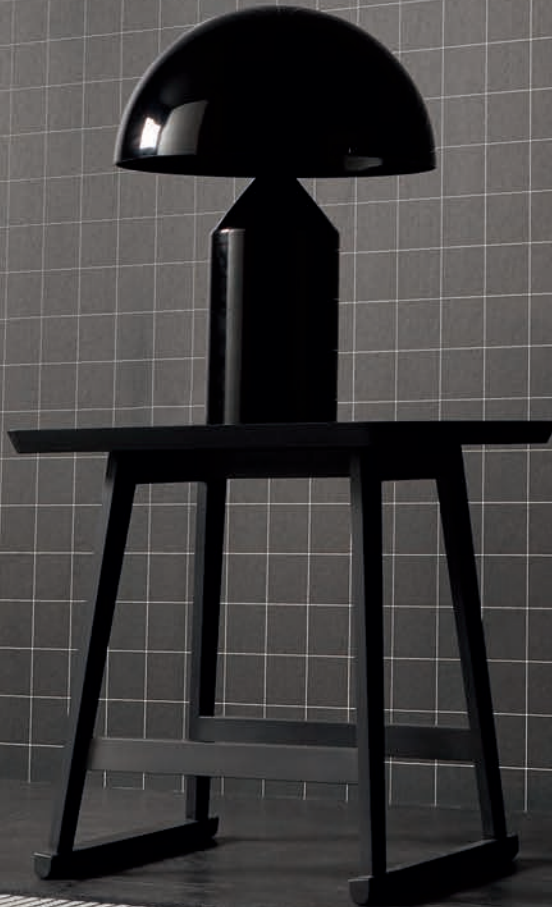
The space incorporates the movement that is given by the lines and is ready to welcome, like a pentagram welcomes the notes.

Lines only 1 millimeter thick communicate rationality and with order, yet their combination creates emotion.

Paradoxically, the lines convey an absence of borders.

The collection consists of 13 designs available in positive and negative.

"Thin traced lines generate a network - the designers Gabriele Pardi and Laura Fiaschi summarize - A filter for a frenzy day to stop and look beyond. Go past the surface to immerse yourself in the invisible aspects of everyday life".



CARTE DA PAFATI
WALLPAPER

ART. Q10N

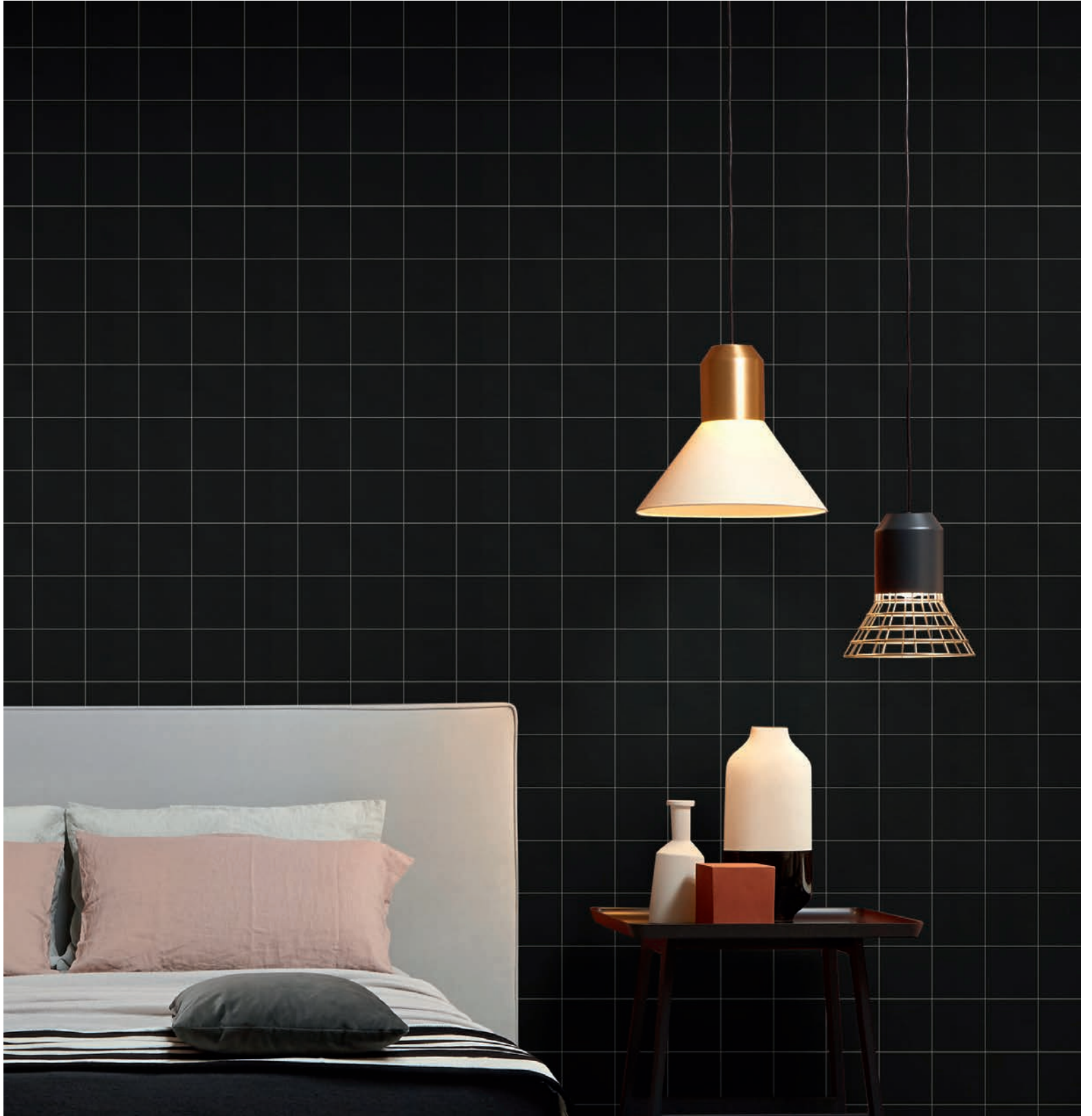




ART. Q10N

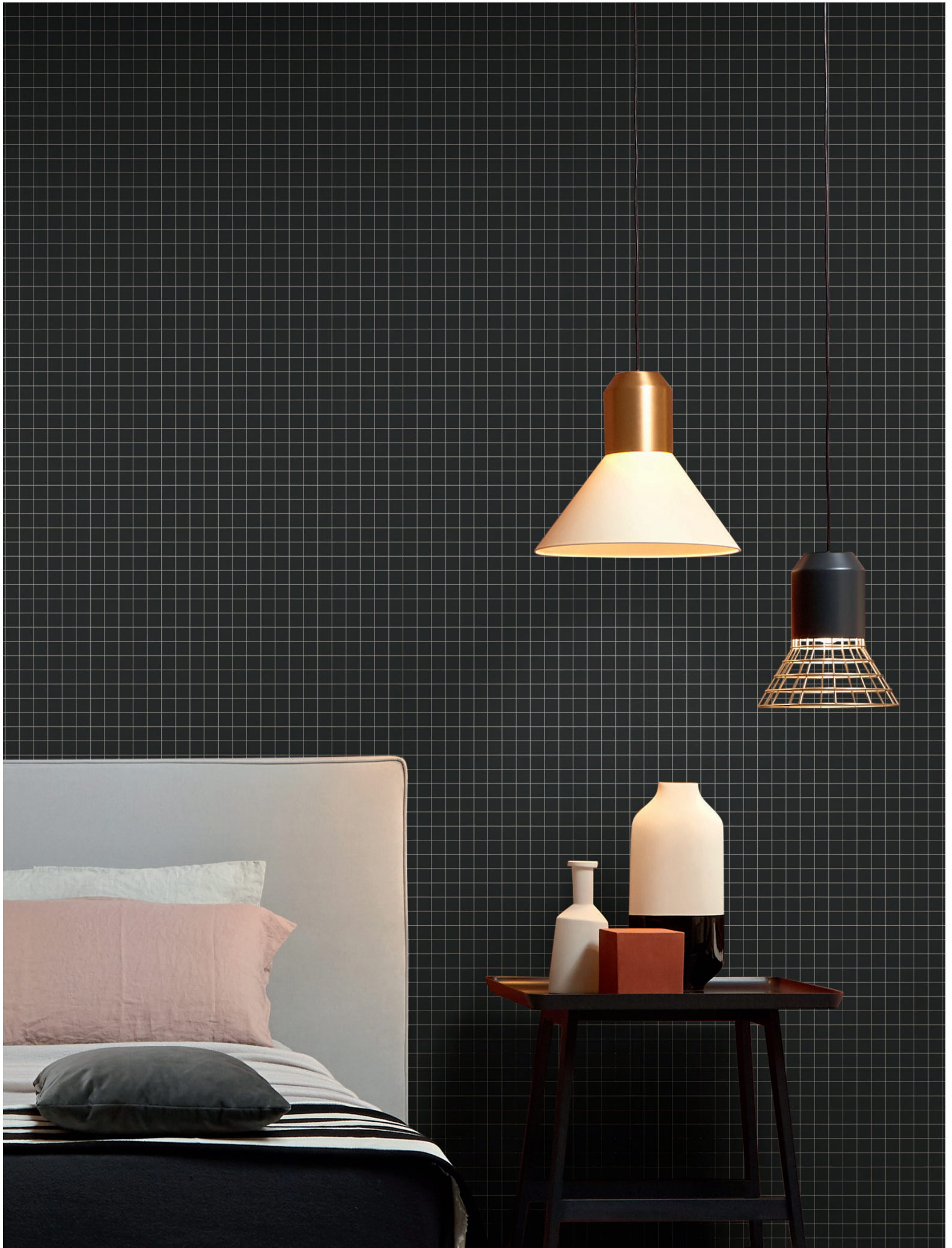






Sopra | *Above* ART. Q10N

Sulla destra | *On the right* ART. Q2N

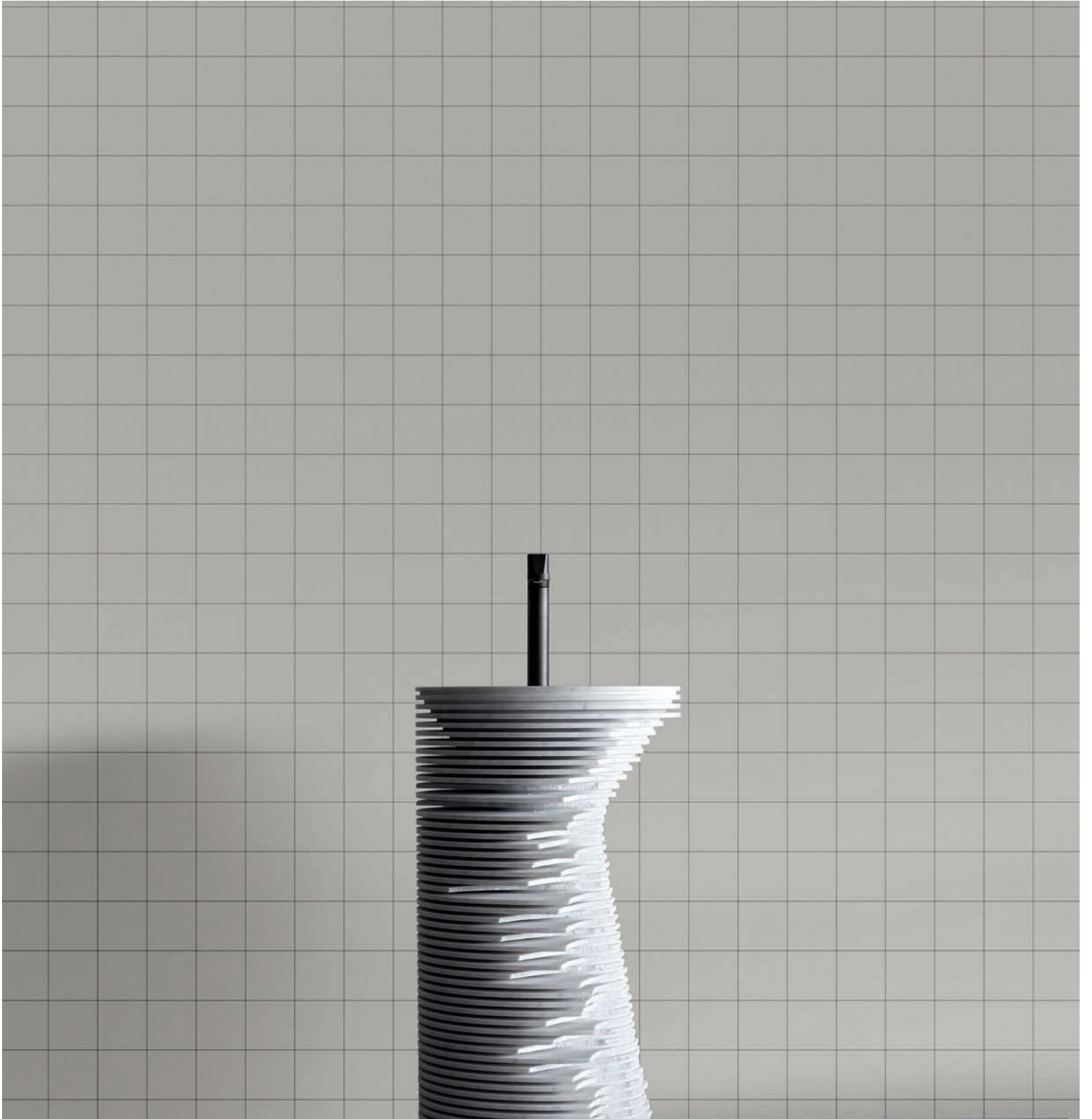




Sopra e sulla destra | *Above and on the right* ART. Q2P + ART. Q2N



CARTE DA PAFATI
WALLPAPER



Sopra e sulla destra | *Above and on the right* ART. Q10P





ART. Q10P



CARTE DA PARATI
WALLPAPER



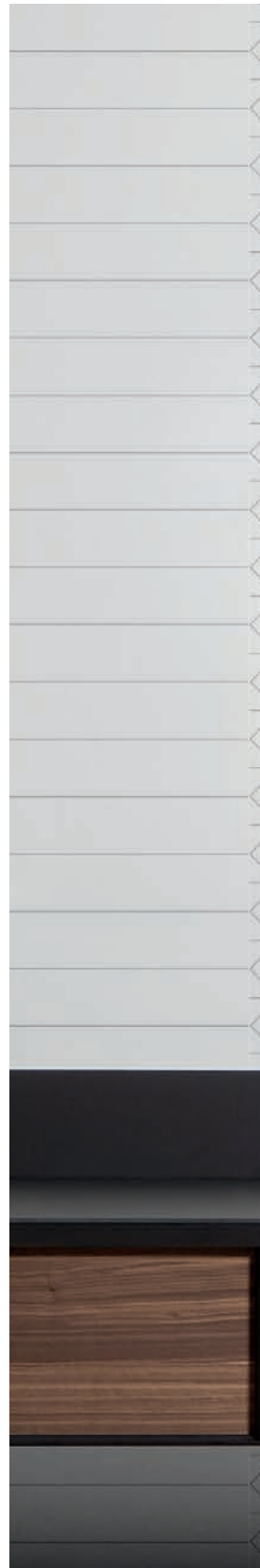
ART. D2N + ART. DD2N



CARTE DA PARATI
WALLPAPER



ART. A2P



ART. O10P





ART. A10P

CARTE DA PARATI
WALLPAPER

ART. Q10N





TRALERIGHE

A_TRATTO

Carta art. A_TRATTO: supporto in TNT con finitura Vinilica, adatto per qualsiasi ambiente della casa.
Le dimensioni del rotolo di carta sono di L (larghezza) 60 cm e H (lunghezza) minimo 10 ml.
Il minimo d'ordine per questo articolo è 6 m². Prezzo al m², comprensivo di prodotto per la posa.

*Carta art. A_TRATTO: support in TNT with Vinilic finish, suitable for any space in the house.
The dimensions of the roll are L (width) 60 cm and H (length) minimum 10 ml.
The minimum order for this article is 6 sqm. Price per sqm. Including the installation product.*

art. _____

A_TRATTO _____

A_TRAMA

Carta art. A_TRAMA: supporto in Fibra di Vetro, idropellente adatto per le zone a diretto contatto con l'acqua.
Le dimensioni del rotolo di carta sono di L (larghezza) 90 cm e H (lunghezza) minimo 10 ml.
Il minimo d'ordine per questo articolo è di 9 m². Prezzo al m², comprensivo di prodotto per la posa.

*Carta art. A_TRAMA: support in Fiber Glass, water repellent suitable for areas in direct contact with water.
The dimensions of the roll are L (width) 90 cm and H (length) minimum 10 ml.
The minimum order for this article is 9 sqm. Price per sqm, including the installation product.*

art. _____

A_TRAMA _____

Resina protettiva bicomponente per art. A_TRAMA con supporto in Fibra di Vetro.
Confezione da 1,2 kg per 12 m².

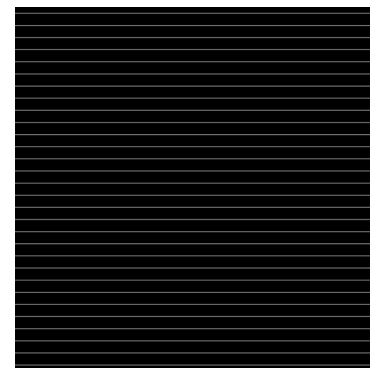
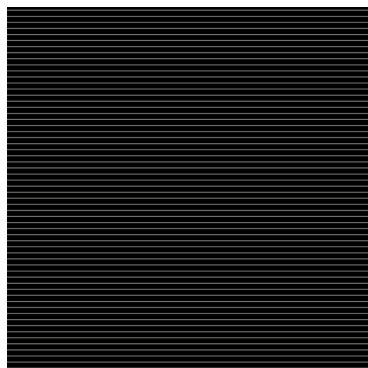
*For art. A_TRAMA with fiber glass support order the bicomponent protective resin.
Package of 1,2 kg for 12 sqm.*

art. _____

RESINA _____

CAMPIONARIO

SAMPLES

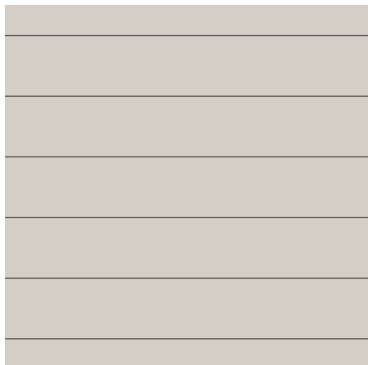


art. _____
O1P _____

art. _____
O1N _____

art. _____
O2P _____

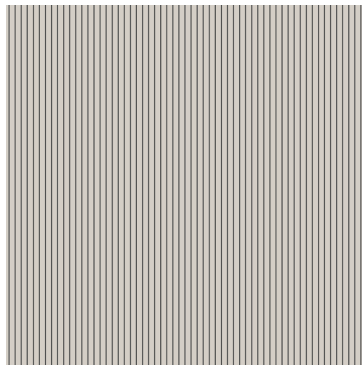
art. _____
O2N _____



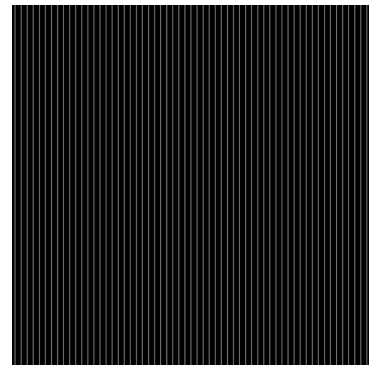
art.
O10P



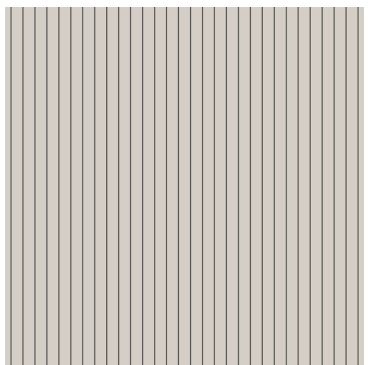
art.
D1N



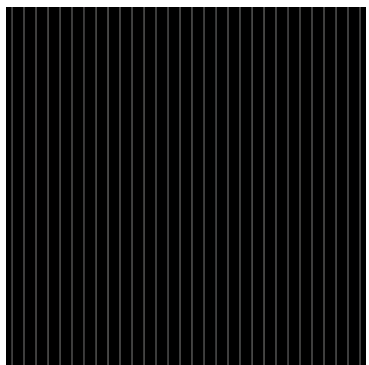
art.
V1P



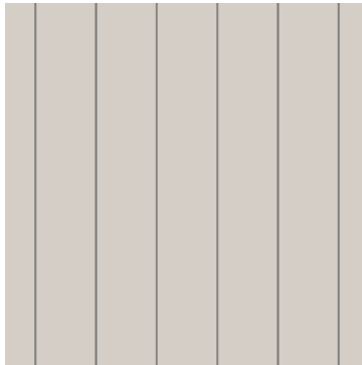
art.
V1N



art.
V2P



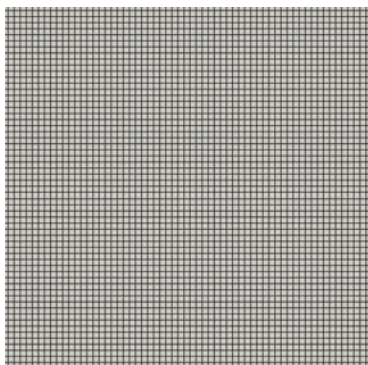
art.
V2N



art.
V10P



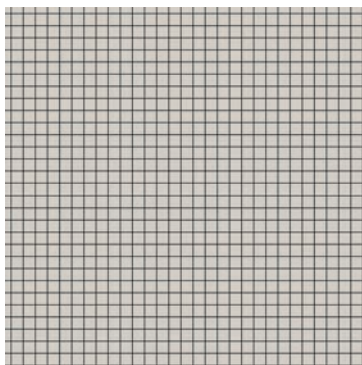
art.
V10N



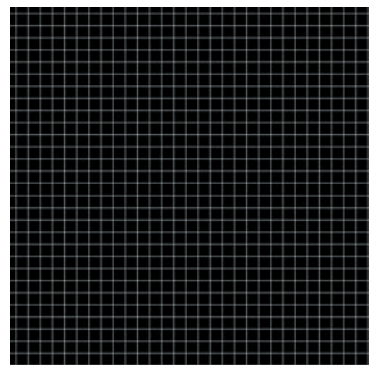
art.
Q1P



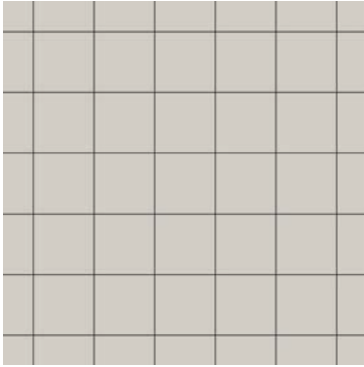
art.
Q2N



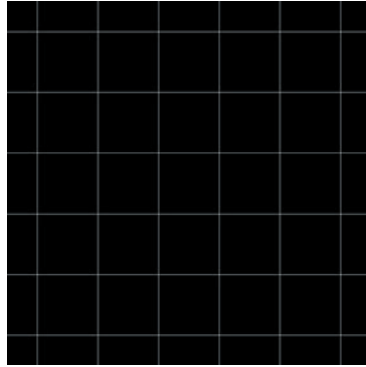
art.
Q2P



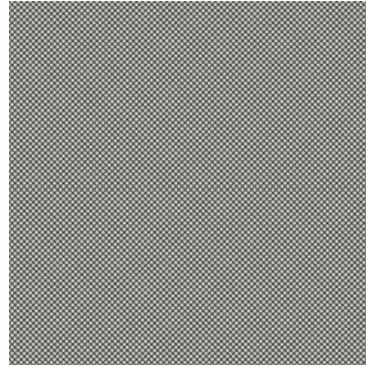
art.
Q2N



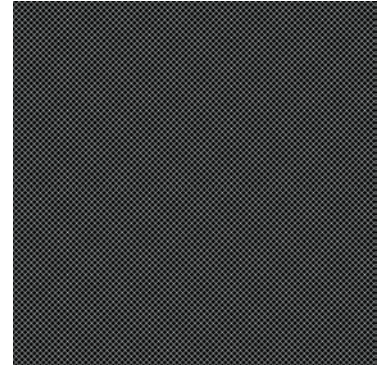
art.
Q10P



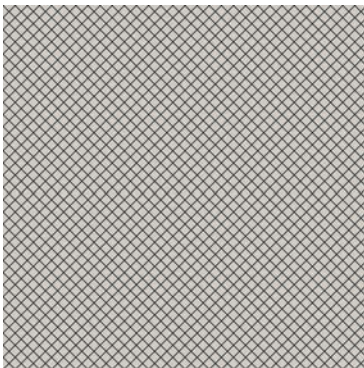
art.
Q10N



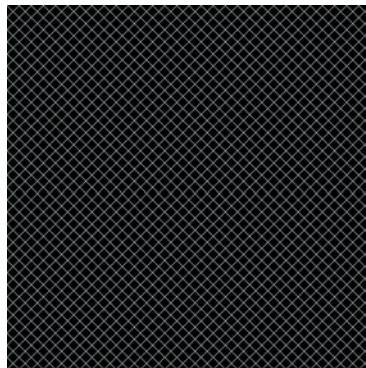
art.
C1P



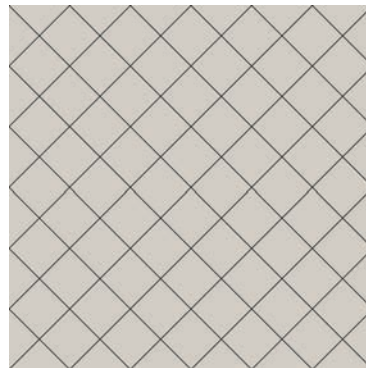
art.
C1N



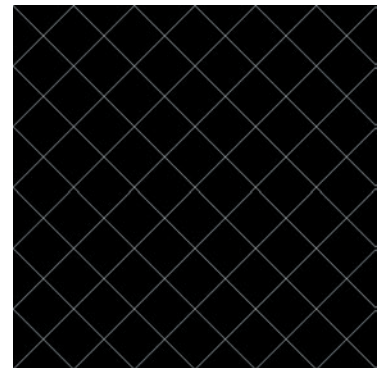
art.
C2P



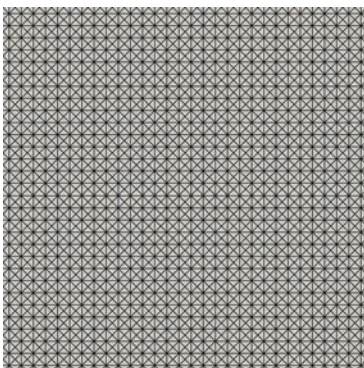
art.
C2N



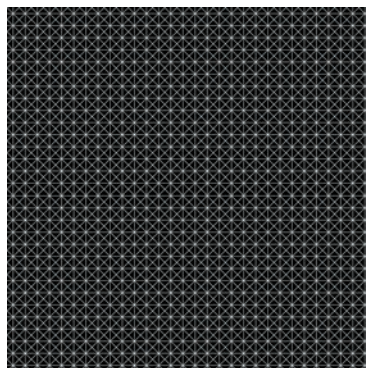
art.
C10P



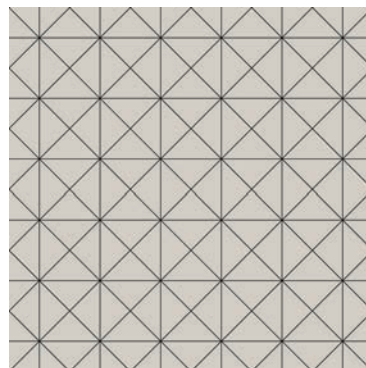
art.
C10N



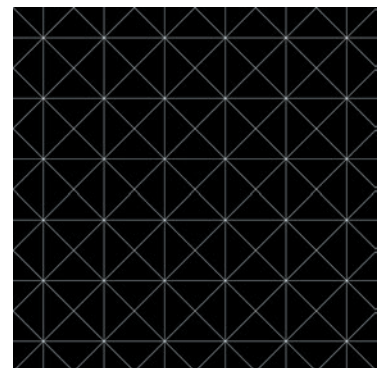
art.
A2P



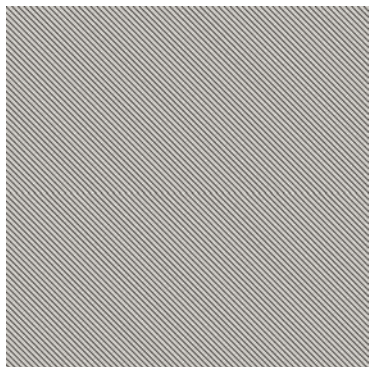
art.
A2N



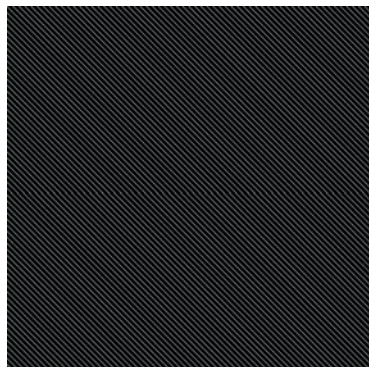
art.
A10P



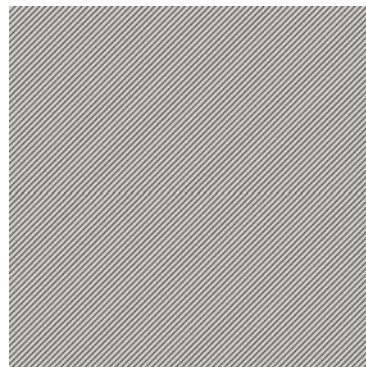
art.
A10N



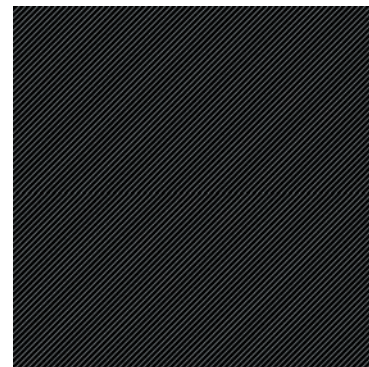
art.
D1P



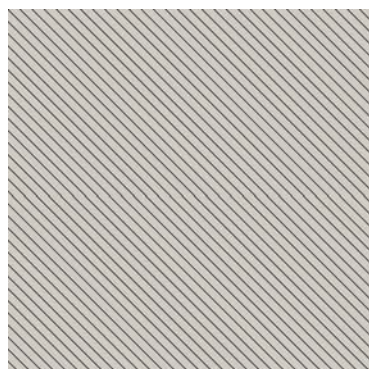
art.
D1N



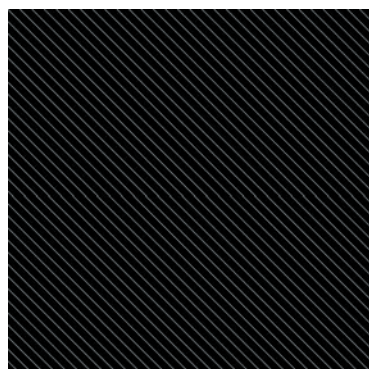
art.
DD1P



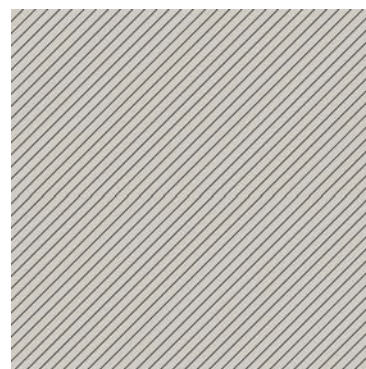
art.
DD1N



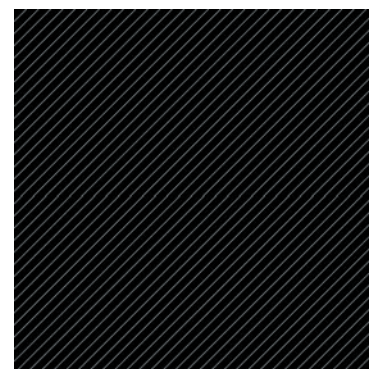
art.
D2P



art.
D2N



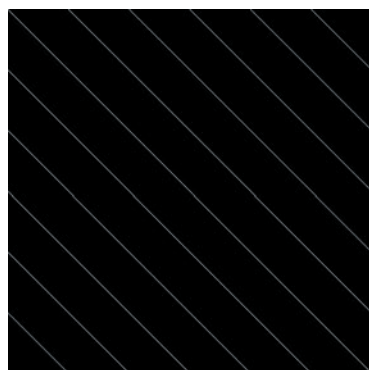
art.
DD2P



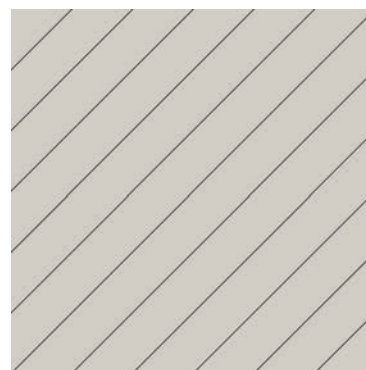
art.
DD2N



art.
D10P



art.
D10N



art.
DD10P



art.
DD10N