

TRATTI

design Inga Sempé

colours

sizes

technical features

packing

MU
TIN
A[®]

TRATTI

design Inga Sempé 2014

production industrial

material gres porcellanato smaltato con stampa digitale
homogeneous porcelain stoneware with digital printing glazing

thickness 8mm

*misure nominali - nominal sizes

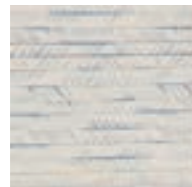
bianco



mix chiaro



eipi



acqua



croix



feutre



triple



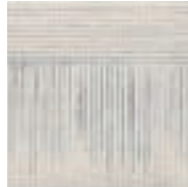
ligne



croisée



tiers



beige



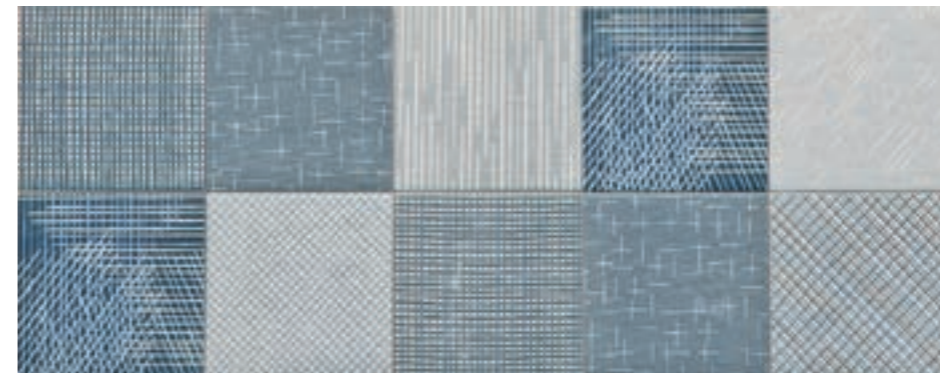
mix grigio



grigio



mix scuro



8 pattern individuali e 3 colori di base in formato 10x10 cm da abbinare liberamente fra di loro.
8 single patterns and 3 different field tiles in sizes 10x10 cm (4"x4") easy to match each other.

3 mix composti da pattern diversi.
3 mix composed by different patterns.

TRATTI ZOOM

pattern + fondi



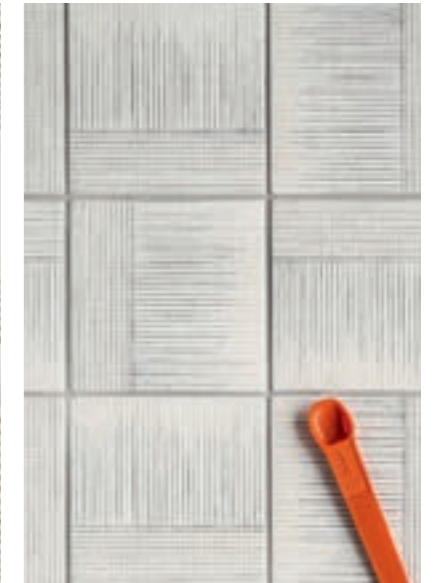
/ croix + beige



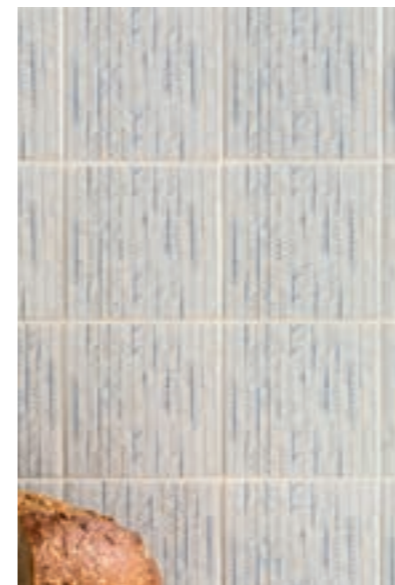
/ grigio + bianco + ligne



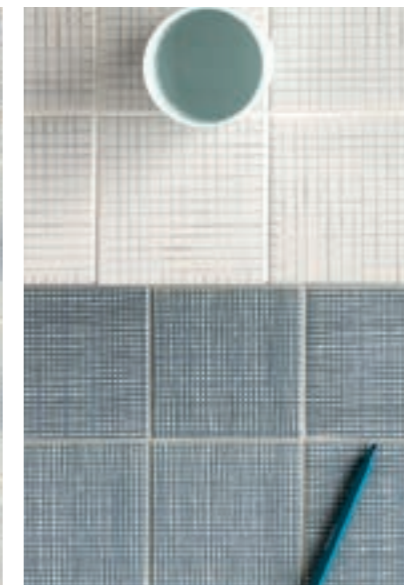
/ triple + bianco



/ tiers



/ epi



/ aqua + feutre



/ croisée

TRATTI ZOOM

mix



/ mix scuro



/ mix chiaro



/ mix grigio

TRATTI / technical features

norma standard	caratteristiche features	valore prescritto value required	tratti
ISO 10545/3	assorbimento d'acqua water absorption	<0,5%	0,12%
ASTM C373		<0,5%	0,12%
ISO 10545/9	resistenza agli sbalzi termici resistance to thermal shock	nessuna alterazione visibile no visible alteration	resiste resistant
ASTM C484		no samples must show visible defects	unaffected
ISO 10545/12	resistenza al gelo frost resistance	nessuna alterazione visibile no visible alteration	resiste resistant
ASTM C1026		unaffected	unaffected
ISO 10545/13	resistenza agli attacchi chimici resistance to chemical attacks	nessuna alterazione visibile no visible alteration	resiste resistant
ASTM C650			unaffected
ISO 10545/4	sforzo di rottura (N) breaking strength (N)	Sp \geq 7,5 min 1300	1795
DIN 51130 - 04		valori medi 6° ÷ 10° 10° ÷ 19° 19° ÷ 27° 27° ÷ 35° > 35°	R9 R10 R11 R12 R13
ASTM C1028		> 0,60	dry 0,71 wet 0,72
ISO 10545/7	resistenza all'abrasione superficiale resistance to superficial abrasion		PEI IV
ISO 10545/11	resistenza al cavillo crazing resistance	nessuna alterazione visibile no visible alteration	resiste resistant
ISO 10545/14	resistenza alle macchie stains resistance	classe 3 min	classe 5

TRATTI / packing

formato sizes	pz-mq pcs-sqm	pz-scat. pcs-box	mq-scat. sqm-box	scat.-pal. box-pal.	kg-scat. kg-box	kg-pal. kg-pal.	mq-pal sqms-pal
10-10	100	88	0,88	72	15,40	1109,00	63,36
pattern 10-10	100	88	0,88	72	15,40	1109,00	63,36
mix chiaro 10-10	100	88	0,88	72	15,40	1109,00	63,36
mix grigio 10-10	100	88	0,88	72	15,40	1109,00	63,36
mix scuro 10-10	100	88	0,88	72	15,40	1109,00	63,36



V1
variazione uniforme
uniform variation

MUTINA.IT

Follow us on

