

Vibes

COLOR BODY PORCELAIN TILE

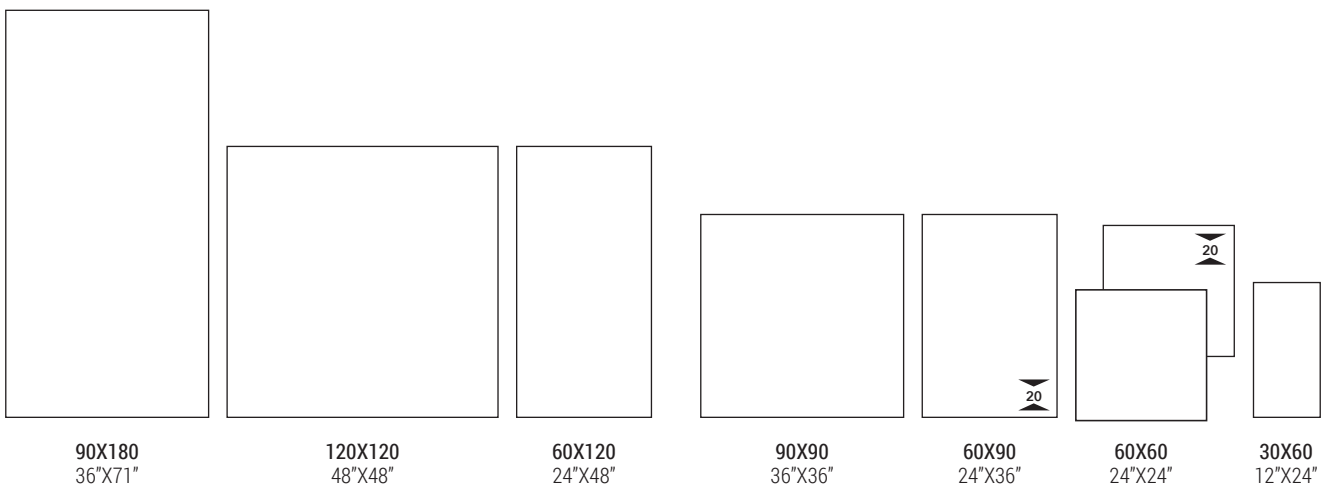
GRES PORCELLANATO COLORATO IN MASSA / GRÈS CÉRAME TEINTÉ DANS LA MASSE / EINGEFÄRBTES FEINSTEINZEUG
GRES PORCELÁNICO COLOREADO EN MASA / КЕРАМОГРАНИТ ОКРАШЕННЫЙ В МАССЕ / 彩色通体瓷质砖

CONFORME / ACCORDING TO / CONFORME / KONFORM / CONFORME / COOTBETCTBYET / 合格
UNI EN 14411 - G BIa



FORMATI

SIZES / FORMATS / FORMATE / FORMATOS / ФОРМАТЫ / 规格

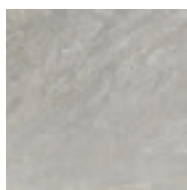




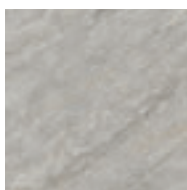
Stone

SUPERFICI

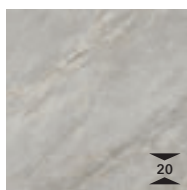
SURFACES / SURFACES / OBERFLÄCHEN / SUPERFICIES / ПОВЕРХНОСТИ / 表面



N ○



N ○ ✕



N ○ ✕

COLORI

COLOURS / COULEURS / FARBEN / COLORES / ЦВЕТА / 颜色



DG



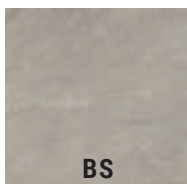
G



W



B



BS





Vibes





Vibes



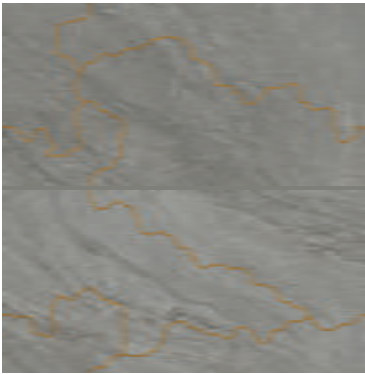
VIBES 9018B RM - VIBES 69B ASRM



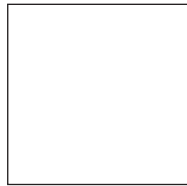
Vibes



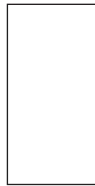
DG



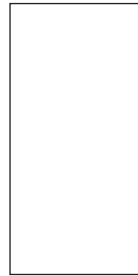
VIBES DK 120DG
120X120 - 48"x48"



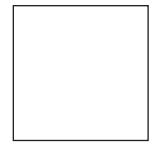
120X120 - 48"x48"



60X120 - 24"x48"



90X180 - 36"x71"



90X90 - 36"x36"



VIBES 120DG RM

VIBES 12DG RM

VIBES 9018DG RM

VIBES 90DG RM



60X60 - 24"x24"



30X60 - 12"x24"



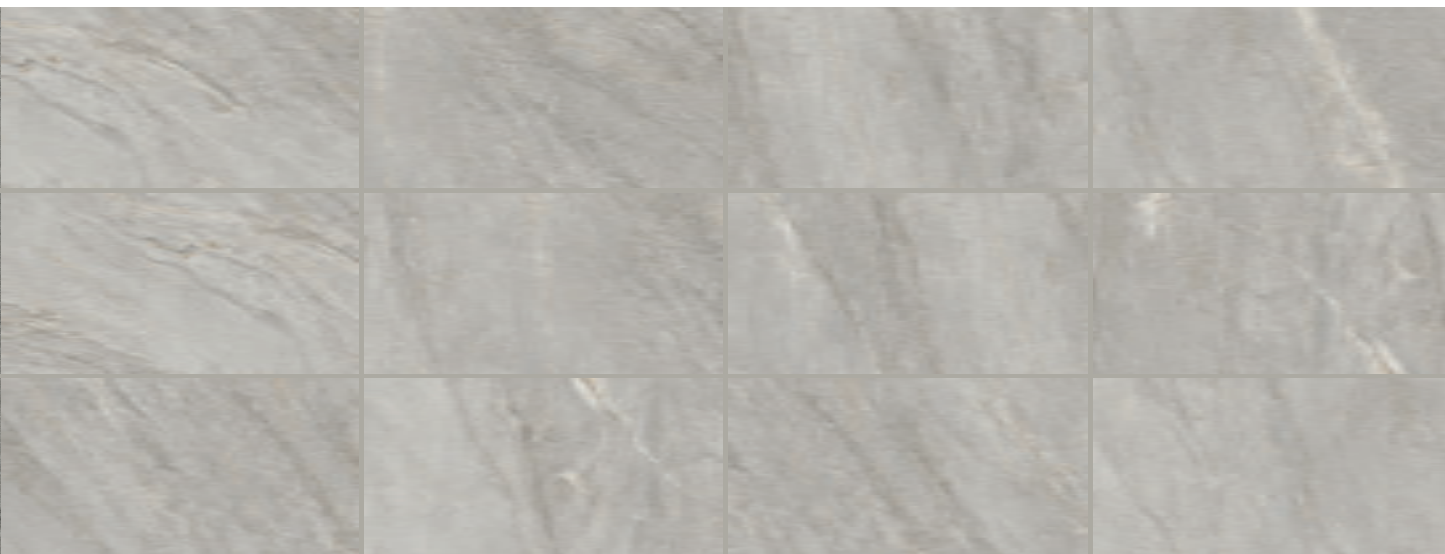
30X30 - 12"x12"



VIBES 60DG RM

VIBES 36DG RM

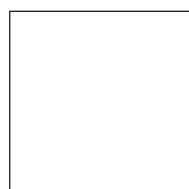
MK.VIBES 30DG



G



VIBES DK 120G
120X120 - 48"x48"



120X120 - 48"x48"



60X120 - 24"x48"



90X180 - 36"x71"



90X90 - 36"x36"



VIBES 120G RM

VIBES 12G RM

VIBES 9018G RM

VIBES 90G RM



60X60 - 24"x24"



30X60 - 12"x24"



30X30 - 12"x12"

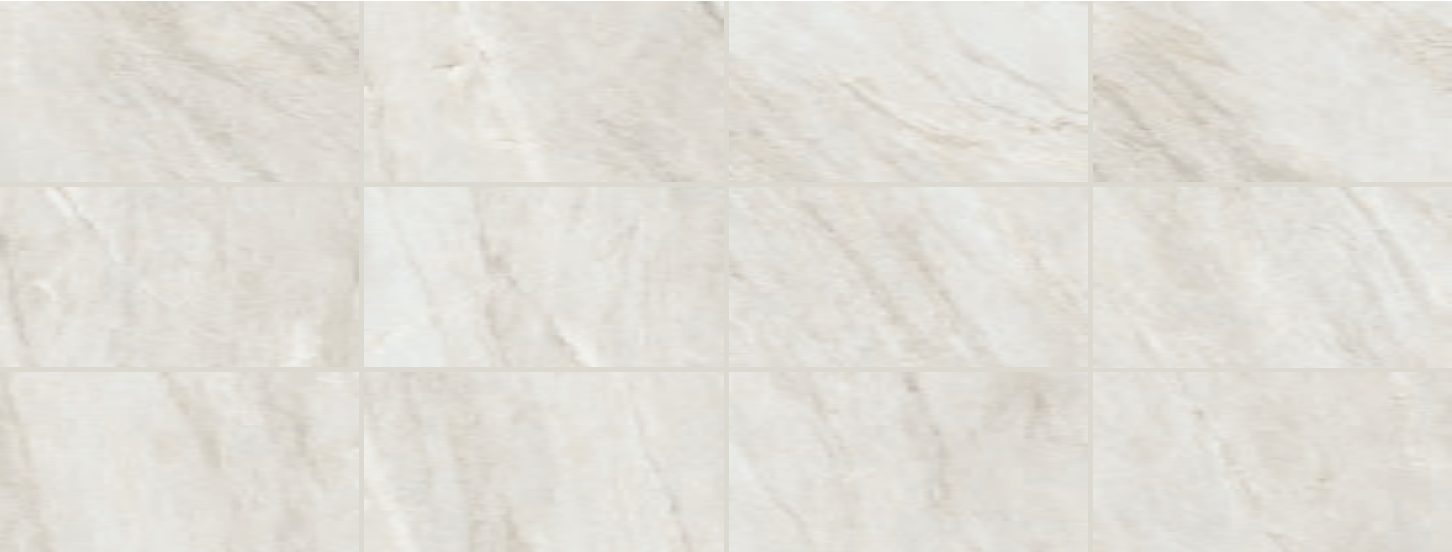


VIBES 60G RM

VIBES 36G RM

MK.VIBES 30G

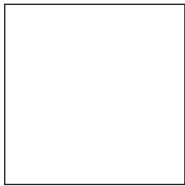
Vibes



W



VIBES DK 120W
120X120 - 48"x48"  



120X120 - 48"x48"



60X120 - 24"x48"



90X180 - 36"x71"



90X90 - 36"x36"



VIBES 120W RM

VIBES 12W RM

VIBES 9018W RM

VIBES 90W RM



60X60 - 24"x24"



30X60 - 12"x24"



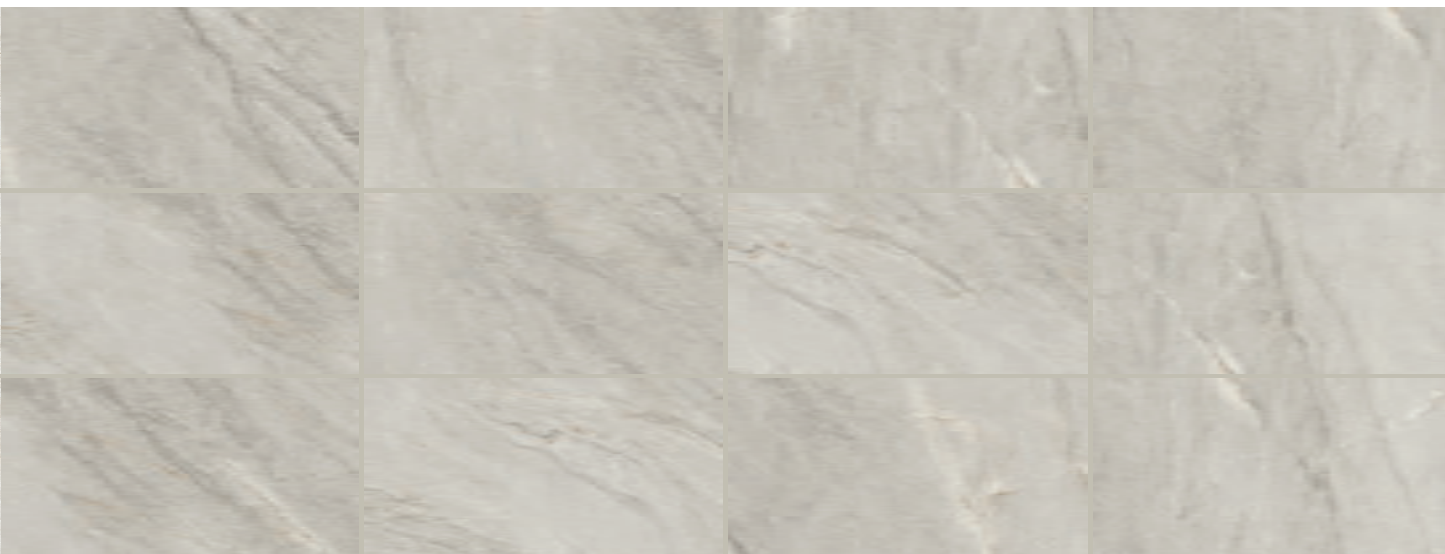
30X30 - 12"x12"



VIBES 60W RM

VIBES 36W RM

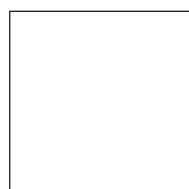
MK.VIBES 30W



B



VIBES DK 120B
120X120 - 48"x48"



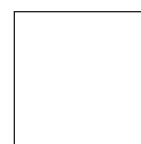
120X120 - 48"x48"



60X120 - 24"x48"



90X180 - 36"x71"



90X90 - 36"x36"



VIBES 120B RM

VIBES 12B RM

VIBES 9018B RM

VIBES 90B RM



60X60 - 24"x24"



30X60 - 12"x24"



30X30 - 12"x12"



VIBES 60B RM

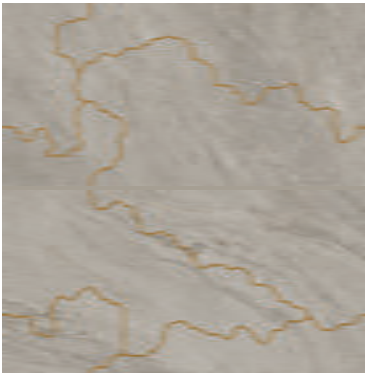
VIBES 36B RM

MK.VIBES 30B

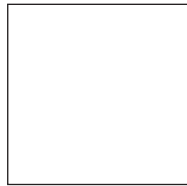
Vibes



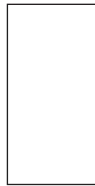
BS



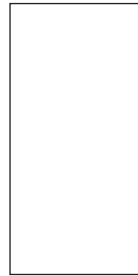
VIBES DK 120BS
120X120 - 48"X48"



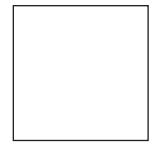
120X120 - 48"X48"



60X120 - 24"x48"



90X180 - 36"x71"



90X90 - 36"x36"



VIBES 120BS RM

VIBES 12BS RM

VIBES 9018BS RM

VIBES 90BS RM



60X60 - 24"x24"



30X60 - 12"x24"



30X30 - 12"X12"



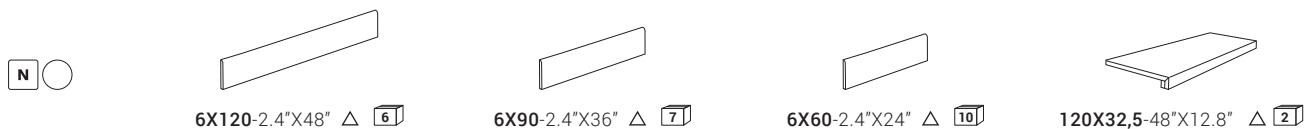
VIBES 60BS RM

VIBES 36BS RM

MK.VIBES 30BS

PEZZI SPECIALI

SPECIAL PIECES / PIÈCES SPÉCIALES / SONDERPREISE / PIEZAS ESPECIALES / СПЕЦИАЛЬНЫЕ ЭЛЕМЕНТЫ / 特制件



| | | | | |
|----|---------------|--------------|--------------|--------------|
| DG | VIBES BT120DG | VIBES BT90DG | VIBES BT60DG | VIBES G120DG |
| G | VIBES BT120G | VIBES BT90G | VIBES BT60G | VIBES G120G |
| W | VIBES BT120W | VIBES BT90W | VIBES BT60W | VIBES G120W |
| B | VIBES BT120B | VIBES BT90B | VIBES BT60B | VIBES G120B |
| BS | VIBES BT120BS | VIBES BT90BS | VIBES BT60BS | VIBES G120BS |

IMBALLI

PACKAGING / EMBALLAGES / VERPACKUNGEN / EMBALAJES / УПАКОВКИ / 包装

| FORMATO NOMINALE NOMINAL SIZE | BORDO EDGE | SPESSORE THICKNESS | SCATOLA / BOX | | | PALLET | | |
|----------------------------------|---------------|-----------------------|-------------------|------------------|------------------|----------------------------|------------------------|------------------------|
| | | | PZ/BOX PCS/BOX | MQ/BOX SM/BOX | KG/BOX KG/BOX | BOX/PALLET BOXES/PALLET | MQ/PALLET SM/PALLET | KG/PALLET KG/PALLET |
| 120X120-48"X48" | RECTIFIED | 10 | 1 | 1,44 | 34,00 | 36 | 51,84 | 1244,00 |
| 60X120-24"X48" | RECTIFIED | 10 | 2 | 1,44 | 33,39 | 30 | 43,20 | 1021,55 |
| 60X60-24"X24" | RECTIFIED | 10 | 3 | 1,08 | 25,00 | 40 | 43,20 | 1020,00 |
| 30X60-12"X24" | RECTIFIED | 10 | 6 | 1,08 | 24,45 | 40 | 43,20 | 998,00 |
| 90X180-36"X71" | RECTIFIED | 10 | 1 | 1,62 | 37,24 | 36 | 58,32 | 1360,64 |
| 90X90-36"X36" | RECTIFIED | 10 | 2 | 1,62 | 37,20 | 22 | 35,64 | 838,40 |
| 30X30-12"X12" MOSAIC | MOSAIC | 10 | 6 | 0,54 | 11,83 | 48 | 25,92 | 588,03 |

CARATTERISTICHE TECNICHE SPECIFICHE

TECHNICAL FEATURES SPECIFICATIONS / CARACTÉRISTIQUES TECHNIQUES SPÉCIFIQUE / TECHNISCHE EIGENSCHAFTEN
CARACTERÍSTICAS TÉCNICAS ESPECÍFICAS / ТРЕБУЕМЫЕ ТЕХНИЧЕСКИЕ ХАРАКТЕРИСТИКИ / 特殊技术规格





| | DIN 51130 (R) | DIN 51097 (A+B+C) | BCR REP. CEC 6/81 | | DM 14/6/89 N. 236 | | PENDULUM TEST BS (INGLESE) | PENDULUM TEST AS/NZS 4856:2004 (AUSTRALIANO) | PENDULUM TEST UNE ENV 12633:2003 (SPAGNOLO) | BOT 3000 (DCOF) |
|-------|------------------|----------------------|----------------------|------|----------------------|------|----------------------------------|---|--|--------------------|
| | | | G.A. | G.B. | C.A. | G.B. | | | | AVERAGE VALUE |
| VIBES | R10 | A | >0.4 | >0.4 | >0.4 | >0.4 | >36 | >35 | 1 | >0,42 |

Vibes





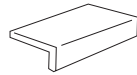
Stone

| | 10 mm | | 20 mm | |
|----|---|---|--|---|
| |  |  |  |  |
| | 60X120-24"x48" | 60X60-24"x24" | 60X90-24"x36" | 60X60-24"x24" |
| DG | VIBES R12DG RM | VIBES R60DG RM | VIBES 69DG ASRM | VIBES 60DG ASRM |
| G | VIBES R12G RM | VIBES R60G RM | VIBES 69G ASRM | VIBES 60G ASRM |
| W | VIBES R12W RM | VIBES R60W RM | VIBES 69W ASRM | VIBES 60W ASRM |
| B | VIBES R12B RM | VIBES R60B RM | VIBES 69B ASRM | VIBES 60B ASRM |
| BS | VIBES R12BS RM | VIBES R60BS RM | VIBES 69BS ASRM | VIBES 60BS ASRM |



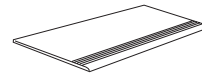
10 PEZZI SPECIALI

SPECIAL PIECES / PIÈCES SPÉCIALES / SONDERPREISE / PIEZAS ESPECIALES / СПЕЦИАЛЬНЫЕ ЭЛЕМЕНТЫ / 特制件



ELEMENTO A ELLE
L-SHAPED

20X60X4-8"X24" X2" △ 6



STEP
STEP

30X60-12"X24" △ 8

| | | |
|----|---------------|---------------|
| DG | VIBES E R60DG | VIBES S R60DG |
| G | VIBES E R60G | VIBES S R60G |
| W | VIBES E R60W | VIBES S R60W |
| B | VIBES E R60B | VIBES S R60B |
| BS | VIBES E R60BS | VIBES S R60BS |

CARATTERISTICHE TECNICHE SPECIFICHE

TECHNICAL FEATURES SPECIFICATIONS / CARACTÉRISTIQUES TECHNIQUES SPÉCIFIQUE / TECHNISCHE EIGENSCHAFTEN

CARACTERÍSTICAS TÉCNICAS ESPECÍFICAS / ТРЕБУЕМЫЕ ТЕХНИЧЕСКИЕ ХАРАКТЕРИСТИКИ / 特殊技术规格

| | DIN 51130 (R) | DIN 51097 (A+B+C) | BCR REP. CEC 6/81 | | DM 14/6/89 N. 236 | | PENDULUM TEST BS (INGLESE) | PENDULUM TEST AS/NZS 4856:2004 (AUSTRALIANO) | PENDULUM TEST UNE ENV 12633:2003 (SPAGNOLO) | BOT 3000 (DCOF) |
|----------|------------------|----------------------|----------------------|------|----------------------|------|----------------------------------|---|--|--------------------|
| | | | G.A. | G.B. | C.A. | G.B. | | | | AVERAGE VALUE |
| VIBES RB | R11 | B+C | >0.4 | >0.4 | >0.4 | >0.4 | >36 | >45 | 3 | >0,42 |
| VIBES AS | R11 | B+C | >0.4 | >0.4 | >0.4 | >0.4 | >36 | >45 | 3 | >0,42 |

20 PEZZI SPECIALI

SPECIAL PIECES / PIÈCES SPÉCIALES / SONDERPREISE / PIEZAS ESPECIALES / СПЕЦИАЛЬНЫЕ ЭЛЕМЕНТЫ / 特制件



 20
SQUARE BORDER* costa lucida
SQUARE BORDER* polished edge
 60X60-24"X24" △ 2

 20
GRADONE* costa lucida
TERRACE* polished edge
 33X60-13"X24" △ 2

 20
GRADONE* costa lucida
TERRACE* polished edge
 33X90-13"X36" △ 2

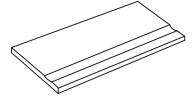
 20
ALZATA gocciolatoio
RISE dripstone
 20X60-8"X24" △ 4

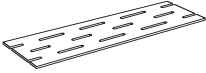
| | | | | |
|----|-----------------|-----------------|-----------------|----------------|
| DG | VIBES SB60DG AS | VIBES GR336DGAS | VIBES GR339DGAS | VIBES AZ60DGAS |
| G | VIBES SB60G AS | VIBES GR336G AS | VIBES GR339G AS | VIBES AZ60G AS |
| W | VIBES SB60W AS | VIBES GR336W AS | VIBES GR339W AS | VIBES AZ60W AS |
| B | VIBES SB60B AS | VIBES GR336B AS | VIBES GR339B AS | VIBES AZ60B AS |
| BS | VIBES SB60BS AS | VIBES GR336BSAS | VIBES GR339BSAS | VIBES AZ60BSAS |



 20
STEP righe costa lucida
STEP stripes polished edge
 30X60-12"X24" △ 2

 20
TOP gocciolatoio coste lucide
TOP dripstone polished edges
 30X60-12"X24" △ 2

 20
BORDO PISCINA* costa lucida
POOL EDGE* polished edge
 30X60-12"X24" △ 2

 20
GRIGLIA PISCINA*
POOL GRILLE*
 20X60-8"X24" △ 2

| | | | | |
|----|----------------|-----------------|----------------|----------------|
| DG | VIBES S 60DGAS | VIBES TOP60DGAS | VIBES BP60DGAS | VIBES GP60DGAS |
| G | VIBES S 60G AS | VIBES TOP60G AS | VIBES BP60G AS | VIBES GP60G AS |
| W | VIBES S 60W AS | VIBES TOP60W AS | VIBES BP60W AS | VIBES GP60W AS |
| B | VIBES S 60B AS | VIBES TOP60B AS | VIBES BP60B AS | VIBES GP60B AS |
| BS | VIBES S 60BSAS | VIBES TOP60BSAS | VIBES BP60BSAS | VIBES GP60BSAS |

IMBALLI

PACKAGING / EMBALLAGES / VERPACKUNGEN / EMBALAJES / УПАКОВКИ / 包装

| FORMATO NOMINALE NOMINAL SIZE | BORDO EDGE | SPESSORE THICKNESS | SCATOLA / BOX | | | PALLET | | |
|----------------------------------|---------------|-----------------------|-------------------|------------------|------------------|----------------------------|------------------------|------------------------|
| | | | PZ/BOX PCS/BOX | MQ/BOX SM/BOX | KG/BOX KG/BOX | BOX/PALLET BOXES/PALLET | MQ/PALLET SM/PALLET | KG/PALLET KG/PALLET |
| 60X120-24"X48" | RECTIFIED | 10 | 2 | 1,44 | 33,39 | 30 | 43,20 | 1021,55 |
| 60X60-24"X24" | RECTIFIED | 10 | 3 | 1,08 | 25,00 | 40 | 43,20 | 1020,00 |
| 60X90-24"X36" | RECTIFIED | 20 | 1 | 0,54 | 24,90 | 50 | 27,00 | 1265,00 |
| 60X60-24"X24" | RECTIFIED | 20 | 2 | 0,72 | 33,15 | 32 | 23,04 | 1080,80 |

* Angolari DX e SX disponibili a richiesta. / RH and LH angle bracket available on request. / Angulaires D et G disponibles sur demande. / Eckstücke links und rechts auf Anfrage erhältlich. / Cantonerias DCHA. e IZDA. disponibles bajo pedido. / Правый и Левый Угловые элементы доступны по запросу. / 可根据需求提供左转角和右转角。

I pezzi speciali ed i fondi possono presentare leggere differenze di tonalità fra di loro. / Special pieces and backgrounds can have slightly different shades from one another. / Les pièces spéciales et les fonds peuvent présenter de légères différences de tonalités entre elles. / Formteile und Grundierungen können untereinander leichte Farbabweichungen aufweisen. / Las piezas especiales y los fondos pueden presentar ligeras diferencias de tono. / Специальные и фоновые элементы могут немного отличаться по оттенку. / 一些特殊配件和底部可能会有轻微色差。

Il bordo può mostrare una piccola diversità cromatica fra la superficie ed il corpo del pezzo ceramico. / There can be a slight colour difference on the edge between the surface and the main ceramic piece. / Le bord peut présenter une légère différence entre la surface et le corps de la pièce en céramique. / Die Kante kann zwischen Oberfläche und Korpus des Keramikeils einen unterschiedlichen Farbton aufweisen. / El borde puede presentar ligeras diferencias cromáticas entre la superficie y el cuerpo de la pieza cerámica. / В кромках может появиться небольшая хроматическая разница между поверхностью и корпусом керамической детали. / 边缘的颜色可能与陶瓷产品主体和表面颜色稍有差别。