

# VICTORIOUS



59,2X59,2

# Victorious

59,2X59,2



Victorious Grey  
59,2X59,2

8170

\*7 Different designs / 7 Diseños distintos

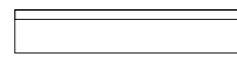


Victorious Cream  
59,2X59,2

8170

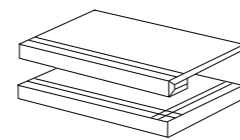
\*7 Different designs / 7 Diseños distintos

## Skirtings

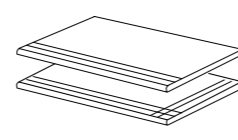


Victorious Rodapié  
7,3x59,2 8735

## Steps



Victorious Grad. 8870  
Victorious Grad. Ang. 8895  
59,2X59,2



Victorious Peld. 8760  
Victorious Peld. Ang. 8785  
59,2X59,2



Clase 2

Nonslip Finish

PEI CLASE 4

Victorious Grey  
Victorious Cream

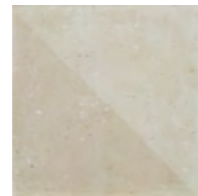
SIZE		PZ / CAJA	KG / CAJA	CAJA / PALET	KGS / PALET	M2 / PALET
59,2X59,2	VICTORIOUS	4	30,34	36	1108	50,47
7,3X59,2	VICTORIOUS RODAPIÉ	18	17,00			

# Victorious

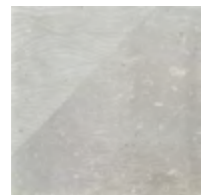
20X20



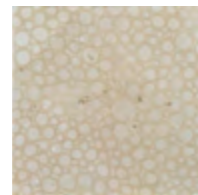
Victorious Grey  
20x20 8016  
\*28 Different designs /  
28 Diseños distintos



Victorious Cream  
20x20 8016  
\*28 Different designs /  
28 Diseños distintos



Victorious Grey  
Ornato 20x20 8016  
\*48 Different designs /  
48 Diseños distintos



Victorious Cream  
Ornato 20x20 8016  
\*48 Different designs /  
48 Diseños distintos



Moldura Victorious  
3 Grey 3x20 8718



Moldura Victorious  
3 Cream 3x20 8718



SIZE		PZ / CAJA	KG / CAJA	CAJA / PALET	KGS / PALET	M2 / PALET
20X59,2	VICTORIOUS	25	12,91	100	1270	100,00
3X20	MOLDURA VICTORIOUS 3	40	3,70			